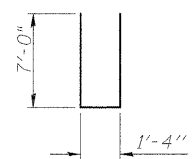
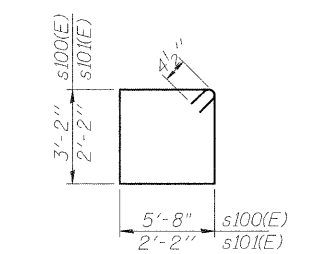


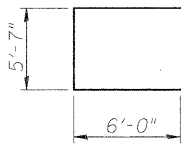
BAR h102(E)



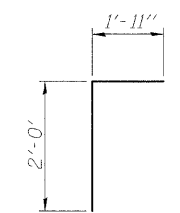
BAR n100(E)



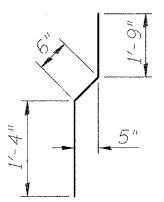
BARS s100(E) & s101(E)



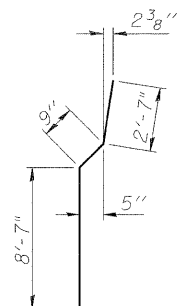
BAR u100(E)



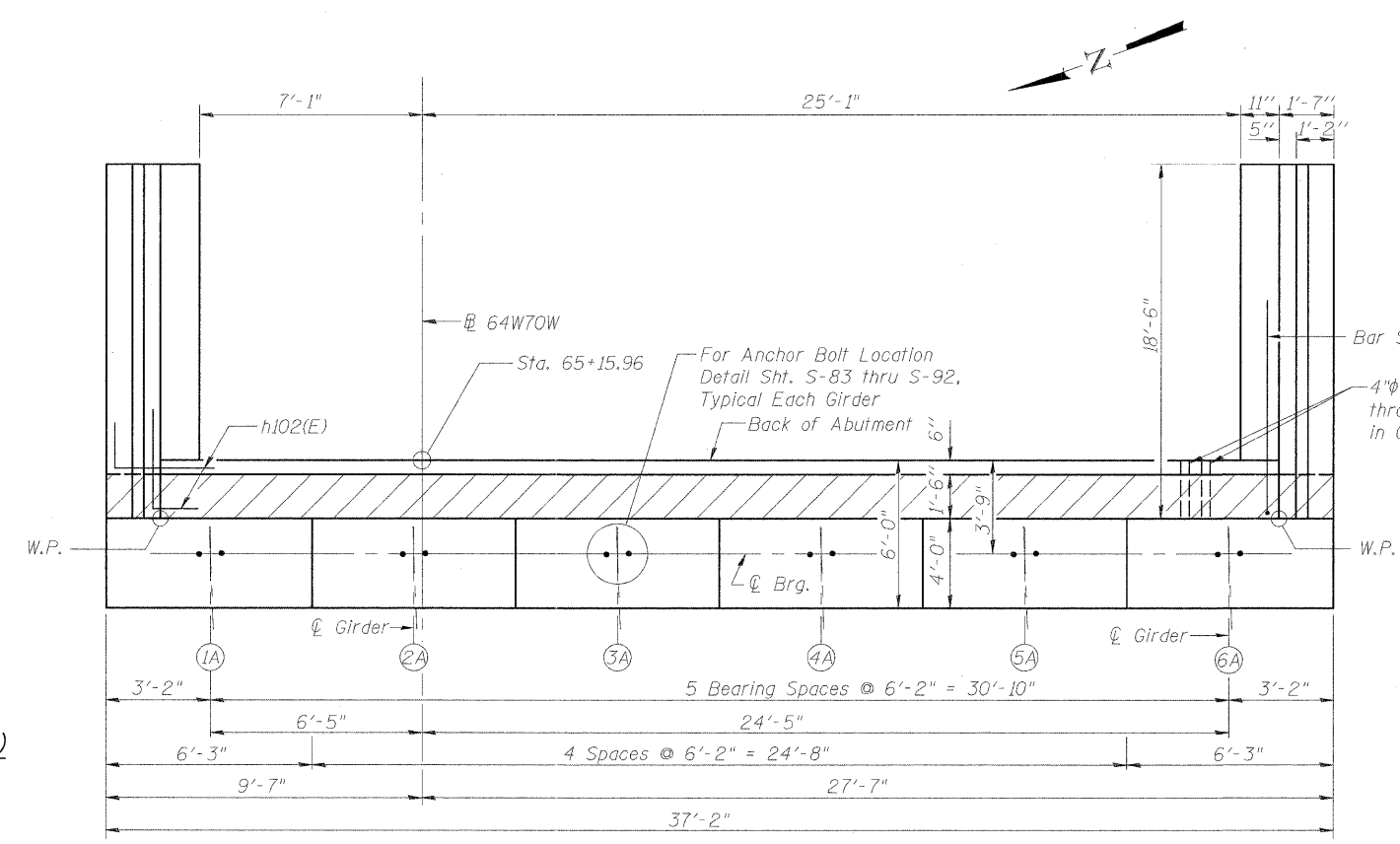
BAR v100(E)



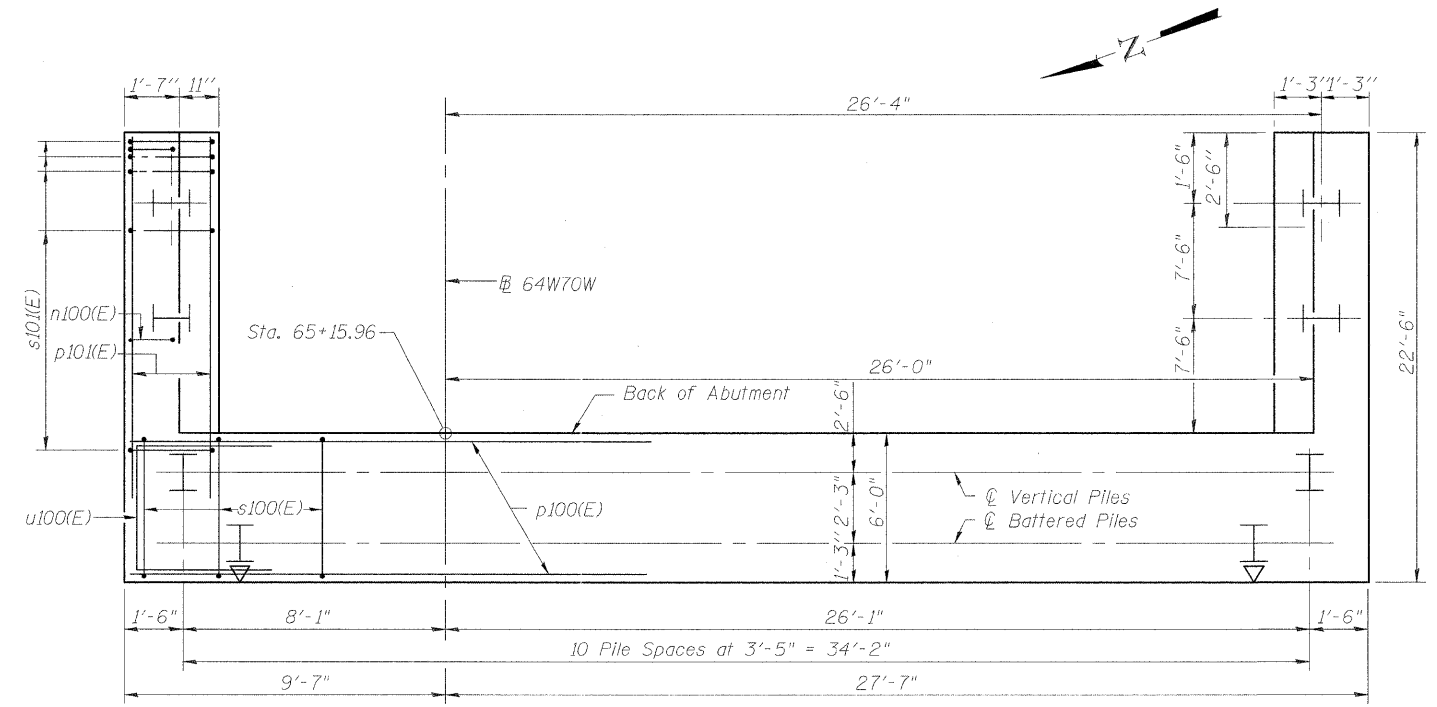
BAR v101(E)



BAR v104(E)



TOP VIEW



PLAN-PILE CAP

PILE DATA

Type: HP 14x89
 Nominal Required Bearing: 500 kips
 Factored Resistance Available: 250 kips
 Est. Length: 97'
 No. Production Piles: 14
 No. Test Piles: 1

Note:
 Piles shall be driven through 2'-0" diameter precored holes extending to elevation 395.0 according to Article 512.09C of the Standard Specifications. Cost included in Driving Piles.

BILL OF MATERIAL

Bar	No.	Size	Length	Shape
h100(E)	14	#5	33'-8"	—
h101(E)	5	#6	33'-8"	—
h102(E)	36	#5	7'-6"	—
h103(E)	52	#4	18'-2"	—
h105(E)	16	#5	1'-6"	—
n100(E)	40	#6	15'-4"	—
p100(E)	11	#10	36'-10"	—
p101(E)	12	#7	21'-9"	—
s100(E)	44	#4	18'-5"	—
s101(E)	36	#4	9'-5"	—
u100(E)	8	#6	17'-7"	—
v100(E)	35	#5	3'-11"	—
v101(E)	35	#4	3'-7"	—
v102(E)	40	#6	11'-6"	—
v104(E)	40	#6	11'-11"	—
v105(E)	35	#5	10'-5"	—
v106(E)	35	#5	8'-11"	—

Item	Unit	Quantity
Structure Excavation	Cu. Yd.	293.4
Concrete Structures	Cu. Yd.	79.4
Reinforcement Bars, Epoxy Coated	Pound	8,200
Furnishing Steel Piles, HP14x89	Foot	1358
Driving Piles	Foot	1358
Test Pile Steel HP14x89	Each	1
Pile Shoes	Each	15
Concrete Sealer	Sq. Ft.	584
Porous Granular Embankment (Special)	Cu. Yd.	98.0
Geocomposite Wall Drain	Sq. Yd.	39
Pipe Underdrains for Structures 4"	Foot	42
Concrete Encasement	Cu. Yd.	6.0

Concrete Sealer shall be applied to abutment backwalls, bearing seats and expose faces of abutment cap.
 For details and quantity of Bar Splicers, see sheet S-123 of S-138.
 For details of piles and Concrete Encasement, see sheet S-122 of S-138.

P:\6204600\1\800-LD01\901-Drawings\766200_Master-Consolidated\Structural\082-0323_Sheet\50916_082-0323_0325_76675-EastAbut1.dgn



USER NAME = BhattA	DESIGNED - DDB	REVISED -
PLOT SCALE = 0.003333' / 1"	DRAWN - BRD	REVISED -
PLOT DATE = #DATE#	CHECKED - ATB	REVISED -
	DATE - 05-02-11	REVISED -

STATE OF ILLINOIS
 DEPARTMENT OF TRANSPORTATION

EAST ABUTMENT PLANS - S.N. 082-0325
 I-70W OVER I-55, CSX & KCS RAILROADS

SCALE: NONE SHEET NO. S-96 OF S-138 SHEETS STA. TO STA.

F.A.I. RTE.	SECTION	COUNTY	TOTAL SHEETS	SHEET NO.
70	82-1-B-1	ST. CLAIR	319	211
S.N. 082-0323 & S.N. 082-0325			CONTRACT NO. 76C75	
FED. ROAD DIST. NO.		ILLINOIS FED. AID PROJECT		