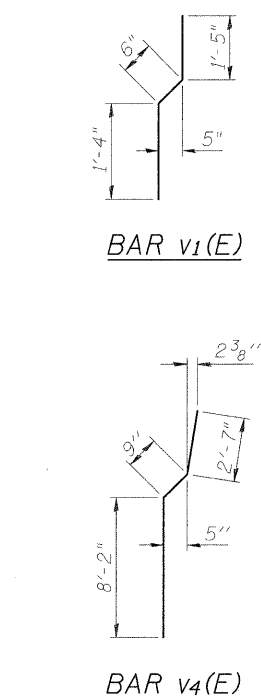
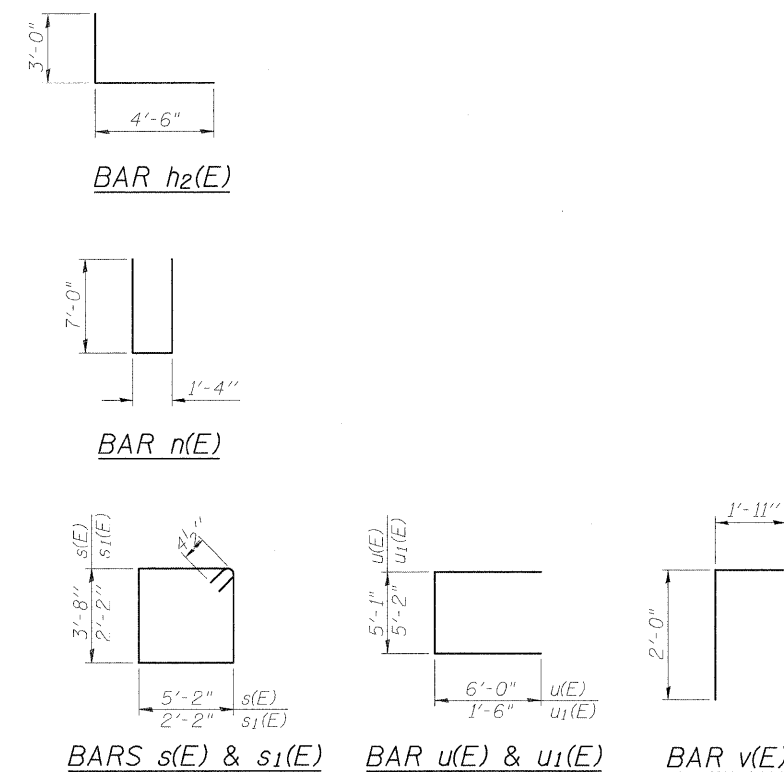


**BILL OF MATERIAL**

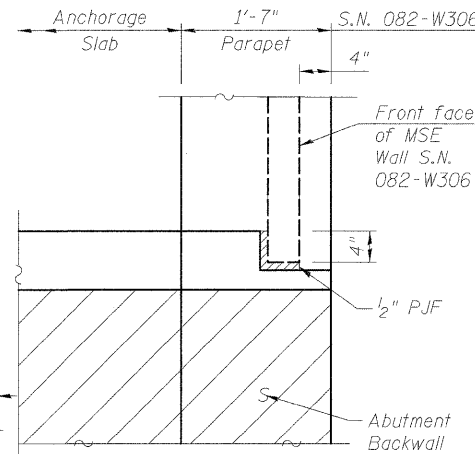
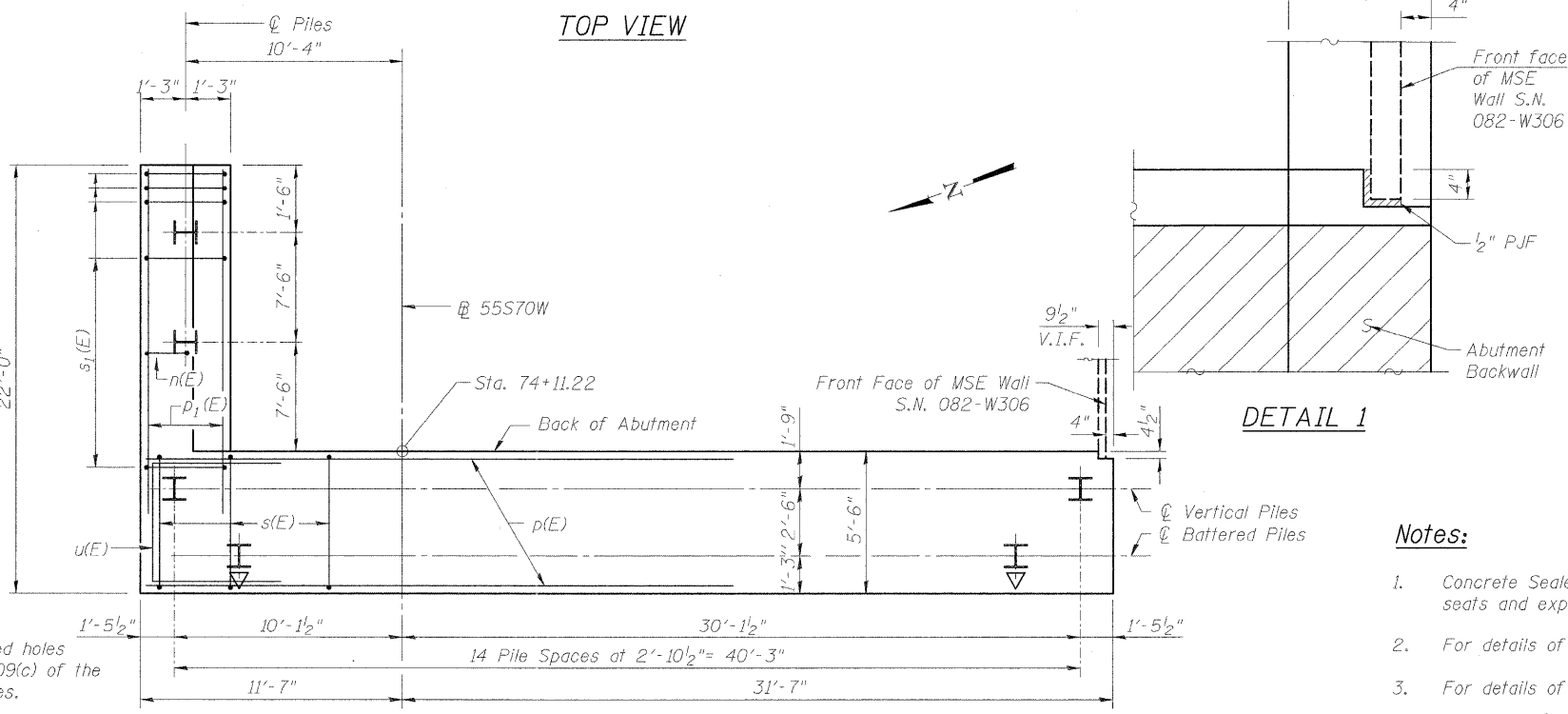
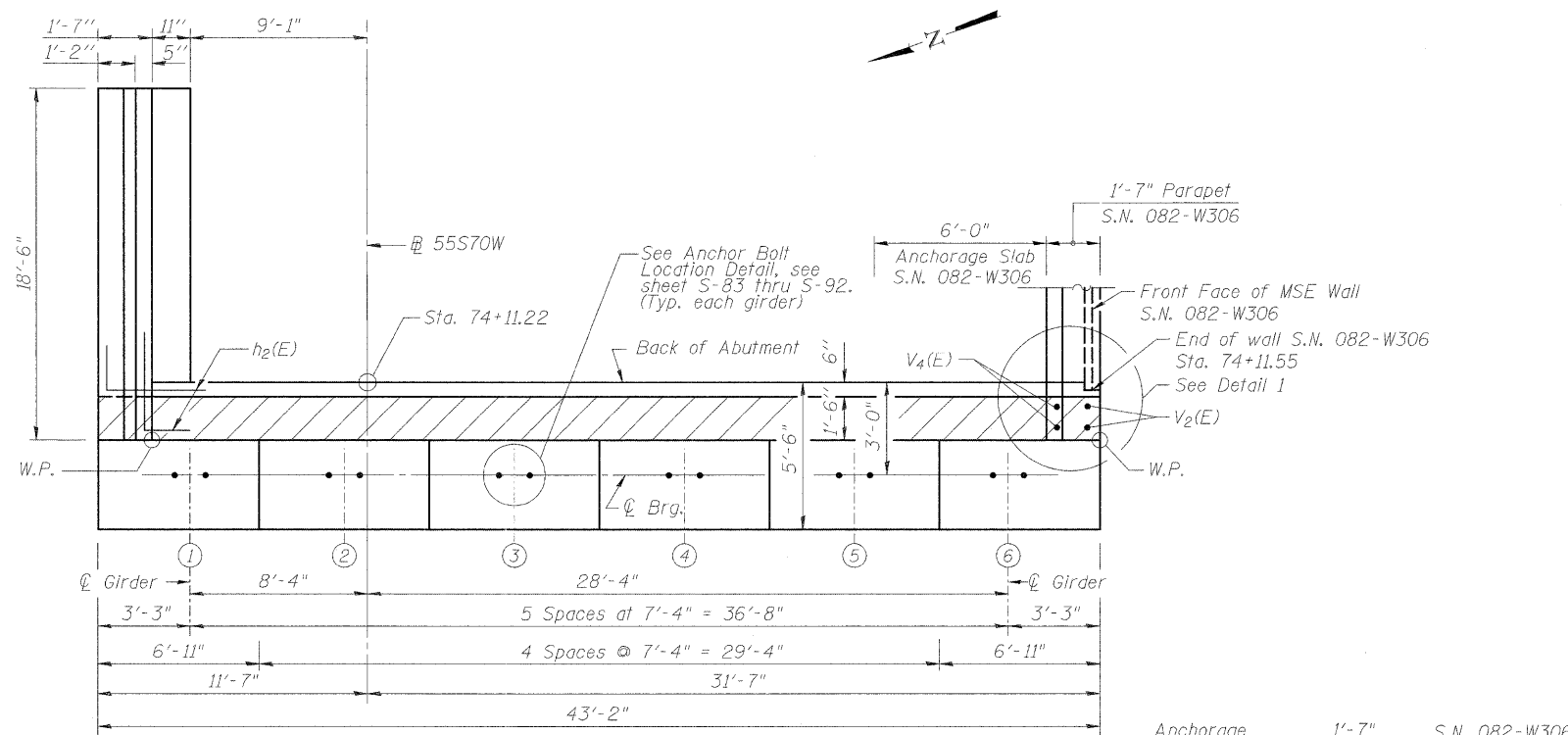
Bar	No.	Size	Length	Shape
h(E)	14	#5	41'-7"	—
h1(E)	5	#6	41'-7"	—
h2(E)	16	#5	7'-6"	—
h3(E)	24	#4	18'-2"	—
n(E)	20	#6	15'-4"	—
p(E)	11	#9	42'-10"	—
p1(E)	6	#7	21'-9"	—
p2(E)	4	#6	28'-7"	—
p3(E)	4	#6	13'-11"	—
s(E)	60	#4	18'-5"	—
s1(E)	18	#4	9'-5"	—
u(E)	10	#6	17'-1"	—
u1(E)	44	#4	8'-2"	—
v(E)	42	#5	3'-11"	—
v1(E)	42	#5	3'-3"	—
v2(E)	22	#6	11'-2"	—
v4(E)	22	#6	11'-6"	—
v5(E)	42	#5	10'-7"	—
v6(E)	42	#5	9'-3"	—

Item	Unit	Quantity
Structure Excavation	Cu. Yd.	243.5
Concrete Structures	Cu. Yd.	77.3
Concrete Encasement	Cu. Yd.	8.2
Reinforcement Bars, Epoxy Coated	Pound	7,210
Bar Splicers	Each	44
Furnishing Steel Piles, HP14x89	Foot	2516
Driving Piles	Foot	2516
Pile Shoes	Each	17
Concrete Sealer	Sq Ft	630
Porous Granular Embankment (Special)	Cu. Yd.	137.6
Geocomposite Wall Drain	Sq. Yd.	51
Pipe Underdrains for Structures 4"	Foot	48
Conduit Embedded in Structure, 2" Dia., PVC	Foot	13



**PILE DATA**  
 Type: HP 14x89  
 Nominal Required Bearing: 500 kips  
 Factored Resistance Available: 250 kips  
 Est. Length: 148 ft  
 No. Production Piles: 17

Note:  
 Piles shall be driven through 2'-0" diameter precored holes extending to Elev. 383.00 according to Article 512.09(c) of the Standard Specifications. Cost included in Driving Piles.



- Notes:**
- Concrete Sealer shall be applied to abutment backwalls, bearing seats and expose faces of abutment cap.
  - For details of piles and concrete encasement, see sheet S-122.
  - For details of bar splicers, see sheet S-123.
  - For retaining wall S.N. 082-W306 see Sheet 254 thru. 271.

P:\02046689\900-CA01-900L Drawings\760000 Master-Consolidated\Structural\082-0323\Sheets\082-0323\_76075-EastAbutPlan.dgn



USER NAME = Bhatta	DESIGNED - DEV	REVISED -
PLOT SCALE = @1' / 1/8"	DRAWN - GF	REVISED -
PLOT DATE = #DATE#	CHECKED - ATB	REVISED -
	DATE - 05-02-11	REVISED -

**STATE OF ILLINOIS  
 DEPARTMENT OF TRANSPORTATION**

**EAST ABUTMENT PLANS - S.N. 082-0323  
 I-70W OVER I-55, CSX & KCS RAILROADS**

SCALE: NONE SHEET NO. S-93 OF S-138 SHEETS STA. TO STA.

F.A.I. RTE.	SECTION	COUNTY	TOTAL SHEETS	SHEET NO.
70	82-1-B-1	ST. CLAIR	319	208
S.N. 082-0323 & S.N. 082-0325		CONTRACT NO. 76C75		
FED. ROAD DIST. NO.		ILLINOIS FED. AID PROJECT		