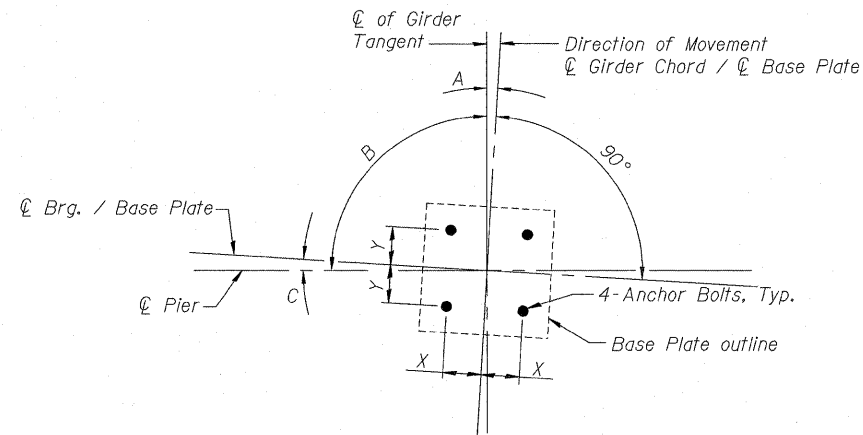


**GUIDED EXPANSION BEARING DIMENSIONS TABLE**

Brg. Location	Vertical Design Load (kips)	Lateral Design Load (kips)	Total Required Movement (inches)	Bottom Bearing Plate			Top Bearing Plate							Anchor Bolt $\phi$ in.	Anchor Bolt Specification Grade			
				Tb in.	Lb in.	Wb in.	Top Plate		Lt in.	Wt in.	N in.	S in.	Th1 in.			Th2 in.	L in.	D in.
							Tt1 in.	Tt2 in.										
S.N. 082-0323 Pier 2	550	81	2 1/2	1 7/8	36	25	2 3/8	3 1/8	26	22	8	5	11 5/8	12 3/8	18	19 3/4	1	F1554, Gr. 55
S.N. 082-0325																		
Unit 1, Pier 1	400	93	2 1/2	1 3/4	37	29	2	3 1/8	27	23	6	5	10 5/8	11 3/4	19	17 1/8	1 1/4	A307, Gr. C
Unit 1, Pier 3	250	47	2 1/2	1 1/2	30	21	1 1/2	2 1/4	20	15	8	3	8 1/2	9 1/4	12	12 7/8	1	A307, Gr. C
Unit 2, Pier 3	200	47	4 3/4	1 1/2	29	20	1 1/2	2 3/8	19	17	6	4	8	8 7/8	11	11 3/4	1	A307, Gr. C
Unit 2, Pier 4	550	112	2 3/4	1 5/8	35	28	2 1/2	3 1/2	25	20	8	5	11 1/2	12 1/2	17	19 3/4	1 1/4	F1554, Gr. 55
Unit 2, Pier 6	500	113	2 1/2	1 5/8	34	27	2 3/8	2 5/8	24	19	6	5	11	11 1/4	16	19 3/8	1 1/4	F1554, Gr. 55
Unit 3, Pier 10	650	85	4	1 5/8	39	31	3 1/4	2 5/8	29	25	10	6	13 1/8	12 1/2	21	22 5/8	1	F1554, Gr. 55

**BILL OF MATERIAL**

Item	Unit	Total
High Load Multi-Rotation Bearings, Guided Expansion 200K.	Each	6
High Load Multi-Rotation Bearings, Guided Expansion 250K.	Each	6
High Load Multi-Rotation Bearings, Guided Expansion 400K.	Each	6
High Load Multi-Rotation Bearings, Guided Expansion 500K.	Each	6
High Load Multi-Rotation Bearings, Guided Expansion 550K.	Each	12
High Load Multi-Rotation Bearings, Guided Expansion 650K.	Each	9
Anchor Bolts, 1 1/4"	Each	72
Anchor Bolts, 1"	Each	108



**ANCHOR BOLT LOCATION DETAIL.**

Structure	Location	X	Y	A	B	C
S.N. 082-0323	Pier 2	1'-4"	0'-10 1/2"	2°0'32"	90°0'0"	2°0'32"
	Pier 1	1'-4 1/2"	1'-0 1/2"	3°52'57"	90°0'0"	3°52'57"
	Pier 3 Unit 1	1'-1"	0'-8 1/2"	3°41'46"	90°0'0"	3°41'46"
S.N. 082-0325	Pier 3 Unit 2	1'-0 1/2"	0'-8"	6°40'45"	90°0'0"	6°40'45"
	Pier 4	1'-3 1/2"	1'-0"	2°9'27"	90°0'0"	2°9'27"
	Pier 6	1'-3"	0'-11 1/2"	0°	90°0'0"	0°
	Pier 10	1'-5 1/2"	1'-1 1/2"	3°13'34" (1B-7B) 3°38'35" (8B, 11B)	90°0'0" (1B-7B) 89°35'0" (8B, 11B)	3°13'34" (1B-7B) 3°13'34" (8B, 11B)

**Notes:**

Work this sheet with sheet S-89.

See Sheets S-83 thru S-86 for bearing layout & orientation.

P:\65806689\980\_CAD\981\_Draining\76C080\_Master\_Console\Drawn\Structural\082-0323\Sheet\S090\082-0323\_0325\_76C75\_P01\_E2.dgn



USER NAME = BhattA	DESIGNED - LLV	REVISED -
PLOT SCALE = 8:2 1/4" / in.	DRAWN - BRD	REVISED -
PLOT DATE = #DATE#	CHECKED - PJL	REVISED -
	DATE - 03/18/2011	REVISED -

**STATE OF ILLINOIS  
DEPARTMENT OF TRANSPORTATION**

**EXPANSION POT BEARING DETAILS II  
I-70W OVER I-55, CSX & KCS RAILROADS**

SCALE: NONE SHEET NO. 5-90 OF 5-138 SHEETS STA. TO STA.

F.A.I. RTE.	SECTION	COUNTY	TOTAL SHEETS	SHEET NO.
70	82-1-B-1	ST. CLAIR	319	205
S.N. 082-0323 & S.N. 082-0325			CONTRACT NO. 76C75	
FED. ROAD DIST. NO.		ILLINOIS FED. AID PROJECT		