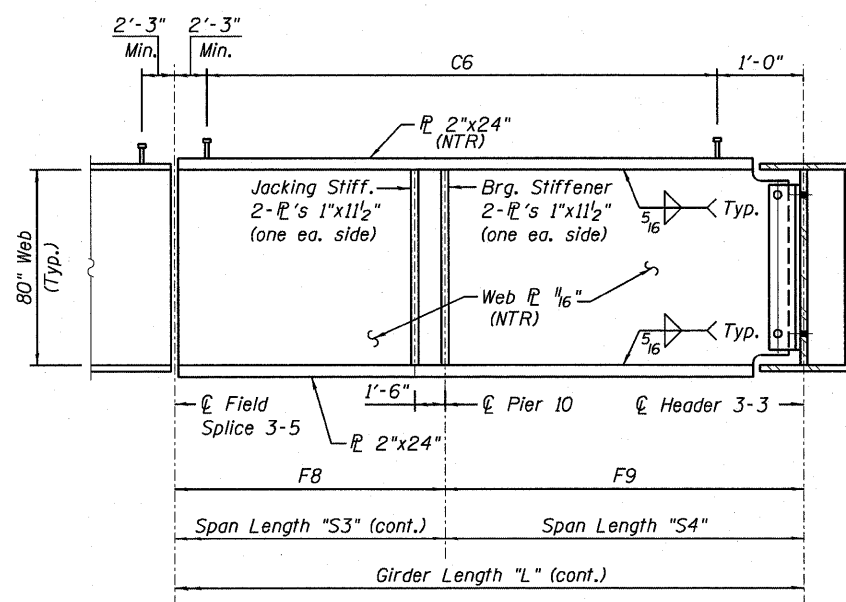
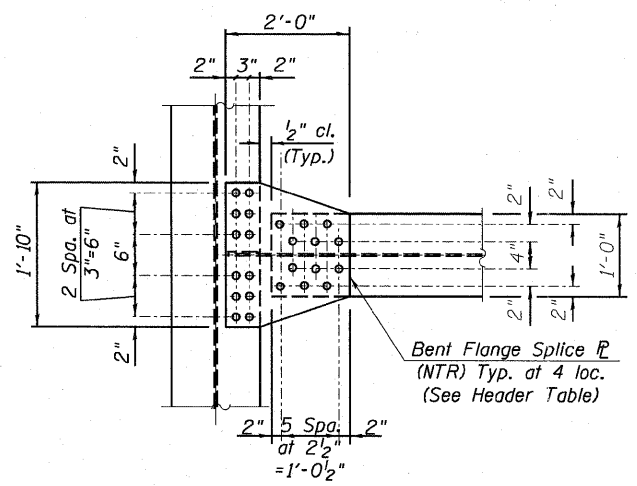


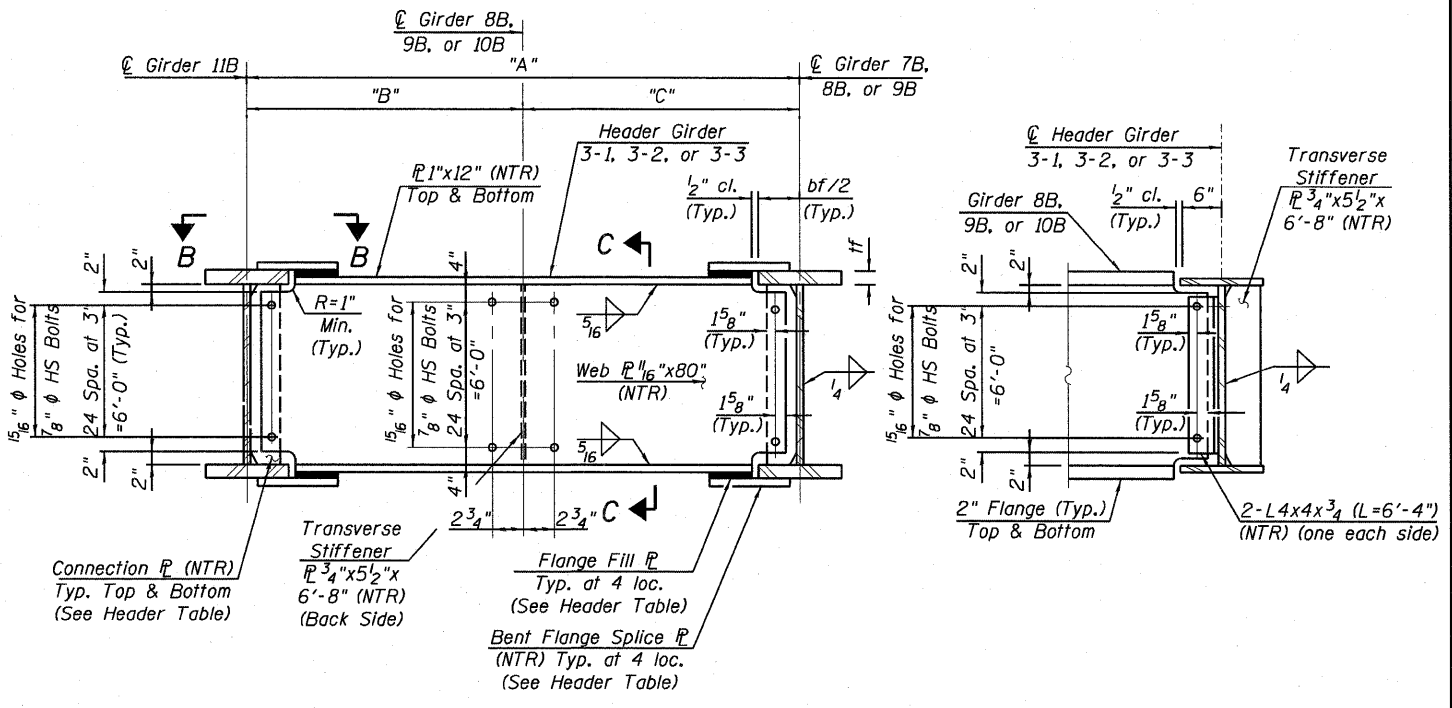
**GIRDER ELEVATION II - S.N. 082-0325 - UNIT 3 (GIRDER 8B)**  
 Connection & Splice P's not shown for clarity.



**GIRDER ELEVATION II - S.N. 082-0325 - UNIT 3 (GIRDER 8B)**  
 Connection & Splice P's not shown for clarity.



**SECTION B-B**



**HEADER GIRDER ELEVATION**  
 Looking upstation (Center Girders 8B, 9B & 10B not shown for clarity).

**SECTION C-C**  
 Looking South

**HEADER GIRDER TABLE**

Header Girder	Longitudinal Girders			Girder Spacing			Left & Right Flange		Connection Plate	Bent Flange Splice Plate*	Flange Fill Plate
	Left	Center	Right	"A"	"B"	"C"	tf	bf			
3-1	11B	10B	9B	4'-10 15/16"	2'-5 3/4"	2'-5 3/16"	1"	1'-4"	3/4" x 7 1/2" x 6'-8"	1" x 1'-10" x 2'-0"	None
3-2	11B	9B	8B	6'-1 1/2"	3'-0 11/16"	3'-0 13/16"	1"	1'-8"	3/4" x 9 1/2" x 6'-8"	1" x 1'-10" x 2'-0"	None
3-3	11B	8B	7B	6'-7 5/16"	3'-3 1/4"	3'-4 1/16"	2"	2'-0"	3/4" x 11 1/2" x 6'-8"	1" x 1'-10" x 2'-0"	1" x 1'-0" x 1'-4 1/2"

\*Flange Splice Plate to be bent at edge of flange to accommodate slope of Header Girder.

- Notes:
1. See Sheets S-67 thru S-68 for girder framing plans.
  2. See Sheets S-72 & S-74 for other girder elevations.
  3. See Sheets S-76 thru S-77 for camber & top of web elevations.
  4. See Sheet S-79 for moment tables & Sheet S-80 for reaction tables.
  5. See Sheet S-81 for girder bolted field splice details.
  6. See Sheet S-82 for girder cross frame details and erection notes.
  7. AASHTO M270 Grade 50 steel shall be used for all flanges, webs, stiffeners, splice plates, and cross frames, unless otherwise noted.
  8. Load carrying components designated "NTR" shall conform to the Supplemental Requirements for Notch Toughness (Zone 2).



USER NAME = BhattA	DESIGNED - CLS	REVISED -
PLDT SCALE = @2 1/4" = 1'-0"	DRAWN - DD	REVISED -
PLDT DATE = @DATE#	CHECKED - CHY	REVISED -
	DATE - 03/18/2011	REVISED -

STATE OF ILLINOIS  
 DEPARTMENT OF TRANSPORTATION

**GIRDER ELEVATION II - S.N. 082-0325 - UNIT 3**  
**I-70W OVER I-55, CSX & KCS RAILROADS**

F.A.I. RTE. 70	SECTION 82-1-B-1	COUNTY ST. CLAIR	TOTAL SHEETS 319	SHEET NO. 188
S.N. 082-0323 & S.N. 082-0325		CONTRACT NO. 76C75		
FED. ROAD DIST. NO. ILLINOIS FED. AID PROJECT				

SCALE: NONE SHEET NO. S-73 OF S-138 SHEETS STA. TO STA.