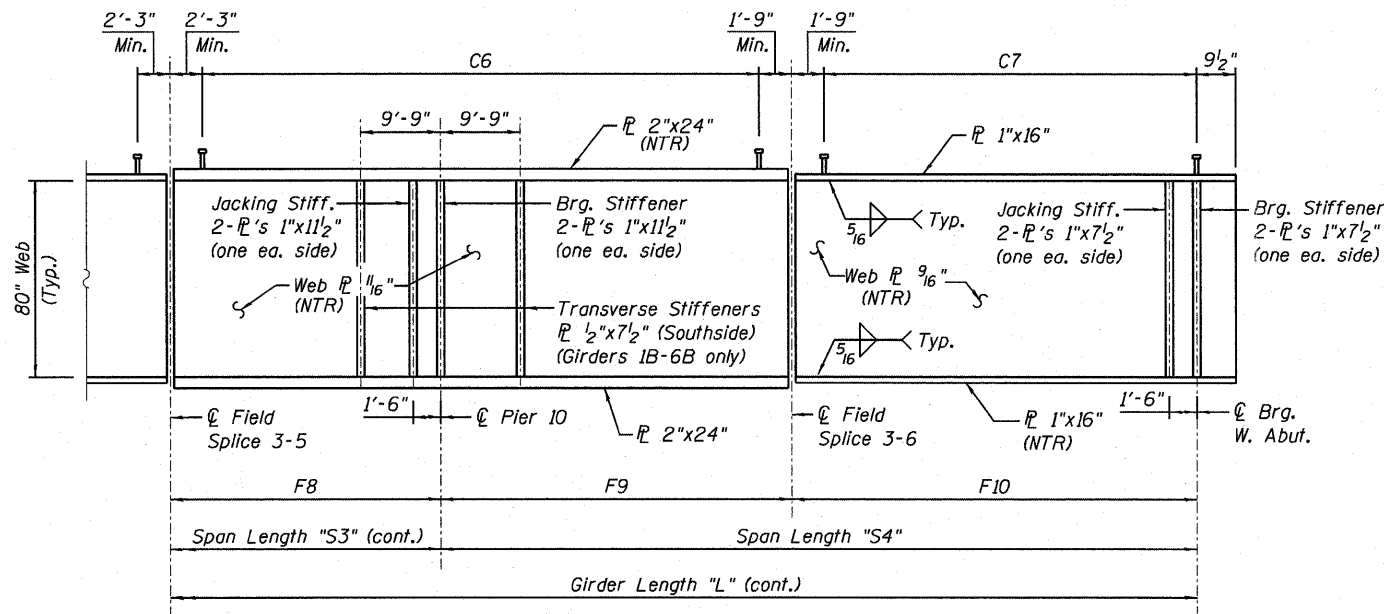


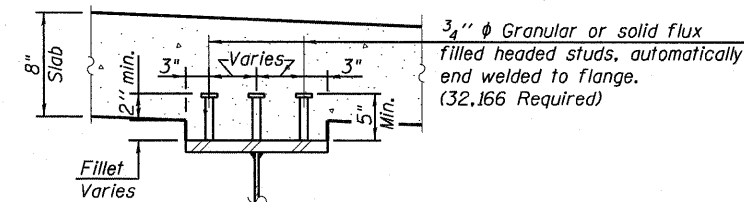
GIRDER ELEVATION I - S.N. 082-0325 - UNIT 3 (GIRDERS 1B THRU 7B & 11B)

Connection & Splice #s not shown for clarity.



GIRDER ELEVATION I - S.N. 082-0325 - UNIT 3 (GIRDERS 1B THRU 7B & 11B)

Connection & Splice #s not shown for clarity.



SECTION A-A

Do not place studs on splice plates.

Notes:

1. See Sheets S-67 thru S-68 for girder framing plans.
2. See Sheets S-73 thru S-74 for other girder elevations.
3. See Sheets S-76 thru S-77 for camber & top of web elevations.
4. See Sheet S-79 for moment tables & Sheet S-80 for reaction tables.
5. See Sheet S-81 for girder bolted field splice details.
6. See Sheet S-82 for girder cross frame details and erection notes.
7. AASHTO M270 Grade 50 steel shall be used for all flanges, webs, stiffeners, splice plates, and cross frames, unless otherwise noted.
8. Load carrying components designated "NTR" shall conform to the Supplemental Requirements for Notch Toughness (Zone 2).



USER NAME = bhettA
 PLOT SCALE = 0.2" = 1'-0"
 PLOT DATE = #DATE#

DESIGNED - CLS
 DRAWN - DD
 CHECKED - CHY
 DATE - 03/18/2011

REVISED -
 REVISED -
 REVISED -
 REVISED -

**STATE OF ILLINOIS
 DEPARTMENT OF TRANSPORTATION**

**GIRDER ELEVATION I - S.N. 082-0325 - UNIT 3
 I-70W OVER I-55, CSX & KCS RAILROADS**

SCALE: NONE SHEET NO. S-72 OF S-138 SHEETS STA. TO STA.

F.A.I. RTE.	SECTION	COUNTY	TOTAL SHEETS	SHEET NO.
70	82-1-B-1	ST. CLAIR	319	187
S.N. 082-0323 & S.N. 082-0325			CONTRACT NO. 76C75	
FED. ROAD DIST. NO. [ILLINOIS] FED. AID PROJECT				

P:\660846695\908-CAD\901-Drawings\76C75-Master-Connol\data\Structural\082-0325\Sheet\082-0325-GirderElevDet-Unit3-1.dgn