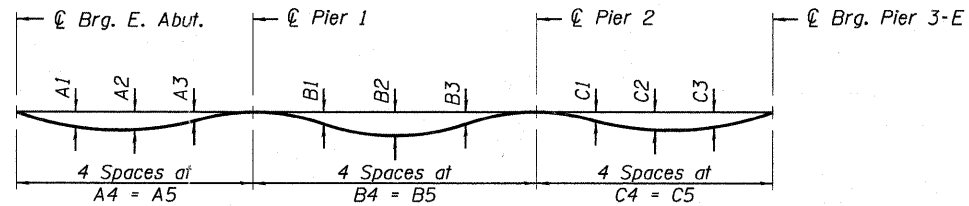


To determine "t": After all structural steel has been erected, elevations of the top flanges of the girders shall be taken at intervals shown below. These elevations subtracted from the "Theoretical Grade Elevations Adjusted for Dead Load Deflection" shown below, minus slab thickness, equals the fillet heights "t" above top flange of girders.

FILLET HEIGHTS



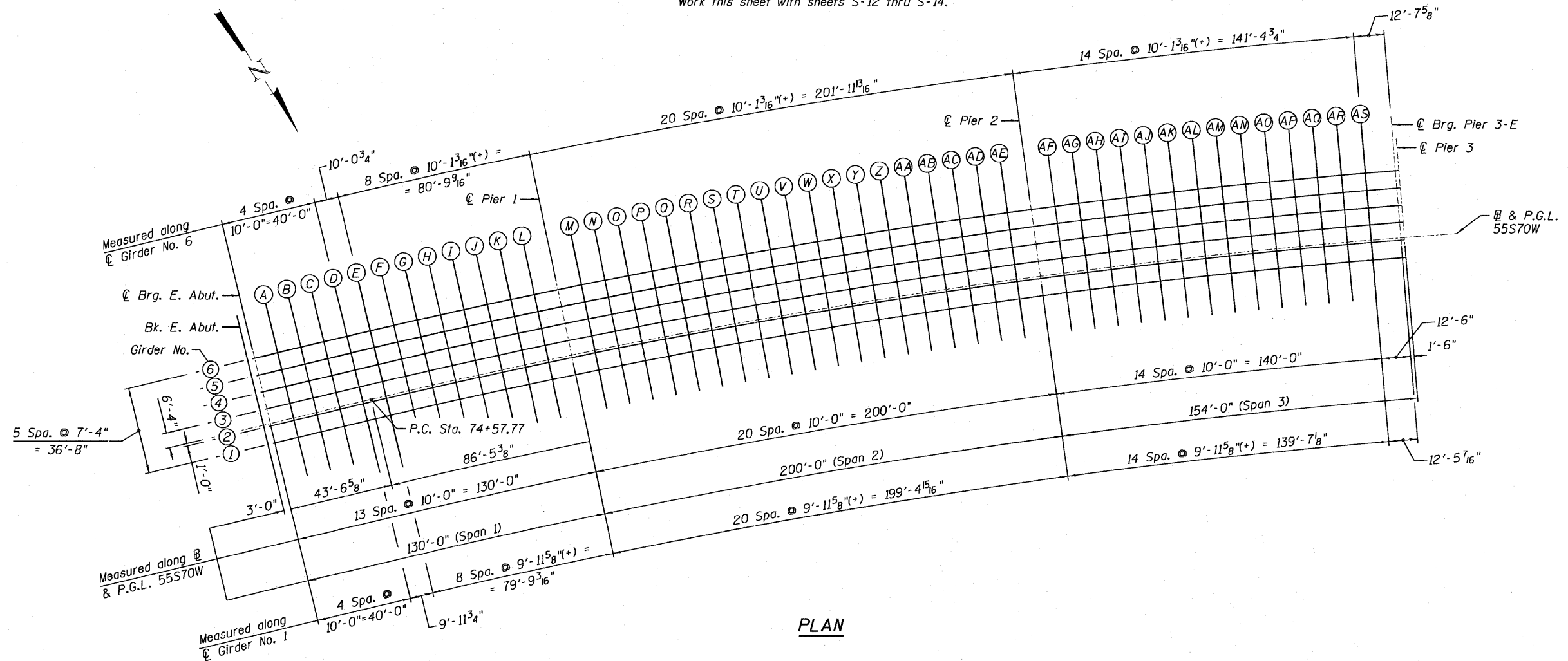
DEAD LOAD DEFLECTION DIAGRAM

(Includes weight of concrete only.)

Notes:

The above deflections are not to be used in the field if the engineer is working from the grade elevations adjusted for dead load deflections as shown below.

Work this sheet with sheets S-12 thru S-14.



PLAN

Girder No.	DEAD LOAD DEFLECTIONS														
	Span 1					Span 2					Span 3				
	A1	A2	A3	A4	A5	B1	B2	B3	B4	B5	C1	C2	C3	C4	C5
1	1/2"	1/2"	1/8"	32'-5 1/4"	129'-9"	1 3/8"	2 3/8"	1 1/4"	49'-10 1/4"	199'-5"	3/8"	1 1/8"	1 1/8"	38'-0 1/8"	152'-0 5/8"
2	1/2"	3/8"	1/8"	32'-5 7/8"	129'-11 5/8"	1 1/2"	2 3/8"	1 1/4"	49'-11 3/4"	199'-11 1/8"	3/8"	1 1/8"	1 1/8"	38'-1 3/8"	152'-5 3/8"
3	1/2"	3/8"	0"	32'-6 5/8"	130'-2 1/4"	1 1/2"	2 1/2"	1 1/4"	50'-1 3/8"	200'-5 3/8"	3/8"	1 1/8"	1 1/8"	38'-2 1/2"	152'-10 1/8"
4	1/2"	3/8"	0"	32'-7 1/4"	130'-5"	1 1/2"	2 1/2"	1 3/8"	50'-2 7/8"	200'-11 1/2"	3/8"	1 1/8"	1 1/8"	38'-3 3/4"	153'-2 7/8"
5	1/2"	3/8"	0"	32'-7 7/8"	130'-7 5/8"	1 5/8"	2 5/8"	1 3/8"	50'-4 3/8"	201'-5 5/8"	3/8"	1 1/4"	1 1/8"	38'-4 7/8"	153'-7 5/8"
6	1/2"	3/8"	0"	32'-8 5/8"	130'-10 1/4"	1 5/8"	2 3/4"	1 1/2"	50'-6"	201'-11 7/8"	3/8"	1 1/4"	1 1/4"	38'-6 1/8"	154'-0 3/8"

P:\66084669\980_CADD\901_Dravings\76C75-Master-Consolidated\Structure\1\082-0323\Sheet\5011_082-0323_76C75_TopSlabElev.dwg



USER NAME = Bhatta
 DESIGNED - DD
 DRAWN - DD
 CHECKED - ATB
 DATE - 03/18/2011

REVISIONS
 REVISIONS
 REVISIONS
 REVISIONS

STATE OF ILLINOIS
 DEPARTMENT OF TRANSPORTATION

TOP OF SLAB ELEVATION PLAN S.N.082-0323
 I-70W OVER I-55, CSX & KCS RAILROADS

SCALE: NONE SHEET NO. S-11 OF S-138 SHEETS STA. TO STA.

F.A.I. RTE. 70	SECTION 82-1-B-1	COUNTY ST. CLAIR	TOTAL SHEETS 319	SHEET NO. 126
S.N. 082-0323 & S.N. 082-0325		CONTRACT NO. 76C75		
FED. ROAD DIST. NO.		ILLINOIS FED. AID PROJECT		