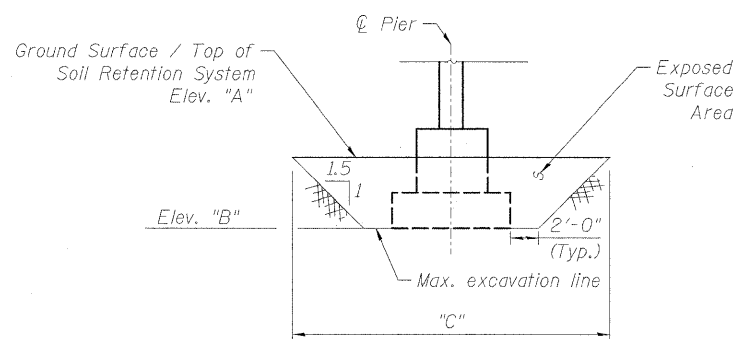
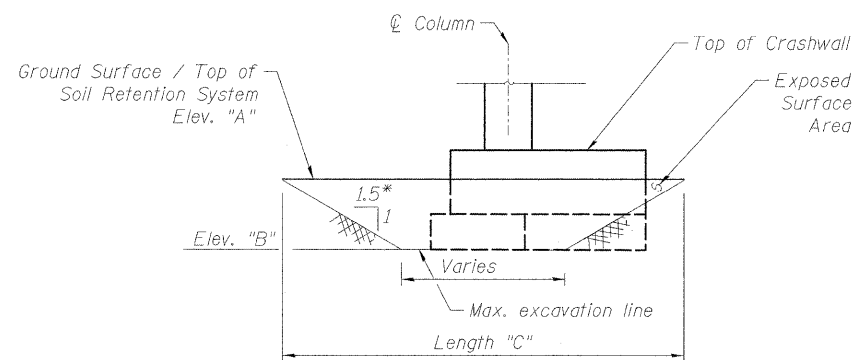


**ELEVATION - TEMP.
SOIL RETENTION SYSTEM AT
PIERS 1 & 2 - SN 082-0325**



**ELEVATION - TEMP.
SOIL RETENTION SYSTEM AT
PIER 4 - SN 082-0325**



**PARTIAL ELEVATION - TEMP.
SOIL RETENTION SYSTEM AT
PIERS 6 & 10 - SN 082-0325**

Pier 6 Shown, Pier 10 is similar

*Rt. angles to proposed face of foundation

Structure	Elev. "A"	Elev. "B"	Length "C" (ft.)
Pier 1	382.87±	378.33	58'-0"±
Pier 2	402.24±	395.85	62'-2"±
Pier 4	411.50±	405.44	39'-11"±
Pier 6	426.75±	421.79	23'-0"±
Pier 10	417.08±	412.00	26'-0"±

BILL OF MATERIALS

Item	Unit	Total
Temporary Soil Retention System	Sq. Ft.	942

NOTES

A cantilevered sheet piling design does not appear feasible and additional members or other retention systems may be necessary. The Contractor shall submit a temporary soil retention system design including plan details and calculations for review and acceptance by the Engineer.



USER NAME = BhostA	DESIGNED - PMM	REVISED -
	DRAWN - PMM	REVISED -
PLOT SCALE = 0.1" = 1'-0"	CHECKED - ATB	REVISED -
PLOT DATE = #DATE#	DATE - 3-30-11	REVISED -

**STATE OF ILLINOIS
DEPARTMENT OF TRANSPORTATION**

**TEMPORARY SOIL RETENTION SYSTEM DETAILS
I-70W OVER I-55, CSX & KCS RAILROADS**

SCALE: NONE SHEET NO. S-10 OF S-138 SHEETS STA. TO STA.

F.A.I. RTE.	SECTION	COUNTY	TOTAL SHEETS	SHEET NO.
70	82-1-B-1	ST. CLAIR	319	125
S.N. 082-0323 & S.N. 082-0325		CONTRACT NO. 76C75		
FED. ROAD DIST. NO.		ILLINOIS FED. AID PROJECT		

F:\P\004668\A\3002 CAD\90LDrawings\76C000\Master_Consolidated\Structural\082-0323\Sheet\3011\082-0323_76C75_TempSoilRet.dgn