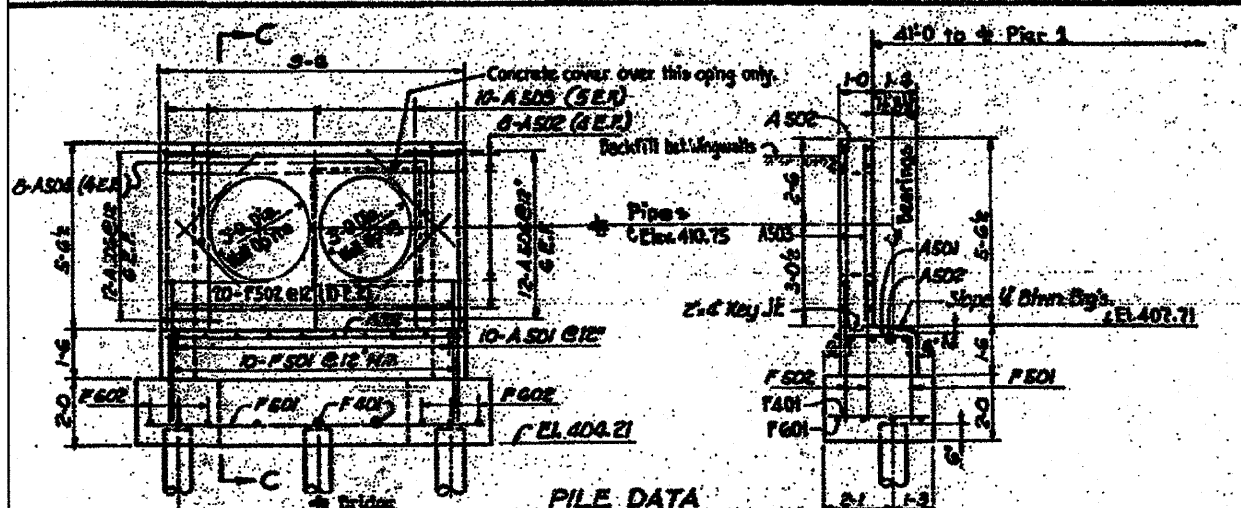
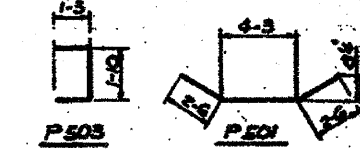


PROJECT NO.	SECTION	COUNTY	TOTAL SHEETS
F.A.I.-70	82-1-B-1	ST. CLAIR	319
FED. ROAD DIST. NO. 7 ILLINOIS PROJECT			SHEET NO. 26

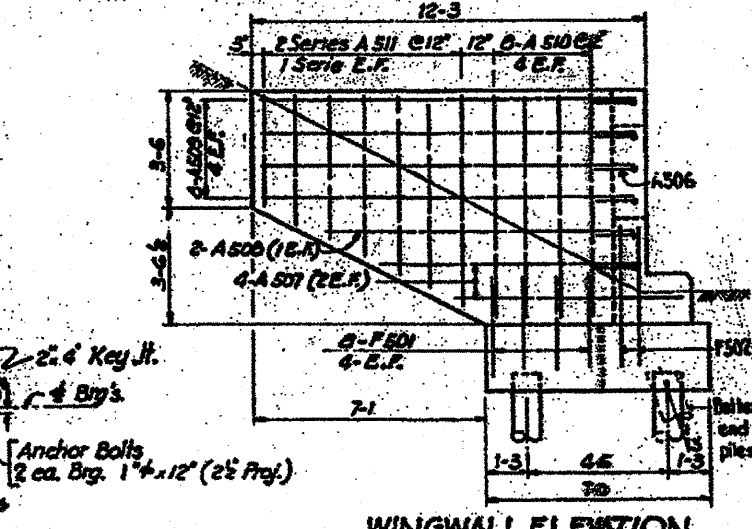
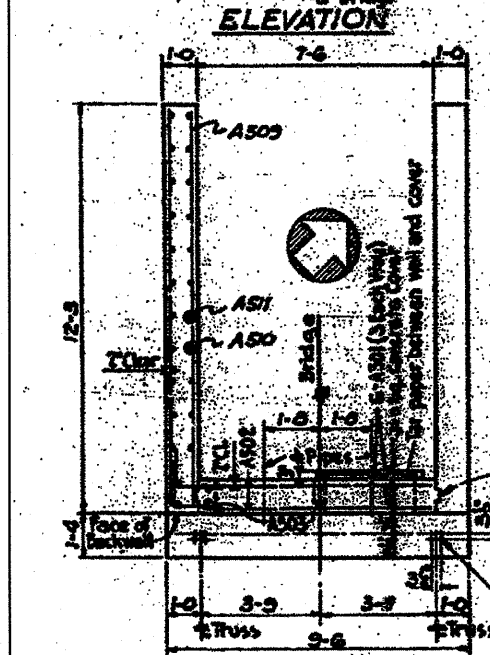
**FILE DATA**

Corrosion Piles  
Capacity : 20 Tons  
Estimated Length : 27 Ft.  
Piles Required : 22 (for 4 piers)  
Test Pile : 4



**FILE DATA**

Corrosion Piles  
Capacity : 20 Tons  
Estimated Length : 27 Ft.  
Piles Required : 4  
Test Pile : One

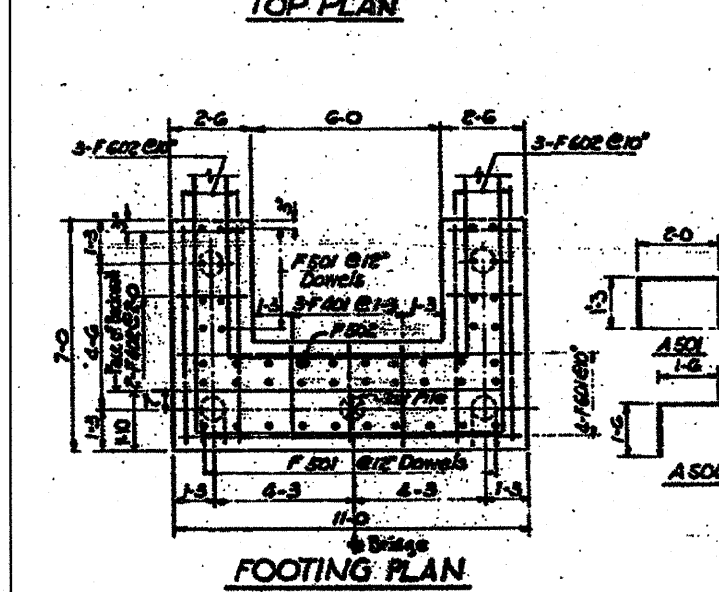


**BAR LIST**

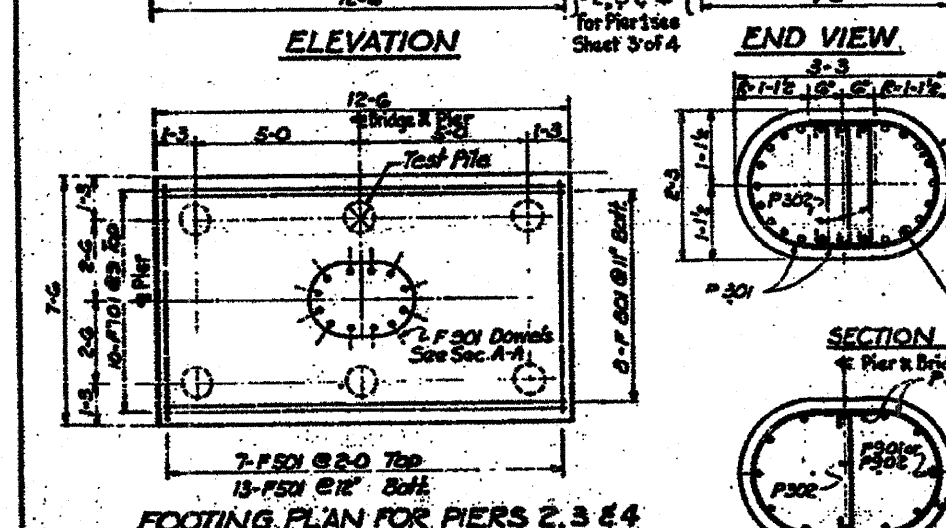
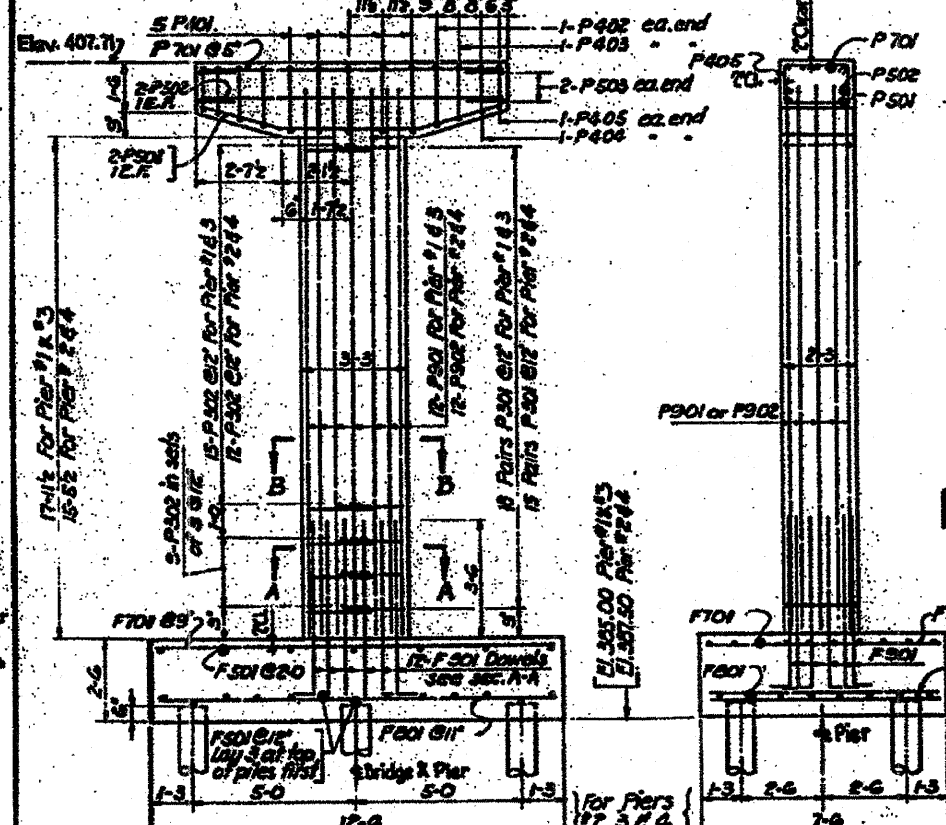
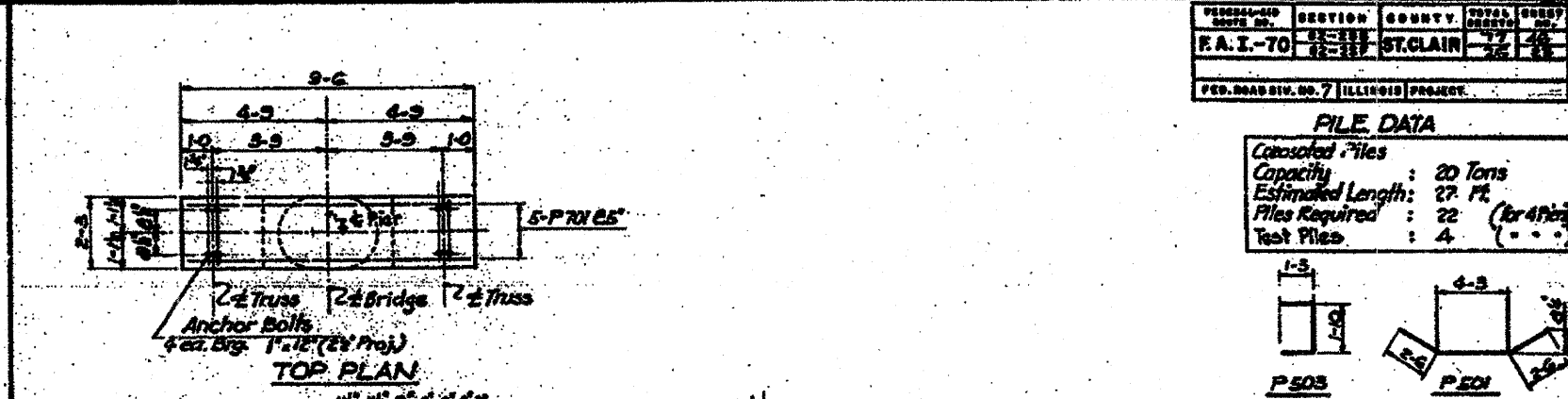
Bar	No.	Size	Length	Shape
F401	5	#8	3-0	—
F402	4	#8	2-2	—
F501	26	#5	2-10	—
F502	20	#5	2-4	—
F601	6	#6	10-8	—
F602	6	#6	6-0	—
A501	6	#3	3-3	—
A502	10	#5	4-2	—
A503	12	#	3-2	—
A504	12	#	5-4	—
A505	8	#	5-5	—
A606	24	#	3-0	—
A507	8	#	7-6	—
A508	4	#	10-0	—
A509	16	#	11-11	—
A510	16	#	7-10	—
A511	4 series 1 bars	#5	from 3/4 to 1-0	—

**BILL OF MATERIAL**

Class X Concrete	Qty	Unit	Qty	Unit	Qty	Unit	Qty	Unit	Total
Class X Concrete	12.7	cu. yd.	15.8	cu. yd.	14.3	cu. yd.	15.8	cu. yd.	58.6
Reinforcement Bars	120	lbs.	140	lbs.	210	lbs.	170	lbs.	640
Corrosion Piles (20 tons)	1	ea.	1	ea.	1	ea.	1	ea.	4
Test Piles (20 tons)	1	ea.	1	ea.	1	ea.	1	ea.	4
Class X Concrete for Structures	60	cu. yd.	53	cu. yd.	70	cu. yd.	53	cu. yd.	236



**NORTH ABUTMENT**  
Scale: 3/4" = 1'-0"



**PIERS**  
Scale: 3/4" = 1'-0" unless noted

**BAR LIST**

Bar	No. Req'd for Pier	Size	Length	Shape
F501	20	#5	7-0	—
F701	10	#7	12-0	—
F503	16	#5	6-6	—
F504	8	#5	3-7	—
F1001	2	#10	12-6	—
F1002	2	#10	10-2	—
F1003	2	#10	7-10	—
F801	8	#8	12-0	—
F802	2	#8	7-6	—
F803	2	#8	10-2	—
F804	2	#8	7-10	—
F301	12	#5	6-4	—
P301	36	#3	5-0	—
P302	24	#3	2-3	—
P401	5	#4	6-6	—
P402	2	#4	6-2	—
P403	2	#4	7-10	—
P404	2	#4	7-6	—
P405	2	#4	7-2	—
P501	2	#5	9-3	—
P502	2	#5	9-2	—
P503	4	#5	4-4	—
P701	5	#7	9-2	—
P901	12	#9	15-9	—
P902	12	#9	17-3	—

**BILL OF MATERIAL**

Class X Concrete	Pier No. 1	Pier No. 2	Pier No. 3	Pier No. 4	Total
Class X Concrete	12.7	15.8	14.3	15.8	58.6
Reinforcement Bars	120	140	210	170	640
Corrosion Piles (20 tons)	1	1	1	1	4
Test Piles (20 tons)	1	1	1	1	4
Class X Concrete for Structures	60	53	70	53	236

**SECTION A-A**  
Scale: 3/4" = 1'-0"

**SECTION B-B**  
Scale: 3/4" = 1'-0"

STATE OF ILLINOIS  
DEPARTMENT OF PUBLIC WORKS & BLDGS.  
DIVISION OF HIGHWAYS

EAST ST. LOUIS & INTERURBAN WATER CO.  
EAST ST. LOUIS EXPRESSWAY  
BRIDGE FOR 2 30" WATER PIPES OVER F.A.I.-07  
NORTH ABUTMENT AND PIERS No. 1, 2, 3 & 4  
H. W. LOCKNER, INC.  
ENGINEERS  
DATE: JULY 1960 CHICAGO ILLINOIS SHEET NO. 26

Designed by: J.R.  
Drawn by: A.B.  
Checked by: M.H.

USER NAME = pmsrno	DESIGNED - CRH	REVISED -	F.A.I. RTE. 70	SECTION 82-1-B-1	COUNTY ST. CLAIR	TOTAL SHEETS 319	SHEET NO. 115
PLOT SCALE = 20,000 / in.	DRAWN - CRH	REVISED -	EXISTING BRIDGE PLAN - 30" WATER PIPES OVER I-554-70		CONTRACT NO. 76C75		
PLOT DATE = #DATE#	CHECKED - DBM	REVISED -	SCALE: NONE	SHEET NO. 2 OF 2 SHEETS	STA. TO STA.		
	DATE - 3-18-11	REVISED -	STATE OF ILLINOIS DEPARTMENT OF TRANSPORTATION		FED. ROAD DIST. NO. [ILLINOIS] FED. AID PROJECT		