



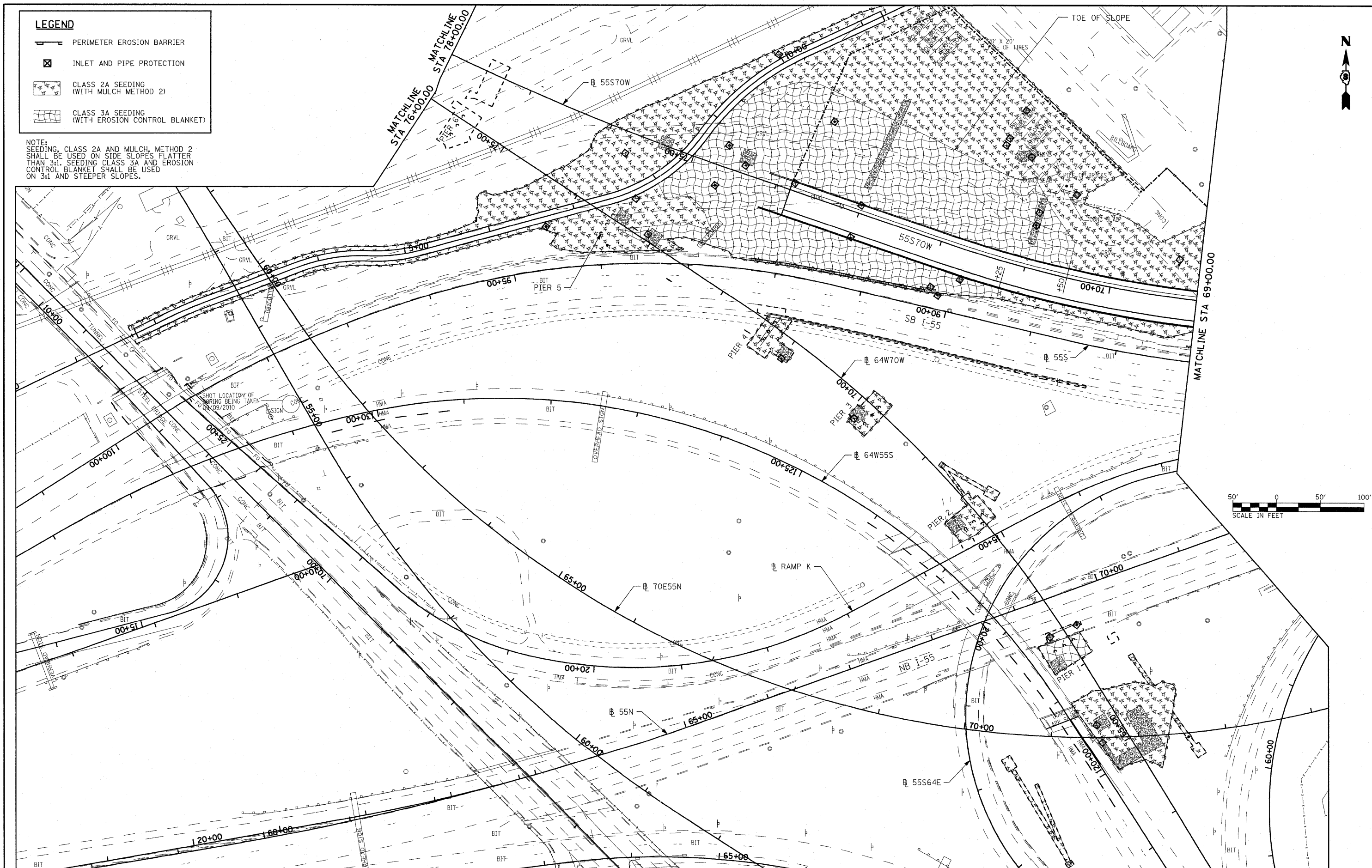


LEGEND

-  PERIMETER EROSION BARRIER
-  INLET AND PIPE PROTECTION
-  CLASS 2A SEEDING (WITH MULCH METHOD 2)
-  CLASS 3A SEEDING (WITH EROSION CONTROL BLANKET)

NOTE:
SEEDING, CLASS 2A AND MULCH, METHOD 2 SHALL BE USED ON SIDE SLOPES FLATTER THAN 3:1. SEEDING CLASS 3A AND EROSION CONTROL BLANKET SHALL BE USED ON 3:1 AND STEEPER SLOPES.



FILE NAME =	USER NAME = escharth	DESIGNED - MAN	REVISED -	STATE OF ILLINOIS DEPARTMENT OF TRANSPORTATION	EROSION CONTROL PLAN	F.A.I. RTE. 70	SECTION 82-1-B-1	COUNTY ST. CLAIR	TOTAL SHEETS 319	SHEET NO. 56
#FILEL#	PLOT SCALE = 100,0000' / IN.	DRAWN - CJS	REVISED -	SCALE: 1"=50' SHEET NO. 2 OF 3 SHEETS STA. NA TO STA. NA		FED. ROAD DIST. NO. [ILLINOIS] FED. AID PROJECT		CONTRACT NO. 76C75		
	PLOT DATE = 3/21/2011	CHECKED - MPW	REVISED -							
		DATE - 3-18-11	REVISED -							