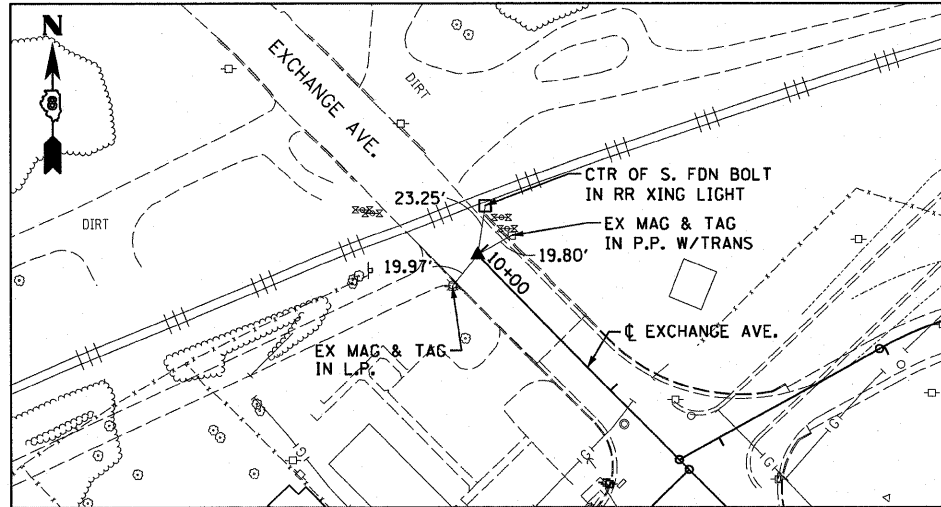
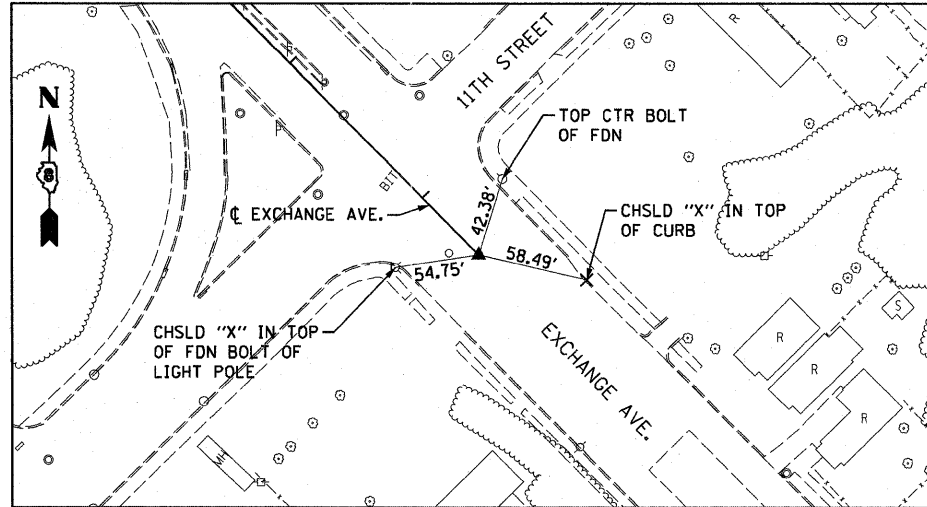


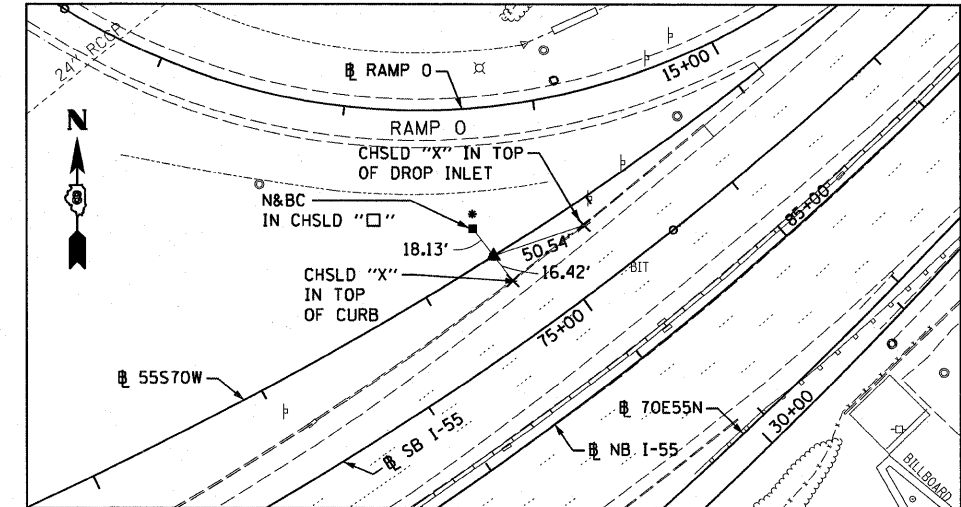
**EXCHANGE AVENUE**  
**POT STA 10+00.00**  
**SET MEG NAIL IN CONC. CRACK W/CHSLD "X"**  
**(CONTROL POINT MAY NEED TO BE RE-ESTABLISHED DUE TO CONSTRUCTION ACTIVITY.)**



**EXCHANGE AVENUE**  
**POT STA 27+42.42**  
**SET MEG NAIL IN CHSLD "□" W/CHSLD "X"**

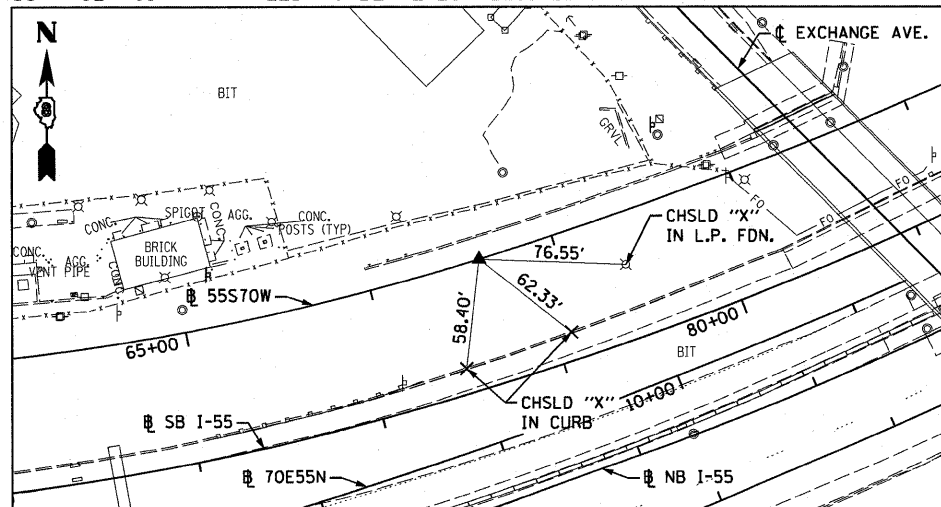


**55S70W**  
**PCC STA 57+58.25**  
**SET 5/8" REBAR W/RED CAP FLUSH W/GR**



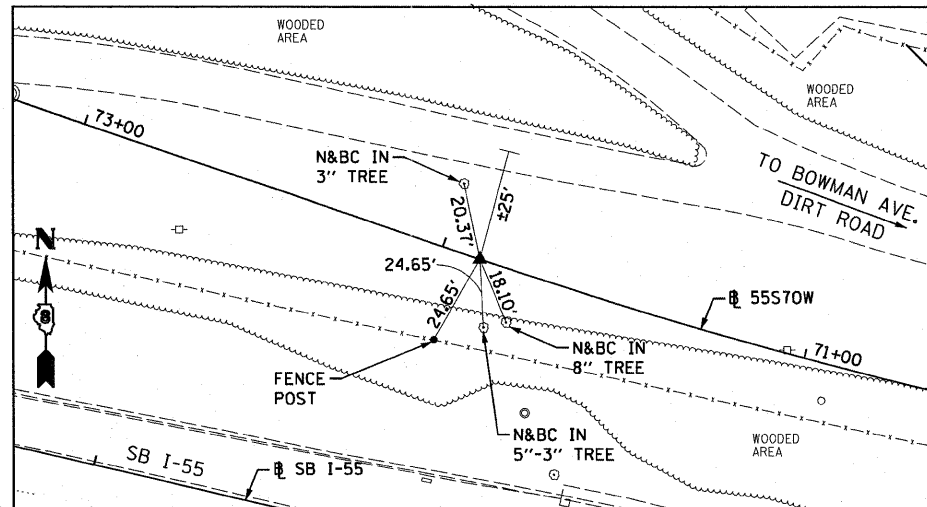
\* POINT NOT AVAILABLE

**55S70W**  
**PCC STA 63+40.22**  
**SET 5/8" REBAR W/RED LINENG CAP FLUSH W/GR**  
**(CONTROL POINT MAY NEED TO BE RE-ESTABLISHED DUE TO CONSTRUCTION ACTIVITY.)**

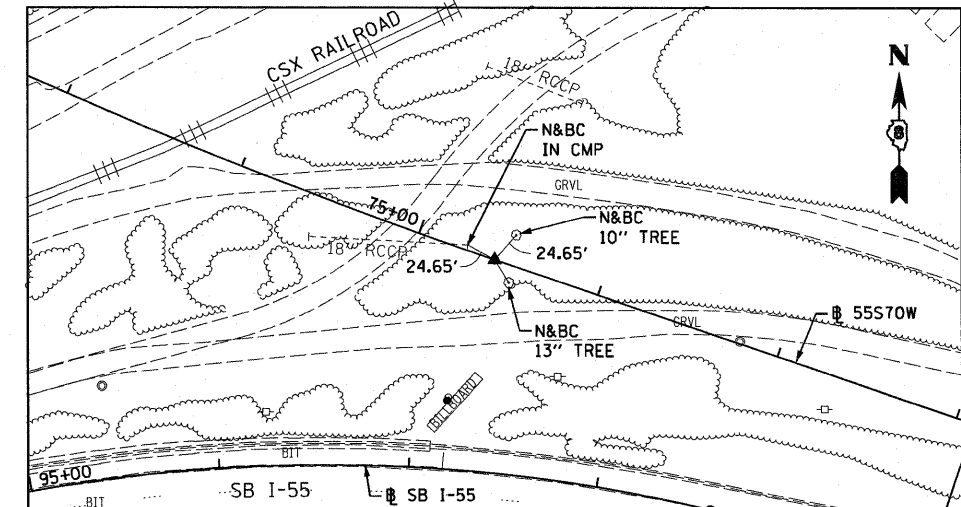


CONTROL POINT MAY NEED TO BE RE-ESTABLISHED DUE TO CONSTRUCTION ACTIVITY.

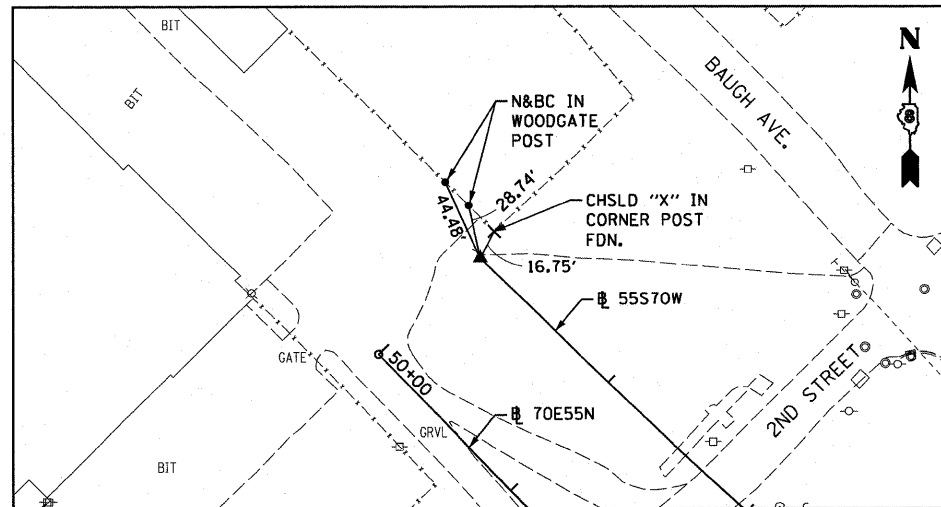
**55S70W**  
**PT STA 71+89.66**  
**SET 5/8" REBAR W/RED CAP FLUSH W/GR**



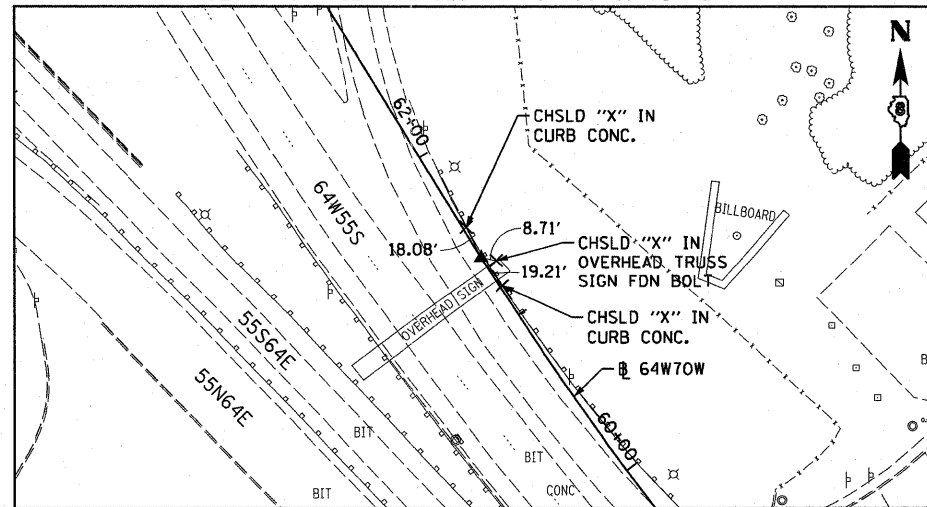
**55S70W**  
**PC STA 74+57.77**  
**SET 5/8" REBAR W/RED LIN TRAV. PT CAP**



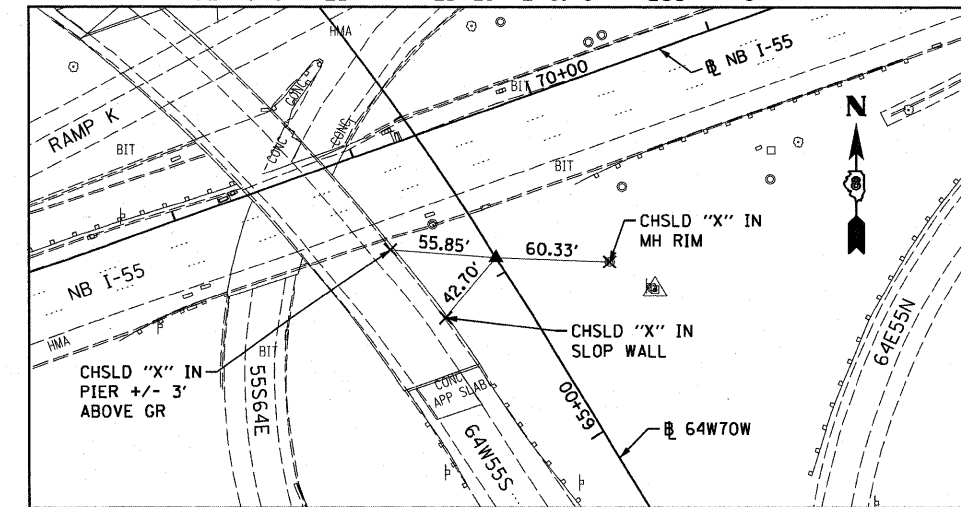
**55S70W**  
**PT STA 87+95.40**  
**SET 5/8" REBAR W/RED LIN ENG. CAP FLUSH W/GR**



**64W70W**  
**PT STA 61+37.22**  
**SET MAG NAIL W/CHSLD "X" IN CONC. GUTTER**



**64W70W**  
**PC STA 66+09.28**  
**SET 5/8" REBAR W/RED LIN ENG. CAP FLUSH W/GR**



USER NAME = Henaoc	DESIGNED - CRH	REVISED -
PLOT SCALE = 100.0000' / 1"	DRAWN - PHP	REVISED -
PLOT DATE = #DATE#	CHECKED - DBM	REVISED -
	DATE - 3-18-11	REVISED -

**STATE OF ILLINOIS**  
**DEPARTMENT OF TRANSPORTATION**

**ALIGNMENT, TIES AND BENCHMARKS**

SCALE: NONE SHEET NO. 5 OF 6 SHEETS STA. TO STA.

F.A.I. RTE. 70	SECTION 82-1-B-1	COUNTY ST. CLAIR	TOTAL SHEETS 319	SHEET NO. 25
FED. ROAD DIST. NO.		ILLINOIS FED. AID PROJECT		