

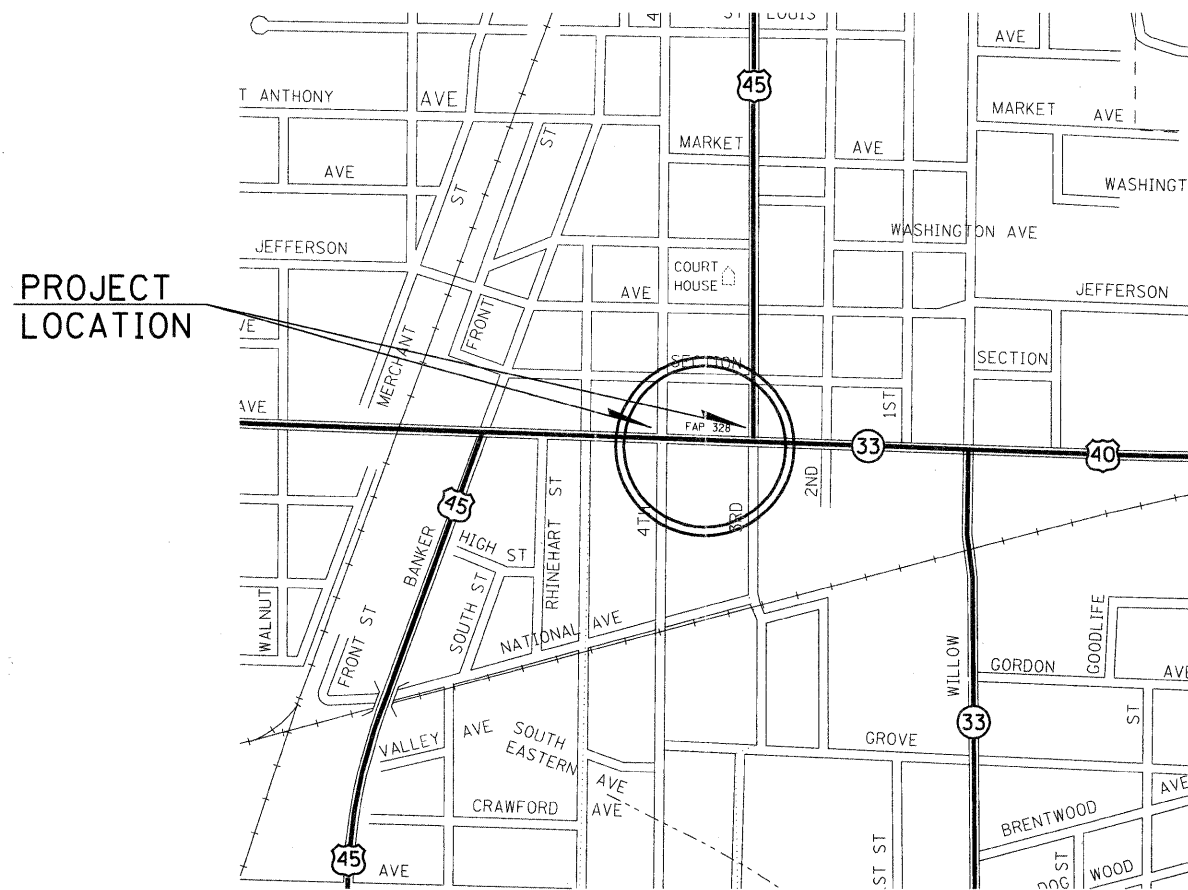
STATE OF ILLINOIS
DEPARTMENT OF TRANSPORTATION
DIVISION OF HIGHWAYS

PROPOSED
HIGHWAY PLANS

FAP ROUTE 95 (U.S. 40)
SECTION D7 SIGNAL MODERNIZATION 2011-1

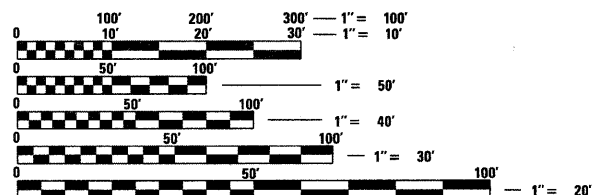
TYPE of IMPROVEMENT
EFFINGHAM COUNTY

C-97-047-11



PROJECT LOCATION

FOR INDEX OF SHEETS, SEE SHEET NO. 2



FULL SIZE PLANS HAVE BEEN PREPARED USING STANDARD ENGINEERING SCALES. REDUCED SIZED PLANS WILL NOT CONFORM TO STANDARD SCALES. IN MAKING MEASUREMENTS ON REDUCED PLANS, THE ABOVE SCALES MAY BE USED.

J.U.L.I.E.
JOINT UTILITY LOCATION INFORMATION FOR EXCAVATION
1-800-892-0123
OR 811

PROJECT ENGINEER-ROB MACKLIN
PROJECT MANAGER-LYNN McCLELLAN

CONTRACT NO. 74517

GROSS LENGTH = 400 FT. = 0.076 MILE
NET LENGTH = 400 FT. = 0.076 MILE

F.A.P. RTE.	SECTION	COUNTY	TOTAL SHEETS	SHEET NO.
95		EFFINGHAM	5	1
		ILLINOIS	CONTRACT NO. 74517	

• D7 SIGNAL MODERNIZATION 2011-1

D-97-017-11



LOCATION OF SECTION INDICATED THUS: - ■ -

STATE OF ILLINOIS
DEPARTMENT OF TRANSPORTATION
DIVISION OF HIGHWAYS

SUBMITTED April 4th 20 11
Roger J. [Signature]
DEPUTY DIRECTOR OF HIGHWAYS, REGION ENGINEER

May 13 20 11
Scott E. Stitt, P.E. [Signature]
ACTING ENGINEER OF DESIGN AND ENVIRONMENT

May 13 20 11
Christine M. [Signature]
DIRECTOR OF HIGHWAYS, CHIEF ENGINEER

PRINTED BY THE AUTHORITY
OF THE STATE OF ILLINOIS