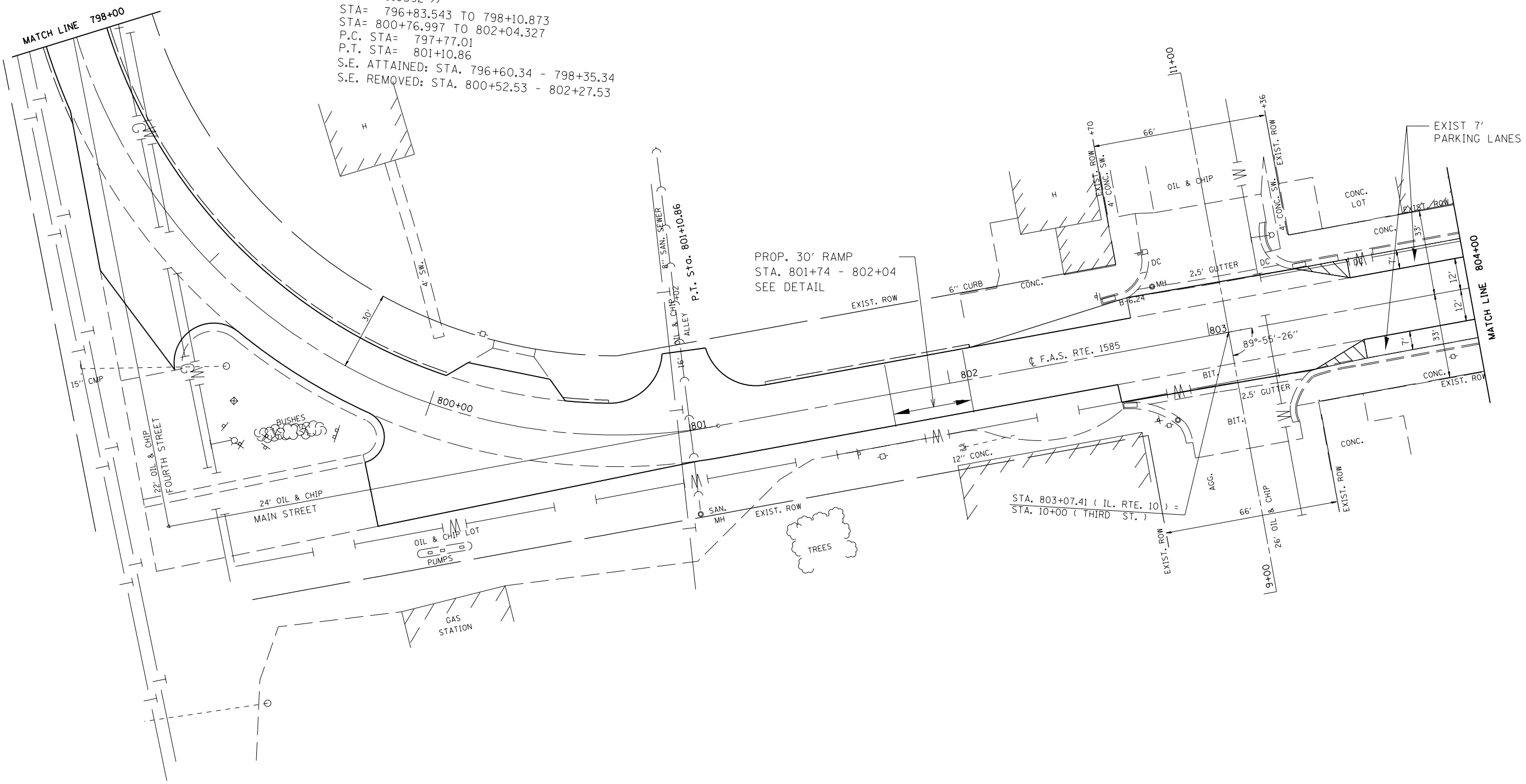


CURVE DATA  
 P.I. STA= 799+88.68  
 $\Delta$ = 89°-21'-16"  
 D= 26°-45'-53"  
 R= 214.07'  
 T= 211.67'  
 L= 333.85'  
 E= 86.98'  
 S.E.= 0.0592 //  
 STA= 796+83.543 TO 798+10.873  
 STA= 800+76.997 TO 802+04.327  
 P.C. STA= 797+77.01  
 P.T. STA= 801+10.86  
 S.E. ATTAINED: STA. 796+60.34 - 798+35.34  
 S.E. REMOVED: STA. 800+52.53 - 802+27.53



PROP. 30' RAMP  
 STA. 801+74 - 802+04  
 SEE DETAIL

STA. 803+07.41 ( IL. RTE. 10 ) =  
 STA. 10+00 ( THIRD ST. )

FILE NAME =	USER NAME = Sparksgw	DESIGNED -	REVISED -
c:\pwork\pwork\sparksgw\0258631\0672\232-sht-plansheets.dgn		DRAWN -	REVISED -
	PLOT SCALE = 100.0000' / 1" =	CHECKED -	REVISED -
	PLOT DATE = Mar-25-2011 04:19:40PM	DATE -	REVISED -

STATE OF ILLINOIS  
 DEPARTMENT OF TRANSPORTATION

PLAN SHEETS			
SCALE:	SHEET NO.	OF SHEETS	STA. TO STA.

F.A. RTE.	SECTION	COUNTY	TOTAL SHEETS	SHEET NO.
572	3RS-4	MASON	38	22
CONTRACT NO. 72E32				
ILLINOIS FED. AID PROJECT				