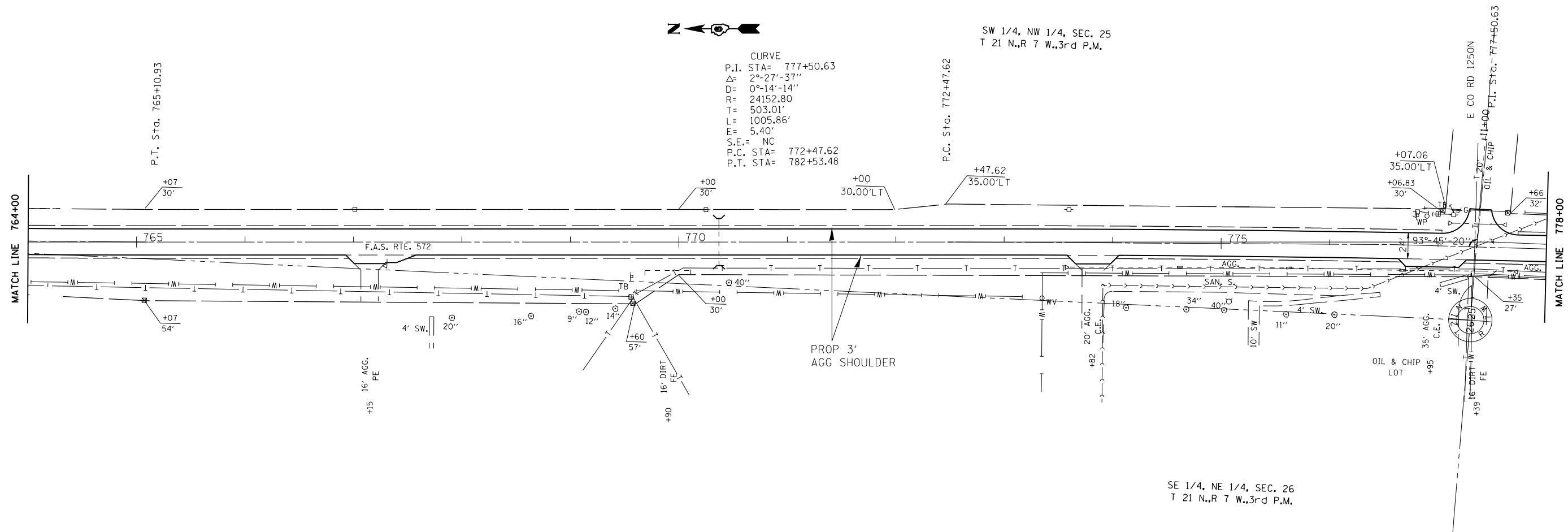




SW 1/4, NW 1/4, SEC. 25
T 21 N., R 7 W., 3rd P.M.

CURVE
P.I. STA= 777+50.63
Δ= 2°-27'-37"
D= 0°-14'-14"
R= 24152.80
T= 503.01'
L= 1005.86'
E= 5.40'
S.E.= NC
P.C. STA= 772+47.62
P.T. STA= 782+53.48

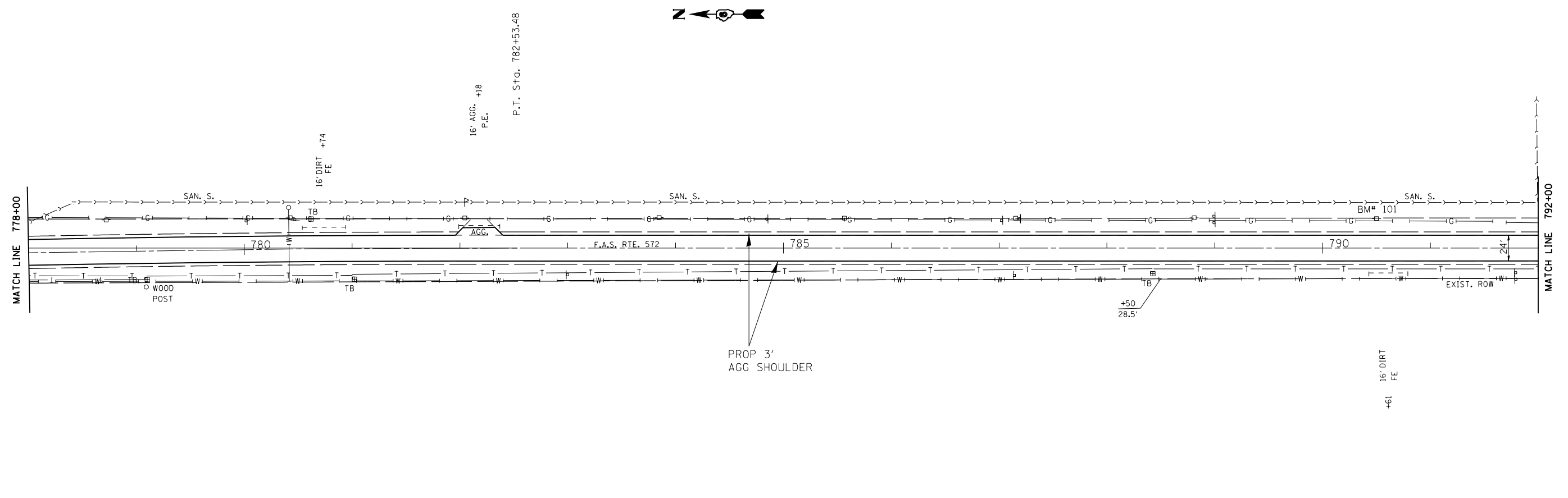


SE 1/4, NE 1/4, SEC. 26
T 21 N., R 7 W., 3rd P.M.



P.T. STA. 782+53.48

16' AGG. +18
P.E.



FILE NAME =	USER NAME = Sparksgw	DESIGNED -	REVISED -
c:\pw\work\p\idot\sparksgw\0258631\0672E32-sht-plansheets.dgn		DRAWN -	REVISED -
	PLOT SCALE = 100.0000' / 1in.	CHECKED -	REVISED -
	PLOT DATE = Mar-25-2011 04:19:39PM	DATE -	REVISED -

**STATE OF ILLINOIS
DEPARTMENT OF TRANSPORTATION**

PLAN SHEETS

SCALE: SHEET NO. OF SHEETS STA. TO STA.

F.A. RTE.	SECTION	COUNTY	TOTAL SHEETS	SHEET NO.
572	3RS-4	MASON	38	20
CONTRACT NO. 72E32				
ILLINOIS FED. AID PROJECT				