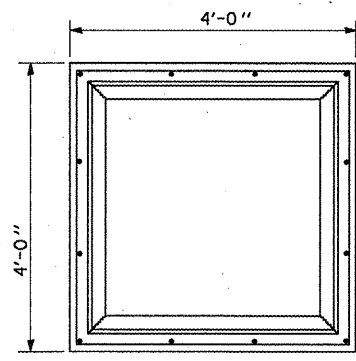
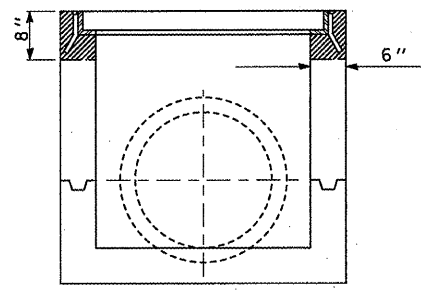


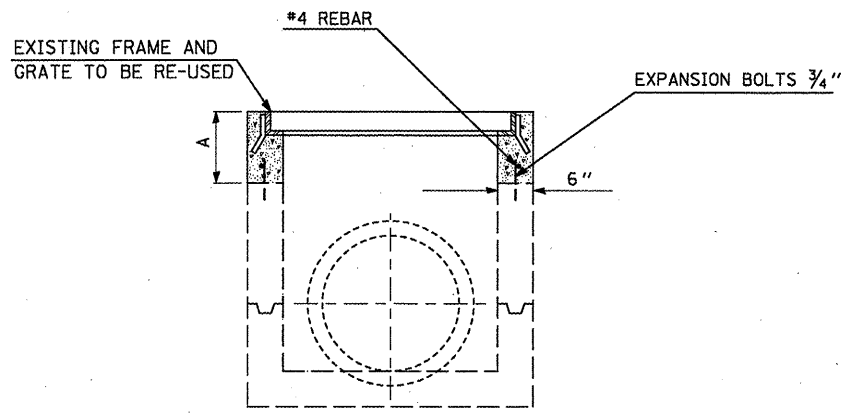
# INLET BOXES TO BE ADJUSTED (SPECIAL)





PLAN  
(Grating omitted for clarity)



EXISTING



PROPOSED

 CONCRETE REMOVAL  
 CLASS S.I. CONCRETE

## NOTES

EXPANSION BOLTS SHALL EXTEND A MINIMUM 9" INTO THE EXISTING AND PROPOSED CONCRETE

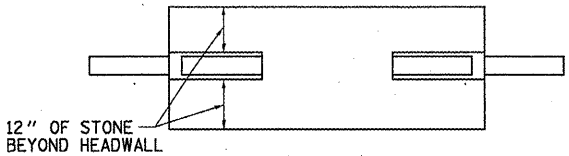
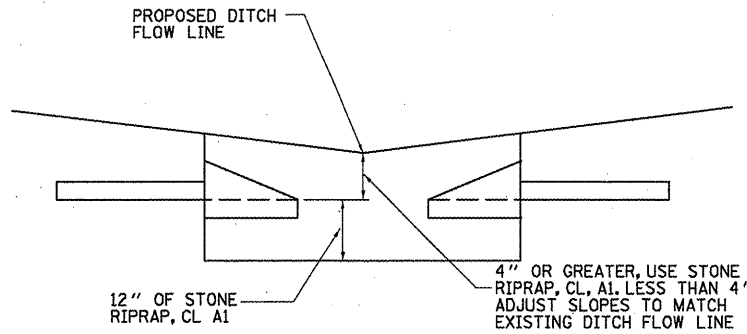
ALL WORK AND MATERIALS SHALL BE IN ACCORDANCE WITH APPLICABLE PORTIONS OF SECTION 602.

THIS WORK WILL BE PAID FOR AT THE CONTRACT UNIT PRICE EACH FOR "INLETS BOXES TO BE ADJUSTED (SPECIAL)" WHICH SHALL INCLUDE ALL LABOR, EQUIPMENT & MATERIAL NECESSARY TO COMPLETE THE WORK.

ESTIMATE QUANTITIES:  
 CONCRETE REMOVAL 0.13 CU YD  
 CLASS S.I. CONCRETE 0.37 CU YD AT STA. 1607+00  
 CLASS S.I. CONCRETE 0.24 CU YD AT STA. 1725+00  
 REINFORCEMENT BARS 9.4 LBS  
 EXPANSION BOLTS 12.0 EACH

A = 1'-7" AT STA. 1607+00  
 A = 1'-1" AT STA. 1725+00

# UNDERDRAIN OUTLET BELOW DITCH GRADE



12" OF STONE BEYOND HEADWALL

**REVISIED SHEET 6-6-11**

FILE NAME =	USER NAME = keyarb	DESIGNED -	REVISED -	<b>STATE OF ILLINOIS DEPARTMENT OF TRANSPORTATION</b>	<b>INLET BOXES TO BE ADJUSTED (SPECIAL) DETAIL PIPE UNDERDRAIN OUTLET BELOW GRADE DETAIL</b>	F.A.I. RTE.	SECTION	COUNTY	TOTAL SHEETS	SHEET NO.	
o:\pw_work\pvidos\keyarb\0261049\05709	7-shit-details.dgn	DRAWN -	REVISED -			74	FY11 HSIP-5	MCLEAN	101	32	
PLOT SCALE = 40,0000' / in.		CHECKED -	REVISED -			CONTRACT NO. 70927					
PLOT DATE = 5/5/2011		DATE -	REVISED -			SCALE:	SHEET NO. OF SHEETS	STA. TO STA.	FED. ROAD DIST. NO.	ILLINOIS FED. AID PROJECT	