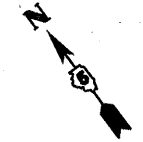
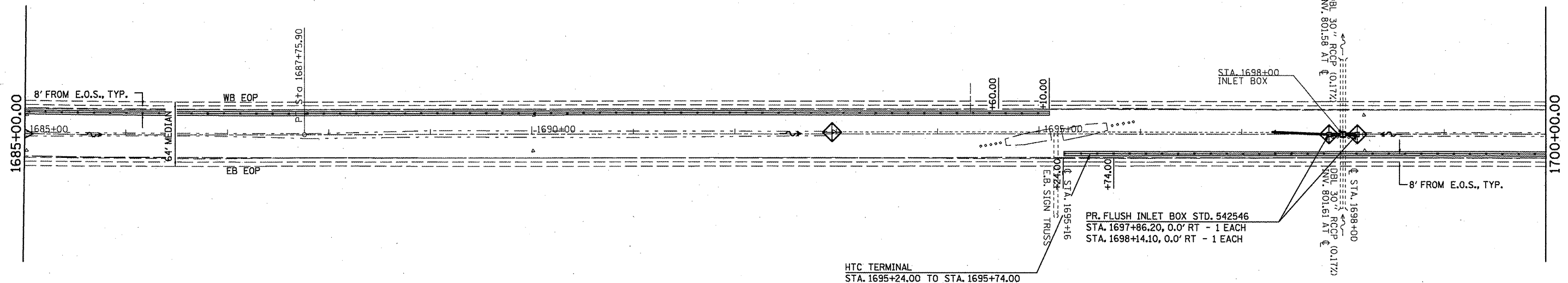


NOTE: REMOVAL AND DISPOSAL OF THE METAL END SECTION AT STA. 1697+30 SHALL BE CONSIDERED INCLUDED IN THE COST VARIOUS DRAINAGE PAY ITEMS.



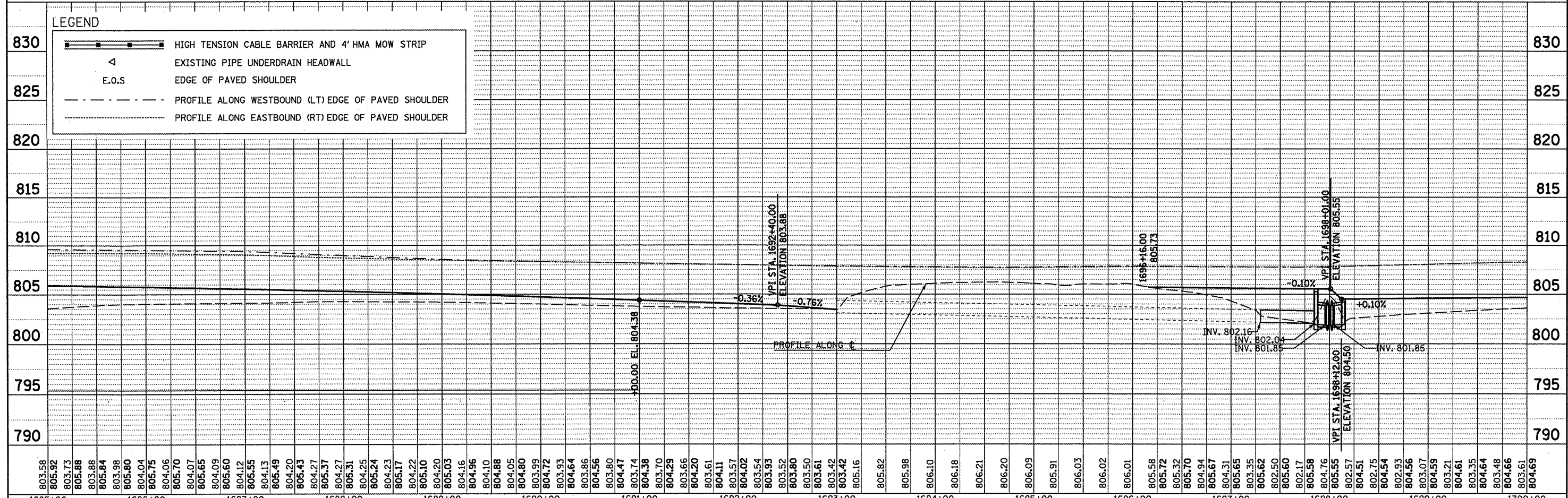
PL AN	DATE
BY	
REVISIONS	
NO.	
DESCRIPTION	



- MEDIAN INLET BOX REMOVAL - 1 EACH
- PIPE CULVERT, CL A, TY1, 24" - 14 FOOT
- PIPE CULVERT, CL D, TY1, 15" - 55 FOOT
- 30" PIPE TEE WITH 24" RISER - 2 EACH
- CONCRETE COLLAR - 2.53 CU YD

LEGEND

	HIGH TENSION CABLE BARRIER AND 4' HMA MOW STRIP
	EXISTING PIPE UNDERDRAIN HEADWALL
	E.O.S
	PROFILE ALONG WESTBOUND (LT) EDGE OF PAVED SHOULDER
	PROFILE ALONG EASTBOUND (RT) EDGE OF PAVED SHOULDER



PROFILE	DATE
BY	
REVISIONS	
NO.	
DESCRIPTION	

FILE NAME =	USER NAME = keysrb	DESIGNED -	REVISED -	<p align="center">STATE OF ILLINOIS DEPARTMENT OF TRANSPORTATION</p> <p align="center">REVISION SHEET 6-6-11</p> <p>SCALE: SHEET NO. OF SHEETS STA. TO STA.</p>	F.A.T. SECTION COUNTY TOTAL SHEET NO.
at:\pwork\pwork\keysrb\0261049\0570927	shtr-plnpr-f.50.dgn	DRAWN -	REVISED -		74 FY11 HSIP-5 MCLEAN 101 18
PLOT SCALE = 1/8" = 100.0000' / in.		CHECKED -	REVISED -		CONTRACT NO. 70927
PLOT DATE = 5/5/2011		DATE -	REVISED -		ILLINOIS FED. AID PROJECT