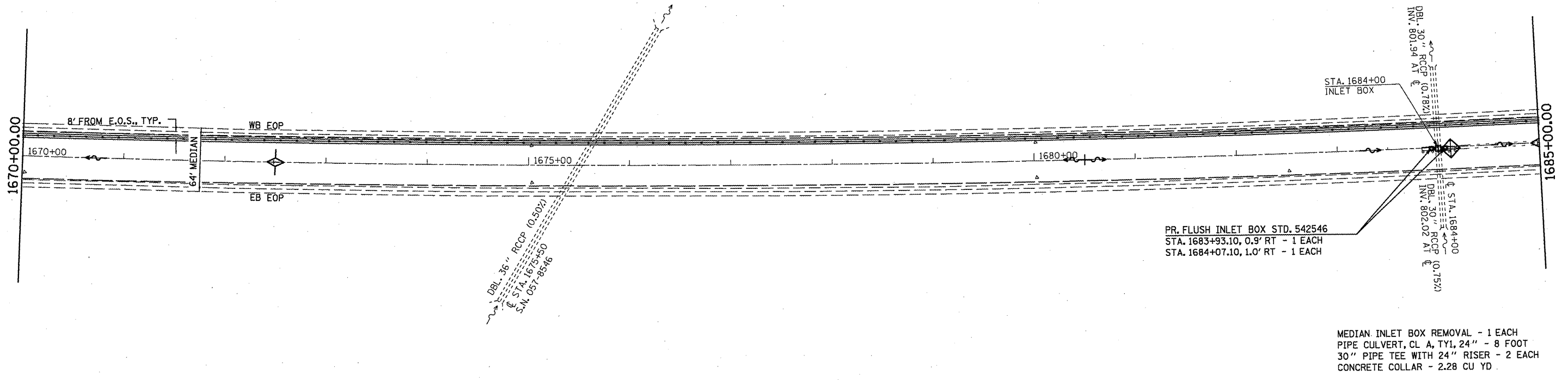


PLAN	SURVEYED	DATE
	BY	
	NO.	
	DATE	
	BY	
	NO.	
	DATE	

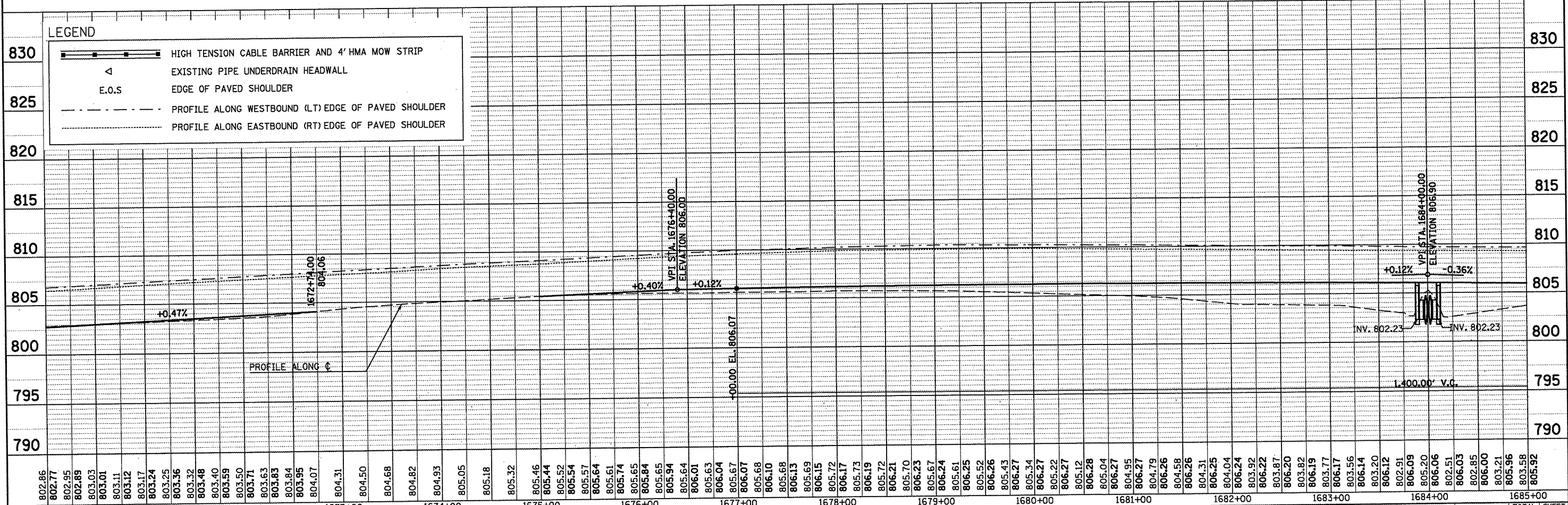


PR. FLUSH INLET BOX STD. 542546
 STA. 1683+93.10, 0.9' RT - 1 EACH
 STA. 1684+07.10, 1.0' RT - 1 EACH

MEDIAN INLET BOX REMOVAL - 1 EACH
 PIPE CULVERT, CL A, TY1, 24" - 8 FOOT
 30" PIPE TEE WITH 24" RISER - 2 EACH
 CONCRETE COLLAR - 2.28 CU YD

PROFILE	SURVEYED	DATE
	BY	
	NO.	
	DATE	
	BY	
	NO.	
	DATE	

LEGEND	
	HIGH TENSION CABLE BARRIER AND 4' HMA MOW STRIP
	EXISTING PIPE UNDERDRAIN HEADWALL
	E.O.S
	PROFILE ALONG WESTBOUND (LT) EDGE OF PAVED SHOULDER
	PROFILE ALONG EASTBOUND (RT) EDGE OF PAVED SHOULDER



802.86	802.77	802.95	802.89	803.03	803.01	803.11	803.12	803.17	803.24	803.25	803.36	803.32	803.48	803.40	803.59	803.50	803.71	803.63	803.83	803.84	803.95	804.07	804.31	804.50	804.68	804.82	804.93	805.05	805.18	805.32	805.46	805.44	805.52	805.54	805.57	805.64	805.61	805.74	805.65	805.84	805.95	805.64	806.01	805.63	806.04	805.67	805.68	805.68	806.10	805.68	806.13	805.69	806.15	805.72	806.17	805.73	806.19	805.72	806.21	805.70	806.23	805.67	806.24	805.61	806.25	805.52	806.26	805.43	806.27	805.34	806.27	805.22	806.27	805.12	806.28	805.04	806.27	804.95	806.27	804.79	806.26	804.58	806.26	804.31	806.25	804.04	806.24	803.92	806.22	803.87	806.20	803.82	806.19	803.77	806.17	803.56	806.14	803.20	806.12	802.91	806.09	805.20	806.06	802.51	806.03	802.85	806.00	803.21	805.96	803.58	805.92
1670+00	1671+00	1672+00	1673+00	1674+00	1675+00	1676+00	1677+00	1678+00	1679+00	1680+00	1681+00	1682+00	1683+00	1684+00	1685+00																																																																																																
FILE NAME =	USER NAME = keyarb	DESIGNED -	REVISED -	STATE OF ILLINOIS												F.A.I. RTE. 74	SECTION FY11 HSIP-5	COUNTY MCLEAN	TOTAL SHEETS 101	SHEET NO. 17																																																																																											
DRAWN -		REVISED -		DEPARTMENT OF TRANSPORTATION												REVISIONS																																																																																															
CHECKED -		REVISED -		SCALE: 1/8" = 1'-0"												SHEET NO. OF SHEETS STA. TO STA.																																																																																															
PLOT DATE = 5/5/2011		DATE -		ILLINOIS FED. AID PROJECT												CONTRACT NO. 70927																																																																																															

REVISED SHEET 6-6-11

PLAN AND PROFILE

F.A.I. RTE. 74	SECTION FY11 HSIP-5	COUNTY MCLEAN	TOTAL SHEETS 101	SHEET NO. 17
CONTRACT NO. 70927				