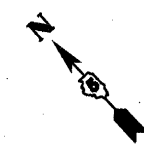
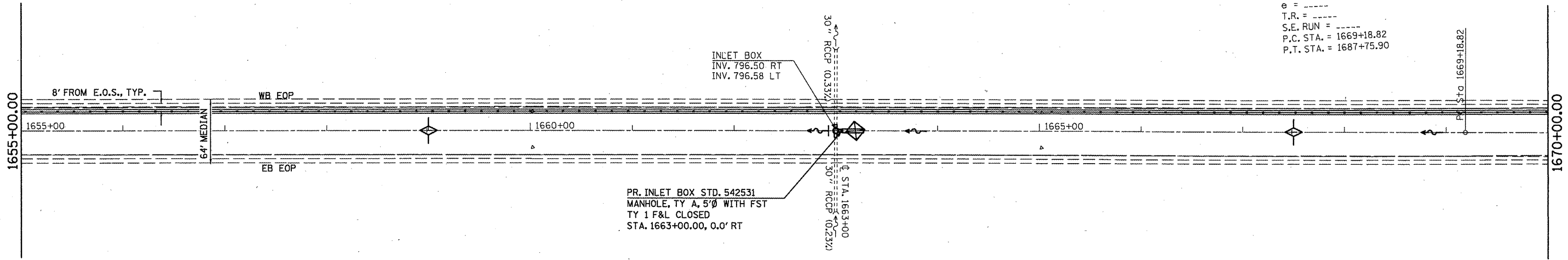


EXIST. CURVE 50
 PI STA. = 1678+48.27
 $\Delta = 6^\circ 11' 25''$ (LT)
 $D = 0^\circ 20' 00''$
 $R = 17,188.88'$
 $T = 929.44'$
 $L = 1,857.08'$
 $E = 25.11'$
 $e = \text{---}$
 $T.R. = \text{---}$
 $S.E. RUN = \text{---}$
 $P.C. STA. = 1669+18.82$
 $P.T. STA. = 1687+75.90$



PLAN	SURVEYED	BY	DATE
	PLOTTED		
	CHECKED		
	BY		
	DATE		

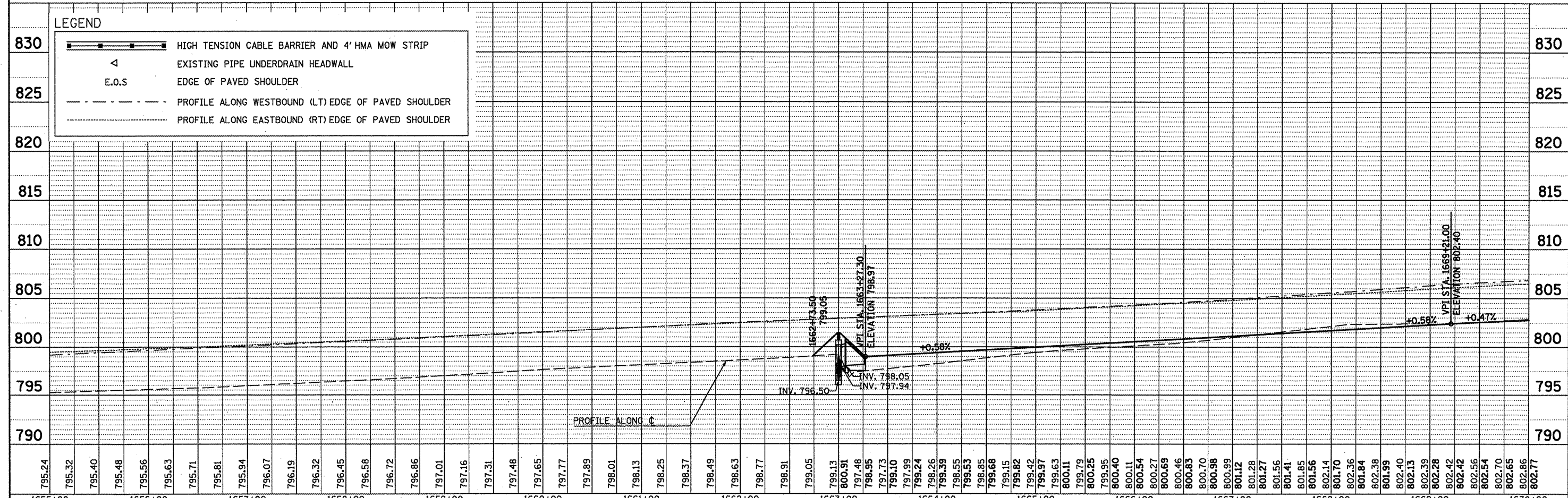


PR. INLET BOX STD. 542531
 MANHOLE, TY A, 5'Ø WITH FST
 TY 1 F&L CLOSED
 STA. 1663+00.00, 0.0' RT

MEDIAN INLET BOX REMOVAL - 1 EACH
 PIPE CULVERT, CL A, TY1, 24" - 5 FOOT
 PIPE CULVERT, CL A, TY1, 30" - 8 FOOT
 CONCRETE COLLAR - 1.14 CU YD

LEGEND

	HIGH TENSION CABLE BARRIER AND 4' HMA MOW STRIP
	EXISTING PIPE UNDERDRAIN HEADWALL
	E.O.S
	PROFILE ALONG WESTBOUND (LT) EDGE OF PAVED SHOULDER
	PROFILE ALONG EASTBOUND (RT) EDGE OF PAVED SHOULDER



PROFILE	SURVEYED	BY	DATE
	PLOTTED		
	CHECKED		
	BY		
	DATE		

FILE NAME =	USER NAME = keyarb	DESIGNED -	REVISED -	<p>REVISED SHEET 6-6-11</p> <p>SCALE: SHEET NO. OF SHEETS STA. TO STA.</p>	<p>F.A.I. RTE. 74</p> <p>SECTION COUNTY TOTAL SHEETS SHEET NO.</p> <p>FY11 HSIP-5 MCLEAN 101 16</p> <p>CONTRACT NO. 70927</p>
cd:\p\work\p\work\keyarb\20261049\0570927	shp\plnprf_58.dgn	DRAWN -	REVISED -		
	PLOT SCALE = 100.0000' / 1"	CHECKED -	REVISED -		
	PLOT DATE = 5/5/2011	DATE -	REVISED -		

STATE OF ILLINOIS
 DEPARTMENT OF TRANSPORTATION

PLAN AND PROFILE

ILLINOIS FED. AID PROJECT