

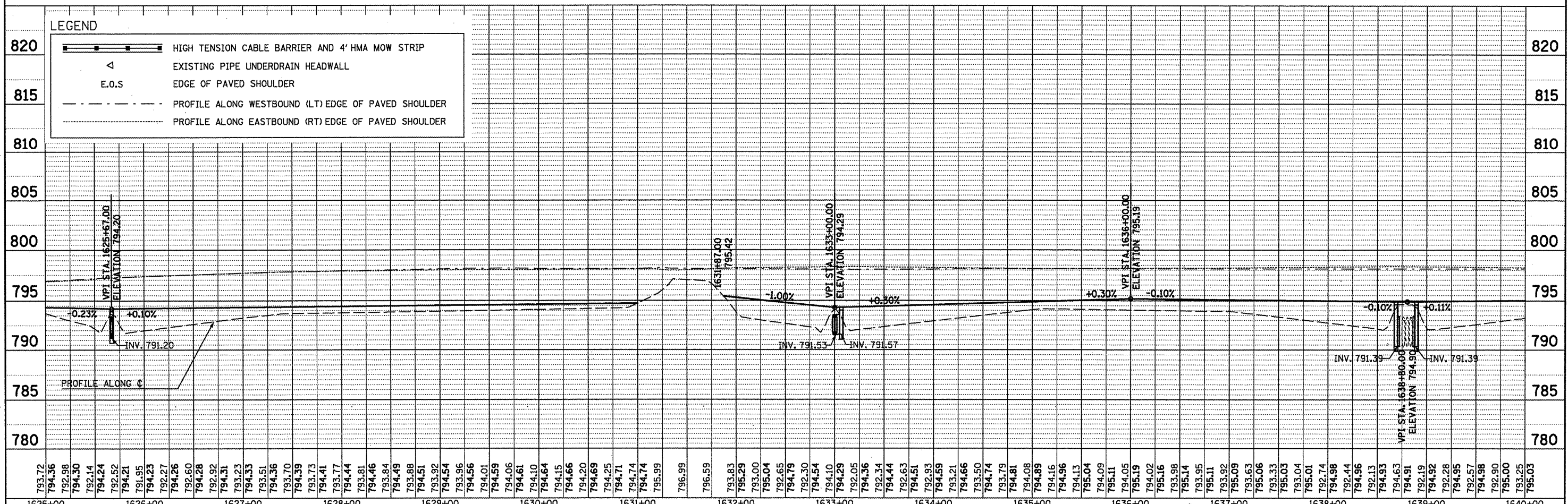
MEDIAN INLET BOX REMOVAL - 1 EACH
 PIPE CULVERT, CL A, TY1, 24" - 8 FOOT
 CONCRETE COLLAR - 0.9 CU YD

MEDIAN INLET BOX REMOVAL - 1 EACH
 PIPE CULVERT, CL A, TY1, 24" - 10 FOOT
 24" PIPE TEE WITH 24" RISER - 1 EACH
 CONCRETE COLLAR - 1.8 CU YD

MEDIAN INLET BOX REMOVAL - 2 EACH
 PIPE CULVERT, CL A, TY1, 24" - 4 FOOT
 CONCRETE COLLAR - 0.9 CU YD

LEGEND

- HIGH TENSION CABLE BARRIER AND 4' HMA MOW STRIP
- EXISTING PIPE UNDERDRAIN HEADWALL
- E.O.S. EDGE OF PAVED SHOULDER
- PROFILE ALONG WESTBOUND (LT) EDGE OF PAVED SHOULDER
- PROFILE ALONG EASTBOUND (RT) EDGE OF PAVED SHOULDER



DATE	
BY	
REVISED	
ALIGNED	
CHECKED	
NO.	
FILE NAME	
NO.	

DATE	
BY	
REVISED	
ALIGNED	
CHECKED	
NO.	
FILE NAME	
NO.	

FILE NAME =	USER NAME = kejarb	DESIGNED -	REVISED -	STATE OF ILLINOIS DEPARTMENT OF TRANSPORTATION REVISION SHEET 6-6-11 PLAN AND PROFILE SCALE: SHEET NO. OF SHEETS STA. TO STA.	F.A.T. RTE.	SECTION	COUNTY	TOTAL SHEETS	SHEET NO.	
cs:\pwork\pudot\kejarb\0281049\0578927	sht-plnprf_50.dgn	DRAWN -	REVISED -		74	FY11 HSP-5	MCLEAN	101	14	
PLOT SCALE = 1/8" = 100.0000' / 1"		CHECKED -	REVISED -		CONTRACT NO. 70927					
PLOT DATE = 5/5/2011		DATE -	REVISED -		ILLINOIS FED. AID PROJECT					