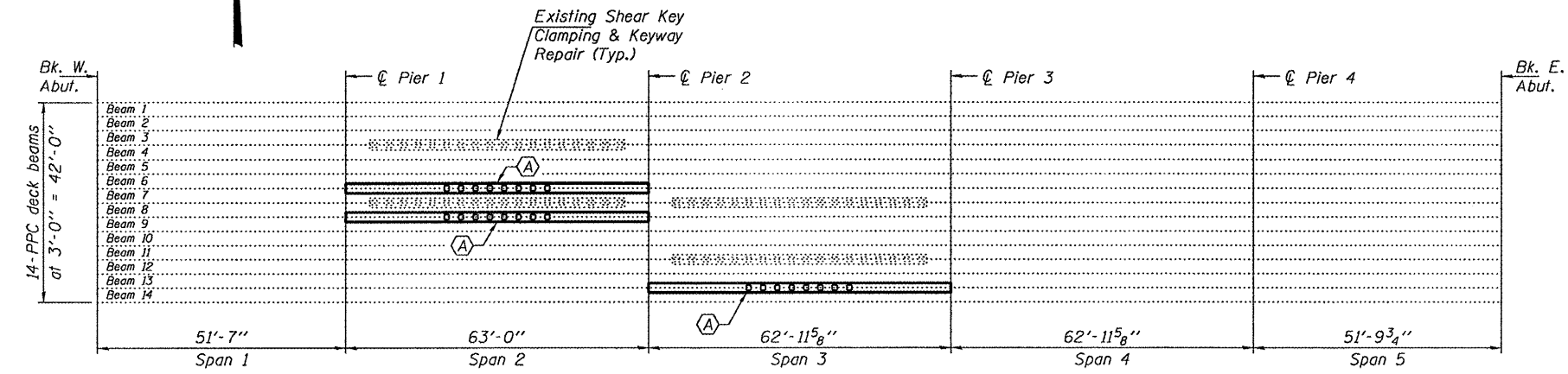


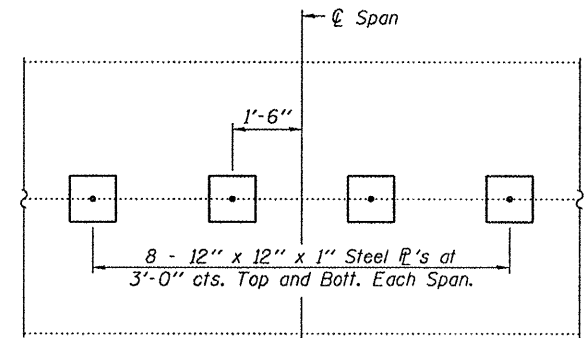
**ELEVATION**



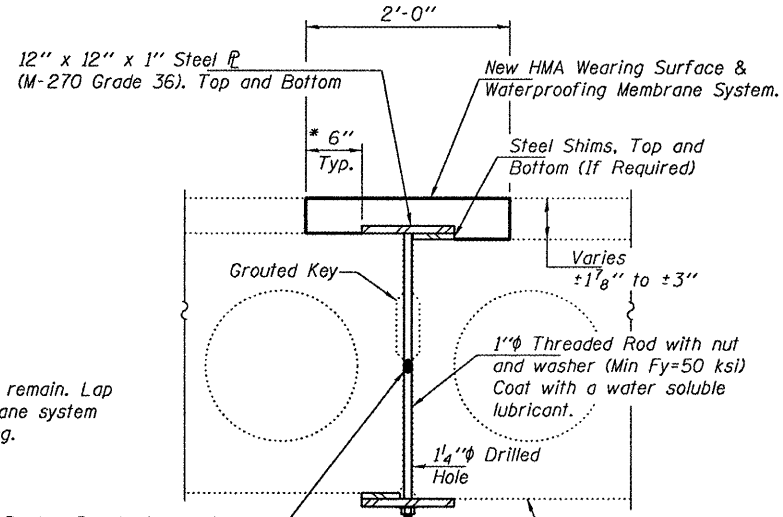
**PLAN**

⊕ - Shear Key Clamping Device Installation & Keyway Repair

**GENERAL NOTES**  
 All structural steel shall conform to AASHTO Classification M-270 Gr. 36, unless otherwise noted.  
 Plan dimensions and details relative to existing plans are subject to nominal construction variations. The Contractor shall field verify existing dimensions and details affecting new construction and make necessary approved adjustments prior to construction or ordering of materials. Such variations shall not be cause for additional compensation for a change in scope of the work, however, the Contractor will be paid for the quantity actually furnished at the unit price bid for the work.  
 The shear key clamping devices shall be galvanized after shop fabrication according to AASHTO M111 and ASTM 385.

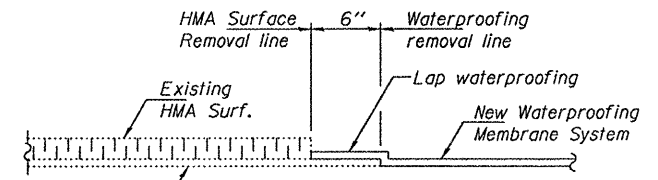


**PLAN**

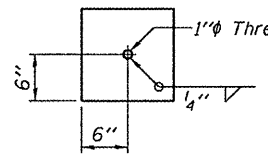


**SHEAR KEY CLAMPING DEVICE**

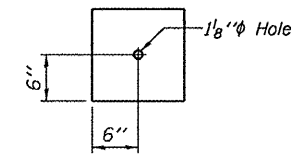
Cost included with Keyway Repair (24 Required)



**WATERPROOFING TREATMENT**



**TOP CLAMPING**



**BOTTOM CLAMPING**

**SHEAR KEY CLAMPING CONSTRUCTION SEQUENCE**

1. Install 8 shear key clamping devices (4 on each side of  $\varnothing$  span).
2. Install backer rod in open joint.
3. Grout shear keys and cure for a minimum of 24 hours.

\* Existing waterproofing to remain. Lap new waterproofing membrane system with existing waterproofing.  
 Backer Rod having a diameter 25% greater than the joint opening at the time of installation. Cost included in the cost of Keyway Repair.

**TOTAL BILL OF MATERIAL**

ITEM	UNIT	QUANTITY
Hot-Mix Asphalt Surface Course, Mix "D", N50	Tons	7.0
HMA Surface Removal (Deck)	Sq. Yd.	42
Waterproofing Membrane System	Sq. Yd.	42
PC Mortar Fairing Course	Foot	189
Keyway Repair	Foot	189



DESIGNED - <i>David Puzey</i>	EXAMINED - <i>Jan F. [Signature]</i>	DATE - MARCH 14, 2011
CHECKED - <i>Kyle M. Steffen</i>	PASSED - <i>[Signature]</i>	
DRAWN - <i>ADY</i>		
CHECKED - <i>ADY</i>		

STATE OF ILLINOIS  
 DEPARTMENT OF TRANSPORTATION

GENERAL PLAN, ELEVATION & REPAIR DETAILS  
 SN 057-0093

SHEET NO. 1 OF 1 SHEETS

F.A.P. RTE. 315	SECTION Posting Mitigation	COUNTY McLEAN	TOTAL SHEETS 16	SHEET NO. 5
			CONTRACT NO. 70895	
ILLINOIS FED. AID PROJECT				