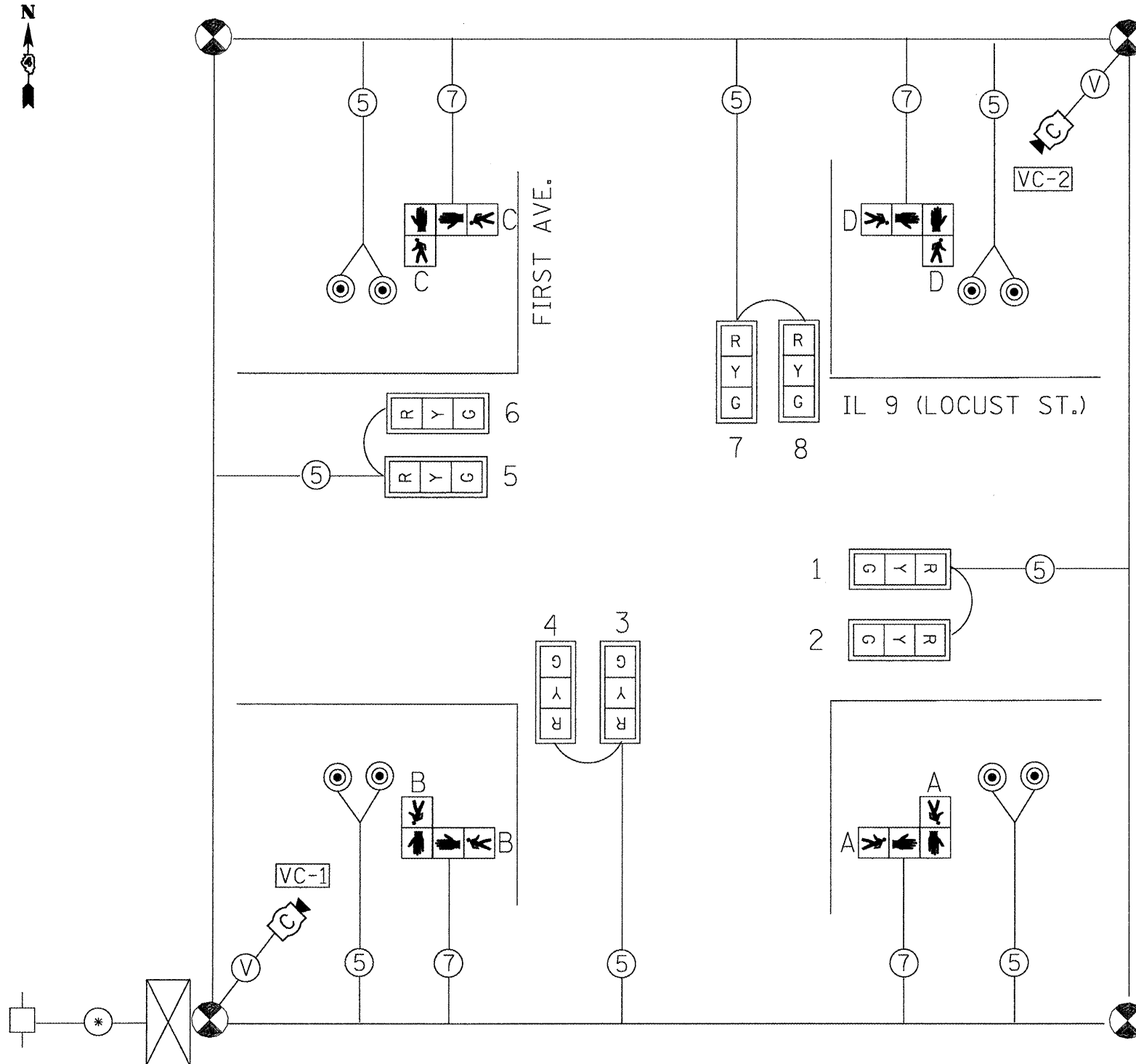
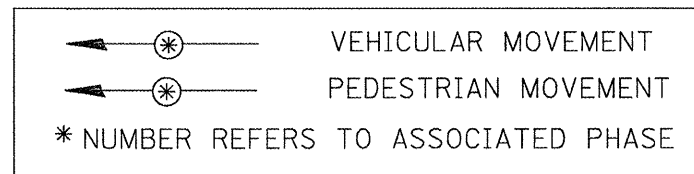
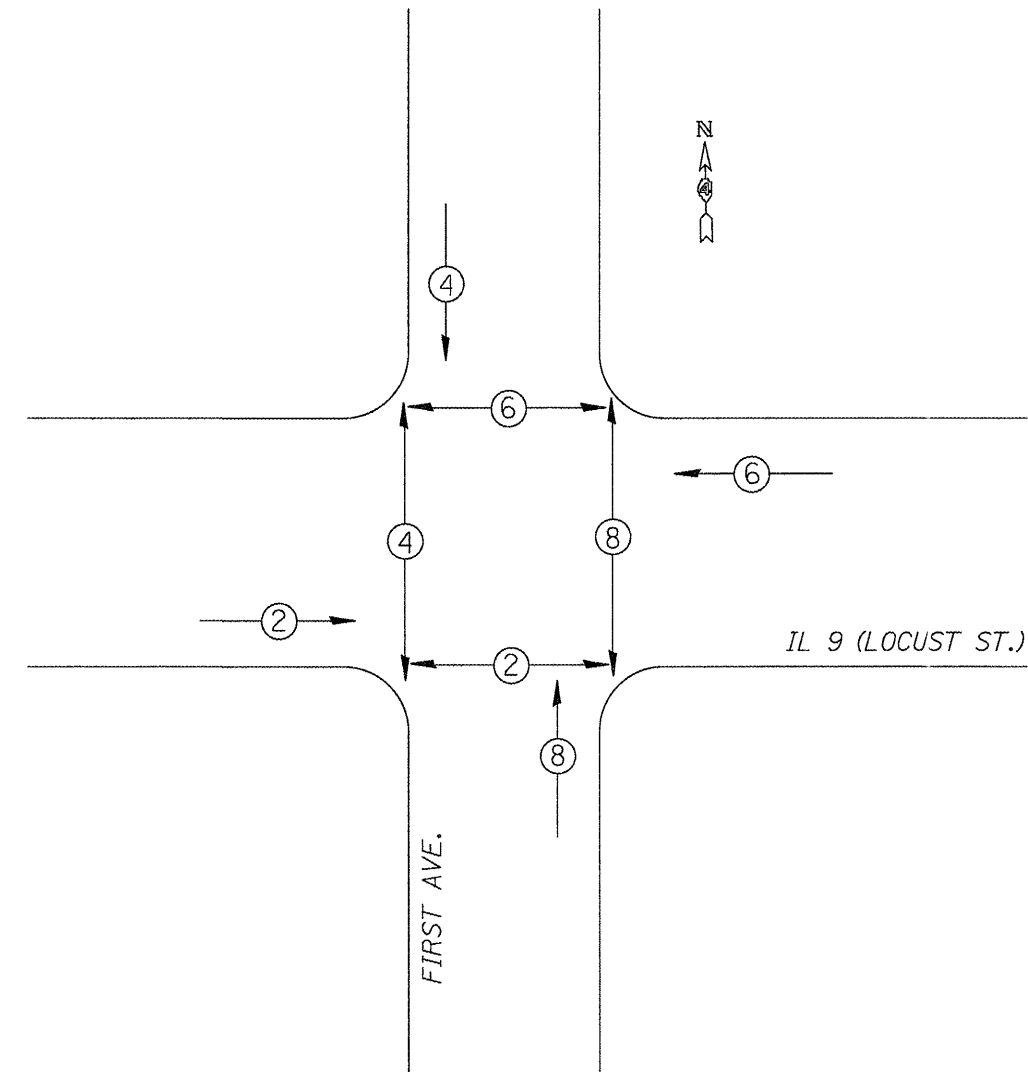


TEMPORARY CABLE DIAGRAM



TEMPORARY PHASE DIAGRAM

NAME OF INTERSECTION IL 9 (LOCUST) & FIRST
 EXISTING CONTROLLER: FULL ACTUATED CONTROLLER
 (TS-2), TYPE IV CABINET, TS-1 BACKPANEL



TRAFFIC SIGNALS LEGEND

- TEMP. CONTROLLER (SIGNAL)
- TEMP. 3 SEC. SIGNAL HEAD W/BACKPLATE
- TEMP. 3 SEC. SIGNAL HEAD
- TEMP. PEDESTRIAN SIGNAL HEAD
- TEMP. 5/C NO. 14 SIGNAL CABLE
- TEMP. VIDEO DETECTION CABLE
- TEMP. CABLE (1/C NO. 6) X 3
- TEMP. PEDESTRIAN PUSHBUTTON
- TEMP. SERVICE INSTALLATION
- TEMP. VIDEO DETECTION CAMERA

NOT TO SCALE
 TRAFFIC SIGNALS
 SHEET 17 OF 23

FILE NAME =	USER NAME = ..2193 Task 4..	DESIGNED -	REVISED -	STATE OF ILLINOIS DEPARTMENT OF TRANSPORTATION	IL 9 (LOCUST ST.) & FIRST AVE. TEMPORARY TRAFFIC SIGNAL CABLE PLAN AND PHASE DIAGRAM	F.A.J. RTE.	SECTION	COUNTY	TOTAL SHEETS	SHEET NO.	
P:\P-09\2193 - I00T DUR\Task-04\DWG\SH1	114a - IL 9 Canton Traffic Signals - Final	DRAWN -	REVISED -			685 (IL 9)	(41Z,135)R,N,(1CS)I	FULTON	125	77	
	PLOT SCALE = 1:20	CHECKED -	REVISED -			22 (IL 78)					
	PLOT DATE = 12/21/2010	DATE -	REVISED -			CONTRACT NO. 68877					
					SCALE:	SHEET NO. 77 OF 125 SHEETS	STA.	TO STA.	FED. ROAD DIST. NO. ILLINOIS FED. AID PROJECT		