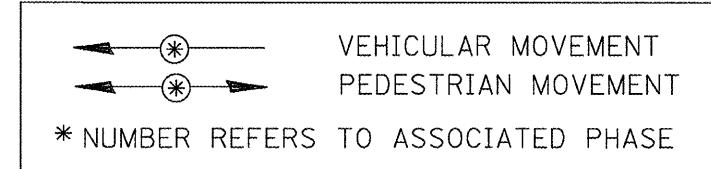
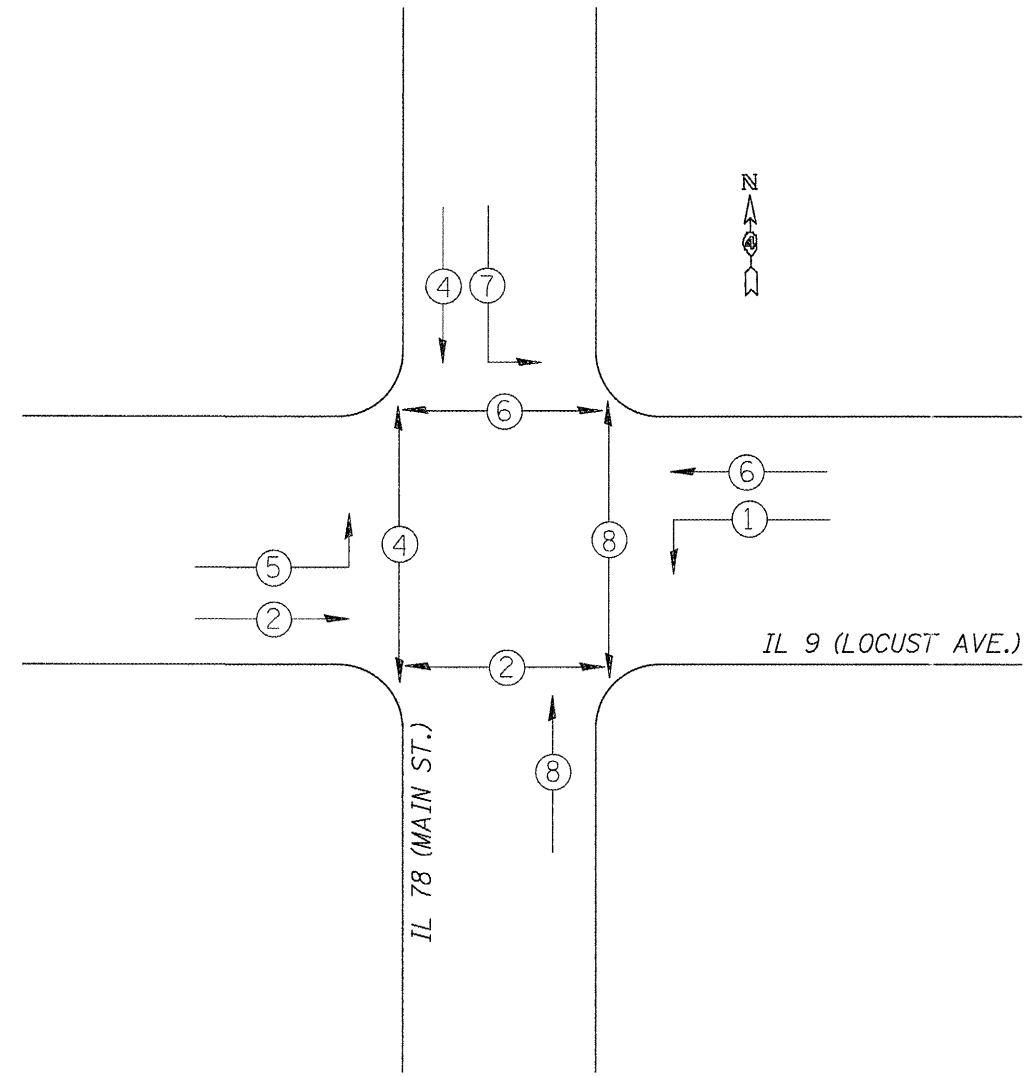
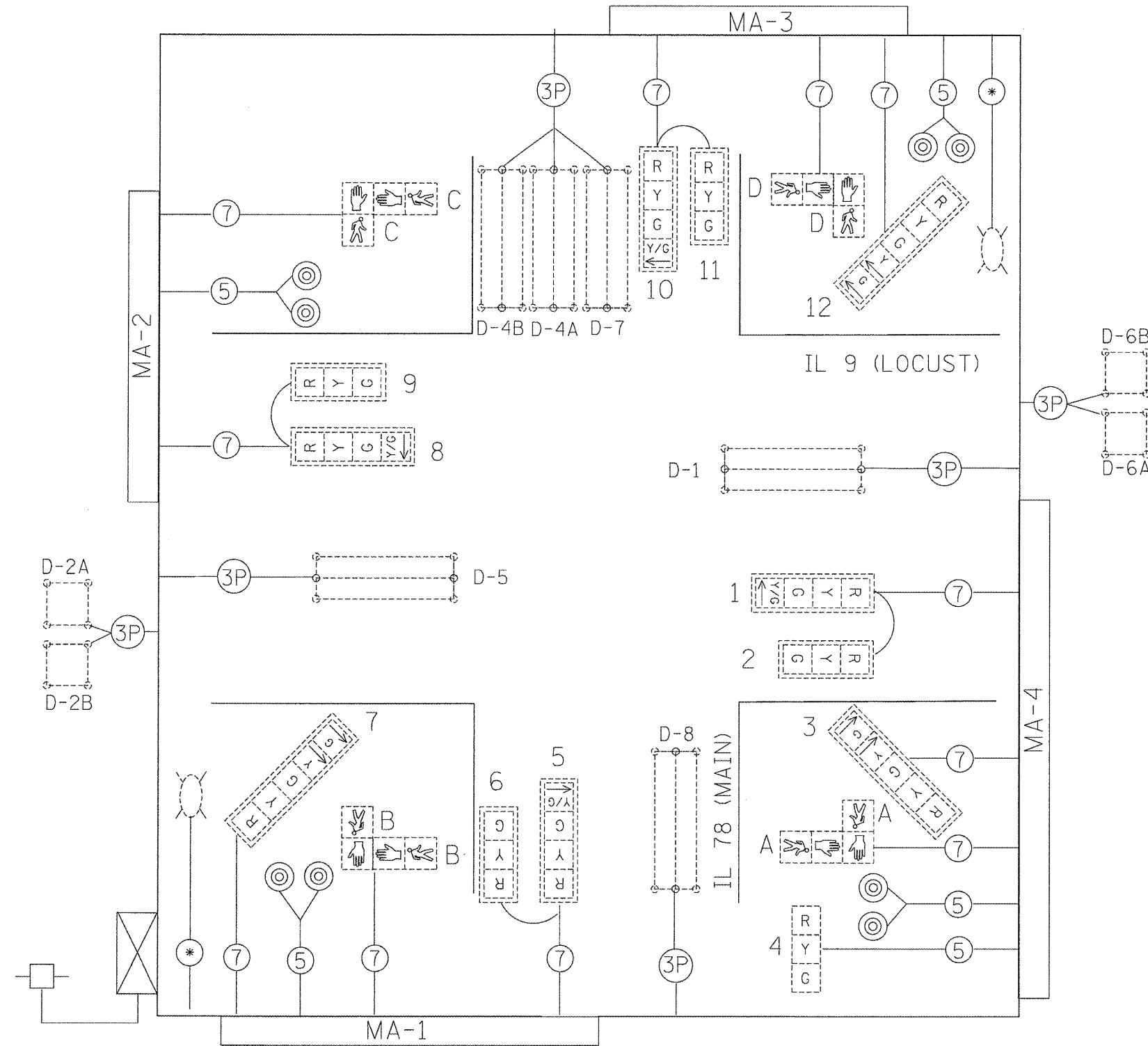


EXISTING CABLE DIAGRAM

EXISTING PHASE DIAGRAM

NAME OF INTERSECTION IL 9 (LOCUST) & IL 78 (MAIN)
 EXISTING CONTROLLER: FULL ACTUATED CONTROLLER
ECONOLITE ASC/2S-2100 (TS-2), TYPE IV CABINET
TS-2 BACKPANEL (16 POSITION), ASC/2M MASTER



TRAFFIC SIGNALS LEGEND

- | | | | | | |
|--|------------------------------------|--|------------------------------|--|---------------------------------|
| | EX. CONTROLLER (SIGNAL) | | *18 3-PR DETECTOR LOOP CABLE | | EX. DETECTOR LOOP (6'X6') |
| | EX. 3 SEC. SIGNAL HEAD W/BACKPLATE | | 5/C NO. 14 SIGNAL CABLE | | EX. DETECTOR LOOP (6'X50' QUAD) |
| | EX. 3 SEC. SIGNAL HEAD | | 7/C NO. 14 SIGNAL CABLE | | EX. SERVICE INSTALLATION |
| | EX. PEDESTRIAN SIGNAL HEAD | | EX. PEDESTRIAN PUSHBUTTON | | EX. LUMINAIRE |

NOT TO SCALE
 TRAFFIC SIGNALS
 SHEET 8 OF 23

FILE NAME =	USER NAME = .2193 Task 4.	DESIGNED -	REVISED -	STATE OF ILLINOIS DEPARTMENT OF TRANSPORTATION	IL 9 (LOCUST ST.) & IL 78 (MAIN ST.) EXISTING TRAFFIC SIGNAL CABLE PLAN AND PHASE DIAGRAM	F.A.U. RTE.	SECTION	COUNTY	TOTAL SHEETS	SHEET NO.
P:\P-29\2193 - IDOT DUR\Task-04\DWG\SH1	14a - IL 9 Canton Traffic Signals - Final	DRAWN -	REVISED -			685 (IL 9)	(41Z,135)R,N,(1CS)1	FULTON	125	68
	PLOT SCALE = 1:20	CHECKED -	REVISED -			22 (IL 78)				
	PLOT DATE = 12/21/2010	DATE -	REVISED -			FED. ROAD DIST. NO.	ILLINOIS FED. AID PROJECT			