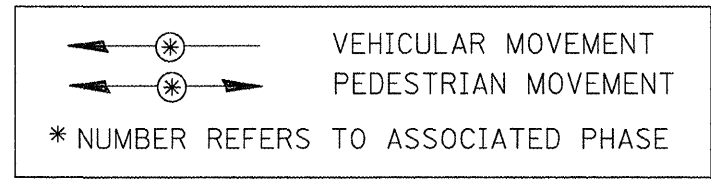
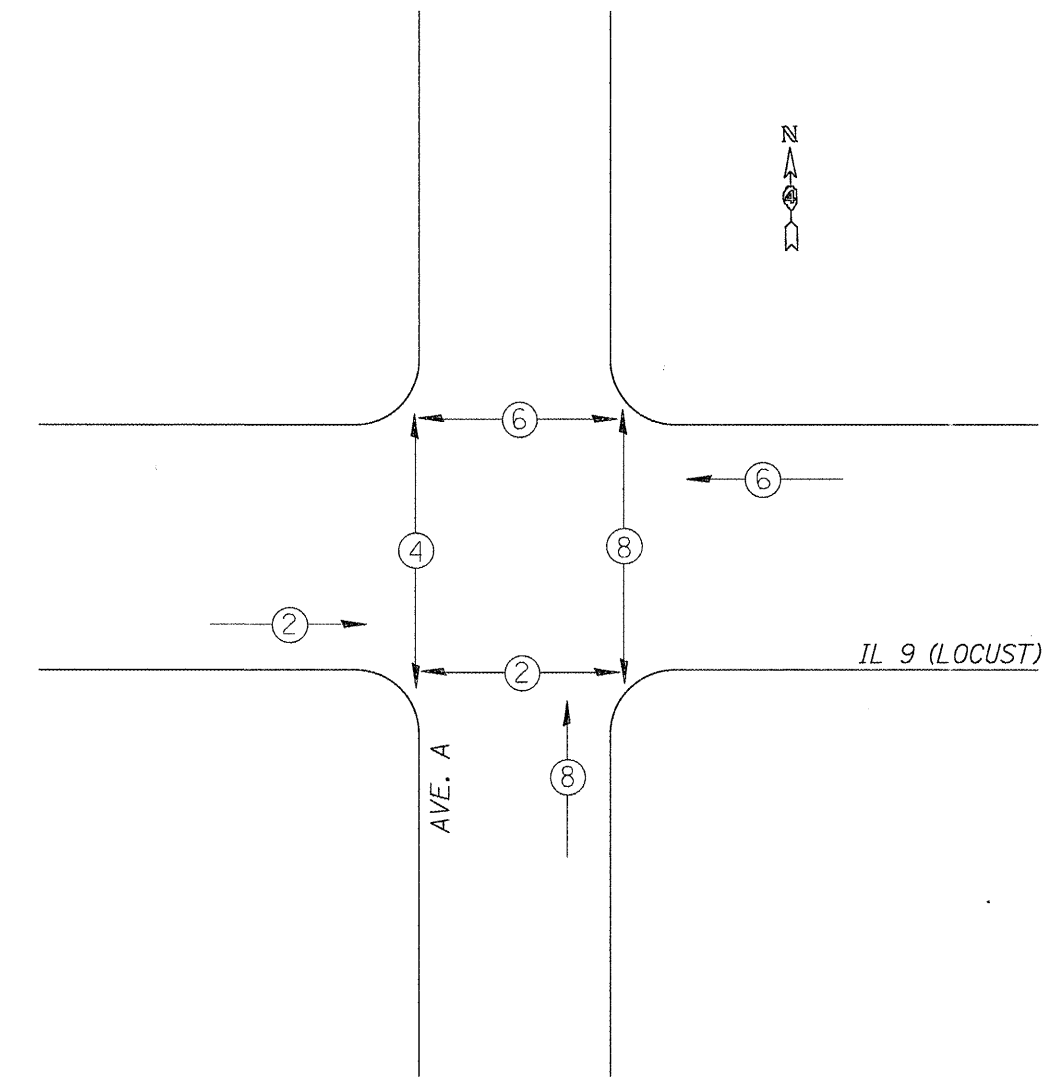
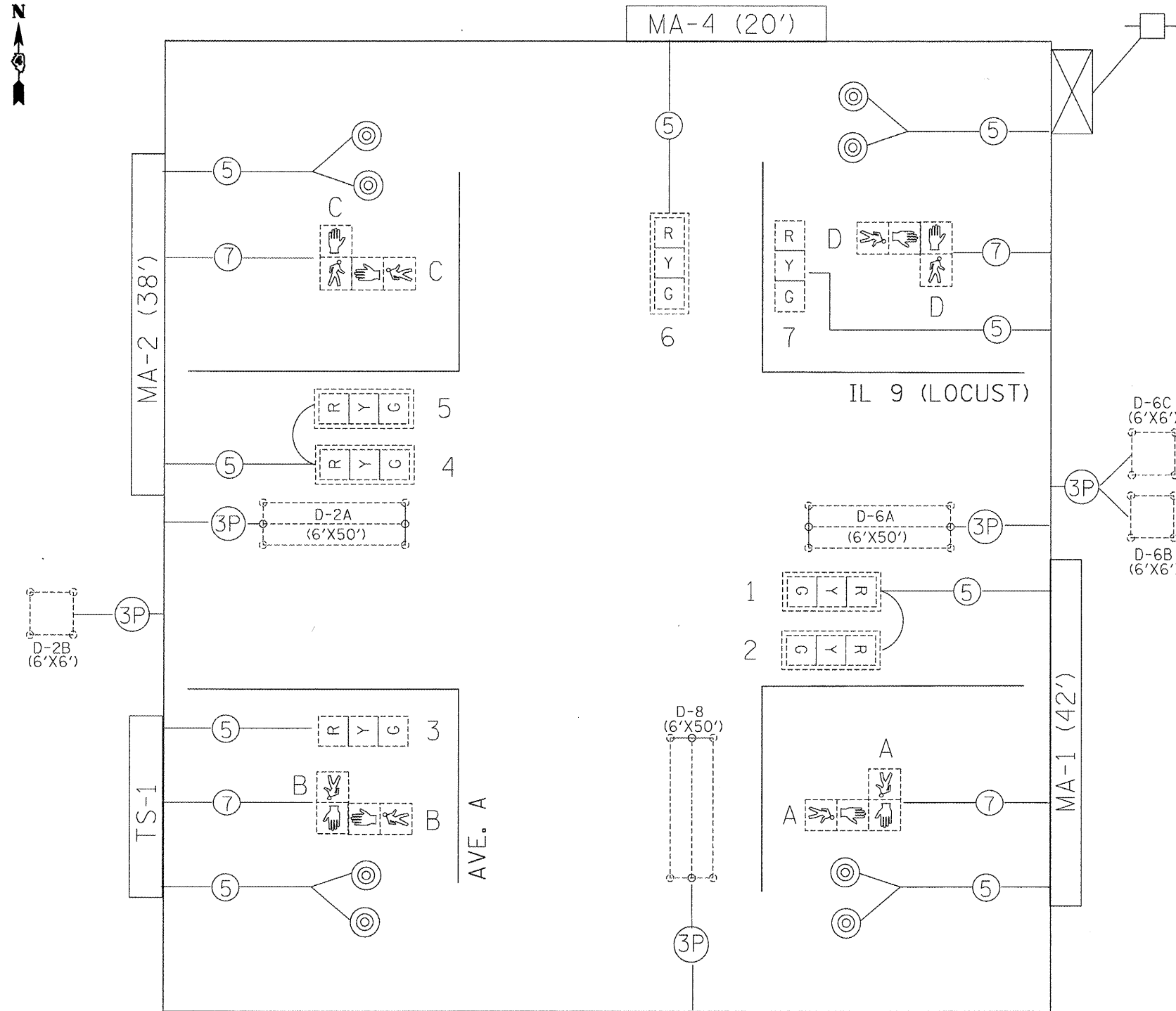


EXISTING CABLE DIAGRAM

EXISTING PHASE DIAGRAM

NAME OF INTERSECTION IL 9 (LOCUST) & AVE. A
 EXISTING CONTROLLER: FULL ACTUATED CONTROLLER
ECONOLITE ASC/2S-2100 (TS-2), TYPE IV CABINET
TS-1 BACKPANEL



TRAFFIC SIGNALS LEGEND

- EX. CONTROLLER (SIGNAL)
- #18 3-PR DETECTOR LOOP CABLE
- EX. DETECTOR LOOP (6'X6')
- 5/C NO. 14 SIGNAL CABLE
- EX. DETECTOR LOOP (6'X50' QUAD)
- EX. 3 SEC. SIGNAL HEAD W/BACKPLATE
- 7/C NO. 14 SIGNAL CABLE
- EX. DETECTOR LOOP (6'X50' QUAD)
- EX. 3 SEC. SIGNAL HEAD
- EX. SERVICE INSTALLATION

NOT TO SCALE
 TRAFFIC SIGNALS
 SHEET 3 OF 23

FILE NAME = P:\NP-09\2193 - IDOT DUR\Task-04\DWG\SH	USER NAME = _2193 Task 4_	DESIGNED -	REVISED -	STATE OF ILLINOIS DEPARTMENT OF TRANSPORTATION	IL 9 (LOCUST ST.) & AVE. A EXISTING TRAFFIC SIGNAL CABLE PLAN AND PHASE DIAGRAM	F.A.U. RTE. 685 (IL 9)	SECTION (41Z,135)R,N(1CS)I	COUNTY FULTON	TOTAL SHEETS 125	SHEET NO. 63
		CHECKED -	REVISED -		SCALE: SHEET NO. 63 OF 125 SHEETS STA. TO STA.	22 (IL 78)				
	PLOT DATE = 12/21/2010	DATE -	REVISED -			FED. ROAD DIST. NO.	ILLINOIS	FED. AID PROJECT		