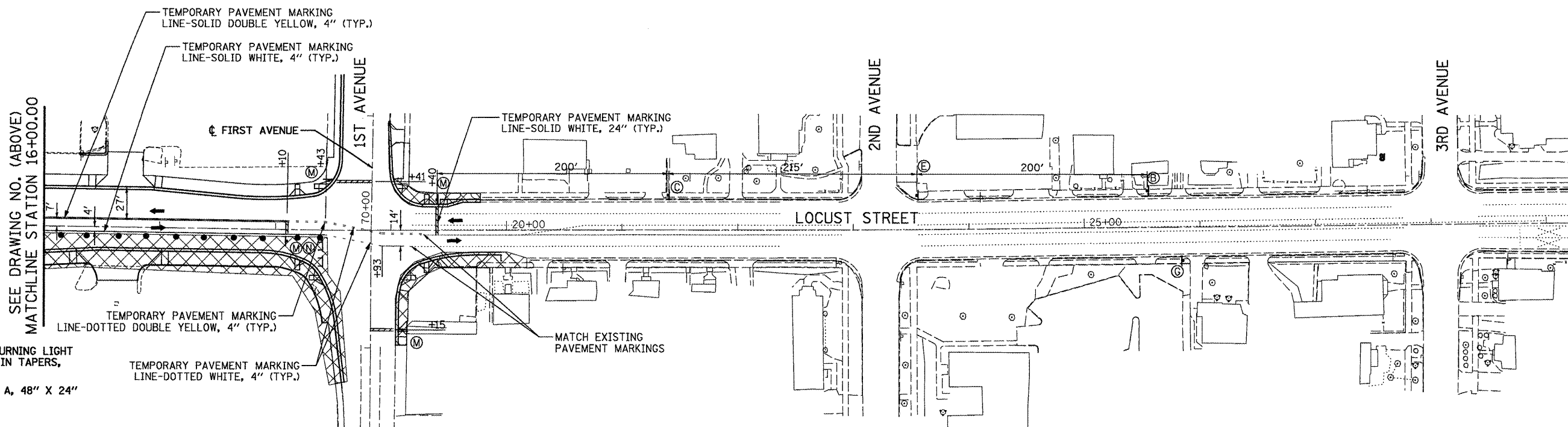
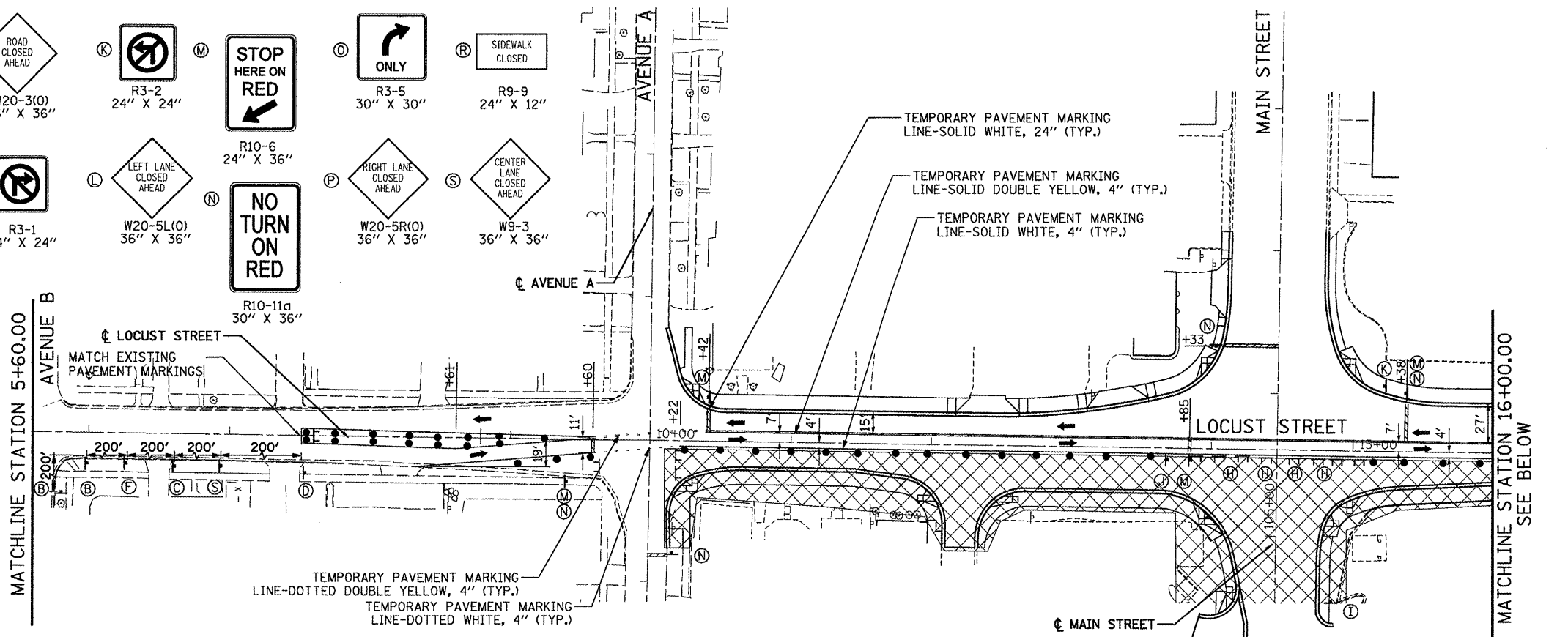


SIGN LEGEND:

A R3-7R 30" X 30"	E W1-3R 30" X 30"	I W20-3(O) 36" X 36"	K R3-2 24" X 24"	M R10-6 24" X 36"	O R3-5 30" X 30"	R R9-9 24" X 12"
B W20-1103 36" X 36"	F W1-3L 30" X 30"	J R3-1 24" X 24"	L W20-5L(O) 36" X 36"	N R10-11a 30" X 36"	P W20-5R(O) 36" X 36"	S W9-3 36" X 36"
C W21-1110 36" X 36"	G G20-2 36" X 18"					
D W6-3-1 30" X 30"	H R11-2 48" X 30"					

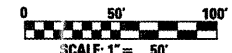


LEGEND

- DRUM WITH STEADY BURNING LIGHT
@ 25' C-C, 20' C-C IN TAPERS,
CURVES, AND RADII
- ARROW BOARD, TYPE A, 48" X 24"
- TYPE III BARRICADE
- CONSTRUCTION SIGN
- TRAFFIC FLOW ARROW
- TEMPORARY PAVEMENT
(HOT-MIX ASPHALT, 1 1/2" OVER
8" SUB-BASE GRANULAR MATERIAL, TYPE A)
- WORK ZONE

NOTE: ALL MOT TAPERS ARE 1:1 UNLESS NOTED OTHERWISE

MOT SPEED = 35 MPH



FILE NAME = P:\P-09\2193 - IDOT DUR\Task-04\DWG\SH\09a_04-9480909-MOT04.dgn	USER NAME = .2193 Task 4.	DESIGNED LC	REVISED -
PLOT SCALE = 1:50	CHECKED JRS	DATE 12/21/2010	REVISED -

INFRASTRUCTURE ENGINEERING
456 Fulton Street | Suite 104 | Peoria, IL 61602
P 309.637.8000 | F 309.637.8101 | www.infrastructure-eng.com

STATE OF ILLINOIS DEPARTMENT OF TRANSPORTATION

MAINTENANCE OF TRAFFIC
LOCUST STREET-RECONSTRUCTION STAGE 2
SCALE: 1"=50'-00" SHEET NO. 06 OF 06 SHEETS STA. 5+60.00 TO STA. 29+20.00

F.A.P. RTE. 685/22	SECTION (41Z, 135) R, N, (IC5) I	COUNTY FULTON	TOTAL SHEETS 125	SHEET NO. 38
CONTRACT NO. 68877			ILLINOIS FED. AID PROJECT 04-94-009-09	