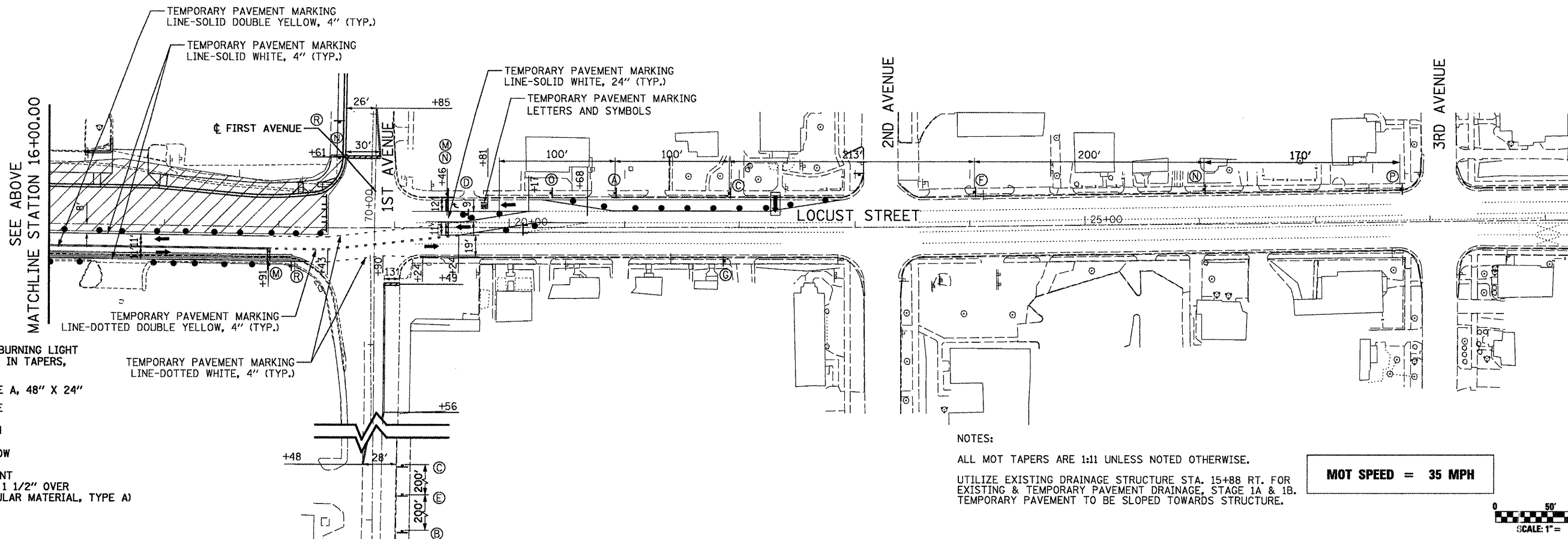
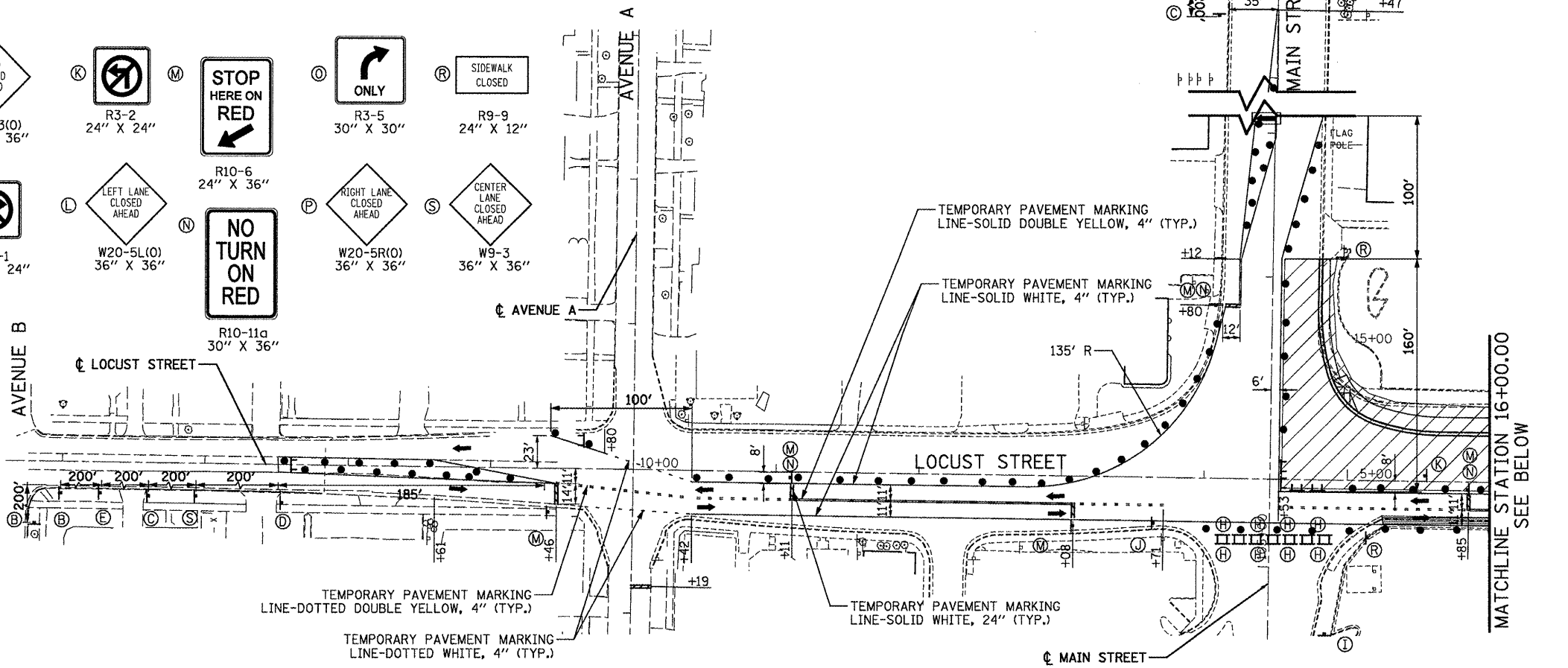


SIGN LEGEND:

A R3-7R 30" X 30"	E W1-3R 30" X 30"	I W20-3(O) 36" X 36"	K R3-2 24" X 24"	M R10-6 24" X 36"	O R3-5 30" X 30"	R R9-9 24" X 12"
B W20-1103 36" X 36"	F W1-3L 30" X 30"	J R3-1 24" X 24"	L W20-5L(O) 36" X 36"	N R10-11a 30" X 36"	P W20-5R(O) 36" X 36"	S W9-3 36" X 36"
C W21-110 36" X 36"	G G20-2 36" X 18"					
D W6-3-1 30" X 30"	H R11-2 48" X 30"					



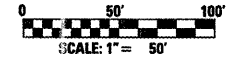
LEGEND

- DRUM WITH STEADY BURNING LIGHT @ 25' C-C, 20' C-C IN TAPERS, CURVES, AND RADII
- ➔ ARROW BOARD, TYPE A, 48" X 24"
- ⊥ TYPE III BARRICADE
- ⊥ CONSTRUCTION SIGN
- ➔ TRAFFIC FLOW ARROW
- ▨ TEMPORARY PAVEMENT (HOT-MIX ASPHALT, 1 1/2" OVER 8" SUB-BASE GRANULAR MATERIAL, TYPE A)
- ▨ WORK ZONE

NOTES:

ALL MOT TAPERS ARE 1:11 UNLESS NOTED OTHERWISE.
 UTILIZE EXISTING DRAINAGE STRUCTURE STA. 15+88 RT. FOR EXISTING & TEMPORARY PAVEMENT DRAINAGE, STAGE 1A & 1B. TEMPORARY PAVEMENT TO BE SLOPED TOWARDS STRUCTURE.

MOT SPEED = 35 MPH



FILE NAME = P:\P-09\2193 - 1DOT DUR\Task-04\DWG\SHIT\09a_04-9480909-MDT02.dgn	USER NAME = .2193 Task 4.	DESIGNED LC	REVISED -	<p>INFRASTRUCTURE ENGINEERING 456 Fulton Street Suite 104 Peoria, IL 61602 P: 309.692.3000 F: 309.692.4000 www.infrastructureeng.com</p>	<p align="center">STATE OF ILLINOIS DEPARTMENT OF TRANSPORTATION</p>	<p>MAINTENANCE OF TRAFFIC LOCUST STREET-RECONSTRUCTION STAGE 1A</p>		F.A.P. RTE. 885/22	SECTION (41Z, 135) R, N ₂ (1CS) I	COUNTY FULTON	TOTAL SHEETS 125	SHEET NO. 36
PLOT SCALE = 1:500	CHECKED JRS	REVISED -	SCALE: 1"=50'-00"			SHEET NO. 04 OF 06 SHEETS	STA. 5+60.00 TO STA. 29+20.00	CONTRACT NO. 68877				
PLOT DATE = 12/21/2010	DATE 12/21/2010	REVISED -				ILLINOIS FED. AID PROJECT D4-94-009-09						