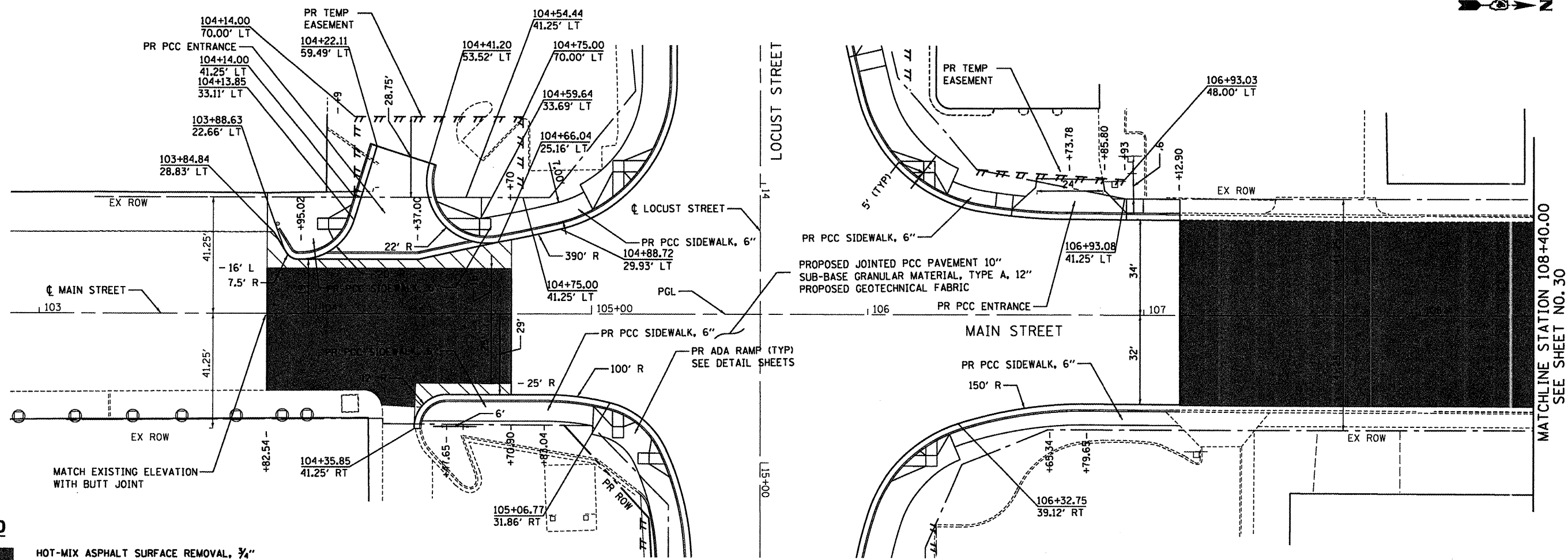


PLAN	SURVEYED	DATE
	ALIGNED	
	CHECKED	
	BY	
	NO. OF WAY CHECKED	
	NO.	
	PAID FILE NAME	

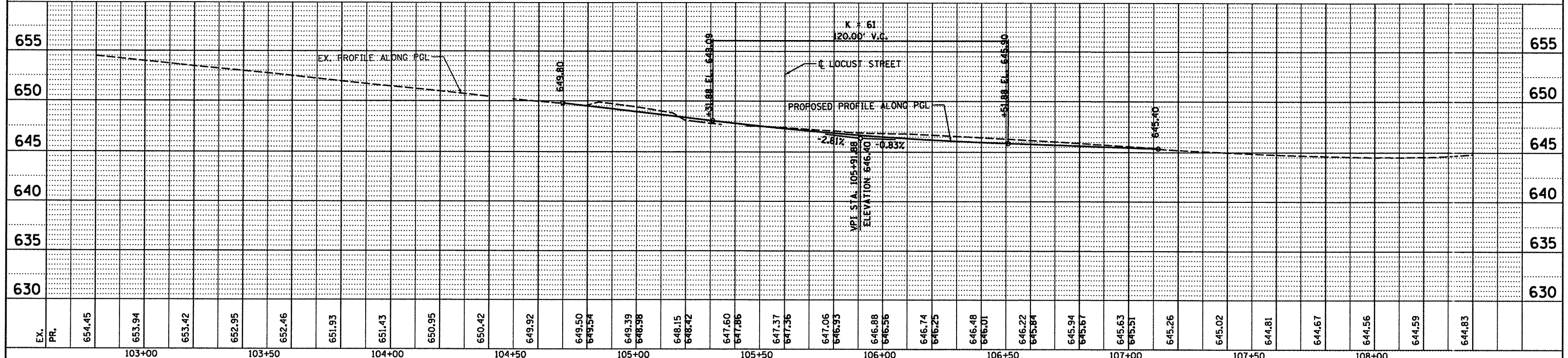
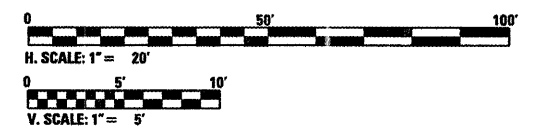
PROFILE	SURVEYED	DATE
	GRADES CHECKED	
	B.M. NOTED	
	STRUCTURE NOTATIONS CHKD	
	NO.	



LEGEND

- HOT-MIX ASPHALT SURFACE REMOVAL, 3/4"
- PROPOSED HOT-MIX ASPHALT SURFACE COURSE, MIX "D", N50, 1- 1/2"
- PROPOSED HOT-MIX ASPHALT SURFACE COURSE, MIX "D", N50, 1- 1/2"
- PROPOSED POLYMERIZED HOT-MIX ASPHALT BINDER COURSE, IL-19.0, N50 1- 1/2"
- PROPOSED PORTLAND CEMENT CONCRETE BASE COURSE 8"
- PROPOSED STABILIZED SUB-BASE 4"
- PROPOSED GEOTECHNICAL FABRIC FOR GROUND STABILIZATION

NOTE: SEE SHEET 26 FOR LOCUST STREET PLAN



EX. PR.	654.45	653.94	653.42	652.95	652.46	651.93	651.43	650.95	650.42	649.92	649.50	649.54	649.39	648.98	648.15	648.42	647.60	647.86	647.37	647.36	647.06	646.93	646.88	646.56	646.74	646.25	646.48	646.01	646.22	645.84	645.94	645.67	645.63	645.51	645.26	645.02	644.81	644.67	644.56	644.59	644.83		
	103+00		103+50		104+00		104+50		105+00		105+50		106+00		106+50		107+00		107+50		108+00																						

FILE NAME =	USER NAME =	DESIGNED RP	REVISED
P:\NP-09\2193 - IDOT DUR\Task-04\DWG\SHV\B_D4-9488983-plan04.dgn	_2193 Task 4_	SV	-
PLOT SCALE = 1:20	CHECKED JRS	REVISED	-
PLOT DATE = 12/21/2010	DATE 12/21/2010	REVISED	-

INFRASTRUCTURE ENGINEERING
 454 Fulton Street | Suite 104 | Peoria, IL 61602
 P 301.671.9261 | F 301.671.9255 | www.infrastructure-eng.com

STATE OF ILLINOIS DEPARTMENT OF TRANSPORTATION

PLAN AND PROFILE MAIN STREET

SCALE: H. 1" = 20' V. 1" = 5'

SHEET NO. 04 OF 07 SHEETS STA. 103+00.00 TO STA. 108+40.00

F.A.P. RTE. 585/22	SECTION (41Z, 135) R, N ₂ (ICS) I	COUNTY FULTON	TOTAL SHEETS 125	SHEET NO. 29
CONTRACT NO. 68877			ILLINOIS FED. AID PROJECT D4-94-009-09	