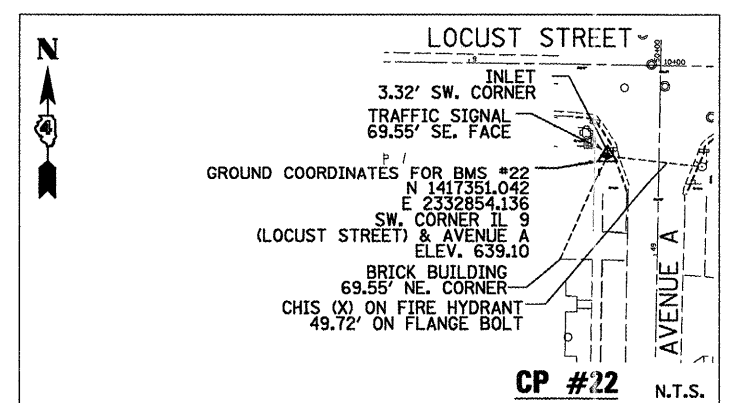
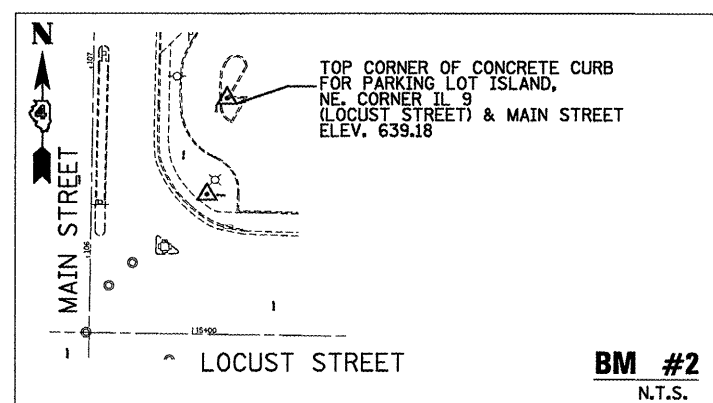
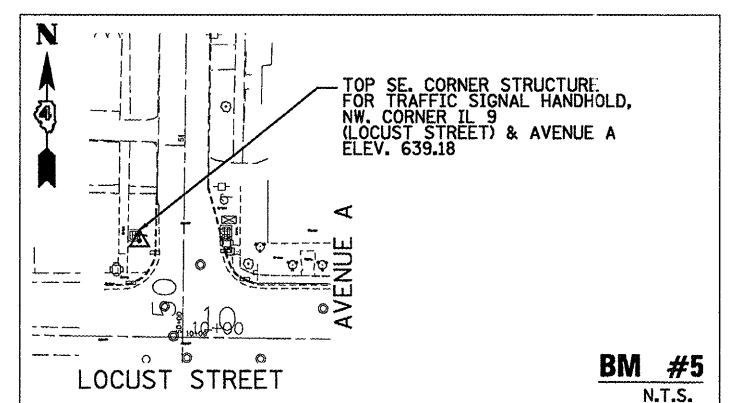
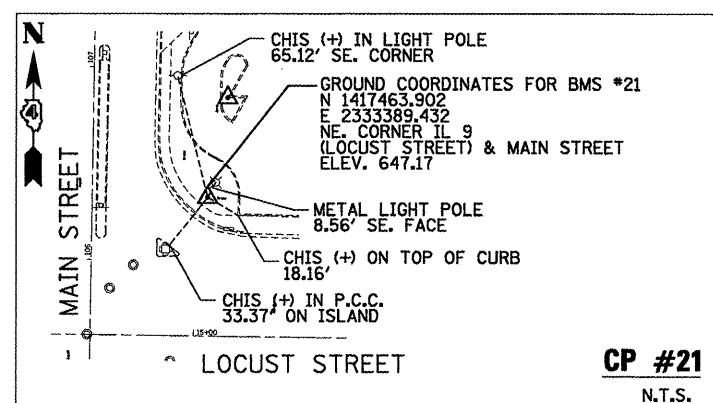
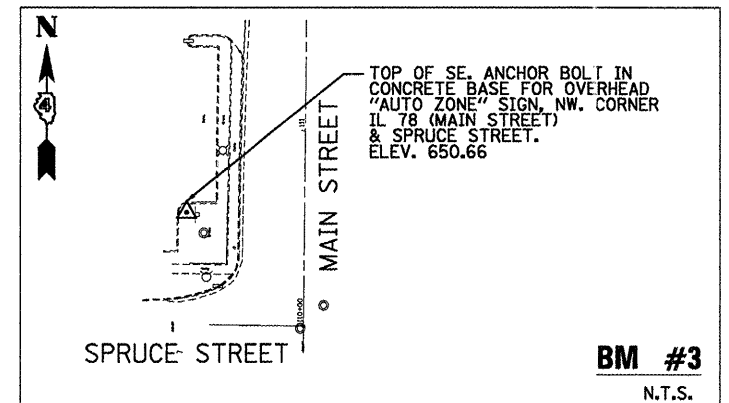


MAIN STREET ALIGNMENT

POT STA. 99+20.51 N 1416752.136 E 2333318.928	POT STA. 102+20.51 N 1417052.103 E 2333323.359
POT STA. 105+61.55 N 1417393.110 E 2333328.396	POT STA. 109+60.23 N 1417791.744 E 2333334.285
POT STA. 110+00.00 N 1417831.512 E 2333334.872	POT STA. 115+00.00 N 1418331.488 E 2333339.785



FILE NAME = P:\P-09\2193 - 100T DUR\Task-04\DWG\SH\06_D4-9428909-ATB01.dgn	USER NAME = _2193 Task 4_	DESIGNED NEC	REVISED -		STATE OF ILLINOIS DEPARTMENT OF TRANSPORTATION	ALIGNMENT, TIES AND BENCHMARKS LOCUST STREET-RECONSTRUCTION	F.A.P. RTE. 685/22	SECTION (41Z, 135) R, N, (1CS) I	COUNTY FULTON	TOTAL SHEETS 125	SHEET NO. 21		
PLLOT SCALE = 1:100	CHECKED JRS	REVISED -	SCALE: 1"=100'-00"				SHEET NO. 01 OF 02 SHEETS		STA. 5+60.00 TO STA. 17+00.00		CONTRACT NO. 68877		
PLLOT DATE = 12/21/2010	DATE 12/21/2010	REVISED -							ILLINOIS FED. AID PROJECT		D4-94-009-09		