

RTE.	SECTION	COUNTY	TOTAL SHEETS	SHEET NO.
FAI 55	D3 PATCHING 2012-2	GRUNDY	13	1
		ILLINOIS	CONTRACT NO. 66B37	

INDEX OF SHEETS

1. COVER SHEET
2. GENERAL NOTES
3. SUMMARY OF QUANTITIES
4. TYPICAL SECTIONS
- 5 - 9. SCHEDULES
10. TRAFFIC CONTROL AND PROTECTION, STANDARD 701400 (SPECIAL) DETAILS
11. CLASS A PATCHING DETAILS WITHOUT HMA OVERLAY
12. CLASS B PATCHING DETAILS WITHOUT HMA OVERLAY
13. TYPICAL PAVEMENT MARKING

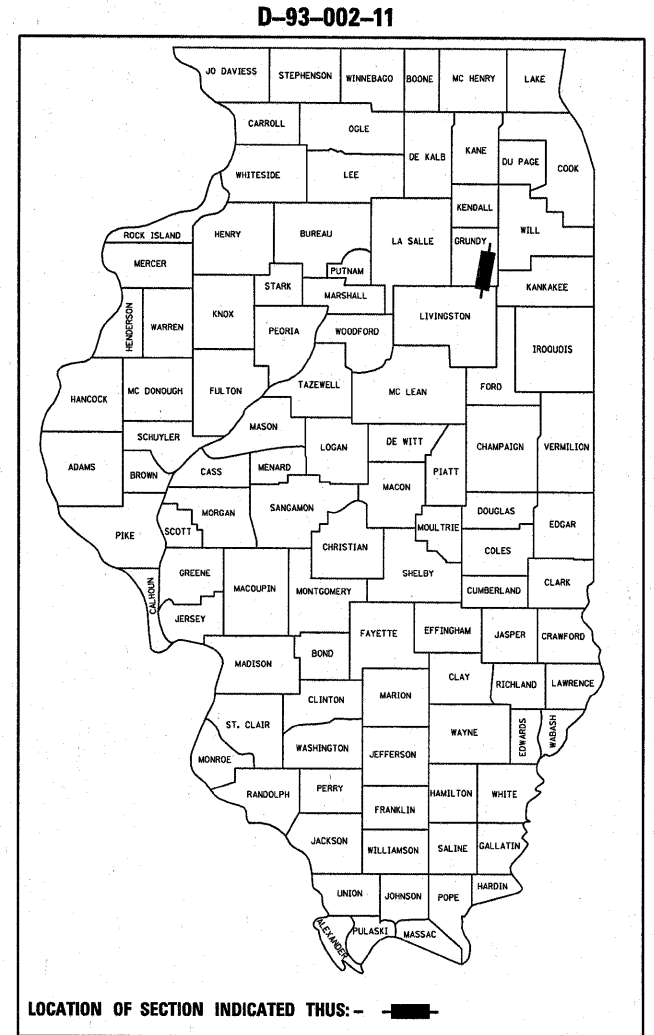
STANDARDS

- | | |
|-----------|---|
| 000001-06 | STANDARD SYMBOLS, ABBREVIATIONS AND PATTERNS |
| 001001-02 | AREAS OF REINFORCEMENT BARS |
| 001006 | DECIMAL OF AN INCH AND OF A FOOT |
| 420001-07 | PAVEMENT JOINTS |
| 420101-04 | 24' (7.2 m) JOINTED PCC PAVEMENT |
| 421001-02 | BAR REINFORCEMENT FOR CRC PAVEMENT |
| 701001-02 | OFF-ROAD OPERATIONS 2L, 2W, MORE THAN 15' (4.5 m) AWAY |
| 701006-03 | OFF-ROAD OPERATIONS 2L, 2W, 15' (4.5 m) TO 24" (600 mm) FROM PAVEMENT EDGE |
| 701101-02 | OFF-ROAD OPERATIONS MULTILANE, 15' (4.5 m) TO 24" (600 mm) FROM PAVEMENT EDGE |
| 701106-02 | OFF-ROAD OPERATIONS, MULTILANE, MORE THAN 15' (4.5 m) AWAY |
| 701401-06 | LANE CLOSURE, FREEWAY/EXPRESSWAY |
| 701411-07 | LANE CLOSURE, MULTILANE, AT ENTRANCE OR EXIT RAMP FOR SPEEDS ≥ 45 MPH |
| 701426-04 | LANE CLOSURE, MULTILANE INTERMITTENT OR MOVING OPERATION, FOR SPEEDS ≥ 45 MPH |
| 701901-01 | TRAFFIC CONTROL DEVICES |

STATE OF ILLINOIS
DEPARTMENT OF TRANSPORTATION
DIVISION OF HIGHWAYS
**PROPOSED
HIGHWAY PLANS**

FAI ROUTE 55 (I-55)
SECTION D3 PATCHING 2012-2

PAVEMENT PATCHING
GRUNDY COUNTY
C-93-109-11



FUNCTIONAL CLASSIFICATION
RURAL - INTERSTATE
FAI 55 (I-55)
2009 ADT 21700
P.V 72.12% M.U23.5% S.U. 4.38%

STATE OF ILLINOIS
DEPARTMENT OF TRANSPORTATION
DIVISION OF HIGHWAYS

SUBMITTED May 4 20 11
Eric S. Theodorsson
DEPUTY DIRECTOR OF HIGHWAYS, REGION ENGINEER

May 13 20 11
Scott E. Stitt, P.E.
Acting ENGINEER OF DESIGN AND ENVIRONMENT

May 13 20 11
Christine M. Fooda
DIRECTOR OF HIGHWAYS, CHIEF ENGINEER

PROJECT END
FAS RTE. 292 (GARDNER RD.)
(M.P. 226.82)

PROJECT BEGIN
LIVINGSTON COUNTY LINE
(M.P. 218.07)



J.U.L.I.E.
JOINT UTILITY LOCATION INFORMATION FOR EXCAVATION
1-800-892-0123
OR 811

PROJECT ENGINEER: JOE KANNEL, P.E.
PROJECT MANAGER: PAT BRABOY
TOWNSHIP: GOODFARM, GARFIELD
CONTRACT NO. 66B37

GROSS LENGTH = 46200 FT. = 8.75 MILE

**PRINTED BY THE AUTHORITY
OF THE STATE OF ILLINOIS**

GENERAL NOTES

PLAN DIMENSIONS AND DETAILS RELATIVE TO EXISTING ROADWAY OR STRUCTURE HAVE BEEN TAKEN FROM EXISTING PLANS AND ARE SUBJECT TO NOMINAL CONSTRUCTION VARIATIONS. IT SHALL BE THE CONTRACTOR'S RESPONSIBILITY TO VERIFY SUCH DIMENSIONS AND DETAILS IN THE FIELD AND TO MAKE NECESSARY APPROVED ADJUSTMENTS PRIOR TO CONSTRUCTION OR ORDERING OF MATERIALS. SUCH VARIATIONS SHALL NOT BE CAUSE FOR ADDITIONAL COMPENSATION FOR A CHANGE IN THE SCOPE OF THE WORK, HOWEVER, THE CONTRACTOR WILL BE PAID FOR THE QUANTITY ACTUALLY FURNISHED AT THE UNIT BID FOR THE WORK.

FOR STABILIZATION, ALL TYPE III BARRICADES SHALL REQUIRE A MINIMUM OF FOUR SAND BAGS PER BARRICADE.

THE CONTRACTOR SHALL CONTACT JULIE AT LEAST 48 HOURS PRIOR TO EXCAVATION TO DETERMINE WHICH UTILITIES ARE IN THE AREA.

ABANDONED UNDERGROUND UTILITIES THAT CONFLICT WITH CONSTRUCTION SHALL BE DISPOSED OF OUTSIDE THE LIMITS OF THE RIGHT OF WAY ACCORDING TO ARTICLE 202.03 OF THE STANDARD SPECIFICATIONS AND AS DIRECTED BY THE ENGINEER. THIS WORK WILL NOT BE PAID FOR SEPARATELY BUT SHALL BE INCLUDED IN THE COST OF CLASS A PATCHING.

ANY REFERENCE TO A STANDARD IN THESE PLANS SHALL BE INTERPRETED TO MEAN THE EDITION AS INDICATED BY THE SUBNUMBER LISTED ON THE INDEX OF SHEETS OR THE COPY OF THE STANDARD INCLUDED IN THESE PLANS.

EXISTING REINFORCEMENT BARS EXTENDING INTO REMOVAL AREA SHALL BE CLEANED, STRAIGHTENED AND INCORPORATED INTO THE NEW CONSTRUCTION. ANY REINFORCEMENT BARS THAT ARE DAMAGED DURING CONCRETE REMOVAL SHALL BE REPLACED WITH AN APPROVED BAR SPLICER OR ANCHORAGE SYSTEM. COST INCLUDED WITH CONCRETE REMOVAL.

DATE: 4-4-11

PREPARED BY: *Don Brown*
DISTRICT STUDIES & PLANS ENGINEER

EXAMINED BY: *Richard D. [Signature]*
DISTRICT CONSTRUCTION ENGINEER

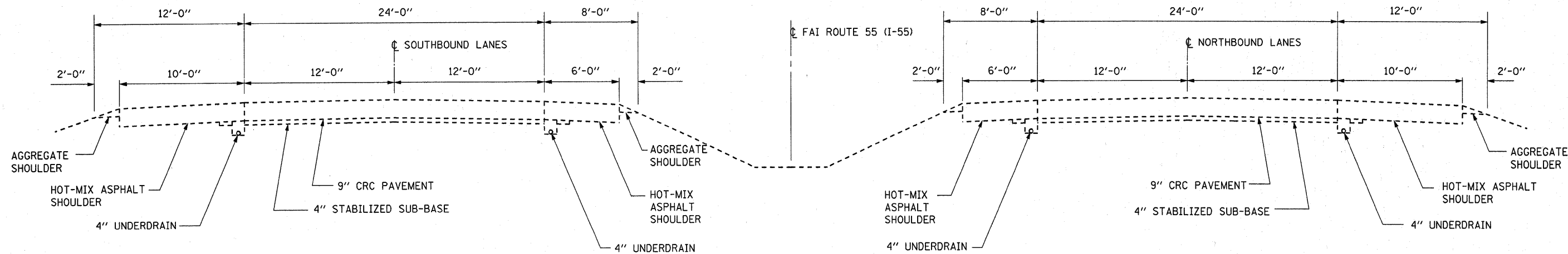
Wayne Phillip
DISTRICT MATERIALS ENGINEER

Bruce C. Heber 4/4/11
DISTRICT OPERATIONS ENGINEER

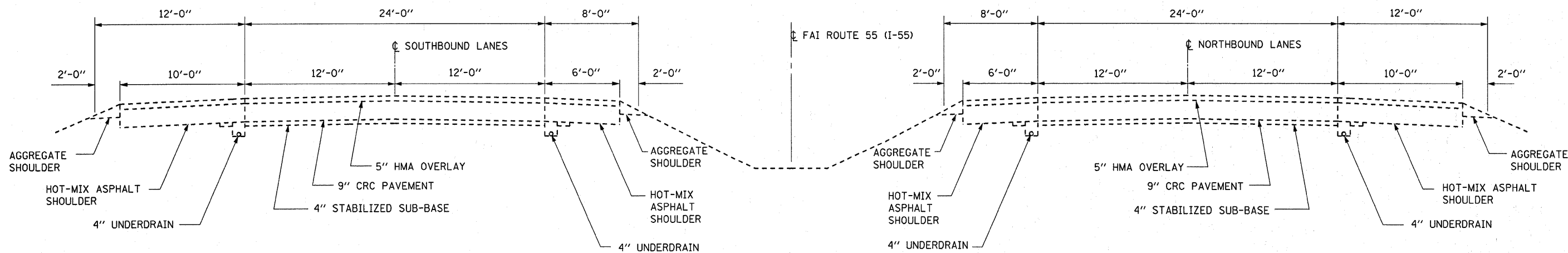
FILE NAME =	USER NAME = braboypc	DESIGNED - RON WOODSHANK	REVISED -	STATE OF ILLINOIS DEPARTMENT OF TRANSPORTATION	GENERAL NOTES	RTE.	SECTION	COUNTY	TOTAL SHEETS	SHEET NO.
c:\pw_work\pwsdot\braboypc\d0264631\0366837-shd-details.dgn	DRAWN - RON WOODSHANK	REVISED -	FAI 55			D3 PATCHING 2012-2	GRUNDY	13	2	
PLOT SCALE = 50,0000' / IN.	CHECKED -	REVISED -	CONTRACT NO. 66B37							
PLOT DATE = Apr 04, 2011 - 09:02:44 AM	DATE -	REVISED -	SCALE: _____			SHEET NO. 1 OF 1 SHEETS	STA. _____ TO STA. _____	ILLINOIS		

SUMMARY OF QUANTITIES			
CONSTRUCTION CODE TYPE:			
			0005 RURAL 100% STATE
CODE NO.	ITEM	UNIT	TOTAL QUANTITY
44200541	CLASS A PATCHES, TYPE II, 9 INCH	SO YD	292
44200545	CLASS A PATCHES, TYPE III, 9 INCH	SO YD	80
44200547	CLASS A PATCHES, TYPE IV, 9 INCH	SO YD	25
44200620	CLASS A PATCHES, TYPE II, 14 INCH	SO YD	395
44200624	CLASS A PATCHES, TYPE III, 14 INCH	SO YD	48
44200628	CLASS A PATCHES, TYPE IV, 14 INCH	SO YD	25
44213000	PATCHING REINFORCEMENT	SO YD	866
44213100	PAVEMENT FABRIC	SO YD	468
44213200	SAW CUTS	FOOT	5426
67100100	MOBILIZATION	L SUM	1
70100420	TRAFFIC CONTROL AND PROTECTION, STANDARD 701411	EACH	16
70103815	TRAFFIC CONTROL SURVEILLANCE	CAL DA	25
* X7800610	URETHANE PAVEMENT MARKING - LINE 4"	FOOT	625
* X7800630	URETHANE PAVEMENT MARKING - LINE 6"	FOOT	125
X7010805	TRAFFIC CONTROL AND PROTECTION, STANDARD 701401 (SPECIAL)	L SUM	1

* SPECIALTY ITEM



**TYPICAL SECTION
MAINLINE**
M.M. 218.07 TO M.M. 221.10



**TYPICAL SECTION
MAINLINE**
M.M. 221.10 TO M.M. 226.82

FILE NAME =	USER NAME = braboype	DESIGNED - RON WOODSHANK	REVISED -
c:\pwork\pwsdot\braboype\d026463\0366837-sht-details.dgn		DRAWN - RON WOODSHANK	REVISED -
	PLOT SCALE = 50.0000' / IN.	CHECKED -	REVISED -
	PLOT DATE = Apr 04, 2011 - 09:02:28 AM	DATE -	REVISED -

STATE OF ILLINOIS
DEPARTMENT OF TRANSPORTATION

TYPICAL SECTION - FAI 55

SCALE: _____ SHEET NO. 1 OF 1 SHEETS STA. _____ TO STA. _____

RTE.	SECTION	COUNTY	TOTAL SHEETS	SHEET NO.
FAI 55	D3 PATCHING 2012-2	GRUNDY	13	4
ILLINOIS			CONTRACT NO. 66B37	

PATCHING SCHEDULE - NBL													
LOCATION BY LOG MILE	PASSING LANE					DRIVING LANE					REMARKS		
	9" CLASS A PATCHING			PATCH REINF. SQ YD	SAW CUTS FOOT	PAVT FABRIC SQ YD	9" CLASS A PATCHING			PATCH REINF. SQ YD		SAW CUTS FOOT	PAVT FABRIC SQ YD
TYPE II SQ YD	TYPE III SQ YD	TYPE IV SQ YD	TYPE II SQ YD				TYPE III SQ YD	TYPE IV SQ YD					
218.45							8				8	60	
218.48	11			11	64								
218.60							8				8	60	
218.71							13				13	68	
218.87							15				15	70	
218.88							15				15	70	
218.89							15				15	70	
218.90									25		25	86	
218.92								16			16	72	
218.94	8			8	60								
218.98							15				15	70	
219.00							15				15	70	
219.05							15				15	70	
219.06							15				15	70	
219.07							8				8	60	
219.38							8				8	60	
219.46							8				8	60	
219.47							8				8	60	
220.23							11				11	64	
220.35								16			16	72	
220.38								16			16	72	
220.39								16			16	72	
220.40								16			16	72	
220.87	8			8	60								
220.88							8				8	60	
TOTALS	27			27	184		183	80	25		288	1488	

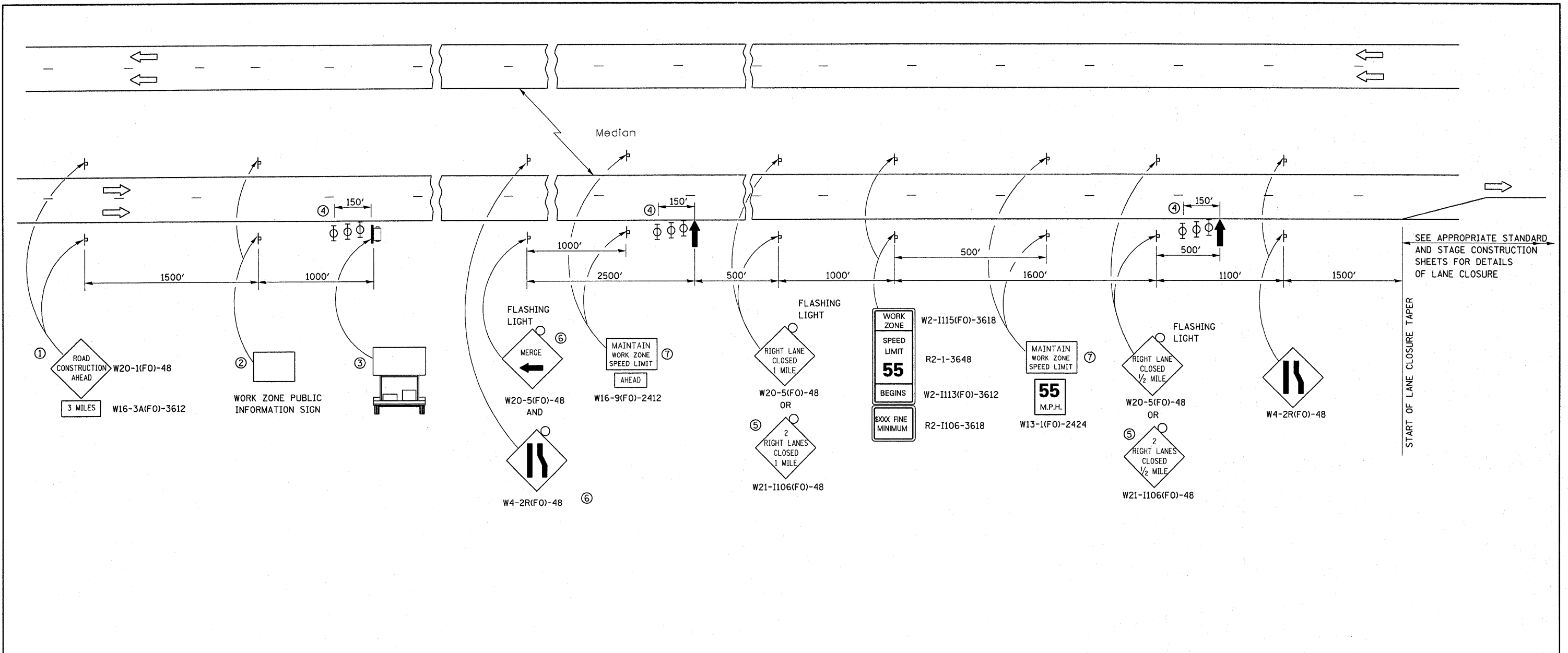
PATCHING SCHEDULE - NBL													
LOCATION BY MILE MARKER	PASSING LANE						DRIVING LANE						REMARKS
	14" CLASS A PATCHING						14" CLASS A PATCHING						
	TYPE II SQ YD	TYPE III SQ YD	TYPE IV SQ YD	PATCH REINF. SQ YD	SAW CUTS FOOT	PAVT FABRIC SQ YD	TYPE II SQ YD	TYPE III SQ YD	TYPE IV SQ YD	PATCH REINF. SQ YD	SAW CUTS FOOT	PAVT FABRIC SQ YD	
226.623	8			8	60	8	8			8	60	8	
227.231	8			8	60	8	8			8	60	8	
227.423							8			8	60	8	
227.467	8			8	60	8							
227.561							8			8	60	8	
227.704	8			8	60	8	8			8	60	8	
227.917							11			11	64	11	
228.263							13			13	68	13	
228.516	13			13	68	13							
228.576	8			8	60	8							
228.607	8			8	60	8							
229.007			25	25	86	25							
229.86	8			8	60	8	8			8	60	8	
230.131	8			8	60	8							
230.228	8			8	60	8	8			8	60	8	
230.47	8			8	60	8	8			8	60	8	
230.598	8			8	60	8							
231.191	8			8	60	8	8			8	60	8	
231.949								16		16	72	16	
231.959							11			11	64	11	
231.964							11			11	64	11	
231.97								16		16	72	16	
SUBTOTALS	109		25	135	874	135	117	32		149	944	149	

PATCHING SCHEDULE - SBL													
LOCATION BY MILE MARKER	PASSING LANE						DRIVING LANE						REMARKS
	14" CLASS A PATCHING			PATCH REINF. SQ YD	SAW CUTS FOOT	PAVT FABRIC SQ YD	14" CLASS A PATCHING			PATCH REINF. SQ YD	SAW CUTS FOOT	PAVT FABRIC SQ YD	
	TYPE II SQ YD	TYPE III SQ YD	TYPE IV SQ YD				TYPE II SQ YD	TYPE III SQ YD	TYPE IV SQ YD				
233.197	0	16		16	72	16	8	0	0	8	60	8	
229.58	0	0		0	0	0	8	0	0	8	60	8	
228.452	8	0		8	60	8	8	0	0	8	60	8	
226.99	8	0		8	60	8	8	0	0	8	60	8	
226.96	8	0		8	60	8	8	0	0	8	60	8	
226.7	8	0		8	60	8	8	0	0	8	60	8	
226.69	8	0		8	60	8	8	0	0	8	60	8	
226.68	8	0		8	60	8	8	0	0	8	60	8	
225.8	0	0		0	0	0	8	0	0	8	60	8	
225.7	8	0		8	60	8	8	0	0	8	60	8	
225.65	8	0		8	60	8	8	0	0	8	60	8	
225.2	0	0		0	0	0	8	0	0	8	60	8	
224.7	8	0		8	60	8	0	0	0	0	0	0	
224.55	8	0		8	60	8	0	0	0	0	0	0	
224.5	0	0		0	0	0	8	0	0	8	60	8	
224.2	8	0		8	60	8	8	0	0	8	60	8	
224	0	0		0	0	0	8	0	0	8	60	8	
223.9	0	0		0	0	0	8	0	0	8	60	8	
223.8	8	0		8	60	8	0	0	0	0	0	0	
223.5	8	0		8	60	8	0	0	0	0	0	0	
223.3	0	0		0	0	0	8	0	0	8	60	8	
222.4	8	0		8	60	8	0	0	0	0	0	0	
222.2	0	0		0	0	0	8	0	0	8	60	8	
221.7	8	0		8	60	8	0	0	0	0	0	0	
SUBTOTALS	120	16	0	136	972	136	144	0	0	144	1080	144	

PATCHING SCHEDULE - SBL													
LOCATION BY MILE MARKER	PASSING LANE						DRIVING LANE						REMARKS
	9" CLASS A PATCHING			PATCH REINF. SQ YD	SAW CUTS FOOT	PAVT FABRIC SQ YD	9" CLASS A PATCHING			PATCH REINF. SQ YD	SAW CUTS FOOT	PAVT FABRIC SQ YD	
	TYPE II SQ YD	TYPE III SQ YD	TYPE IV SQ YD				TYPE II SQ YD	TYPE III SQ YD	TYPE IV SQ YD				
221.2	0	0		0	0	0	8	0	0	8	60		
220.6	0	0		0	0	0	8	0	0	8	60		
220.2	8	0		8	60		0	0	0	0	0		
220	8	0		8	60		0	0		0	0		
219.7	8	0		8	60		0	0		0	0		
219.4	0	0		0	0		8	0		8	60		
219.35	0	0		0	0		8	0		8	60		
219.3	0	0		0	0		8	0		8	60		
219.25	0	0		0	0		0	16		16	72		
219.2	0	0		0	0		8	0		8	60		
219.07	11	0		11	64		0	0		0	0		
219.04	0	0		0	0		8	0		8	60		
219.01	0	0		0	0		8	0		8	60		
SUBTOTALS	35	0	0	35	244	0	64	16	0	80	552	0	

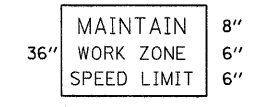
PAVEMENT MARKING SCHEDULE - NBL				
LOCATION MILE POST	URETHANE PAVEMENT MARKING TYPE 1, LINE 4"		URETHANE PAVEMENT MARKING TYPE 1, LINE 6"	REMARKS
	YELLOW	WHITE	WHITE	
218.45				
218.48	8			
218.60		6	2	
218.71		10	3	
218.87		11	3	
218.88		11	3	
218.89		11	3	
218.90		19	5	
218.92		12	3	
218.94	6			
218.98		11	3	
219.00		11	3	
219.05		11	3	
219.06		11	3	
219.07		6	2	
219.38		6	2	
219.46		6	2	
219.47		6	2	
220.23		8	2	
220.35		12	3	
220.38		12	3	
220.39		12	3	
220.40		12	3	
220.87	6			
220.88		6	2	
226.623	6	6	2	
227.231	6	6	2	
227.423		6	2	
227.467	6			
227.561		6	2	
227.704	6	6	2	
227.917		8	2	
228.263		10	3	
228.516	10			
228.576	6			
228.607	6			
229.007	19			
229.86	6	6	2	
230.131	6			
230.228	6	6	2	
230.47	6	6	2	
230.598	6			
231.191	6	6	2	
231.949		12	3	
231.959		8	2	
231.964		8	2	
231.97		12	3	
NB SUBTOTALS	121	322		
TOTALS		443	91	

PAVEMENT MARKING SCHEDULE - SBL				
LOCATION MILE POST	URETHANE PAVEMENT MARKING TYPE 1, LINE 4"		URETHANE PAVEMENT MARKING TYPE 1, LINE 6"	REMARKS
	YELLOW	WHITE	WHITE	
233.197				
229.58		6	2	
228.452	6	6	2	
225.8		6	2	
225.7	6	6	2	
225.65	6	6	2	
225.2		6	2	
224.7	6			
224.55	6			
224.5		6	2	
224.2	6	6	2	
224		6	2	
223.9		6	2	
223.8	6			
222.4	6			
222.2		6	2	
221.7	6			
221.2		6	2	
220.6		6	2	
220.2	6			
220	6			
219.7	6			
219.4		6	2	
219.2		6	2	
219.07	8			
219.04		6	2	
219.01		6	2	
SB SUBTOTALS	80	102	34	
TOTALS		182	34	



- ① THE ROAD CONSTRUCTION AHEAD SIGN SHALL BE LOCATED 3 MILES IN ADVANCE OF THE PROJECT LIMITS.
- ② THE MESSAGE AND SIZE OF THE WORK ZONE PUBLIC INFORMATION SIGN SHALL BE AS SPECIFIED BY THE DEPARTMENT.
- ③ TO BE PLACED IN THE MEDIAN WHEN FEASIBLE. THE MESSAGE BOARD SHALL BE USED TO DISPLAY STATUS OF LANES WITHIN THE PROJECT. THE PRIMARY MESSAGES SHALL BE:
"RIGHT LANE CLOSED" / " x MILES AHEAD"
"LEFT LANE CLOSED" / " x MILES AHEAD"
"ALL LANES OPEN"
- ④ THREE, TYPE II BARRICADES, DRUMS, OR VERTICAL BARRICADES AT 50' CENTERS.
- ⑤ THIS SIGN SHALL BE USED WHEN 2 LANES ARE CLOSED.
- ⑥ WHEN THE LEFT LANE IS CLOSED, SWITCH THESE TWO SIGNS AND THE DIRECTION OF THE MERGE ARROW.

⑦ 48"x36" FLUORESCENT ORANGE SIGN WITH BLACK LETTERS.
48"



- ↑ ARROW BOARD
- ☐ PORTABLE CHANGEABLE MESSAGE SIGN
- ⊥ SIGN
- ⊕ TYPE II BARRICADE, DRUM, OR VERTICAL BARRICADE WITH MONODIRECTIONAL FLASHING LIGHT

GENERAL NOTE:

THIS STANDARD IS USED WHERE AT ANY TIME A LANE IS CLOSED ON A FREEWAY/EXPRESSWAY.

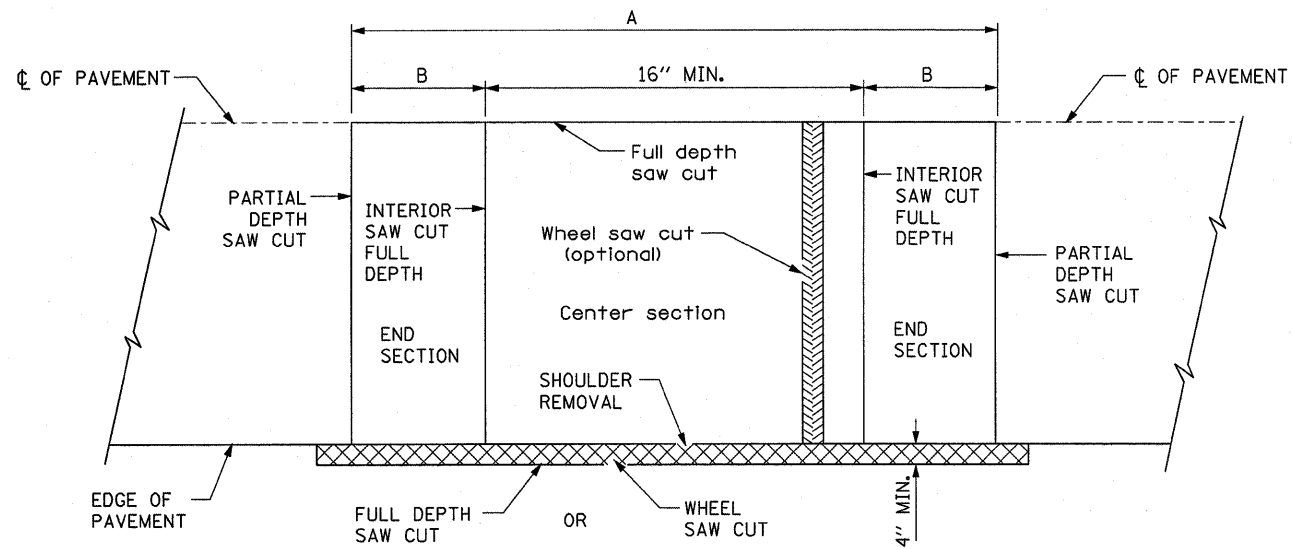
WHEN THE LEFT LANE IS CLOSED, LEFT LANE CLOSED SIGNS SHALL BE SUBSTITUTED FOR THE RIGHT LANE CLOSED SIGNS.

THE FIRST TWO SIGNS AND THE MESSAGE BOARD ARE STATIONARY. THE OTHER SIGNS AND ARROWBOARDS SHALL BE MOVED AS NECESSARY TO MAINTAIN THE REQUIRED DISTANCE FROM THE START OF THE LANE CLOSURE TAPER(S).

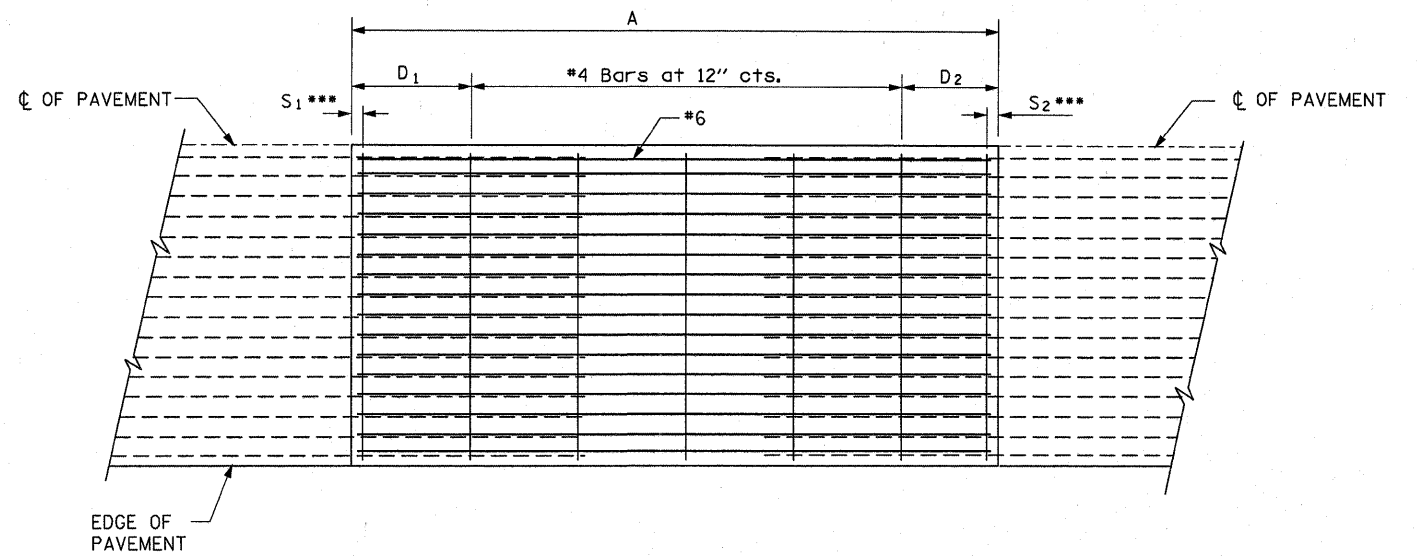
SEE SPECIAL PROVISIONS.

ALL DIMENSIONS ARE IN INCHES UNLESS OTHERWISE SHOWN.

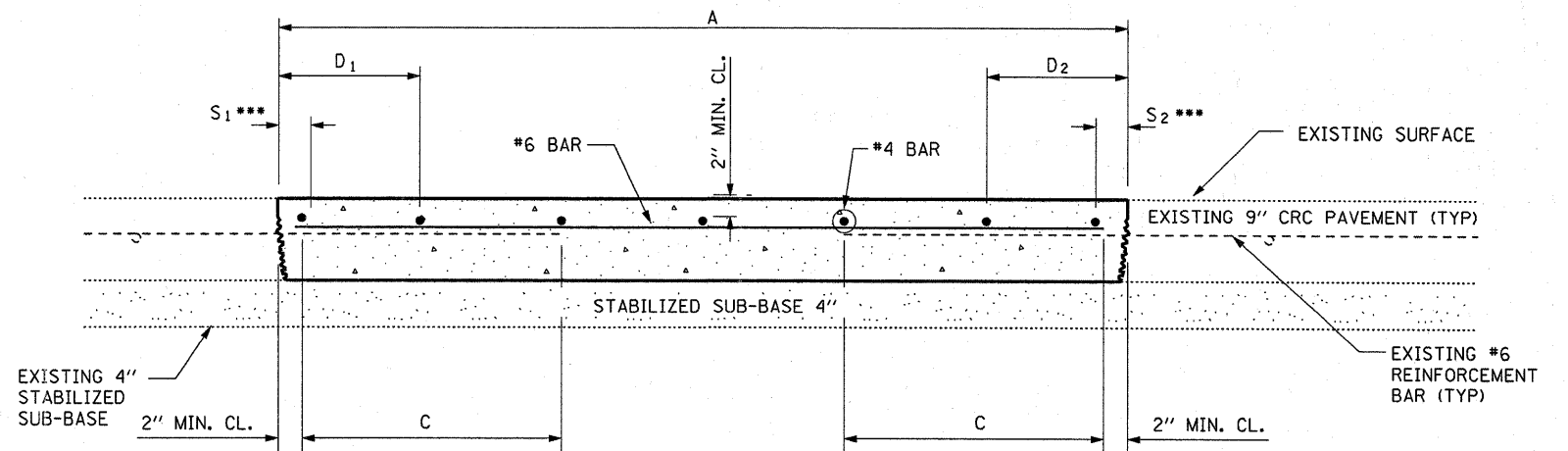
FILE NAME =	USER NAME = braboygo	DESIGNED - RON WOODSHANK	REVISED -	STATE OF ILLINOIS DEPARTMENT OF TRANSPORTATION	TRAFFIC CONTROL AND PROTECTION STANDARD 701400 (SPECIAL) DETAILS	RTE.	SECTION	COUNTY	TOTAL SHEETS	SHEET NO.
ci:\pw_work\p\dot\braboygo\d0264631\036837-sht-details.dgn	DRAWN - RON WOODSHANK	REVISED -	FAI 55			D3 PATCHING 2012-2	GRUNDY	13	10	
PLOT SCALE = 50.0000' / IN.	CHECKED -	REVISED -	CONTRACT NO. 66B37							
PLOT DATE = Apr 04, 2011 - 09:01:39 AM	DATE -	REVISED -	ILLINOIS							
					SCALE:	SHEET NO. 1 OF 1 SHEETS		STA. _____ TO STA. _____		



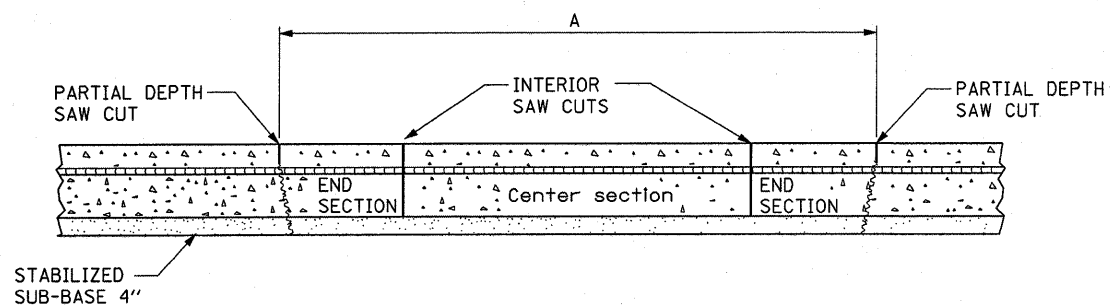
EXISTING PAVEMENT SAWING DETAIL
(AGAINST BITUMINOUS SHOULDER)



PROPOSED PAVEMENT DETAIL
(AGAINST CONCRETE SHOULDER)



PROPOSED CLASS A PATCHING DETAIL



REMOVAL DETAIL

EXISTING LONGITUDINAL REINFORCEMENT BARS	A (min.)	B (min.)	C (min.)
No. 6	6'-0"	21"	19"

NOTES:

- EVERY 3rd INTERSECTION MUST BE TIED
- LAP NEW REINFORCEMENT WITH EXISTING LONGITUDINAL REINFORCEMENT
- VARIABLES: WHERE S_1 AND S_2 ARE 2 1/2" MIN. AND 12" MAX. $D_1 = 2(S_1)$ AND $D_2 = 2(S_2)$

FILE NAME =
c:\pwork\pwork\braboygo\d0264631\036

USER NAME = braboygo
B37-shr-details.dgn

DESIGNED - RON WOODSHANK
DRAWN - RON WOODSHANK

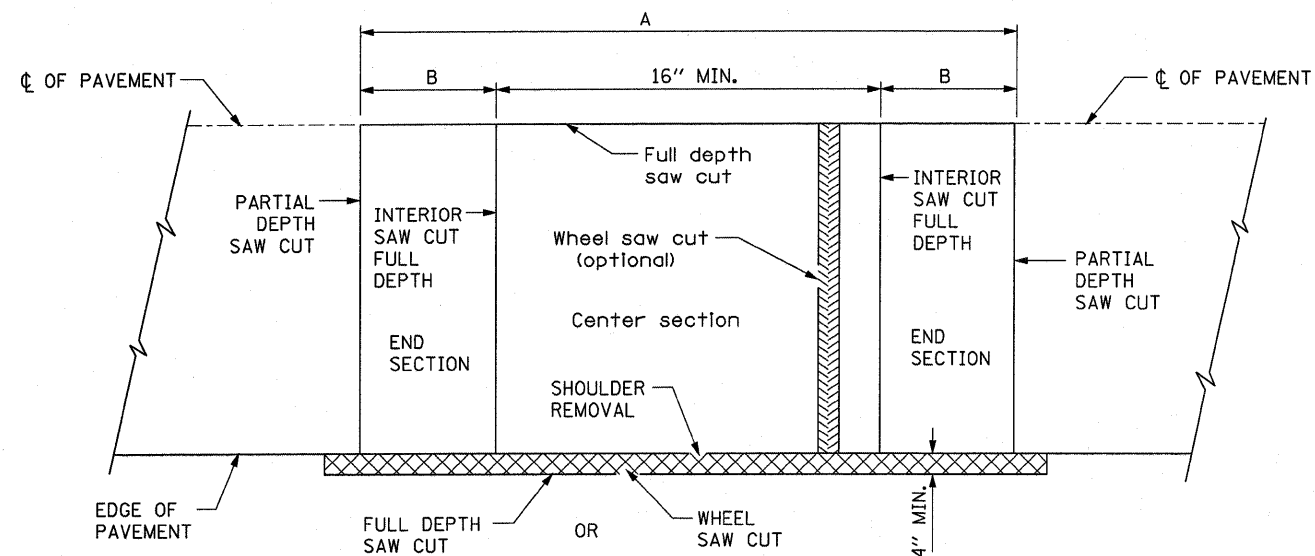
REVISED -
REVISED -
REVISED -

STATE OF ILLINOIS
DEPARTMENT OF TRANSPORTATION

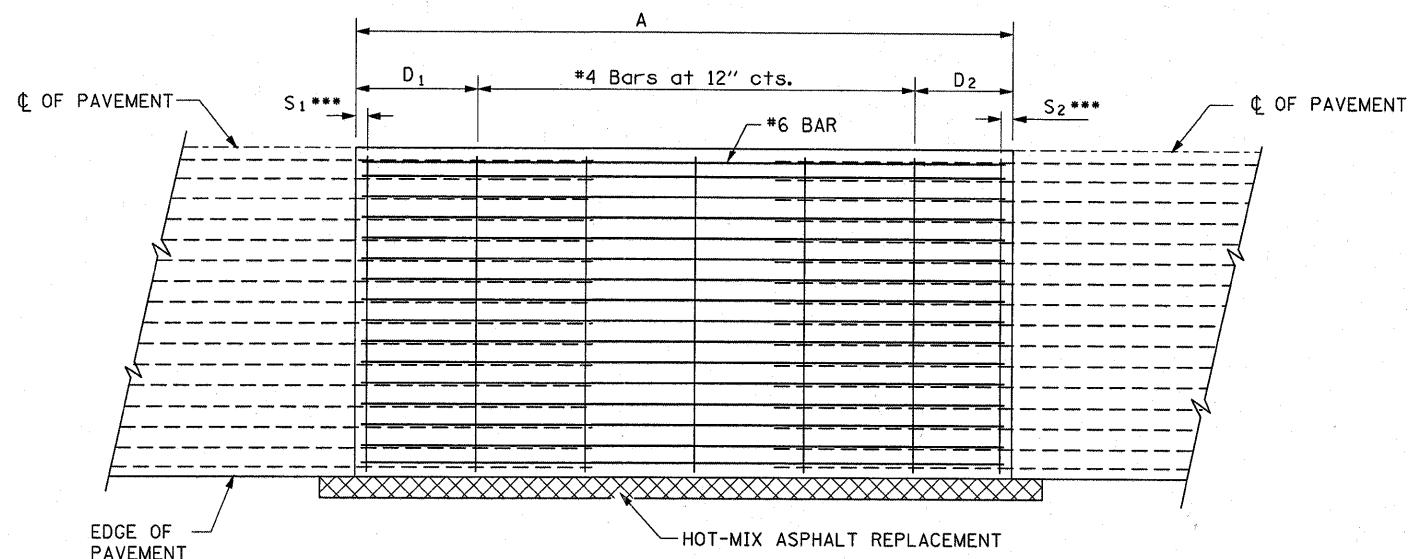
CLASS A PATCHING DETAILS
WITHOUT HMA OVERLAY

RTE.	SECTION	COUNTY	TOTAL SHEETS	SHEET NO.
FAI 55	D3 PATCHING 2012-2	GRUNDY	13	11
			CONTRACT NO. 66B37	
ILLINOIS				

SCALE: SHEET NO. 1 OF 1 SHEETS STA. TO STA.

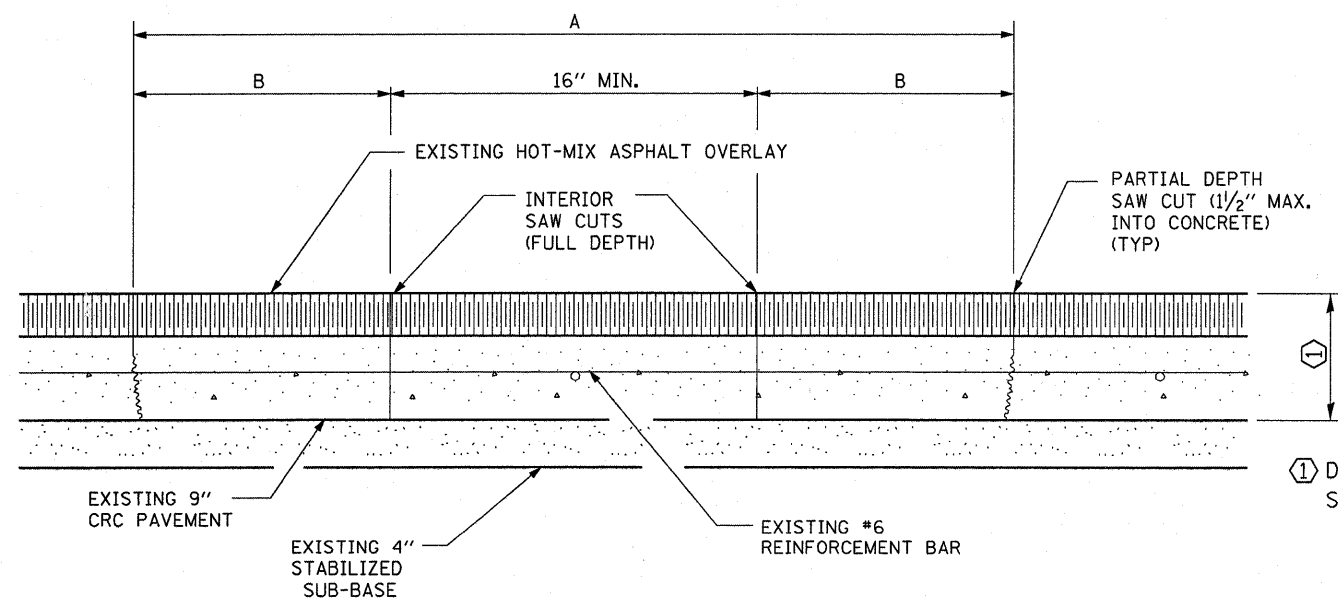


EXISTING PAVEMENT SAWING DETAIL
(AGAINST BITUMINOUS SHOULDER)

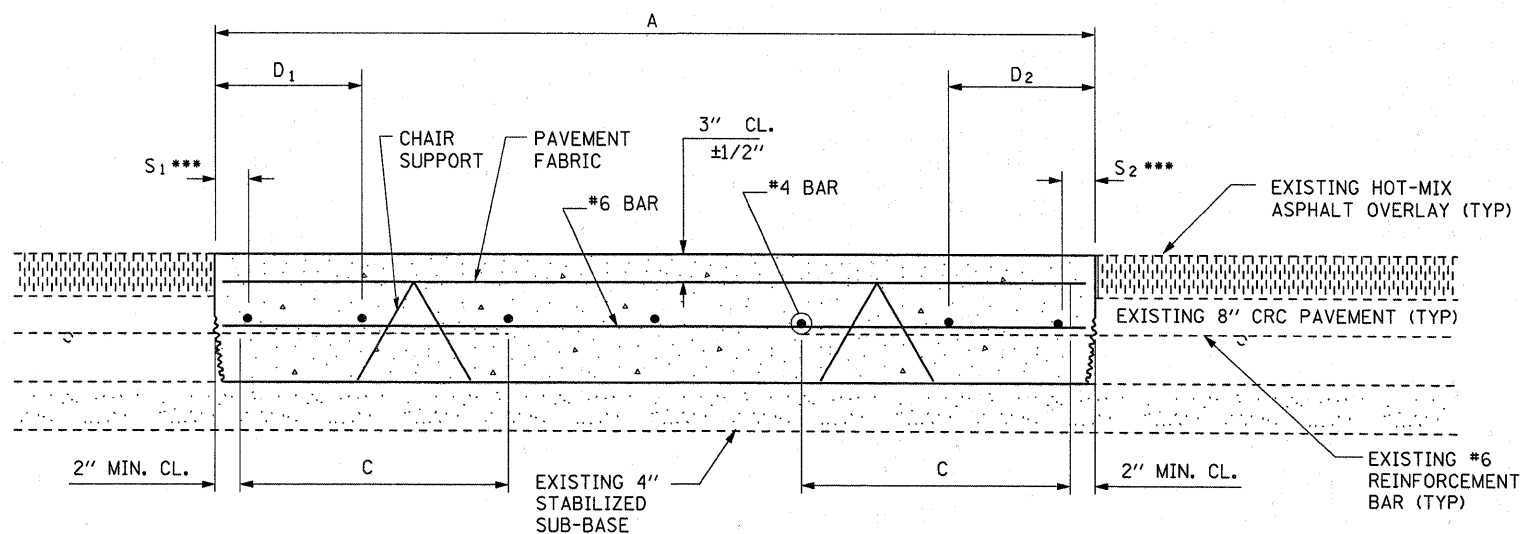


PROPOSED PAVEMENT DETAIL
(AGAINST BITUMINOUS SHOULDER)

EXISTING LONGITUDINAL REINFORCEMENT BARS	A (min.)	B (min.)	C (min.)
No. 6	6'-0"	24"	19"



EXISTING PAVEMENT
SAW CUTTING DETAIL



PROPOSED CLASS A PATCHING DETAIL

① DEPTH VARIES
SEE TYPICAL SECTIONS

- NOTES:**
- EVERY 3rd INTERSECTION MUST BE TIED
 - LAP NEW REINFORCEMENT WITH EXISTING LONGITUDINAL REINFORCEMENT
 - VARIABLES: WHERE S₁ AND S₂ ARE 2 1/2" MIN. AND 12" MAX. D₁ = 2(S₁) AND D₂ = 2(S₂)

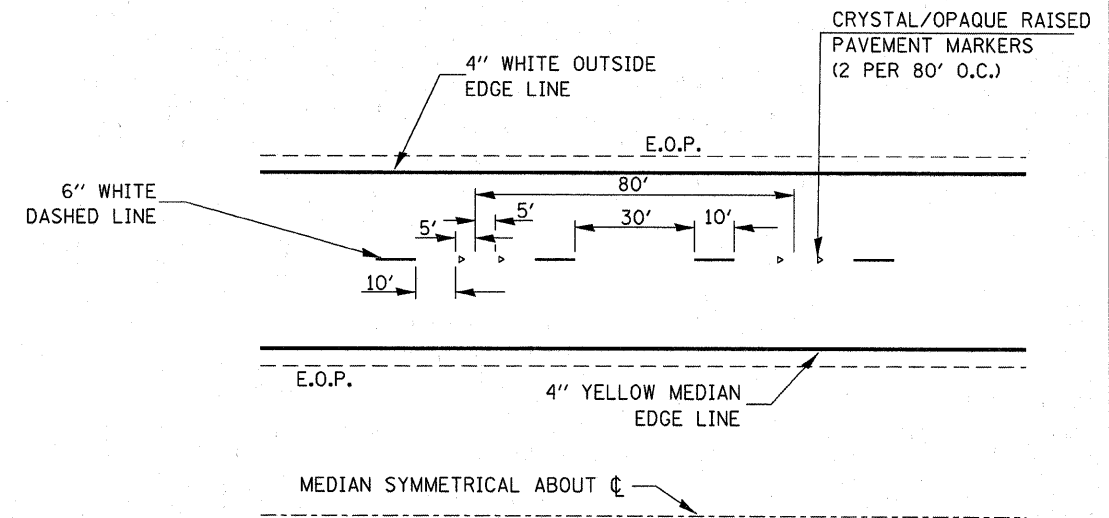
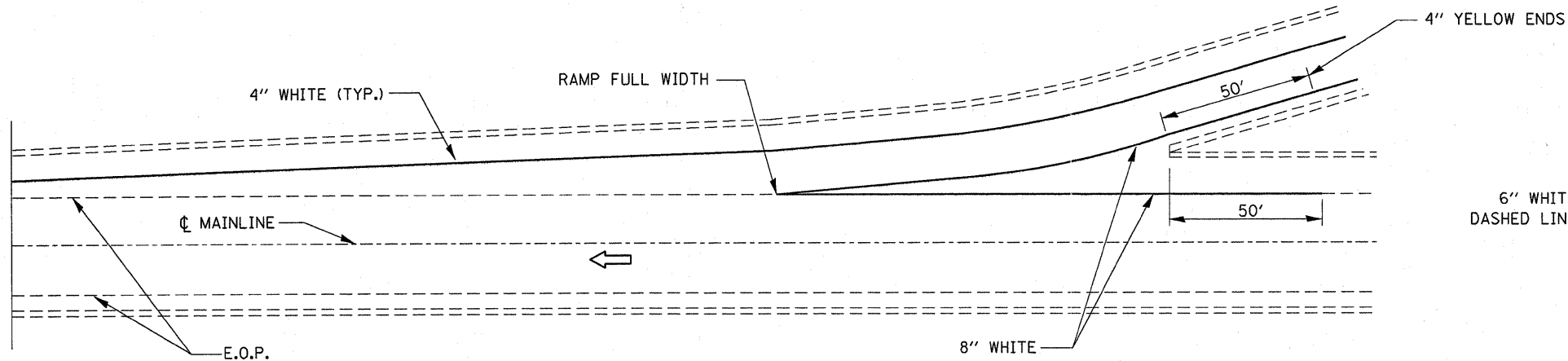
FILE NAME =	USER NAME = braboypc	DESIGNED - RON WOODSHANK	REVISED -
c:\p\work\p\p\dot\braboypc\d0264631\036837-sht-detail.dgn		DRAWN - RON WOODSHANK	REVISED -
PLT SCALE = 50.0000' / IN.		CHECKED -	REVISED -
PLT DATE = Apr 04, 2011 - 09:01:24 AM		DATE -	REVISED -

STATE OF ILLINOIS
DEPARTMENT OF TRANSPORTATION

CLASS A PATCHING DETAILS
WITH HMA OVERLAY

SCALE: _____ SHEET NO. 1 OF 1 SHEETS STA. _____ TO STA. _____

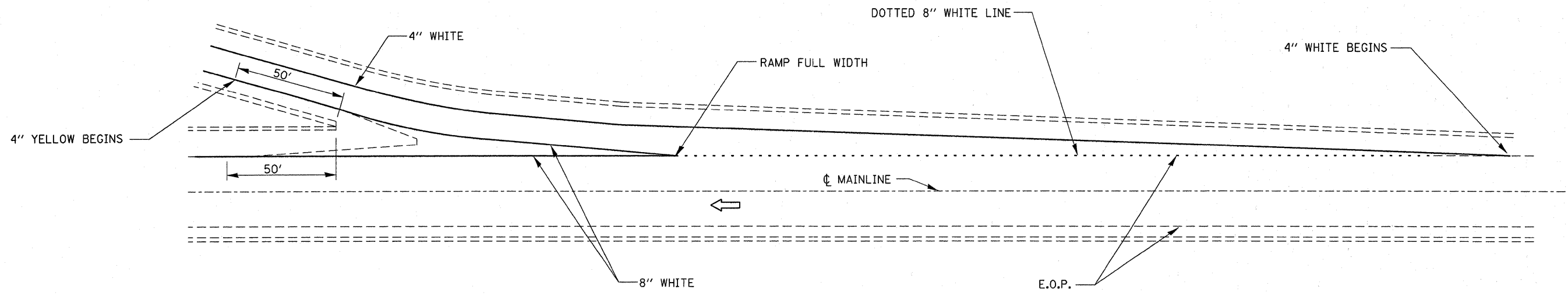
RTE.	SECTION	COUNTY	TOTAL SHEETS	SHEET NO.
FAI 55	D3 PATCHING 2012-2	GRUNDY	13	12
			CONTRACT NO. 66B37	
ILLINOIS				



TYPICAL PAVEMENT MARKING FOR ENTRANCE RAMP TERMINALS

TYPICAL PAVEMENT MARKINGS

NOTE:
 WHEN PATCHING IS ADJACENT TO 8" PAVEMENT MARKING LINE THE 8" STRIP SHALL BE REPLACED WITH TWO 4" LINES.
 RAISED REFLECTIVE PAVEMENT MARKERS THAT FALL WITHIN PATCHED BOUNDARIES WILL NOT BE REPLACED.



TYPICAL PAVEMENT MARKINGS FOR EXIT RAMP TERMINALS

FILE NAME =	USER NAME = braboypc	DESIGNED - RON WOODSHANK	REVISED -	STATE OF ILLINOIS DEPARTMENT OF TRANSPORTATION	TYPICAL PAVEMENT MARKING	RTE.	SECTION	COUNTY	TOTAL SHEETS	SHEET NO.
c:\pwork\pwork\braboypc\d0264631\0366837-ahb-details.dgn	DRAWN - RON WOODSHANK	REVISED -	FAI 55			D3 PATCHING 2012-2	GRUNDY	13	13	
PLOT SCALE = 50.0000' / IN.	CHECKED -	REVISED -	CONTRACT NO. 66B37							
PLOT DATE = Apr 04, 2011 - 09:01:17 AM	DATE -	REVISED -	ILLINOIS							
SCALE: _____ SHEET NO. 1 OF 1 SHEETS STA. _____ TO STA. _____										