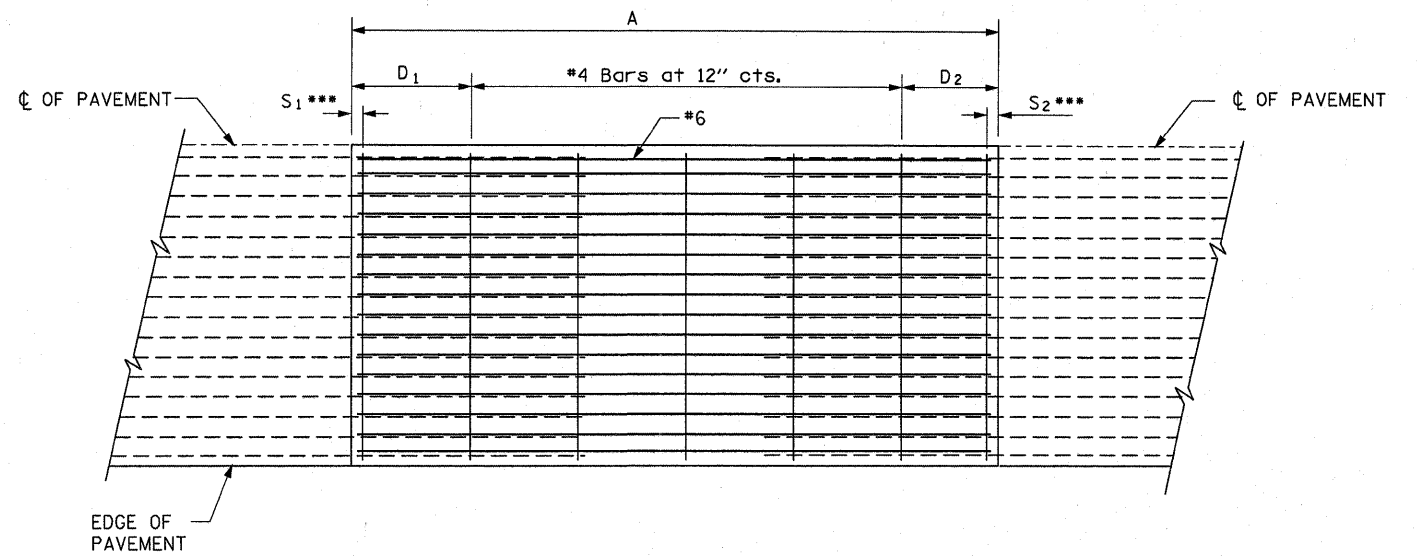
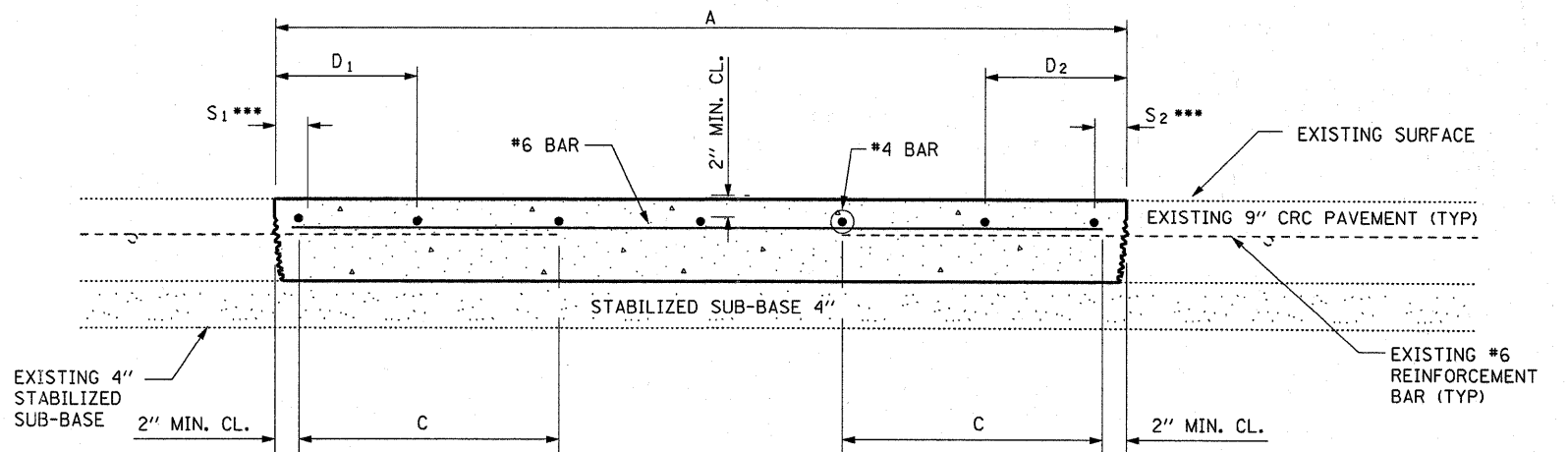


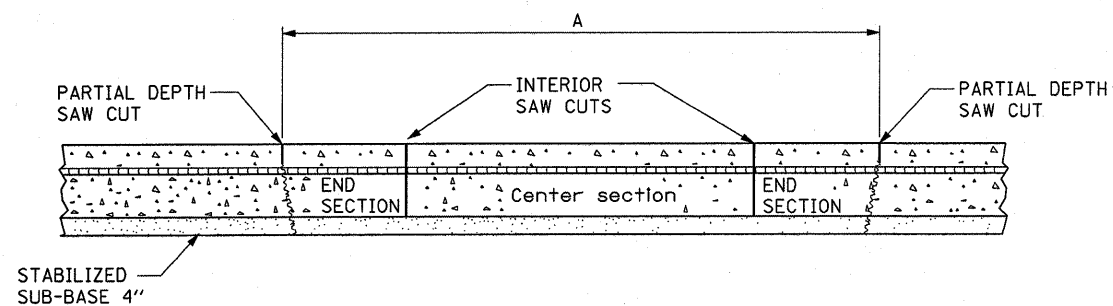
**EXISTING PAVEMENT SAWING DETAIL**  
(AGAINST BITUMINOUS SHOULDER)



**PROPOSED PAVEMENT DETAIL**  
(AGAINST CONCRETE SHOULDER)



**PROPOSED CLASS A PATCHING DETAIL**



**REMOVAL DETAIL**

EXISTING LONGITUDINAL REINFORCEMENT BARS	A (min.)	B (min.)	C (min.)
No. 6	6'-0"	21"	19"

**NOTES:**

- EVERY 3rd INTERSECTION MUST BE TIED
- LAP NEW REINFORCEMENT WITH EXISTING LONGITUDINAL REINFORCEMENT
- VARIABLES: WHERE  $S_1$  AND  $S_2$  ARE 2 1/2" MIN. AND 12" MAX.  $D_1 = 2(S_1)$  AND  $D_2 = 2(S_2)$