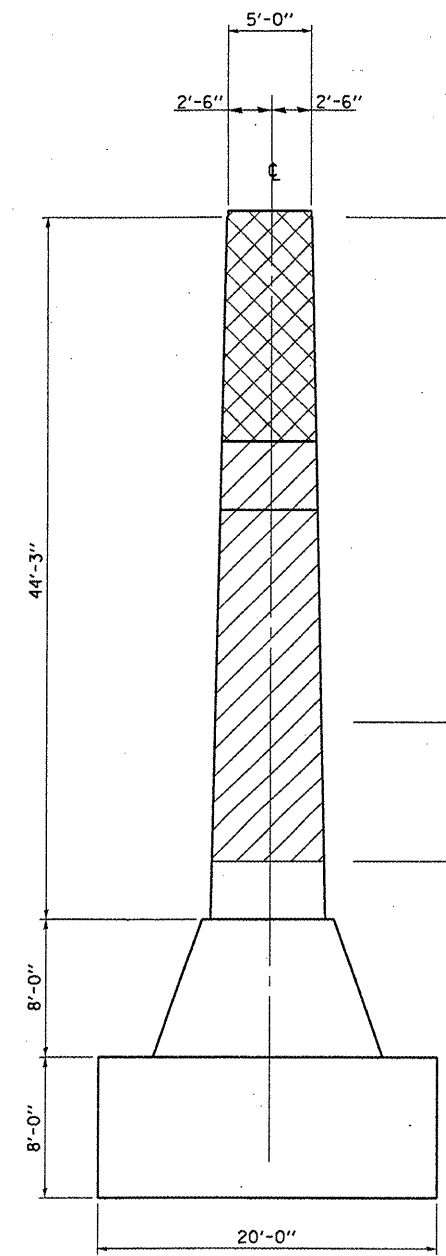
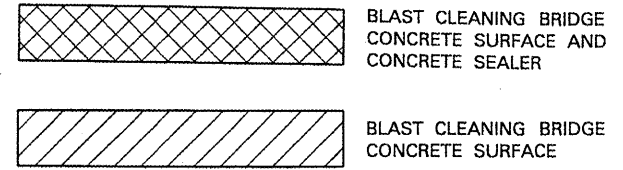
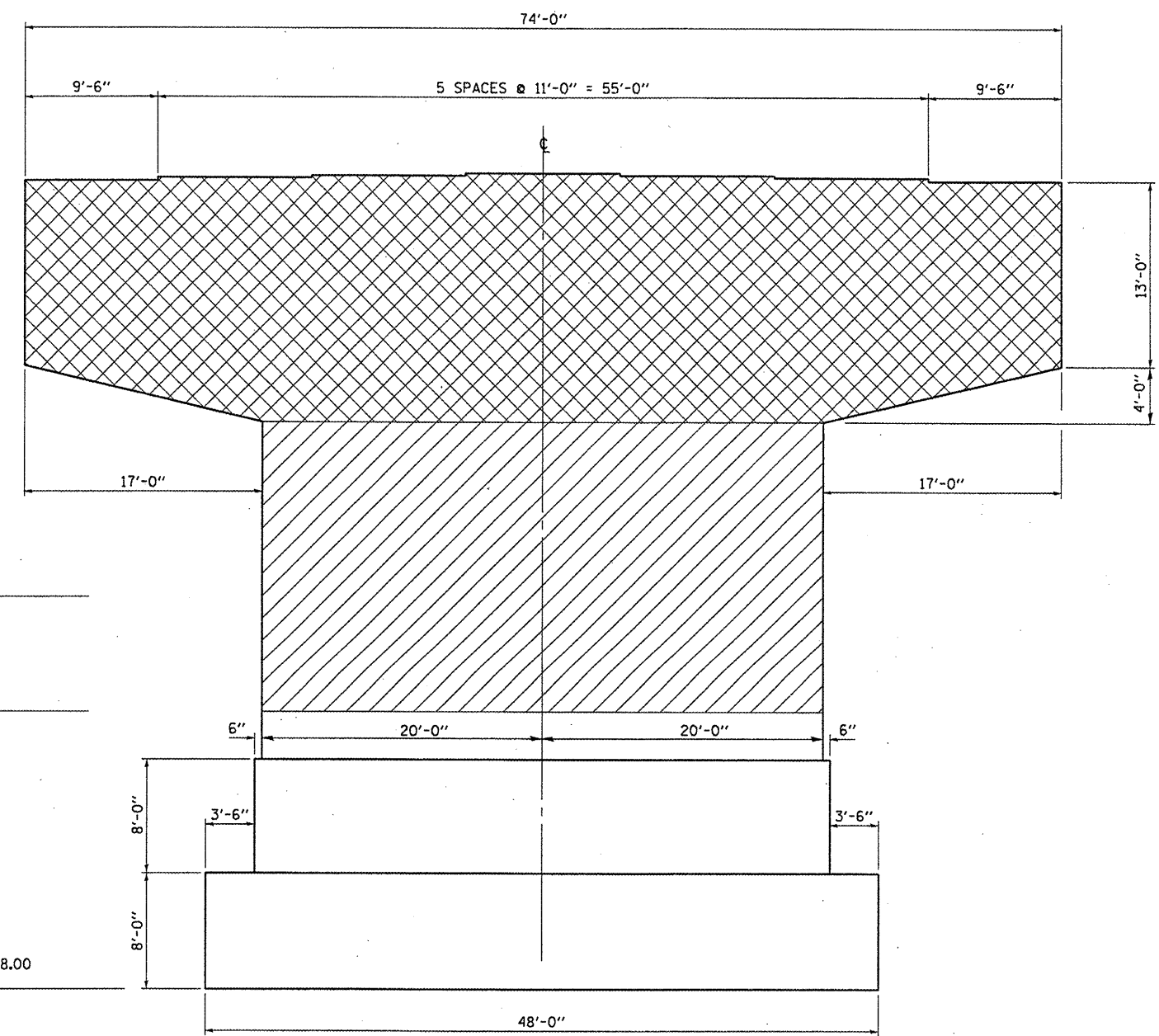


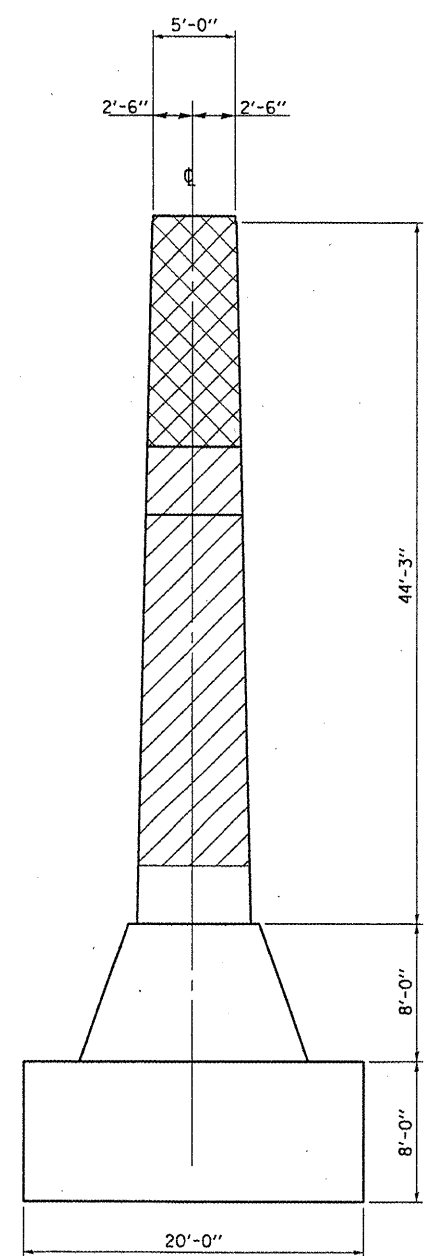
TOP PLAN



WEST END



SOUTH ELEVATION
NORTH ELEVATION SIMILAR



EAST END

BILL OF MATERIAL

ITEM	UNIT	TOTAL
BLAST CLEANING BRIDGE CONCRETE SURFACE	SQ FT	5462
CONCRETE SEALER	SQ FT	3485

PIER NO. 2
SN 050-0180
FAP ROUTE 68 (IL 23)
OVER ILLINOIS RIVER
SECTION (12R1)-3
LASALLE COUNTY
STA. 805+45.00

STATE OF ILLINOIS
DEPARTMENT OF TRANSPORTATION

PIER NO. 2 DETAILS

SCALE: SHEET NO. 5 OF 5 SHEETS STA. TO STA.

F.A.P. RTE.	SECTION	COUNTY	TOTAL SHEETS	SHEET NO.
68	(12R1)-3	LASALLE	9	9

CONTRACT NO. 66B33
ILLINOIS FED. AID PROJECT

FILE NAME	USER NAME	DESIGNED	REVISIONS
c:\pwork\pwork\petel\j\d0260492\0366833-sht-details.DGN	peteluj	YOGESH PATEL	
		YOGESH PATEL	
		BON WOODSHANK	