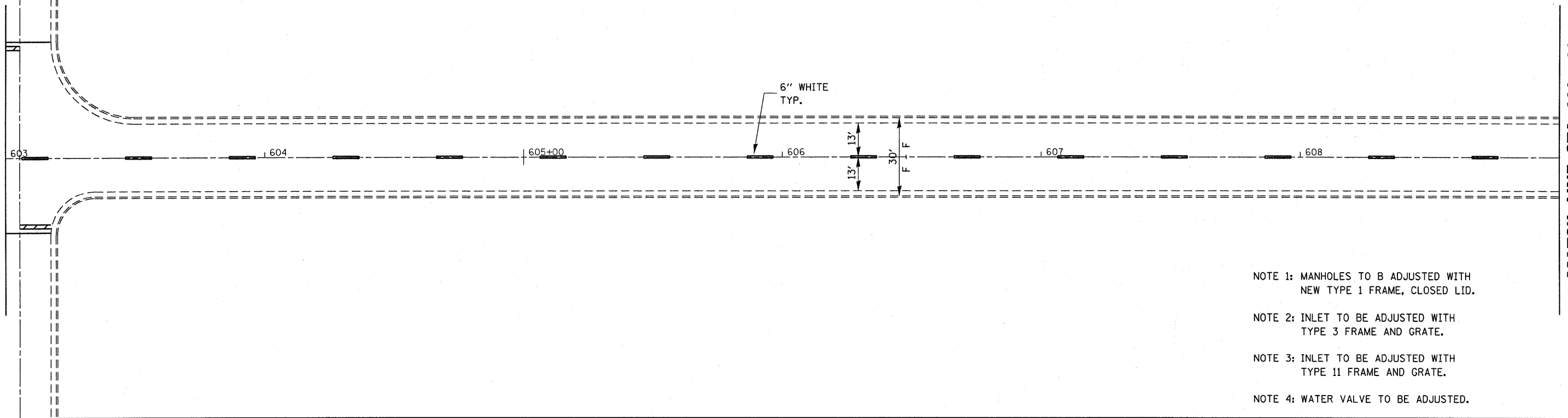




MATCH LINE STA. 603+00

MATCH LINE STA. 609+00

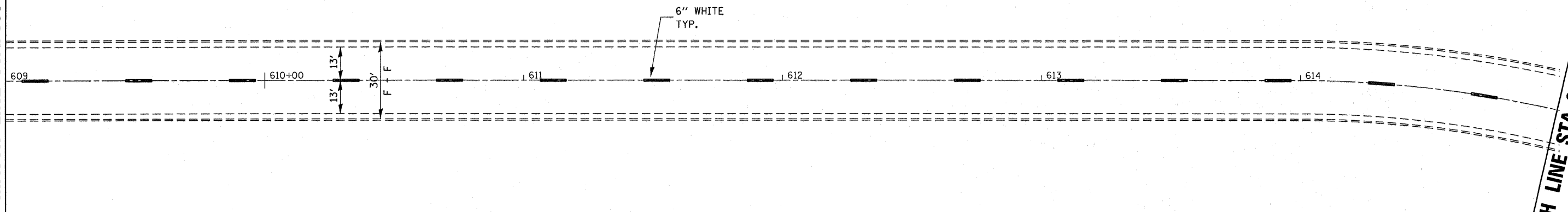


- NOTE 1: MANHOLES TO B ADJUSTED WITH NEW TYPE 1 FRAME, CLOSED LID.
- NOTE 2: INLET TO BE ADJUSTED WITH TYPE 3 FRAME AND GRATE.
- NOTE 3: INLET TO BE ADJUSTED WITH TYPE 11 FRAME AND GRATE.
- NOTE 4: WATER VALVE TO BE ADJUSTED.



MATCH LINE STA. 609+00

MATCH LINE STA. 615+00



FILE NAME = c:\pw_work\pwt\dot\wssilewskim\0248423	USER NAME = wssilewskim	DESIGNED -	REVISED -	STATE OF ILLINOIS DEPARTMENT OF TRANSPORTATION	IL. RTE. 23 - PARK ST. PAVEMENT MARKING			F.A.P. RTE.	SECTION	COUNTY	TOTAL SHEETS	SHEET NO.
	0366839-shd-detailed.DGN	DRAWN -	REVISED -					68	(52,99,100)RS-3, (37)RS-2	*	50	43
	PLOT SCALE = 20.0000' / IN.	CHECKED -	REVISED -					* LASALLE & LIVINGSTON		CONTRACT NO. 66839		
PLOT DATE = Mar 28, 2011 - 07:22:31 AM	DATE -	REVISED -		SCALE:	SHEET NO.	OF SHEETS	STA.	TO STA.	ILLINOIS FED. AID PROJECT			