

F.A.U. RTE.	SECTION	COUNTY	TOTAL SHEETS	SHEET NO.
3824	09-00176-00-RS	DUPAGE	17	1

CONTRACT NO. 63588

INDEX OF SHEETS

- 1 COVER SHEET AND INDEX OF SHEETS
- 2 GENERAL NOTES, HIGHWAY STANDARDS, AND SUMMARY OF QUANTITIES
- 3 TYPICAL SECTIONS
- 4-6 PLAN SHEETS
- 7-9 PAVEMENT MARKING SHEETS
- 10 BD-08 FRAMES AND LIDS ADJUSTMENT WITH MILLING
- 11 BD-22 PAVEMENT PATCHING FOR HMA SURFACED PAVEMENT
- 12 BD-32 BUTT JOINT AND HMA TAPER DETAILS
- 13 TC-10 TRAFFIC CONTROL AND PROTECTION FOR SIDE ROADS, INTERSECTIONS AND DRIVEWAYS
- 14 TC-13 DISTRICT ONE TYPICAL PAVEMENT MARKINGS
- 15 TC-16 PAVEMENT MARKING LETTERS AND SYMBOLS FOR TRAFFIC STAGING
- 16 TC-22 ARTERIAL ROAD INFORMATION SIGN
- 17 TC-26 DRIVEWAY ENTRANCE SIGNING

STATE OF ILLINOIS
DEPARTMENT OF TRANSPORTATION
DIVISION OF HIGHWAYS
**PLANS FOR PROPOSED
FEDERAL AID HIGHWAY PROJECT**

**FAU ROUTE 2672 (SPRING ROAD)
HARRISON STREET TO FAU ROUTE 3824 (VALLETTE STREET)
RESURFACING
SECTION 11-00176-00-RS
PROJECT M-9003(793)
DUPAGE COUNTY
JOB NO. C-91-417-11**

TRAFFIC DATA

ADT:
4,200 VPD (2008) 5,000 VPD (2030)

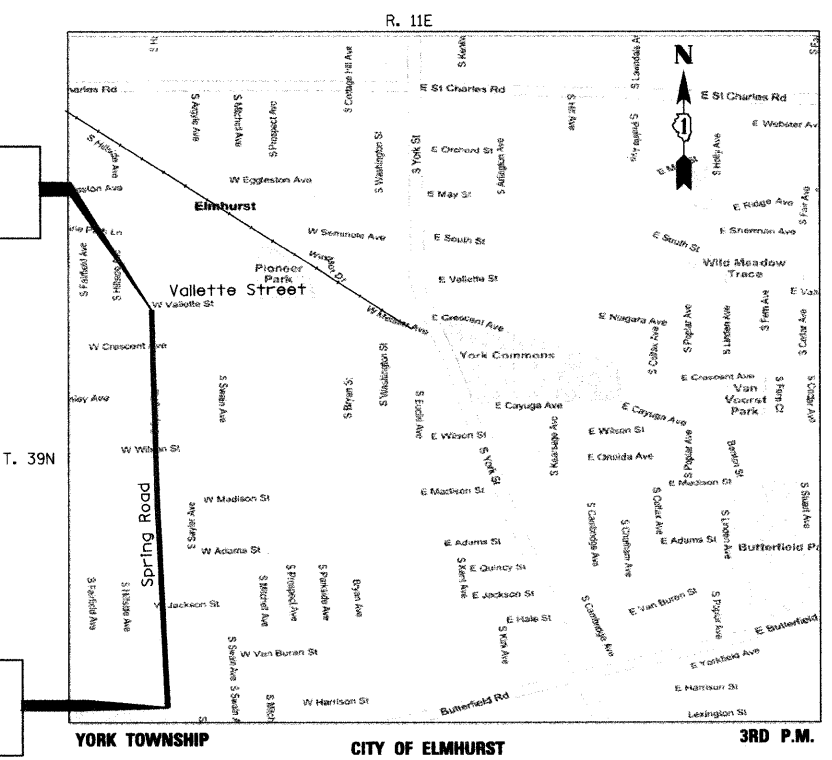
POSTED SPEED DESIGN SPEED
25 MPH (EXISTING) 30 MPH (EXISTING)
25 MPH (PROPOSED) 30 MPH (PROPOSED)

DESIGN DESIGNATION: 8,200 (2011) COLLECTOR 0.24 (RS)

PROJECT IS LOCATED IN THE CITY OF ELMHURST

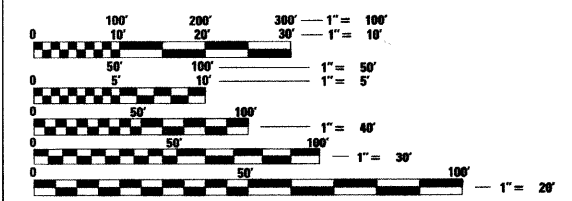
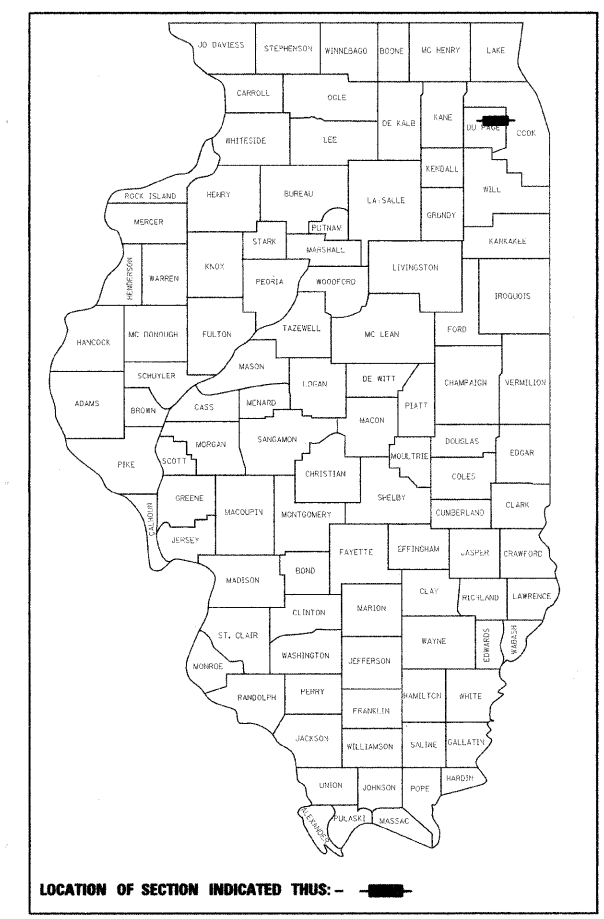
PROJECT ENDS STATION 152+41

PROJECT BEGINS STATION 100+34



LOCATION MAP

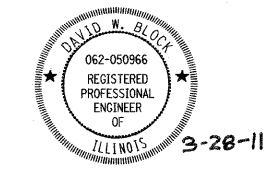
NOT TO SCALE
PROJECT LENGTH (GROSS AND NET)
5,207 FT (0.99 MILES)



FULL SIZE PLANS HAVE BEEN PREPARED USING STANDARD ENGINEERING SCALES. REDUCED SIZED PLANS WILL NOT CONFORM TO STANDARD SCALES. IN MAKING MEASUREMENTS ON REDUCED PLANS, THE ABOVE SCALES MAY BE USED.

J.U.L.I.E.
JOINT UTILITY LOCATION INFORMATION FOR EXCAVATION
1-800-892-0123
OR 811

CONTRACT NO. 63588



DAVID W. BLOCK, P.E.
NO. 062-050966
EXP. DATE 11/30/11

STATE OF ILLINOIS
DEPARTMENT OF TRANSPORTATION
DIVISION OF HIGHWAYS

APPROVED ON: March 25, 2011
Michael J. Hayes
CITY OF ELMHURST, DIRECTOR OF PUBLIC WORKS

PASSED: April 11, 2011
C. H. Holt
DISTRICT 1 ENGINEER OF LOCAL ROADS & STREETS

RELEASING FOR BID
BASED ON LIMITED REVIEW: April 11, 2011
Diana M. O'Keefe
DEPUTY DIRECTOR OF HIGHWAYS, REGION 1 ENGINEER

**PRINTED BY THE AUTHORITY
OF THE STATE OF ILLINOIS**

1475 EAST WOODFIELD ROAD, SUITE 800
SCHAUMBURG, ILLINOIS 60173
(847) 605-9600
PROGRAM AND OFFICE ENGINEER: CHARLES F. RIDDLE, P.E., (847) 705-4406, SCHAUMBURG, IL

