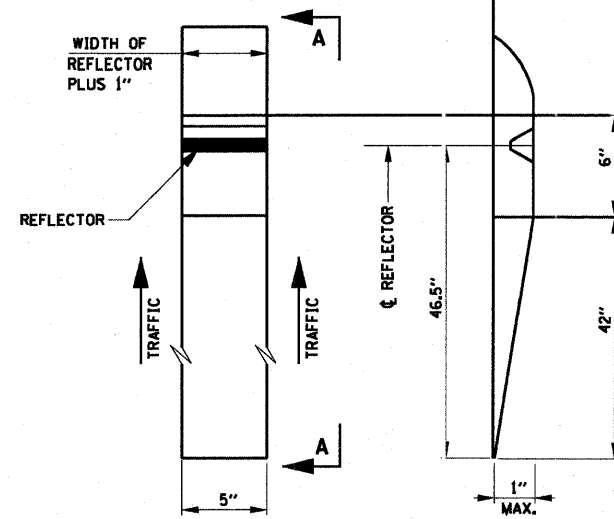


PLAN VIEW

SECTION B-B

TWO WAY



PLAN VIEW

SECTION A-A

ONE WAY

RECESSED REFLECTIVE MARKERS

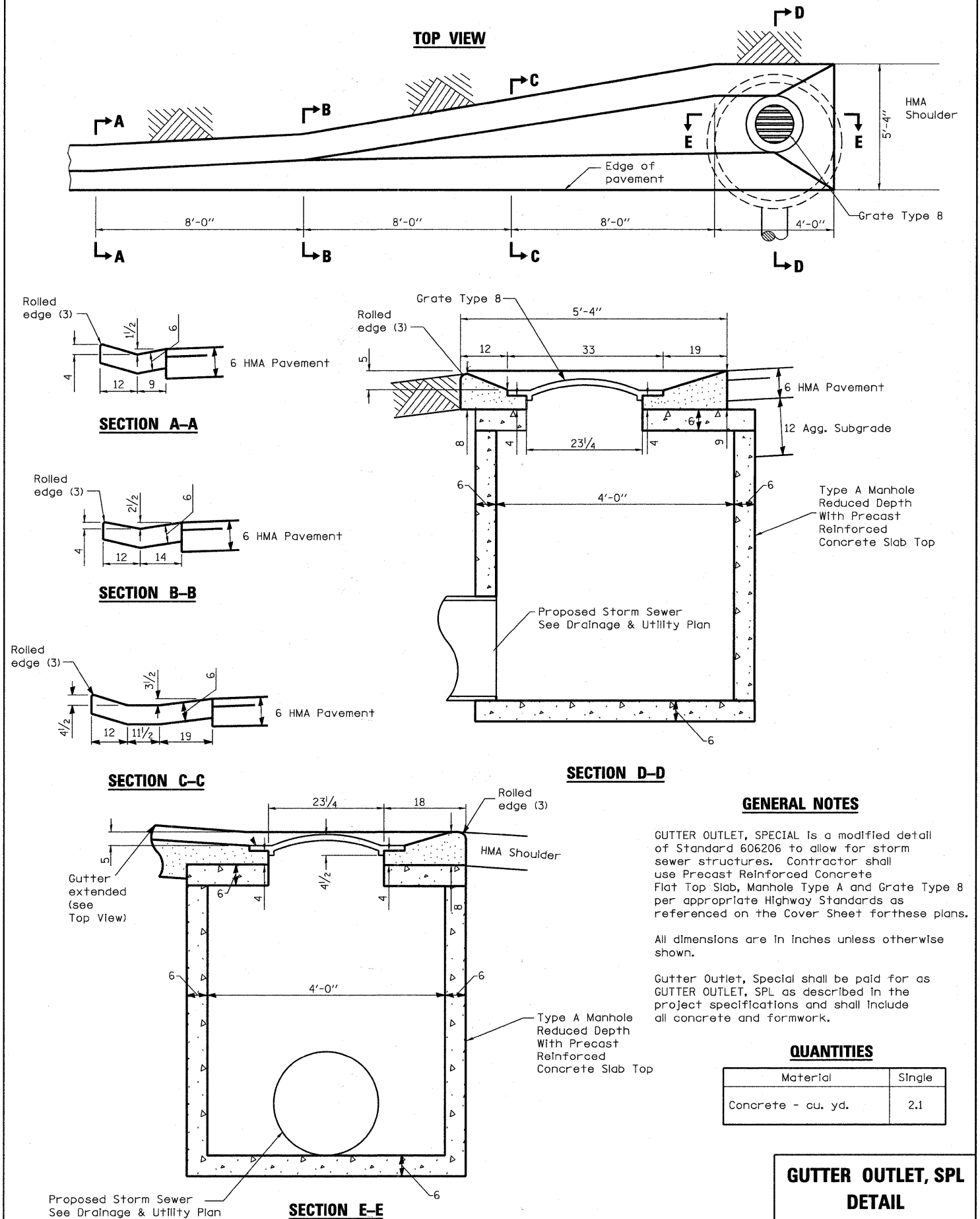
INSTALLATION NOTES:

1. SAWCUT IN DIMENSIONS SHOWN.
2. SAWCUT AREAS TO BE DRY AND FREE OF MATERIAL THAT ADVERSELY AFFECTS THE ADHESIVE BAND.
3. INSTALL THE REFLECTOR WITH AN APPROVED TWO-COMPONENT EPOXY ADHESIVE. EPOXY SHOULD NOT OBSCURE OR BLOCK THE LENS.
4. INSTALL TOP OF REFLECTOR 1/2 TO 3/4 INCH BELOW THE PAVEMENT SURFACE.
5. REFLECTOR SHALL BE 3M SERIES 290.

GENERAL NOTES:

1. INSTALLATION SHALL CONFORM TO IDOT HIGHWAY STANDARD 781001-02 (OR LATEST) FOR MARKER PLACEMENT.
2. IDOT STANDARD 781001-02 SHALL BE MODIFIED TO REFLECT IN RECESSED PAVEMENT MARKERS INSTEAD OF RAISED PAVEMENT MARKERS.

RECESSED REFLECTIVE PAVEMENT MARKINGS DETAIL



SECTION A-A

SECTION B-B

SECTION C-C

SECTION D-D

SECTION E-E

GENERAL NOTES

GUTTER OUTLET, SPECIAL is a modified detail of Standard 606206 to allow for storm sewer structures. Contractor shall use Precast Reinforced Concrete Flat Top Slab, Manhole Type A and Grate Type 8 per appropriate Highway Standards as referenced on the Cover Sheet for these plans.

All dimensions are in inches unless otherwise shown.

Gutter Outlet, Special shall be paid for as GUTTER OUTLET, SPL as described in the project specifications and shall include all concrete and formwork.

QUANTITIES

Material	Single
Concrete - cu. yd.	2.1

GUTTER OUTLET, SPL DETAIL

FILE NAME = H:\755-00 Blvin Phase II\CADD_Sheets\755-00-01-01.dgn

B Bollinger, Lach & Associates, Inc.
ITASCA, ILLINOIS

USER NAME = dbruckelmeyer	DESIGNED - DBB	REVISED -
PLOT SCALE = 20.0000' / IN.	DRAWN - DBB	REVISED -
PLOT DATE = 3/25/2011	CHECKED - CRF	REVISED -
	DATE - 03-28-11	REVISED -

BLVIN STREET OVER NIPPERSINK CREEK

CONSTRUCTION DETAILS

SCALE: N.T.S. SHEET NO. 54 OF 69 SHEETS STA. TO STA.

F.A. RTE.	SECTION	COUNTY	TOTAL SHEETS	SHEET NO.
	08-00355-00-BR	MCHENRY	69	54
CONTRACT NO. 63583				
FED ROAD DIST NO. 1 ILLINOIS FED AID PROJECT				