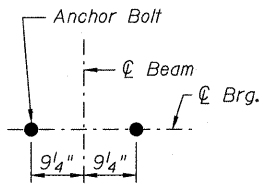
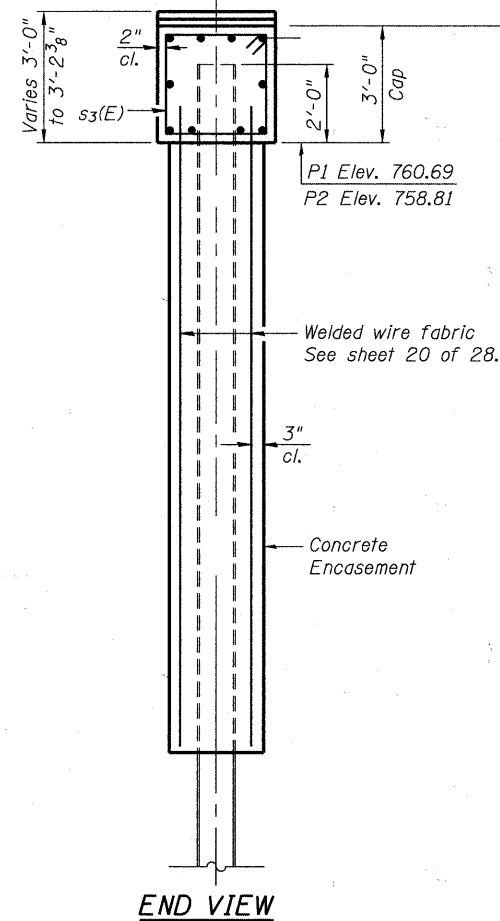


Notes:

Space reinforcement in cap to miss anchor bolts.
 Pour steps monolithically with cap.
 For details of piles, see sheet 20 of 28.
 If a portion of the concrete encasement is under water, reinforcement may be placed underwater into forms. Concrete shall be tremied according to Article 503.08 of the Standard Specifications to an elevation of 1'-0" above the water line at the time of construction.



ANCHOR BOLT LAYOUT



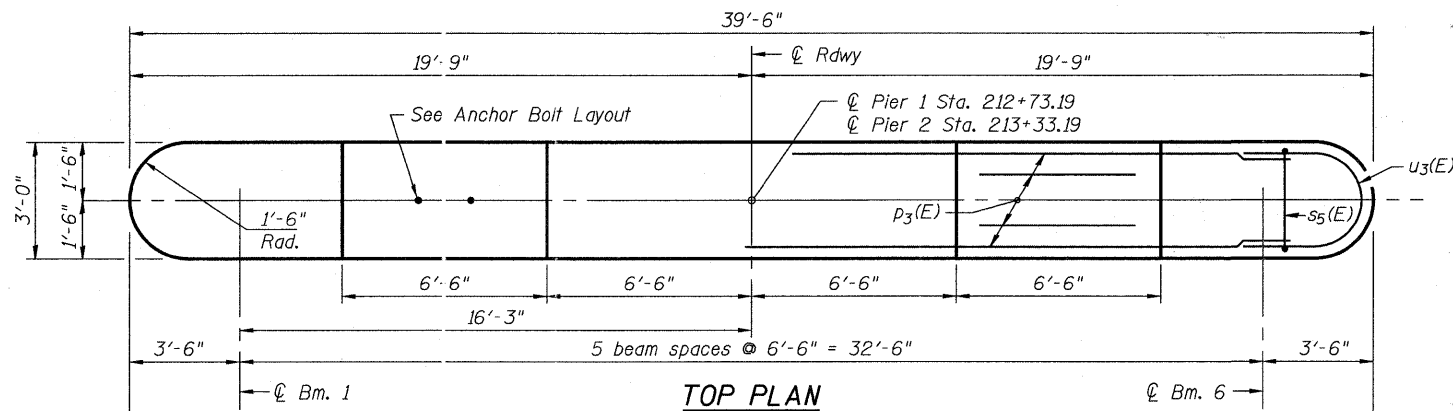
END VIEW

PIER 1 PILE DATA

Type: HP 14x73
 Nominal Required Bearing: 320 kips
 Factored Resistance Available: 180 kips
 Est. Length: 45 Feet
 No. Production Piles: 7
 No. Test Piles: 1
 Minimum Pile Tip Elev.: 718.0

PIER 2 PILE DATA

Type: HP 14x73
 Nominal Required Bearing: 320 kips
 Factored Resistance Available: 180 kips
 Est. Length: 45 Feet
 No. Production Piles: 7
 No. Test Piles: 1
 Minimum Pile Tip Elev.: 716.0



TOP PLAN

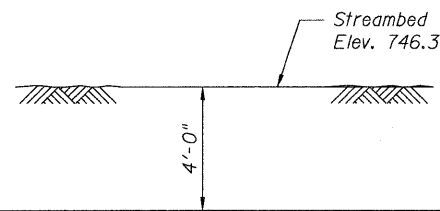
P1 Elev. 763.78
 P2 Elev. 761.92
 P1 Elev. 763.89
 P2 Elev. 762.02
 P1 Elev. 763.78
 P2 Elev. 761.92
 P1 Elev. 763.69
 P2 Elev. 761.81

5- #5 s3(E) bars at 10" cts. typ. between piles

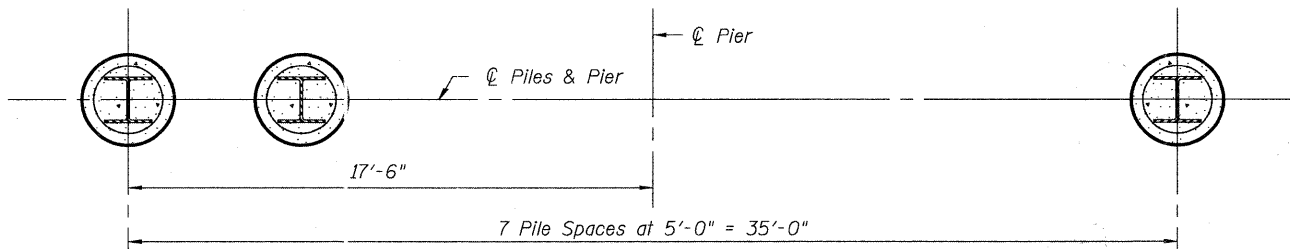
1- #5 s3(E) bar each end

10- #7 p3(E) bars See End View

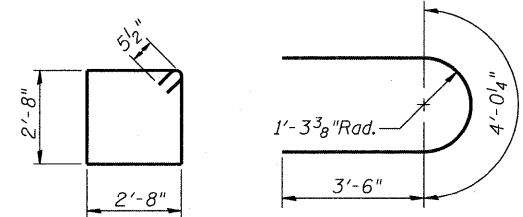
4- #6 u(E) bars each end



ELEVATION
(Looking North)



PLAN



BAR s3(E)

BAR u(E)

PIER 1 BILL OF MATERIAL

Bar	No.	Size	Length	Shape
p3(E)	10	#7	36'-6"	—
s3(E)	37	#5	11'-7"	□
u(E)	8	#6	11'-1"	U
Concrete Structures		Cu. Yd.	13.5	
Reinforcement Bars, Epoxy Coated		Pound	1330	
Furnishing - Steel Piles, HP 14x73		Foot	315	
Driving Piles		Foot	315	
Test Pile, Steel HP 14x73		Each	1	
Concrete Encasement		Cu. Yd.	27.0	
Underwater Structure Excavation Protection-Location 1 *		Each	1	

PIER 2 BILL OF MATERIAL

Bar	No.	Size	Length	Shape
p3(E)	10	#7	36'-6"	—
s3(E)	37	#5	11'-7"	□
u(E)	8	#6	11'-1"	U
Concrete Structures		Cu. Yd.	13.5	
Reinforcement Bars, Epoxy Coated		Pound	1330	
Furnishing - Steel Piles, HP 14x73		Foot	315	
Driving Piles		Foot	315	
Test Pile, Steel HP 14x73		Each	1	
Concrete Encasement		Cu. Yd.	24.0	
Underwater Structure Excavation Protection-Location 2 *		Each	1	

* See General Notes on Sheet 2 of 28.

FILE NAME = W:\755-818 Blivin Phase II\CADD\Sheets\Structure\1755-818_SHT-19_S-PIER 1.dgn



USER NAME = gonzalo
 PLOT SCALE =
 PLOT DATE = 3/25/2011

DESIGNED - JJT
 CHECKED - SRT
 DRAWN - GM
 CHECKED - SRT

REVISED -
 REVISED -
 REVISED -
 REVISED -

McHENRY COUNTY
DIVISION OF TRANSPORTATION
BLIVIN STREET OVER NIPPERSINK CREEK

PIERS 1 & 2
STRUCTURE NO. 056-3191

SCALE: SHEET NO. 19 OF 28 SHEETS STA. TO STA.

F.A. RTE.	SECTION	COUNTY	TOTAL SHEETS	SHEET NO.
	08-00355-00-BR	McHENRY	69	44
CONTRACT NO. 63583			ILLINOIS FED. AID PROJECT	