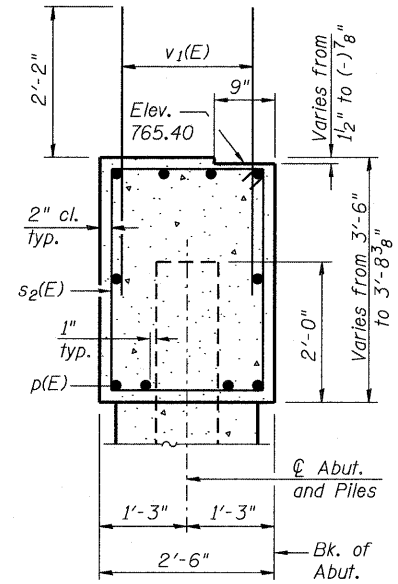
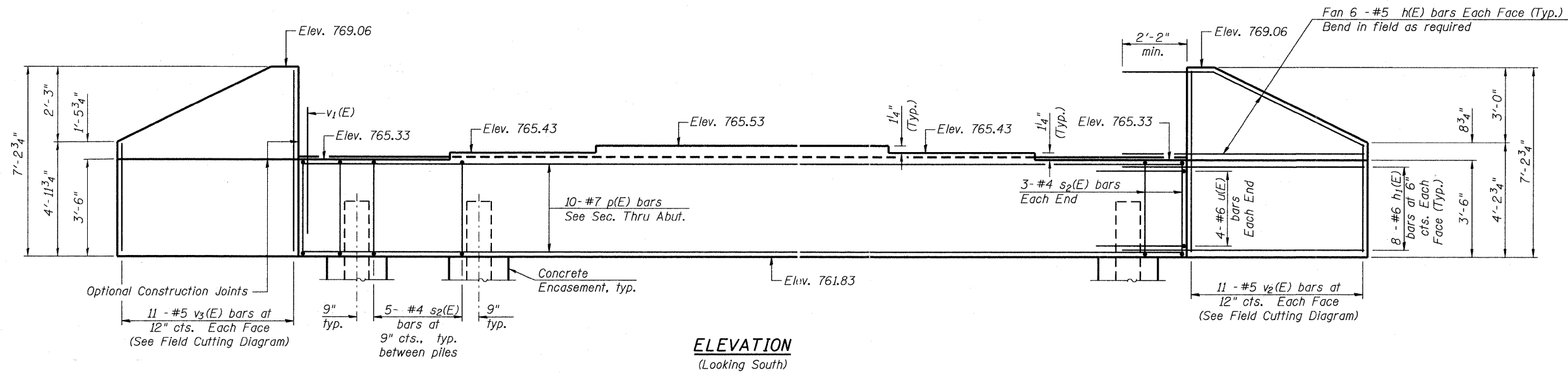
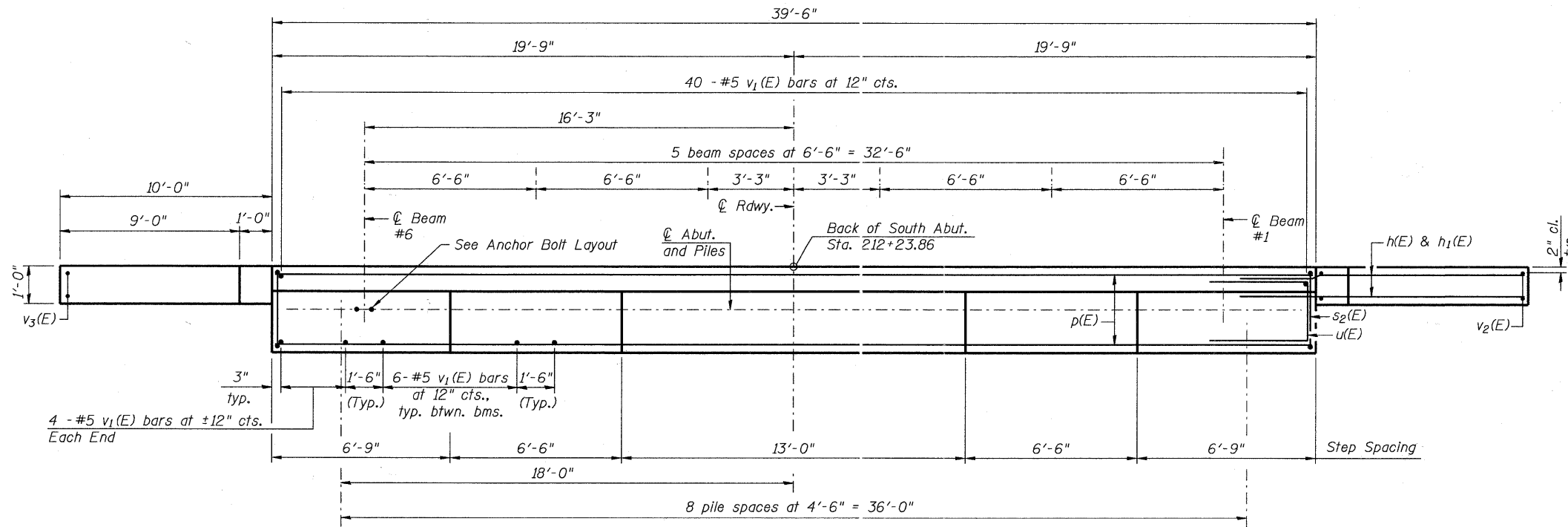


Notes:  
Four steps monolithically with cap.



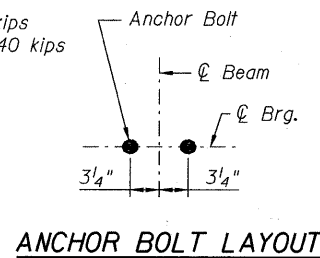
SEC. THRU ABUT.



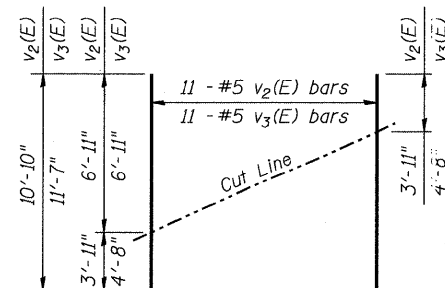
PLAN

**PILE DATA**

Type: Steel HP 14x73  
Nominal Required Bearing: 250 kips  
Factored Resistance Available: 140 kips  
Est. Length: 26 feet  
No. Production Piles: 8  
No. Test Piles: 1

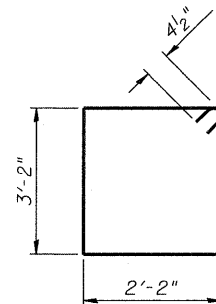


ANCHOR BOLT LAYOUT

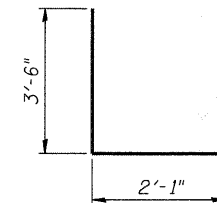


FIELD CUTTING DIAGRAM

Order v2(E) and v3(E) bars full length.  
Cut as shown and use remainder of bars in opposite face.



BAR s2(E)



BAR u(E)

**BILL OF MATERIAL**

Bar	No.	Size	Length	Shape
h(E)	24	#5	12'-8"	—
h1(E)	32	#6	13'-6"	—
p(E)	10	#7	39'-2"	—
s2(E)	46	#4	11'-5"	U
u(E)	8	#6	9'-1"	U
v1(E)	78	#5	4'-4"	—
v2(E)	11	#5	10'-10"	—
v3(E)	11	#5	11'-7"	—
Structure Excavation		Cu. Yd.	146	
Concrete Structures		Cu. Yd.	17.6	
Reinforcement Bars, Epoxy Coated		Pound	2850	
Furnishing Steel Piles, HP14x73		Foot	208	
Driving Piles		Foot	208	
Test Pile, Steel HP14x73		Each	1	
Concrete Encasement		Cu. Yd.	5.0	
Geocomposite Wall Drain		Sq. Yd.	26	
Porous Granular Embankment (Special)		Cu. Yd.	59	
Pipe Underdrains For Structures, 4"		Foot	64	

For details of piles and Concrete Encasement, see sheet 20 of 28.

AI-0 7-1-10

**Bollinger, Lach & Associates, Inc.**  
ITASCA, ILLINOIS

USER NAME = gonzo10  
DESIGNED - JJI  
CHECKED - SRT  
DRAWN - GM  
PLOT DATE = 3/25/2011

REVISI...  
REVISI...  
REVISI...  
REVISI...

REVISI...  
REVISI...  
REVISI...  
REVISI...

**McHENRY COUNTY**  
**DIVISION OF TRANSPORTATION**  
**BLVIN STREET OVER NIPPERSINK CREEK**

**SOUTH ABUTMENT**  
**STRUCTURE NO. 056-3191**

SCALE: SHEET NO. 17 OF 28 SHEETS STA. TO STA.

F.A. RTE.	SECTION	COUNTY	TOTAL SHEETS	SHEET NO.
	08-00355-00-BR	MCHENRY	69	42
CONTRACT NO. 63583				
[ILLINOIS] FED. AID PROJECT				