

THIS IMAGE IS NOT TO SCALE

NEW BUS SHELTERS ARE TO BE PLACED AT THE SAME LOCATIONS AS THE EXISTING BUS SHELTERS

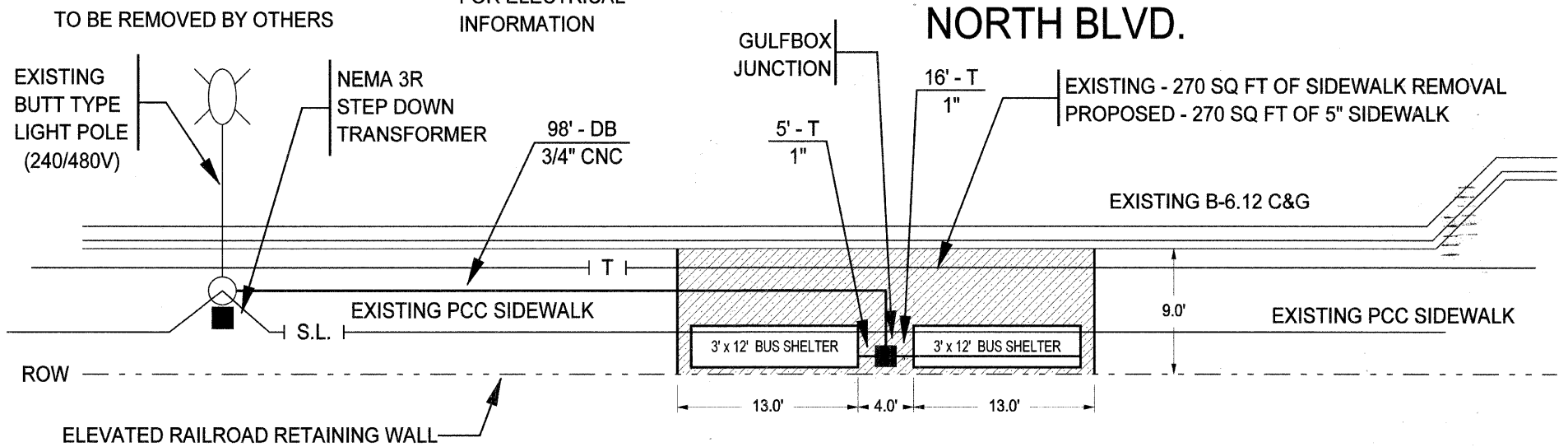
BUS SHELTER TO BE PROVIDED AND INSTALLED BY OTHERS UNLESS NOTED OTHERWISE (TYPICAL)

POWER TO BUS SHELTER IS FOR ADVERTISING DISPLAY CASE AND SECURITY LIGHTING (TYPICAL)

← HARLEM AVE.

EXISTING BUS SHELTERS TO BE REMOVED BY OTHERS

REFER TO DETAILS A-1, A-2, A-3, A-4 FOR ELECTRICAL INFORMATION



ALL WORK IS WITHIN THE PUBLIC R.O.W. AND OUTSIDE OF THE RAILROAD R.O.W.



THIS IMAGE IS NOT TO SCALE

REMOVE AND REPLACE CURB WITH HDCP RAMP FOLLOWING IDOT STANDARDS 606001 AND 424001

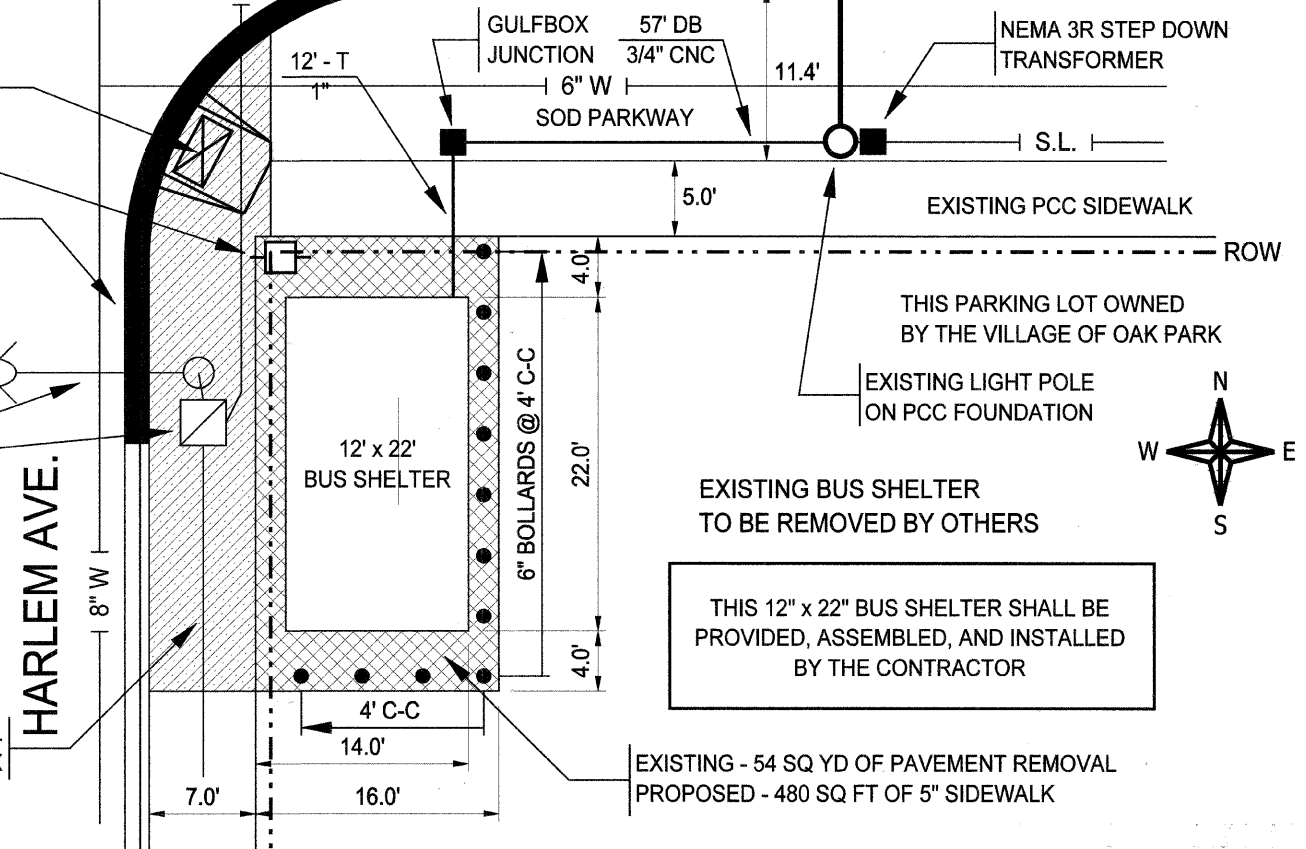
END OF CURB RADIUS RETURN

○ SOUTH BLVD.

PROPOSED - 16 SQ FT OF DETECTABLE WARNINGS  
EXISTING COM ED POWER POLE  
REFER TO DETAILS A-1, A-2, A-3, A-4 FOR ELECTRICAL INFORMATION  
40 FT OF CURB REM & REPL REPLACE WITH B-6.12 VARIABLE HEIGHT C&G  
EXISTING LIGHT POLE ON PCC FOUNDATION (240/480V) AND TRAFFIC SIGNAL HANDHOLE

LANDSCAPE FURNITURE AND PARKING BLOCKS TO BE REMOVED BY OTHERS

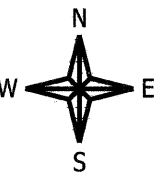
EXISTING - 282 SQ FT OF SIDEWALK REMOVAL  
PROPOSED - 282 SQ FT OF 5\"/>



EXISTING BUS SHELTER TO BE REMOVED BY OTHERS

THIS 12\"/>

EXISTING - 54 SQ YD OF PAVEMENT REMOVAL  
PROPOSED - 480 SQ FT OF 5\"/>



FILENAME = plan_sheet_3b_rev.dc	USER NAME = KOPERNIAK	DESIGNED BY: KOPERNIAK	REVISED: 03/30/2011
		DRAWN BY: KOPERNIAK	REVISED: 04/11/2011
	PLOT SCALE = 1" = 5'	CHECKED BY: BUDRICK	REVISED:
	PLOT DATE = FEB 25, 2011	DATE: MAR 2, 2011	REVISED:



VILLAGE OF OAK PARK

PROPOSED 5. North Boulevard, east of Harlem Avenue  
6. Harlem Avenue at South Boulevard

SCALE:	SHEET NO. OF SHEETS	STA. TO STA.
--------	---------------------	--------------

FAP R/F:	SECTION	COUNTY	TOTAL SHEETS	SHEET NO.
348	10-00251-00-MS	COOK	16	6
		CONTRACT NO. 63538		
ILLINOIS FED. AID PROJECT				