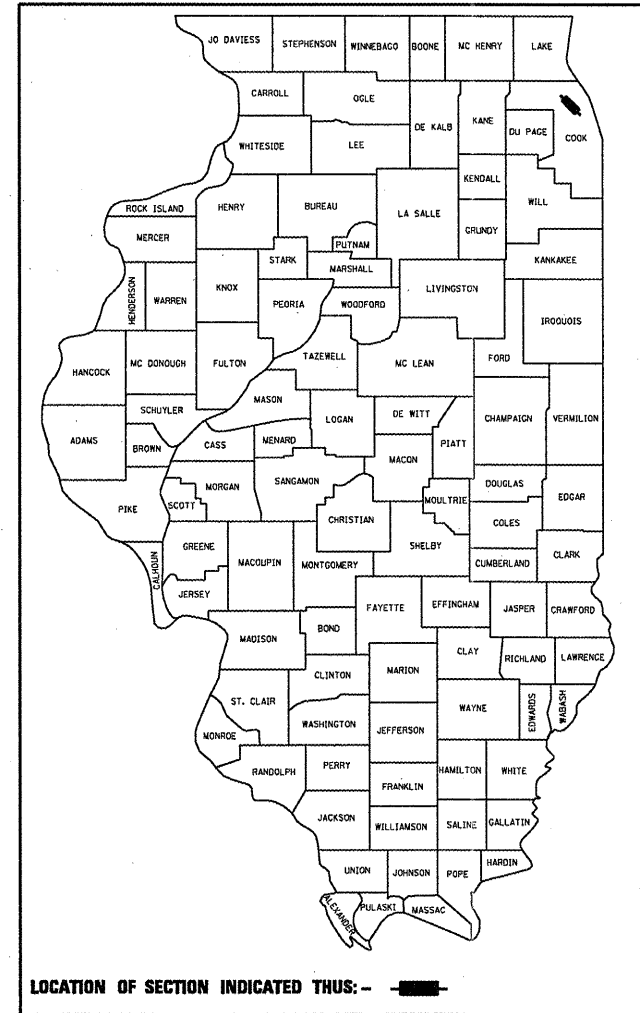


F.A.I. RTE.	SECTION	COUNTY	TOTAL SHEETS	SHEET NO.
90	2011-029-1	COOK	20	1
		ILLINOIS	CONTRACT NO. 60P32	

**STATE OF ILLINOIS  
DEPARTMENT OF TRANSPORTATION  
DIVISION OF HIGHWAYS**

**D-91-511-11**



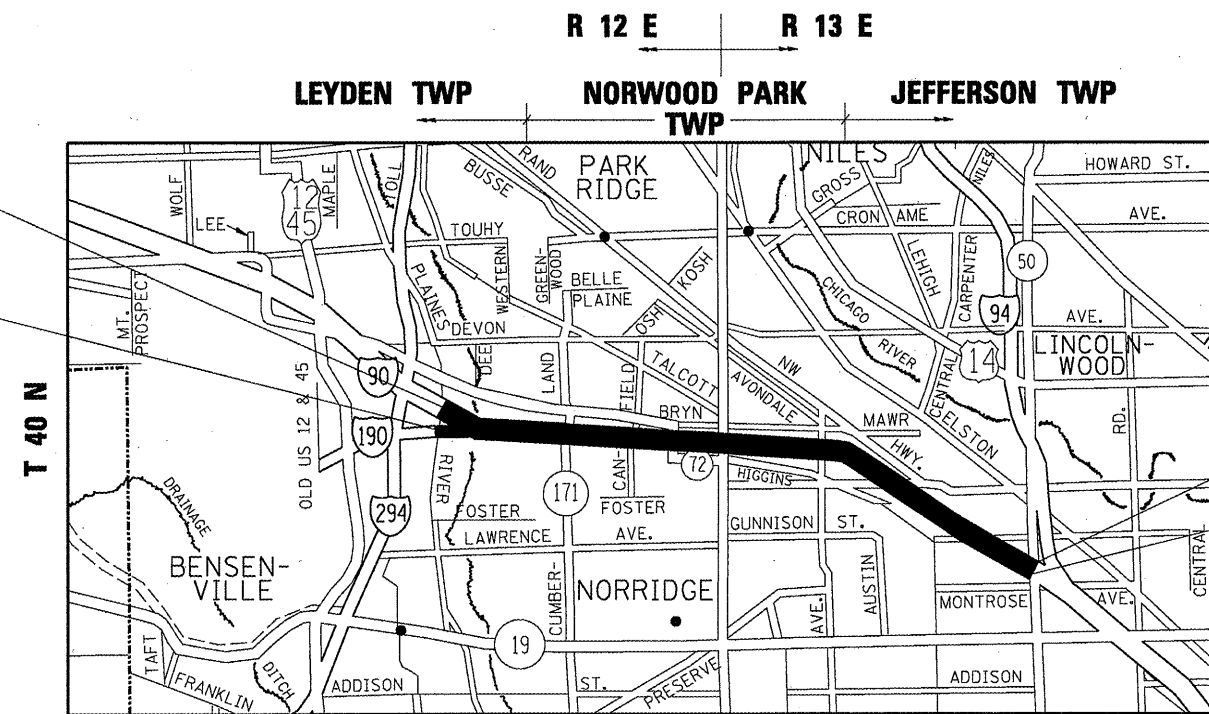
LOCATION OF SECTION INDICATED THUS: - - ■ - -

FOR INDEX OF SHEETS, SEE SHEET NO. 2

**IMPROVEMENT LOCATED  
IN THE CITY OF CHICAGO**

# PROPOSED HIGHWAY PLANS

**F.A.I. ROUTE 90: I-90 (KENNEDY EXPRESSWAY)  
EAST RIVER ROAD TO I-90/94 (EDENS JUNCTION)  
SECTION: 2011-029-1  
CRACK & JOINT SEALING  
COOK COUNTY  
C-91-511-11**



**LEYDEN, NORWOOD PARK, & JEFFERSON TOWNSHIPS**

**IMPROVEMENT BEGINS  
WESTBOUND STATION 3341+21**

**IMPROVEMENT BEGINS  
EASTBOUND STATION 3341+21**

**IMPROVEMENT ENDS  
WESTBOUND STATION 3645+80**

**IMPROVEMENT ENDS  
EASTBOUND STATION 3646+77**

**TRAFFIC DATA**

2010 ADT = 212,100

POSTED SPEED LIMIT = 55 MPH

**C.U.A.N.  
CHICAGO UTILITY ALERT NETWORK  
1-312-744-7000**

**PROJECT ENGINEER: ROBERT BORO (847) 705-4178**

**PROJECT MANAGER: ISSAM RAYYAN**

**CONTRACT NO. 60P32**

**GROSS AND NET LENGTH OF IMPROVEMENT (WESTBOUND) = 30,459 LIN FT = 5.77 MILES**

**GROSS AND NET LENGTH OF IMPROVEMENT (EASTBOUND) = 30,556 LIN FT = 5.79 MILES**

STATE OF ILLINOIS  
DEPARTMENT OF TRANSPORTATION  
DIVISION OF HIGHWAYS

SUBMITTED APRIL 8 20 11  
*Diane M. O'Hea* DEPUTY DIRECTOR OF HIGHWAYS, REGION ENGINEER

May 13 20 11  
*Scott E. Stitt* P.E. acting ENGINEER OF DESIGN AND ENVIRONMENT

May 13 20 11  
*Christine M. Reed* DIRECTOR OF HIGHWAYS, CHIEF ENGINEER

**PRINTED BY THE AUTHORITY  
OF THE STATE OF ILLINOIS**

**INDEX OF SHEETS**

SHEET NO.	DESCRIPTION
1	TITLE SHEET
2	INDEX OF SHEETS, STATE STANDARDS AND GENERAL NOTES
3	SUMMARY OF QUANTITIES
4 - 15	PROPOSED PLANS AND PAVEMENT MARKING PLANS
16	CRACK & JOINT SEALING DETAIL
17	TRAFFIC CONTROL DETAILS FOR FREEWAY SINGLE & MULTI-LANE WEAVE (TC-09)
18 - 19	MULTI-LANE FREEWAY PAVEMENT MARKING DETAILS (TC-12)
20	TRAFFIC CONTROL DETAILS FOR FREEWAY SHOULDER CLOSURES AND PARTIAL RAMP CLOSURES (TC-17)

**STANDARDS**

- 701400-05 APPROACH TO LANE CLOSURE, FREEWAY/EXPRESSWAY
- 701401-06 LANE CLOSURE, FREEWAY/EXPRESSWAY
- 701411-07 LANE CLOSURE, MULTILANE, AT ENTRANCE OR EXIT RAMP, FOR SPEEDS  $\geq$  45 MPH
- 701426-04 LANE CLOSURE, MULTILANE, INTERMITTENT OR MOVING OPER., FOR SPEEDS  $\geq$  45 MPH
- 701446-02 TWO LANE CLOSURE FREEWAY/EXPRESSWAY
- 701901-01 TRAFFIC CONTROL DEVICES

**GENERAL NOTES**

BEFORE STARTING ANY EXCAVATION, THE CONTRACTOR SHALL CALL "C.U.A.N." (CHICAGO UTILITY ALERT NETWORK) AT (312)744-7000 FOR FIELD LOCATIONS OF BURIED ELECTRIC, TELEPHONE AND GAS UTILITIES. (48 HOUR NOTIFICATION IS REQUIRED).

THE CONTRACTOR WILL NOT BE ALLOWED TO SET UP A YARD OR FIELD OFFICE ON STATE PROPERTY WITHOUT WRITTEN PERMISSION FROM THE DEPARTMENT.

THE CONTRACTOR WILL NOT BE ALLOWED TO SET UP A YARD OR FIELD OFFICE ON TOLLWAY PROPERTY WITHOUT WRITTEN PERMISSION FROM THE ISTHA.

IT SHALL BE THE CONTRACTOR'S RESPONSIBILITY TO VERIFY ALL DIMENSIONS AND CONDITIONS EXISTING IN THE FIELD PRIOR TO CONSTRUCTION AND ORDERING OF MATERIALS.

THE CONTRACTOR SHALL CONTACT THE DISTRICT ONE TRAFFIC CONTROL SUPERVISOR AT (847) 705-4151 A MINIMUM OF 72 HOURS IN ADVANCE OF BEGINNING WORK.

THE ILLINOIS STATE TOLL HIGHWAY AUTHORITY SHALL BE NOTIFIED AT LEAST 48 HOURS IN ADVANCE FOR ANY LANE CLOSURE DURING THE AM AND PM PEAK HOURS FOR WORK ADJACENT TO THE NORTHWEST TOLLWAY SECTION. ISTHA DAILY TRAFFIC CONTROL AUTHORIZATION AT (630) 241-6800 EXT 3822

THE ENGINEER SHALL CONTACT THE DISTRICT ONE TRAFFIC CONTROL SUPERVISOR, AT (847) 705-4151 A MINIMUM OF TWO (2) WEEKS PRIOR TO THE PLACEMENT OF PERMANENT PAVEMENT MARKINGS.

ALL CRACK ROUTING & CRACK SEALING LOCATIONS WILL BE DETERMINED IN THE FIELD BY THE ENGINEER. CRACK ROUTING SHALL BE OMITTED WHERE VEHICLE DETECTOR LOOPS & RAISED REFLECTIVE PAVEMENT MARKERS ARE PRESENT IN THE PAVEMENT.

DO NOT SCALE PLANS FOR CONSTRUCTION DIMENSIONS.

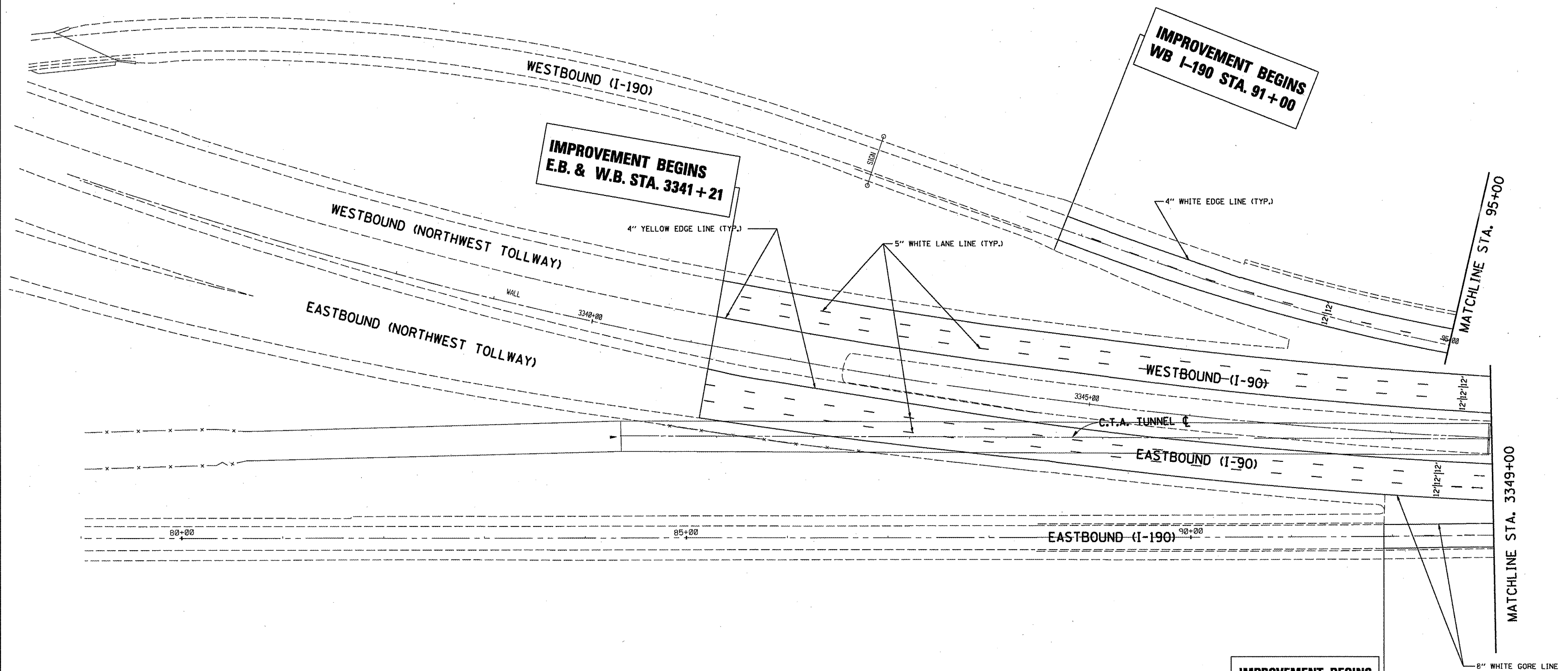
FILE NAME = D:\151111-eh-plan.dgn	USER NAME = notherbo	DESIGNED -	REVISED -	<b>STATE OF ILLINOIS DEPARTMENT OF TRANSPORTATION</b>	<b>IL. ROUTE 90 (KENNEDY EXPRESSWAY) INDEX OF SHEETS, LIST OF STATE STANDARDS &amp; PLAN NOTES</b>			F.A.I. RTE. 90	SECTION 2011-029-1	COUNTY COOK	TOTAL SHEETS 20	SHEET NO. 2	
	PLOT SCALE = 100.0000' / IN.	DRAWN -	REVISED -		SCALE: 1"= 50'	SHEET NO.	OF	SHEETS	STA.	TO STA.	ILLINOIS FED. AID PROJECT		
	PLOT DATE = 4/8/2011	CHECKED -	REVISED -									CONTRACT NO. 60P32	
		DATE -	REVISED -									CONTRACT NO. 60P32	

ROUTE	SECTION	COUNTY	TOTAL SHEETS	SHEET NUMBER
FAI-90	2011-029-I	COOK	20	3

CONTRACT NO. 60P32

SUMMARY OF QUANTITIES				URBAN 100% STATE	
CODE NO	DESCRIPTION	UNITS	TOTAL	CONSTRUCTION TYPE CODE: 0005	
45100100	CRACK ROUTING (PAVEMENT)	FOOT	360125	360125	
45100200	CRACK FILLING	POUND	136848	136848	
67100100	MOBILIZATION	L SUM	1	1	
X7011015	TRAFFIC CONTROL AND PROTECTION (EXPRESSWAYS)	L SUM	1	1	
X7800815	HOT SPRAY THERMOPLASTIC PAVEMENT MARKING LINE - 4 INCH	FOOT	96147	96147	
* X7800825	HOT SPRAY THERMOPLASTIC PAVEMENT MARKING LINE - 5 INCH	FOOT	139919	139919	
* X7800845	HOT SPRAY THERMOPLASTIC PAVEMENT MARKING LINE - 8 INCH	FOOT	29238	29238	
	<i>*Specialty Items</i>				

ILLINOIS DEPARTMENT OF  
TRANSPORTATION  
  
SUMMARY OF QUANTITIES



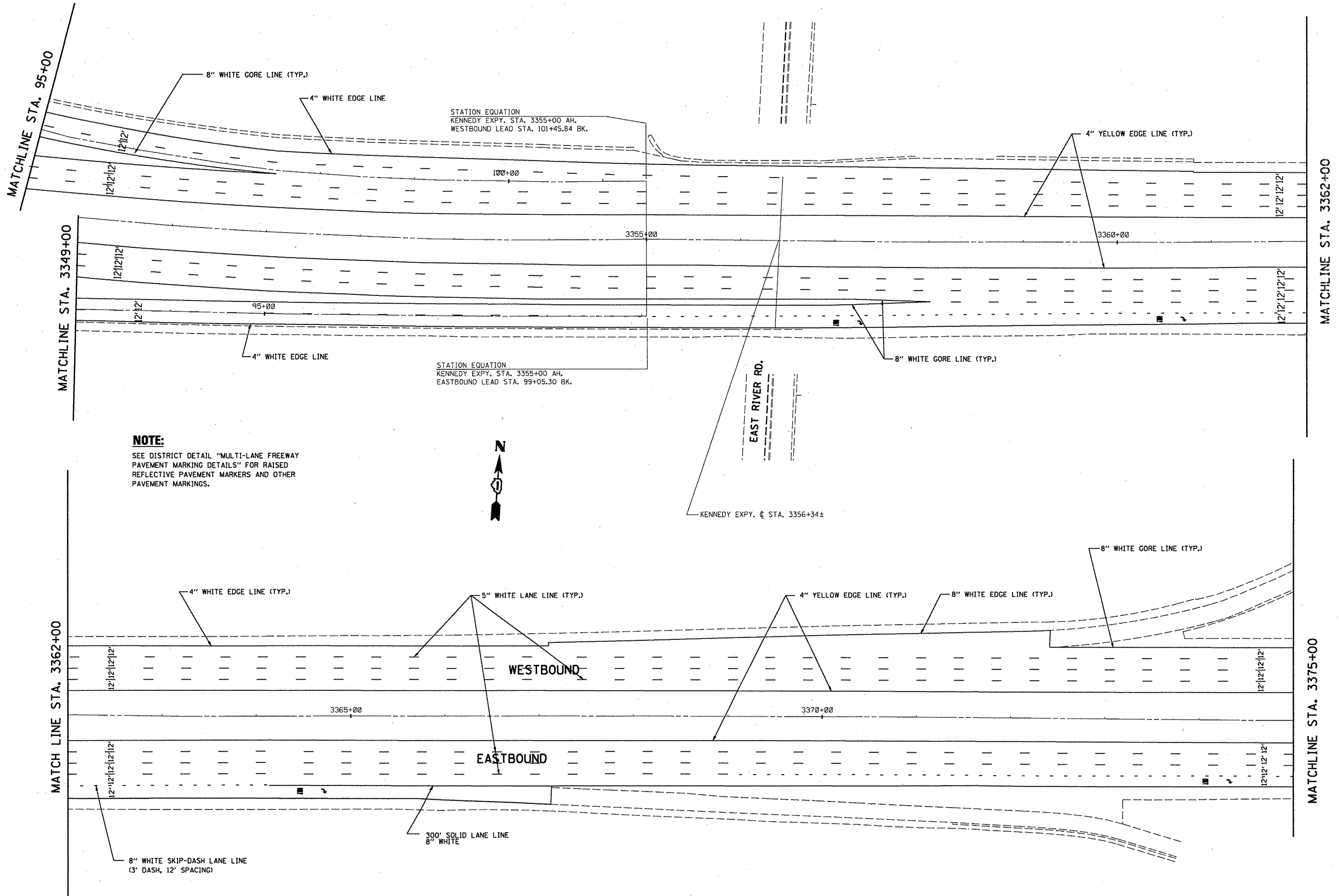
**IMPROVEMENT BEGINS  
E.B. & W.B. STA. 3341+21**

**IMPROVEMENT BEGINS  
WB I-190 STA. 91+00**

**IMPROVEMENT BEGINS  
EB I-190 STA. 91+91**

**NOTE:**  
SEE DISTRICT DETAIL "MULTI-LANE FREEWAY  
PAVEMENT MARKING DETAILS" FOR RAISED  
REFLECTIVE PAVEMENT MARKERS AND OTHER  
PAVEMENT MARKINGS.

FILE NAME = D151111-sht-plan.dgn	USER NAME = nathanbc	DESIGNED -	REVISED -	<b>STATE OF ILLINOIS DEPARTMENT OF TRANSPORTATION</b>	<b>IL. ROUTE 90 (KENNEDY EXPRESSWAY) PROPOSED PLANS &amp; PAVEMENT MARKING PLANS</b>			F.A.I. RTE. 90	SECTION 2011-029-I	COUNTY COOK	TOTAL SHEETS 20	SHEET NO. 4
	PLOT SCALE = 100.0000' / IN.	DRAWN -	REVISED -		SCALE: 1" = 50'	SHEET NO. OF SHEETS	STA. 3339+33 TO STA. 3349+00	CONTRACT NO. 60P32 ILLINOIS FED. AID PROJECT				
PLOT DATE = 4/7/2011	DATE -	REVISED -	REVISED -									



**NOTE:**  
SEE DISTRICT DETAIL "MULTI-LANE FREEWAY PAVEMENT MARKING DETAILS" FOR RAISED REFLECTIVE PAVEMENT MARKERS AND OTHER PAVEMENT MARKINGS.



FILE NAME =	USER NAME = nathanbo
D151111-sh1-plan.dgn	

DESIGNED -	REVISÉ -
DRAWN -	REVISÉ -
CHECKED -	REVISÉ -
DATE -	REVISÉ -

DESIGNED -	REVISÉ -
DRAWN -	REVISÉ -
CHECKED -	REVISÉ -
DATE -	REVISÉ -

**STATE OF ILLINOIS  
DEPARTMENT OF TRANSPORTATION**

**IL. ROUTE 90 (KENNEDY EXPRESSWAY)  
PROPOSED PLANS & PAVEMENT MARKING PLANS**

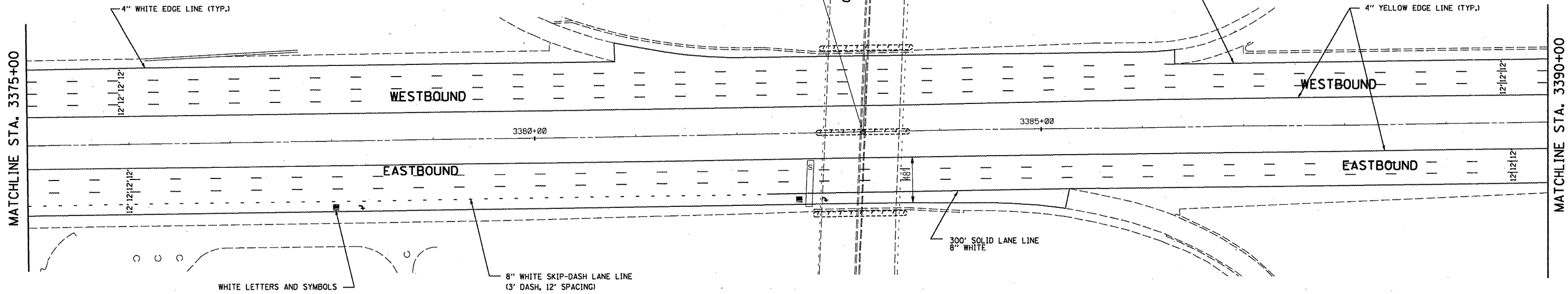
SCALE: 1" = 50'    SHEET NO.    OF    SHEETS    STA. 3349+00    TO    STA. 3375+00

F.A.I. RTE.	SECTION	COUNTY	TOTAL SHEETS	SHEET NO.
90	2011-029-1	COOK	20	5
CONTRACT NO. 60P32				
ILLINOIS FED. AID PROJECT				



KENNEDY EXPY. C STA. 3383+24.29  
 CUMBERLAND AVE. C STA. 117+77.80 (OVERHEAD)

CUMBERLAND AVE.



**NOTE:**  
 SEE DISTRICT DETAIL "MULTI-LANE FREEWAY  
 PAVEMENT MARKING DETAILS" FOR RAISED  
 REFLECTIVE PAVEMENT MARKERS AND OTHER  
 PAVEMENT MARKINGS.

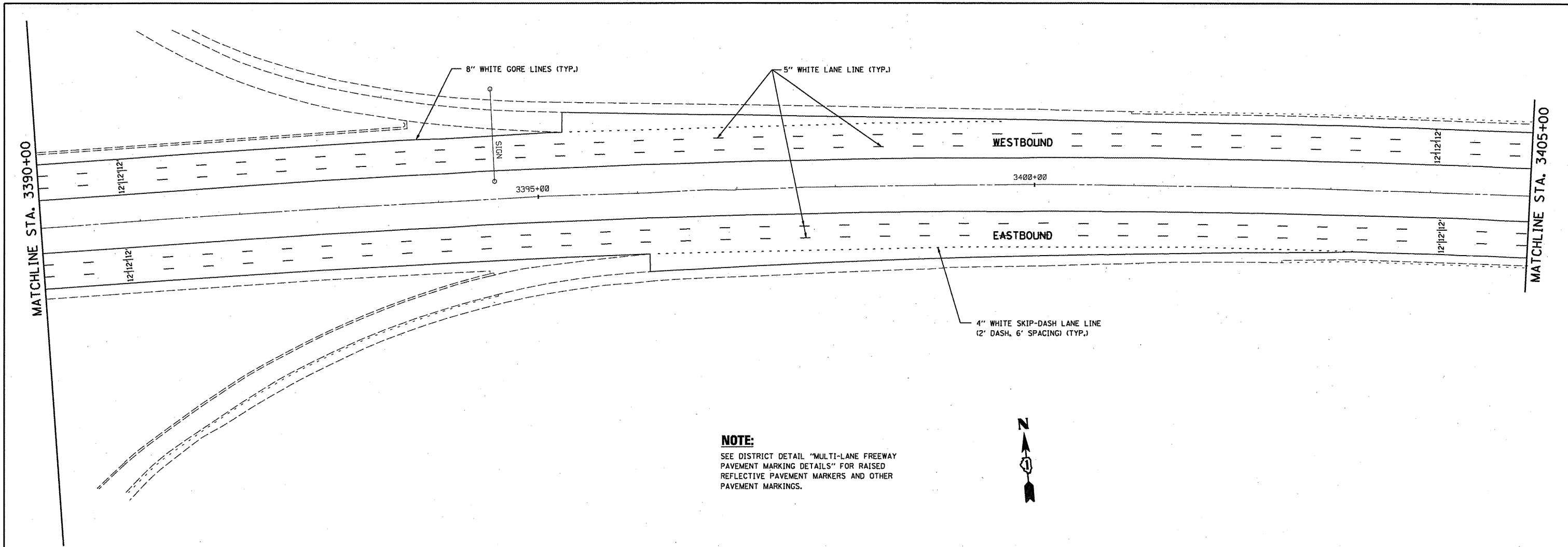
FILE NAME = 0151111-sht-plan.dgn	USER NAME = nathanbc	DESIGNED -	REVISED -
		DRAWN -	REVISED -
	PLOT SCALE = 100.0000' / IN.	CHECKED -	REVISED -
	PLOT DATE = 4/7/2011	DATE -	REVISED -

**STATE OF ILLINOIS  
 DEPARTMENT OF TRANSPORTATION**

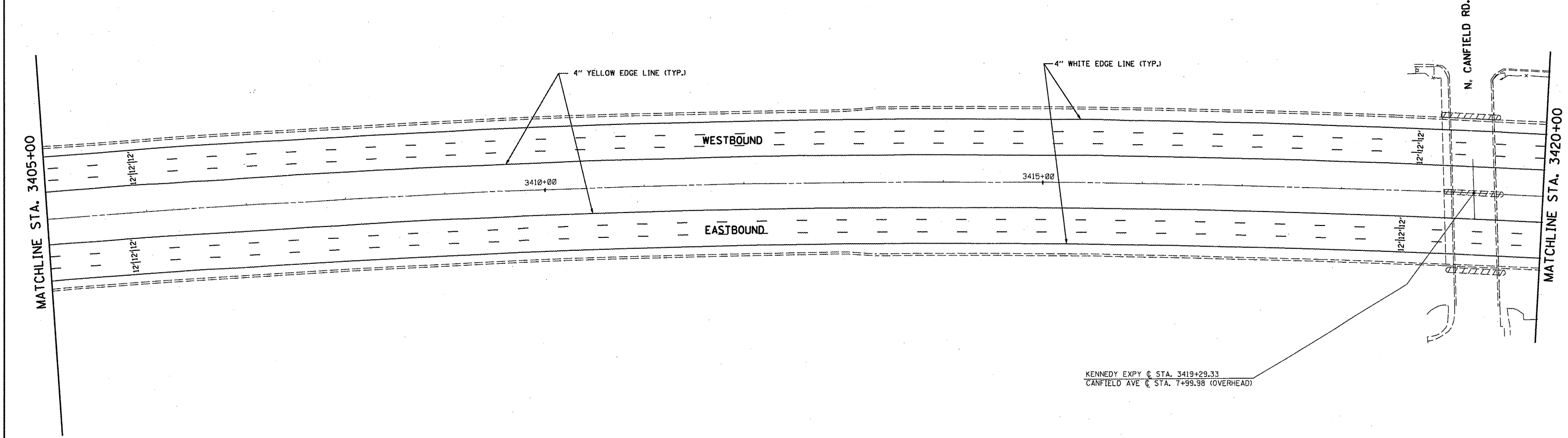
**IL. ROUTE 90 (KENNEDY EXPRESSWAY)  
 PROPOSED PLANS & PAVEMENT MARKING PLANS**

SCALE: 1" = 50'    SHEET NO.    OF    SHEETS    STA. 3375+00    TO STA. 3390+00

F.A.I. RTE.	SECTION	COUNTY	TOTAL SHEETS	SHEET NO.
90	2011-029-I	COOK	20	6
ILLINOIS FED. AID PROJECT			CONTRACT NO. 60P32	

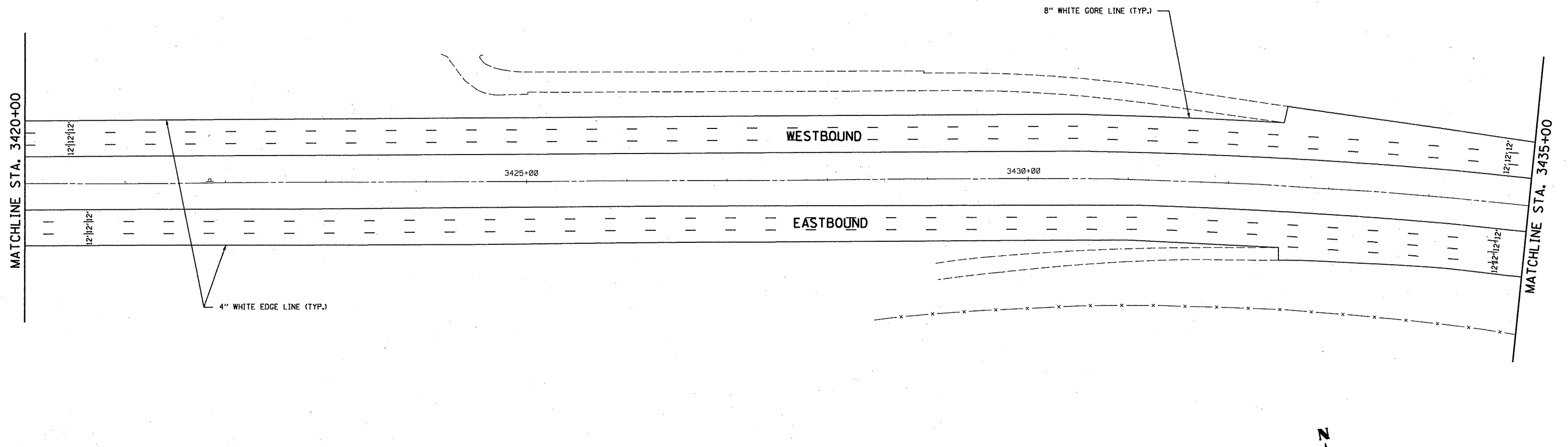


**NOTE:**  
 SEE DISTRICT DETAIL "MULTI-LANE FREEWAY PAVEMENT MARKING DETAILS" FOR RAISED REFLECTIVE PAVEMENT MARKERS AND OTHER PAVEMENT MARKINGS.

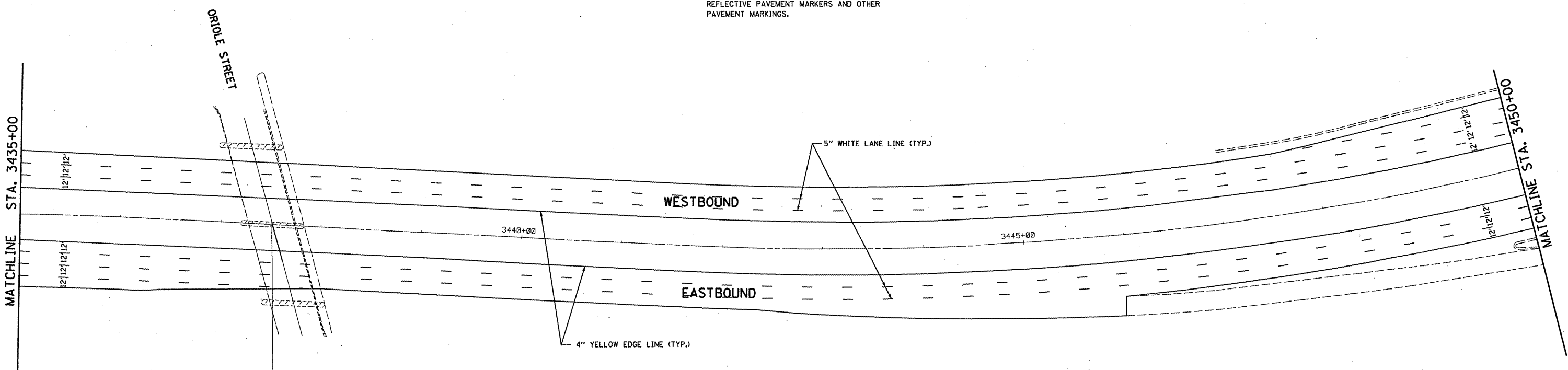


KENNEDY EXPY @ STA. 3419+29.33  
 CANFIELD AVE @ STA. 7+99.98 (OVERHEAD)

FILE NAME = D151111-sht-plan.dgn	USER NAME = nathanbo	DESIGNED -	REVISED -	<b>STATE OF ILLINOIS DEPARTMENT OF TRANSPORTATION</b>	<b>IL. ROUTE 90 (KENNEDY EXPRESSWAY) PROPOSED PLANS &amp; PAVEMENT MARKING PLANS</b>			F.A.I. RTE. 90	SECTION 2011-029-1	COUNTY COOK	TOTAL SHEETS 20	SHEET NO. 7
	PLOT SCALE = 100.0000' / IN.	DRAWN -	REVISED -		SCALE: 1" = 50'			SHEET NO. OF SHEETS		CONTRACT NO. 60P32		
PLOT DATE = 4/7/2011	CHECKED -	REVISED -	REVISED -		STA. 3390+00 TO STA. 3420+00			ILLINOIS FED. AID PROJECT				
	DATE -	REVISED -	REVISED -									



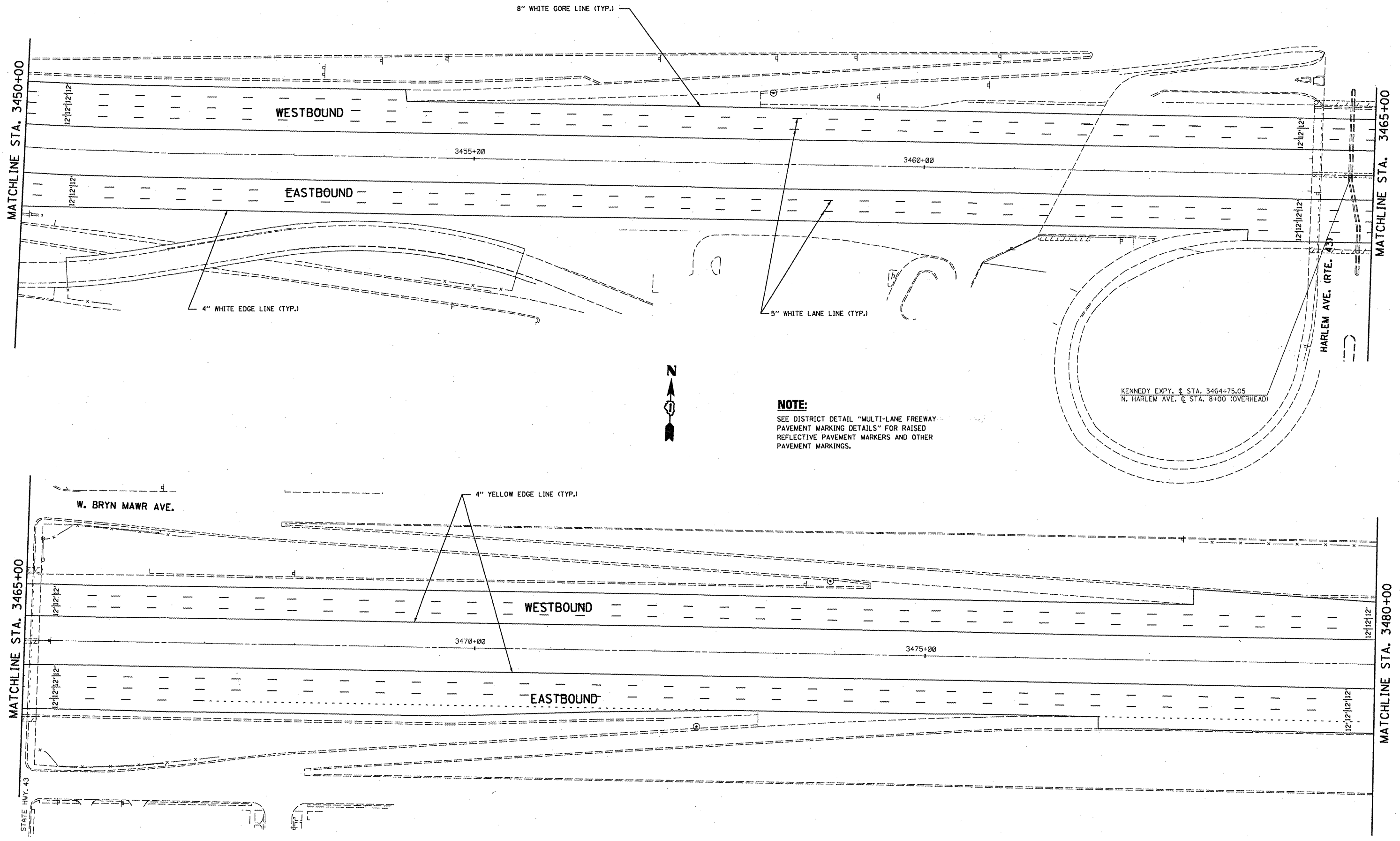
**NOTE:**  
 SEE DISTRICT DETAIL "MULTI-LANE FREEWAY  
 PAVEMENT MARKING DETAILS" FOR RAISED  
 REFLECTIVE PAVEMENT MARKERS AND OTHER  
 PAVEMENT MARKINGS.



KENNEDY EXPY. C STA. 3437+50.20  
 N. ORIOLE AVE. C STA. 8+00 (OVERHEAD)

FILE NAME = 0151111-sht-plan.dgn	USER NAME = netharbo	DESIGNED -	REVISED -	<b>STATE OF ILLINOIS DEPARTMENT OF TRANSPORTATION</b>	<b>IL. ROUTE 90 (KENNEDY EXPRESSWAY) PROPOSED PLANS &amp; PAVEMENT MARKING PLANS</b>			F.A.I. RTE. 90	SECTION 2011-029-1	COUNTY COOK	TOTAL SHEETS 20	SHEET NO. 8
	PLOT SCALE = 100.0000' / IN.	CHECKED -	REVISED -		SCALE: 1" = 50'			CONTRACT NO. 60P32				
PLOT DATE = 4/7/2011	DATE -	REVISED -	REVISED -		SHEET NO. OF SHEETS STA. 3420+00 TO STA. 3450+00			ILLINOIS FED. AID PROJECT				





**NOTE:**  
 SEE DISTRICT DETAIL "MULTI-LANE FREEWAY PAVEMENT MARKING DETAILS" FOR RAISED REFLECTIVE PAVEMENT MARKERS AND OTHER PAVEMENT MARKINGS.

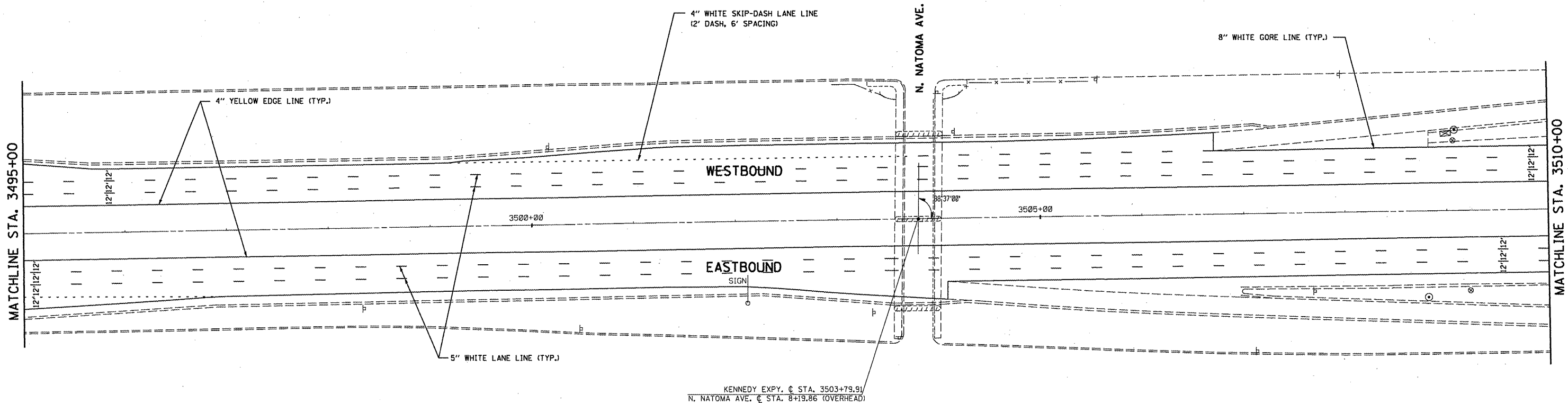
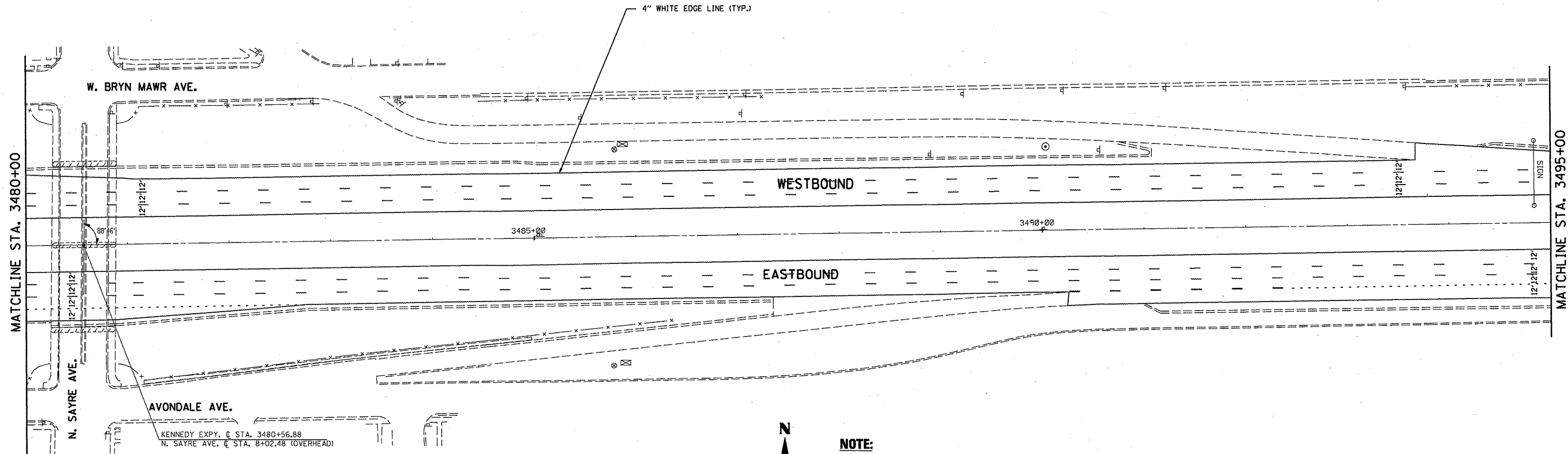
FILE NAME = D151111-sh1-plan.dgn	USER NAME = nathanbo	DESIGNED -	REVISED -
		DRAWN -	REVISED -
	PLOT SCALE = 100.0000' / IN.	CHECKED -	REVISED -
	PLOT DATE = 4/7/2011	DATE -	REVISED -

**STATE OF ILLINOIS  
 DEPARTMENT OF TRANSPORTATION**

**IL ROUTE 90 (KENNEDY EXPRESSWAY)  
 PROPOSED PLANS & PAVEMENT MARKING PLANS**

SCALE: 1" = 50'    SHEET NO.    OF    SHEETS    STA. 3450+00    TO    STA. 3480+00

F.A.I. RTE.	SECTION	COUNTY	TOTAL SHEETS	SHEET NO.
90	2011-029-1	COOK	20	9
CONTRACT NO. 60P32			ILLINOIS FED. AID PROJECT	



FILE NAME = D:\11111-sht-plan\dgn

USER NAME = nathanbc  
 PLOT SCALE = 100.0000' / IN.  
 PLOT DATE = 4/7/2011

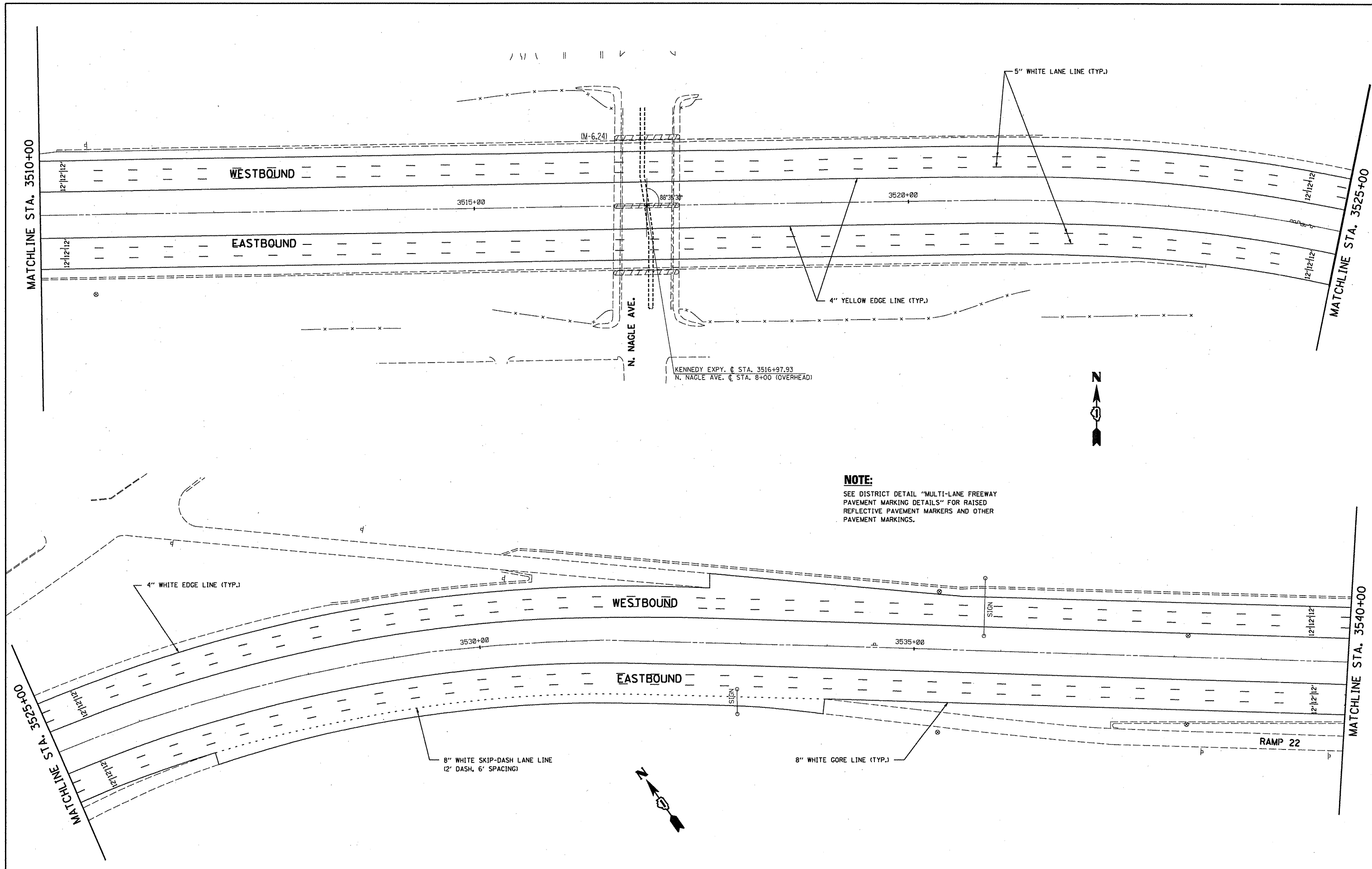
DESIGNED -	REVISED -
DRAWN -	REVISED -
CHECKED -	REVISED -
DATE -	REVISED -

**STATE OF ILLINOIS  
 DEPARTMENT OF TRANSPORTATION**

**IL ROUTE 90 (KENNEDY EXPRESSWAY)  
 PROPOSED PLANS & PAVEMENT MARKING PLANS**

SCALE: 1" = 50'    SHEET NO. OF SHEETS    STA. 3480+00 TO STA. 3510+00

F.A.I. RTE. 90	SECTION 2011-029-1	COUNTY COOK	TOTAL SHEETS 20	SHEET NO. 10
CONTRACT NO. 60P32				
ILLINOIS FED. AID PROJECT				



**NOTE:**  
 SEE DISTRICT DETAIL "MULTI-LANE FREEWAY  
 PAVEMENT MARKING DETAILS" FOR RAISED  
 REFLECTIVE PAVEMENT MARKERS AND OTHER  
 PAVEMENT MARKINGS.

FILE NAME = D151111-sht-plan.dgn	USER NAME = nathanbc	DESIGNED -	REVISED -	<b>STATE OF ILLINOIS DEPARTMENT OF TRANSPORTATION</b>	<b>IL. ROUTE 90 (KENNEDY EXPRESSWAY) PROPOSED PLANS &amp; PAVEMENT MARKING PLANS</b>			F.A.I. RTE. 90	SECTION 2011-029-1	COUNTY COOK	TOTAL SHEETS 20	SHEET NO. 11
	PLOT SCALE = 100.0000' / IN.	DRAWN -	REVISED -		SCALE: 1" = 50'			CONTRACT NO. 60P32				
	PLOT DATE = 4/7/2011	CHECKED -	REVISED -		SHEET NO. OF SHEETS			ILLINOIS FED. AID PROJECT				

MATCHLINE STA. 3540+00

MATCHLINE STA. 3555+00

MATCHLINE STA. 3555+00

MATCHLINE STA. 3570+00

5" WHITE LANE LINE (TYP.)

4" YELLOW EDGE LINE (TYP.)

WESTBOUND

EASTBOUND

C.T.A. TRACK AREA

KENNEDY EXPY. @ STA. 3545+00  
AUSTIN AVE. PED @ STA. 1+54 (OVERHEAD)

4" WHITE EDGE LINE (TYP.)

8" WHITE GORE LINE (TYP.)

4" WHITE SKIP-DASH LANE LINE  
(2' DASH, 6' SPACING)

WESTBOUND

EASTBOUND

C.T.A. TRACK AREA

W. FOSTER AVE.

KENNEDY EXPY. @ STA. 3567+73.32  
W. FOSTER AVE. @ STA. 8+00 (OVERHEAD)

**NOTE:**

SEE DISTRICT DETAIL "MULTI-LANE FREEWAY  
PAVEMENT MARKING DETAILS" FOR RAISED  
REFLECTIVE PAVEMENT MARKERS AND OTHER  
PAVEMENT MARKINGS.

FILE NAME = 0151111-shr-plan.dgn	USER NAME = nathanbc	DESIGNED -	REVISED -
		DRAWN -	REVISED -
		CHECKED -	REVISED -
		DATE -	REVISED -

PLOT SCALE = 100.0000' / IN.	
PLOT DATE = 4/7/2011	

DESIGNED -	REVISED -
DRAWN -	REVISED -
CHECKED -	REVISED -
DATE -	REVISED -

**STATE OF ILLINOIS  
DEPARTMENT OF TRANSPORTATION**

**IL. ROUTE 90 (KENNEDY EXPRESSWAY)  
PROPOSED PLANS & PAVEMENT MARKING PLANS**

SCALE: 1"= 50' SHEET NO. OF SHEETS STA. 3540+00 TO STA. 3570+00

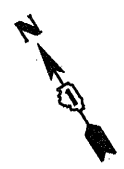
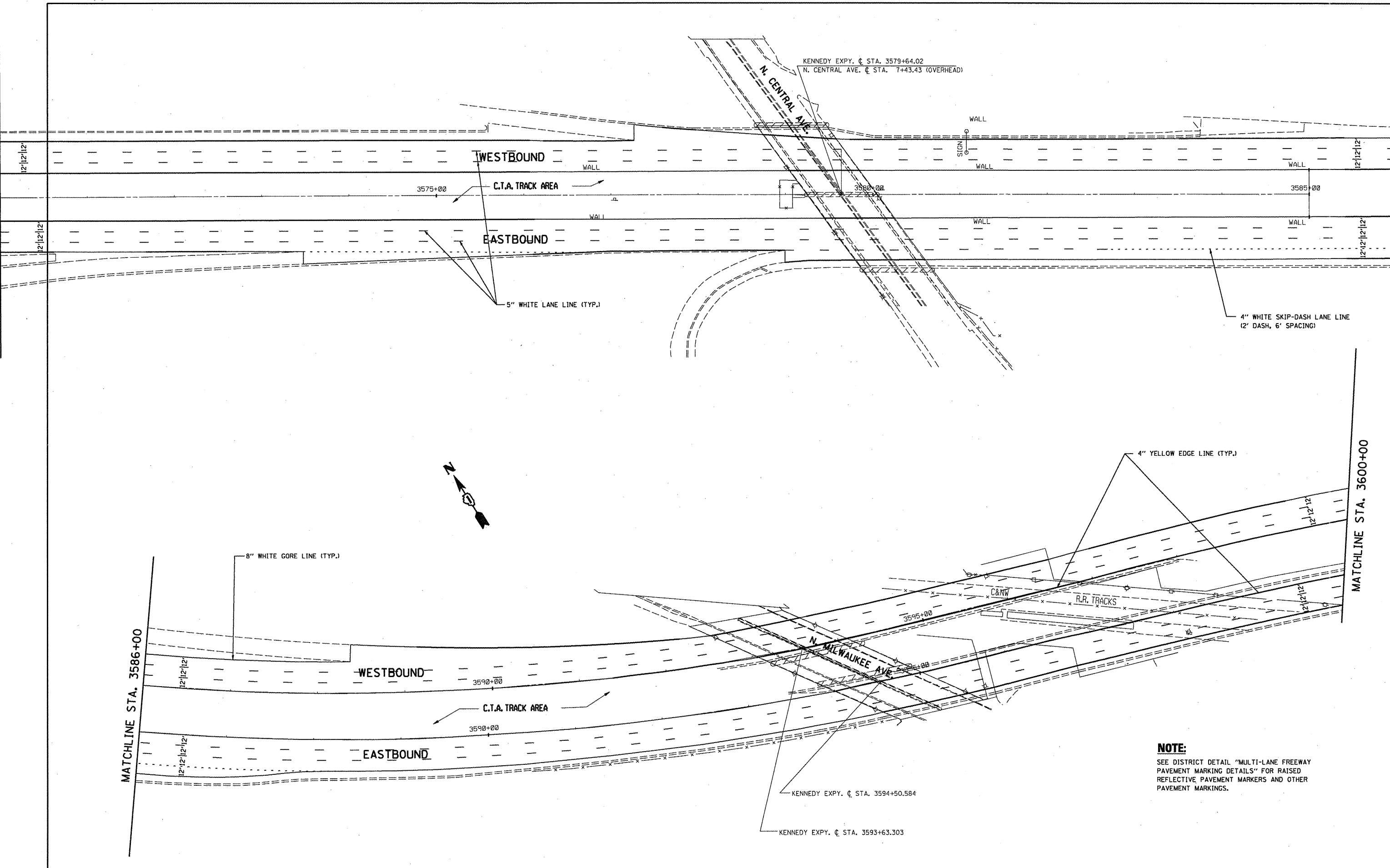
F.A.I. RTE.	SECTION	COUNTY	TOTAL SHEETS	SHEET NO.
90	2011-029-I	COOK	20	12
CONTRACT NO. 60P32			ILLINOIS FED. AID PROJECT	

MATCHLINE STA. 3570+00

MATCHLINE STA. 3586+00

MATCHLINE STA. 3600+00

MATCHLINE STA. 3586+00



**NOTE:**  
SEE DISTRICT DETAIL "MULTI-LANE FREEWAY PAVEMENT MARKING DETAILS" FOR RAISED REFLECTIVE PAVEMENT MARKERS AND OTHER PAVEMENT MARKINGS.

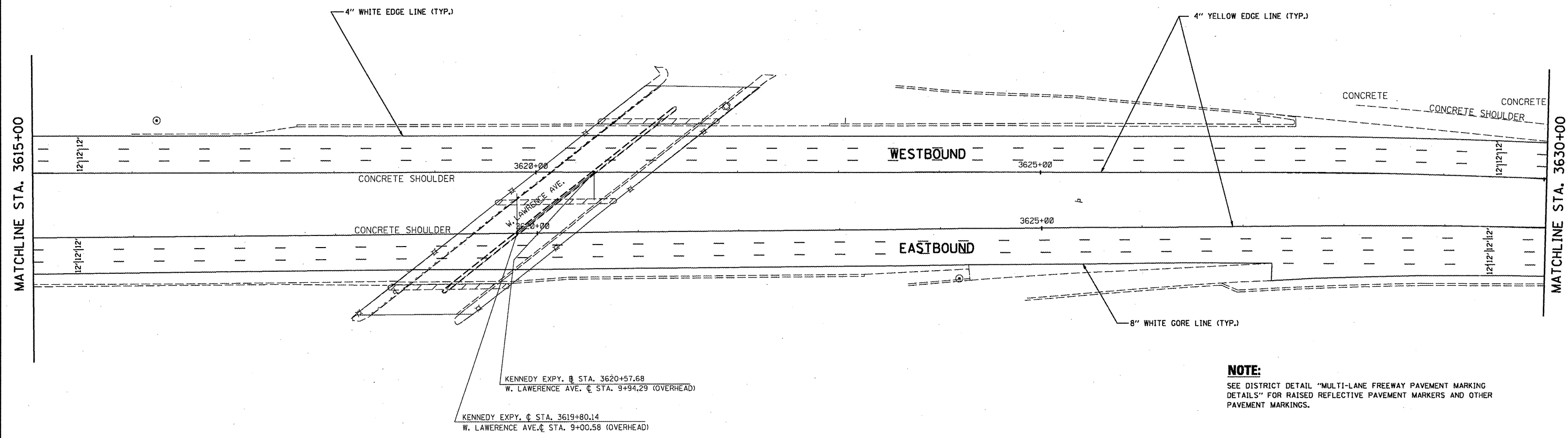
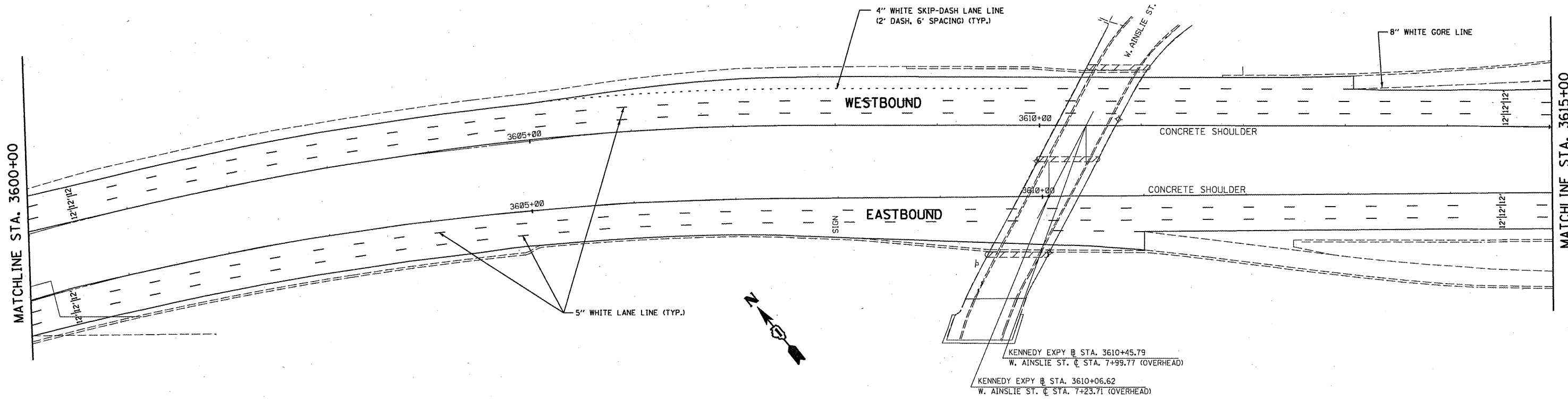
FILE NAME =	USER NAME = nathanbc
D:\11111-sht-plan.dgn	
PLOT SCALE = 100.0000' / IN.	
PLOT DATE = 4/7/2011	

DESIGNED -	REVISED -
DRAWN -	REVISED -
CHECKED -	REVISED -
DATE -	REVISED -

**STATE OF ILLINOIS  
DEPARTMENT OF TRANSPORTATION**

<b>IL ROUTE 90 (KENNEDY EXPRESSWAY) PROPOSED PLANS &amp; PAVEMENT MARKING PLANS</b>			
SCALE: 1" = 50'	SHEET NO. OF	SHEETS	STA. 3570+00 TO STA. 3600+00

F.A.I. RTE.	SECTION	COUNTY	TOTAL SHEETS	SHEET NO.
90	2011-029-1	COOK	20	13
CONTRACT NO. 60P32				
[ILLINOIS] FED. AID PROJECT				



**NOTE:**  
SEE DISTRICT DETAIL "MULTI-LANE FREEWAY PAVEMENT MARKING DETAILS" FOR RAISED REFLECTIVE PAVEMENT MARKERS AND OTHER PAVEMENT MARKINGS.

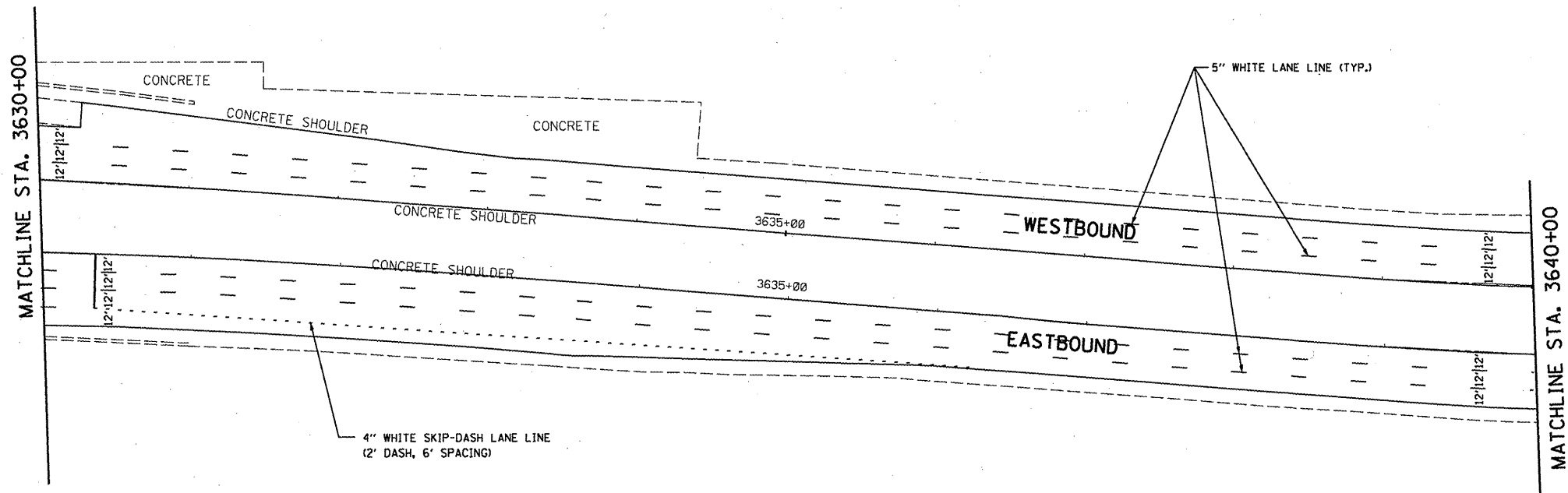
FILE NAME =	USER NAME = notherbc
D:\51111-sht-plan.dgn	
PLOT SCALE = 100.0000' / IN.	
PLOT DATE = 4/7/2011	

DESIGNED -	REVISED -
DRAWN -	REVISED -
CHECKED -	REVISED -
DATE -	REVISED -

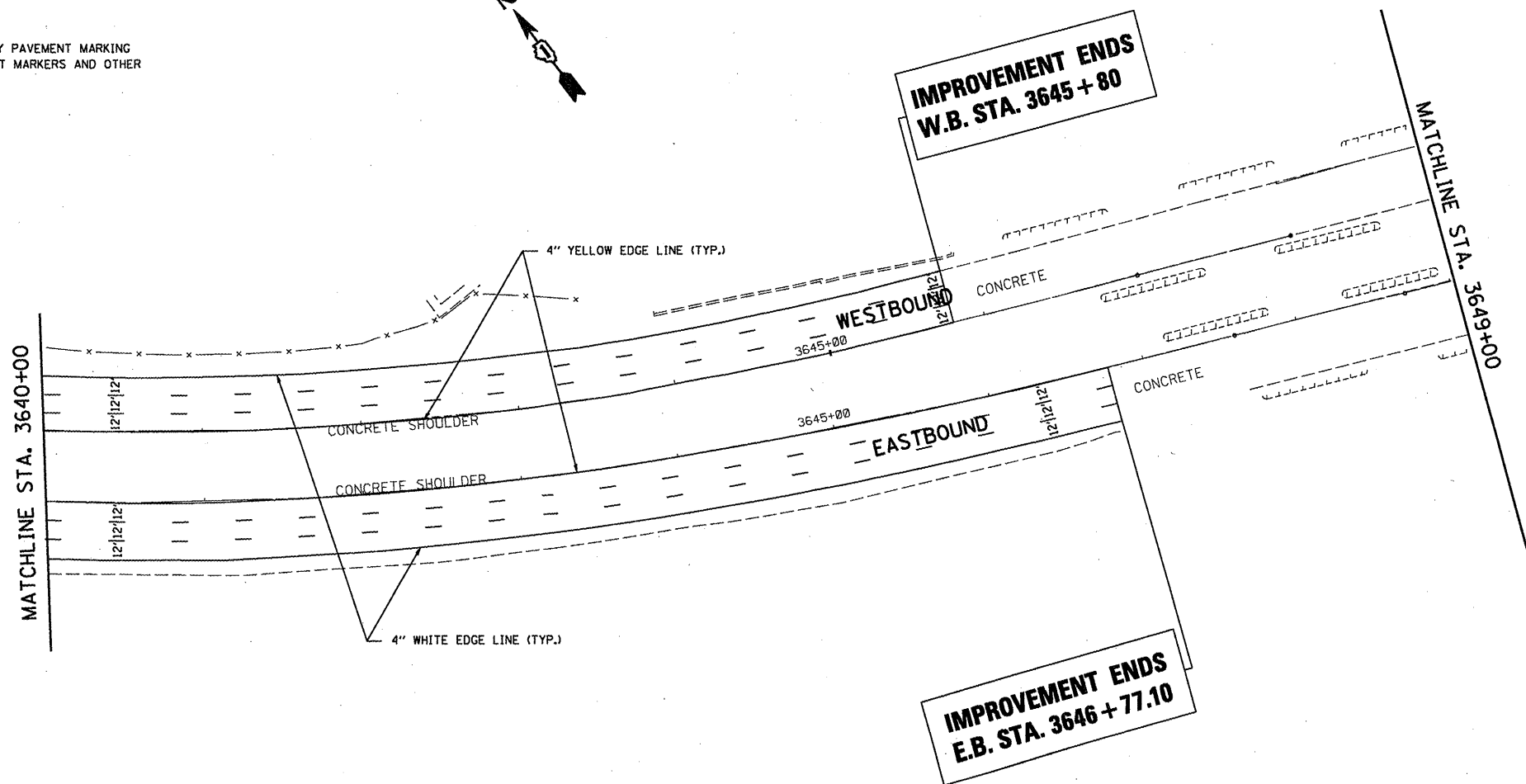
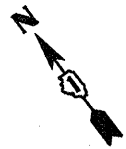
**STATE OF ILLINOIS  
DEPARTMENT OF TRANSPORTATION**

<b>IL. ROUTE 90 (KENNEDY EXPRESSWAY) PROPOSED PLANS &amp; PAVEMENT MARKING PLANS</b>			
SCALE: 1" = 50'	SHEET NO. OF SHEETS	STA. 3600+00 TO STA. 3630+00	

F.A.I. RTE. 90	SECTION 2011-029-1	COUNTY COOK	TOTAL SHEETS 20	SHEET NO. 14
ILLINOIS FED. AID PROJECT				
CONTRACT NO. 60P32				



**NOTE:**  
SEE DISTRICT DETAIL "MULTI-LANE FREEWAY PAVEMENT MARKING DETAILS" FOR RAISED REFLECTIVE PAVEMENT MARKERS AND OTHER PAVEMENT MARKINGS.



FILE NAME = D:\151111-sht-plan.dgn	USER NAME = nathanbo	DESIGNED -	REVISED -
		DRAWN -	REVISED -
		CHECKED -	REVISED -
		DATE -	REVISED -

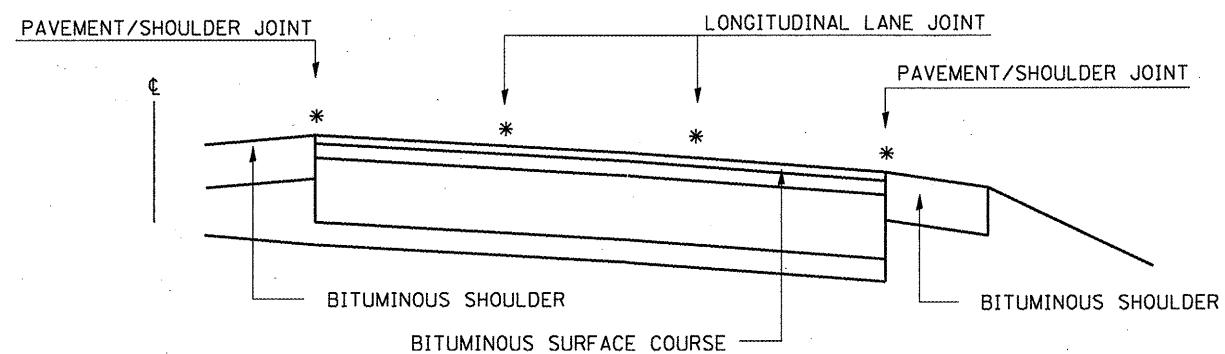
PLOT SCALE = 100.0000' / IN.	
PLOT DATE = 4/7/2011	

**STATE OF ILLINOIS  
DEPARTMENT OF TRANSPORTATION**

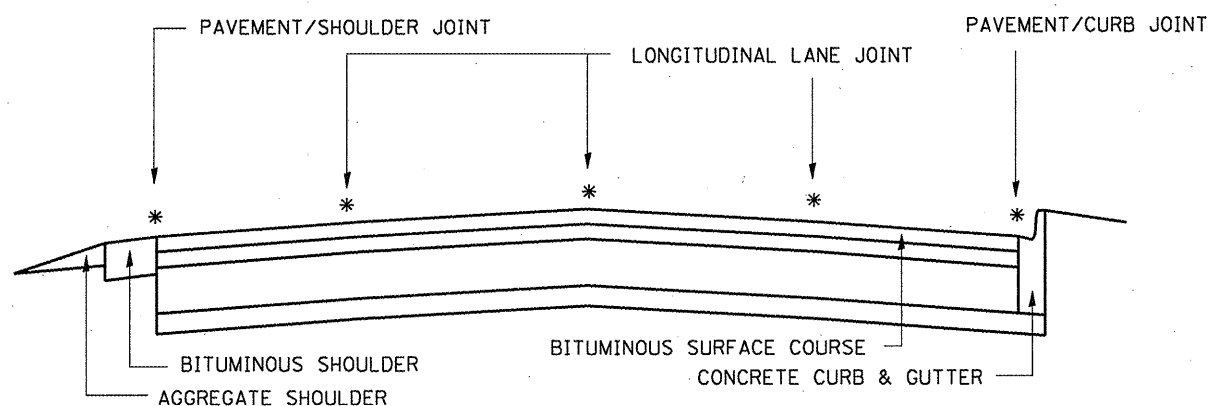
**IL. ROUTE 90 (KENNEDY EXPRESSWAY)  
PROPOSED PLANS & PAVEMENT MARKING PLANS**

SCALE: 1" = 50'    SHEET NO. OF SHEETS    STA. 3630+00 TO STA. 3649+00

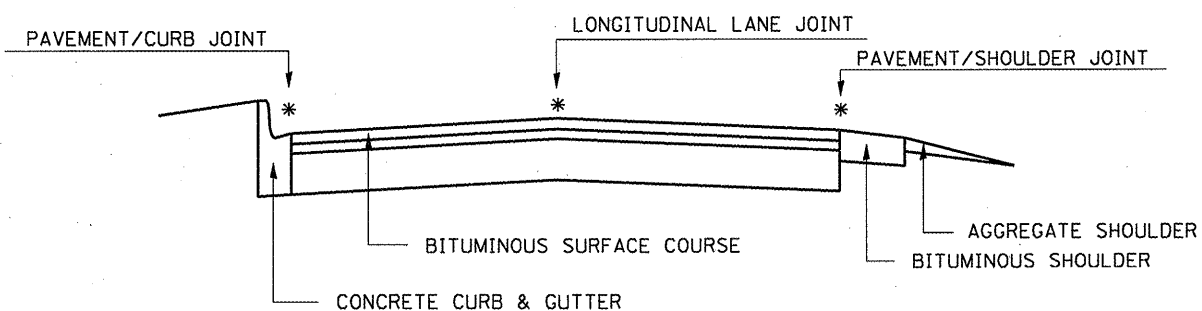
F.A.I. RTE.	SECTION	COUNTY	TOTAL SHEETS	SHEET NO.
90	2011-029-1	COOK	20	15
CONTRACT NO. 60P32				
ILLINOIS FED. AID PROJECT				



MULTI-LANE DIVIDED PAVEMENT



MULTI-LANE UNDIVIDED PAVEMENT

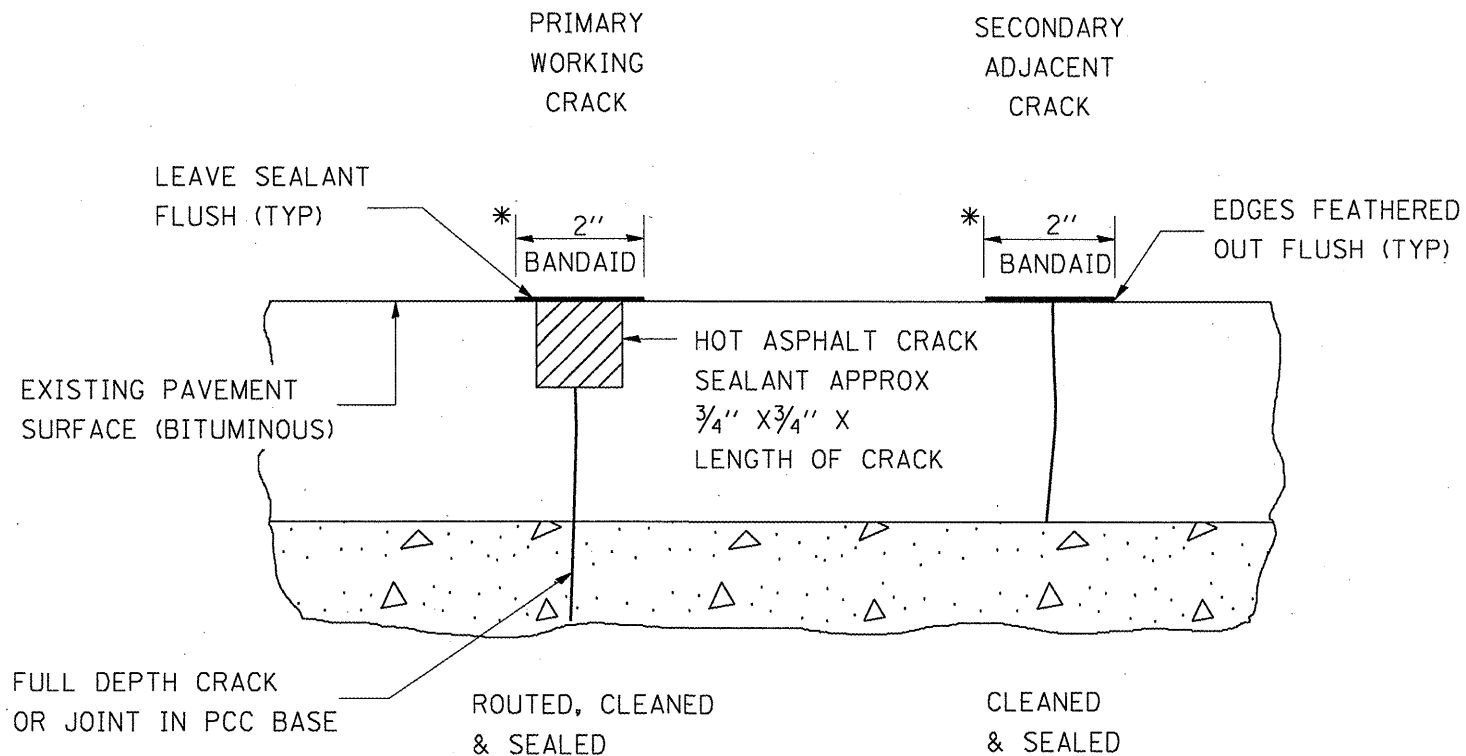


TWO-LANE PAVEMENT

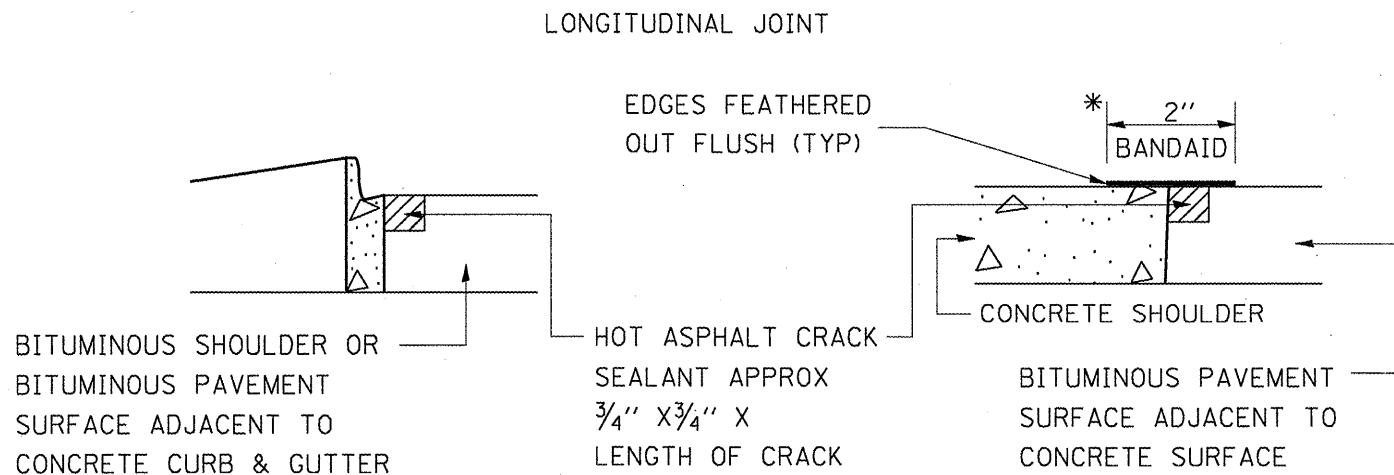
PROPOSED TRANSVERSE CRACK ROUTING (PAVEMENT) & CRACK FILLING LOCATIONS NOT SHOWN

\* PROPOSED LONGITUDINAL CRACK ROUTING (PAVEMENT) & CRACK FILLING LOCATIONS

GENERAL EXISTING TYPICAL SECTIONS



\* IN ALL LOCATIONS WHERE THE LONGITUDINAL CRACK CONFLICTS WITH EXISTING PAVEMENT MARKINGS (EITHER EDGE LINE OR LANE LINE) THE CRACK SHALL BE ROUTED & THE RESULTING RESERVOIR FILLED WITH SEALANT. HOWEVER, THE 2" BANDAID SEALANT STRIP SHALL BE DELETED TO PREVENT UNNECESSARY DAMAGE TO THE EXISTING PAVEMENT MARKINGS. ALL DAMAGES TO EXISTING PAVEMENT MARKINGS & RAISED REFLECTIVE PAVEMENT MARKERS IN EXCESS OF THAT CAUSED BY THE ROUTING OPERATION SHALL BE REPLACED AT THE EXPENSE OF THE CONTRACTOR.



CRACK & JOINT SEALING DETAIL

FILE NAME =	USER NAME = nathanbo	DESIGNED -	REVISED -
D151111-sht-plan.dgn		DRAWN -	REVISED -
	PLOT SCALE = 100.0000' / IN.	CHECKED -	REVISED -
	PLOT DATE = 4/7/2011	DATE -	REVISED -

STATE OF ILLINOIS  
DEPARTMENT OF TRANSPORTATION

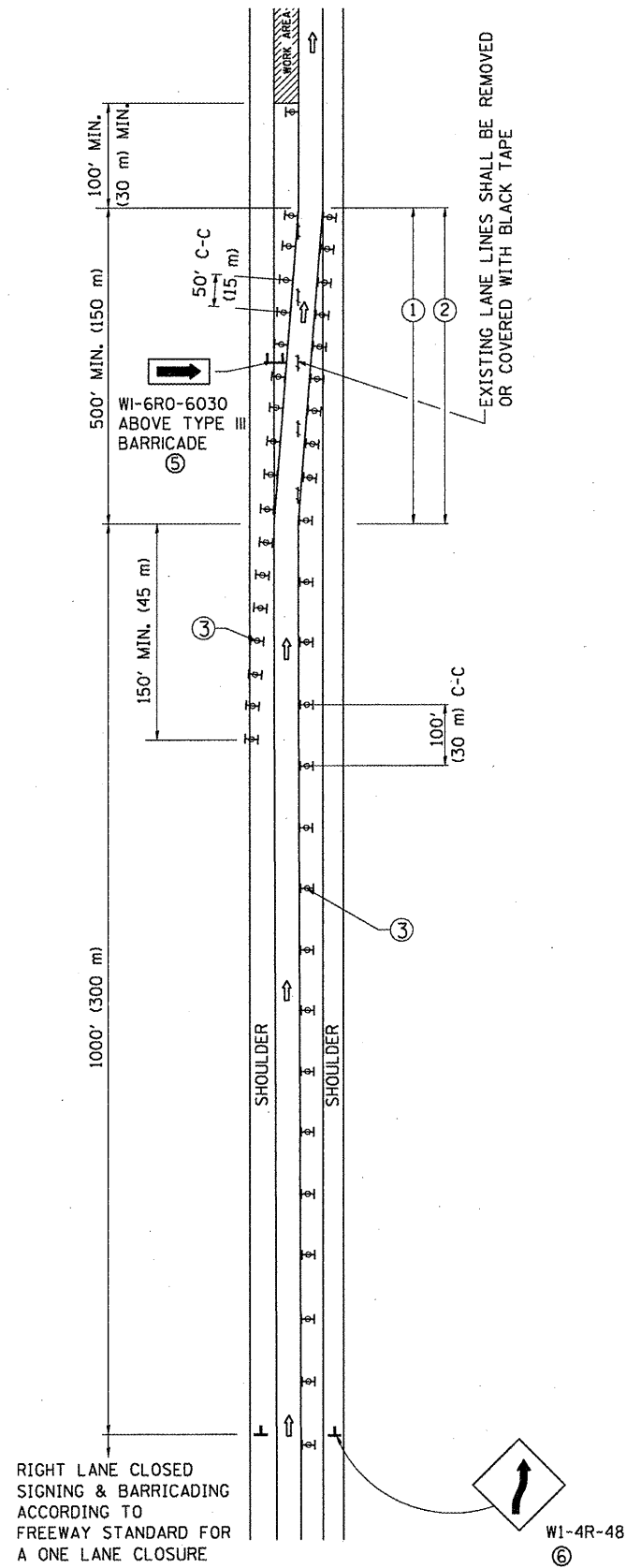
CRACK & JOINT SEALING DETAIL

SCALE: SHEET NO. OF SHEETS STA. TO STA.

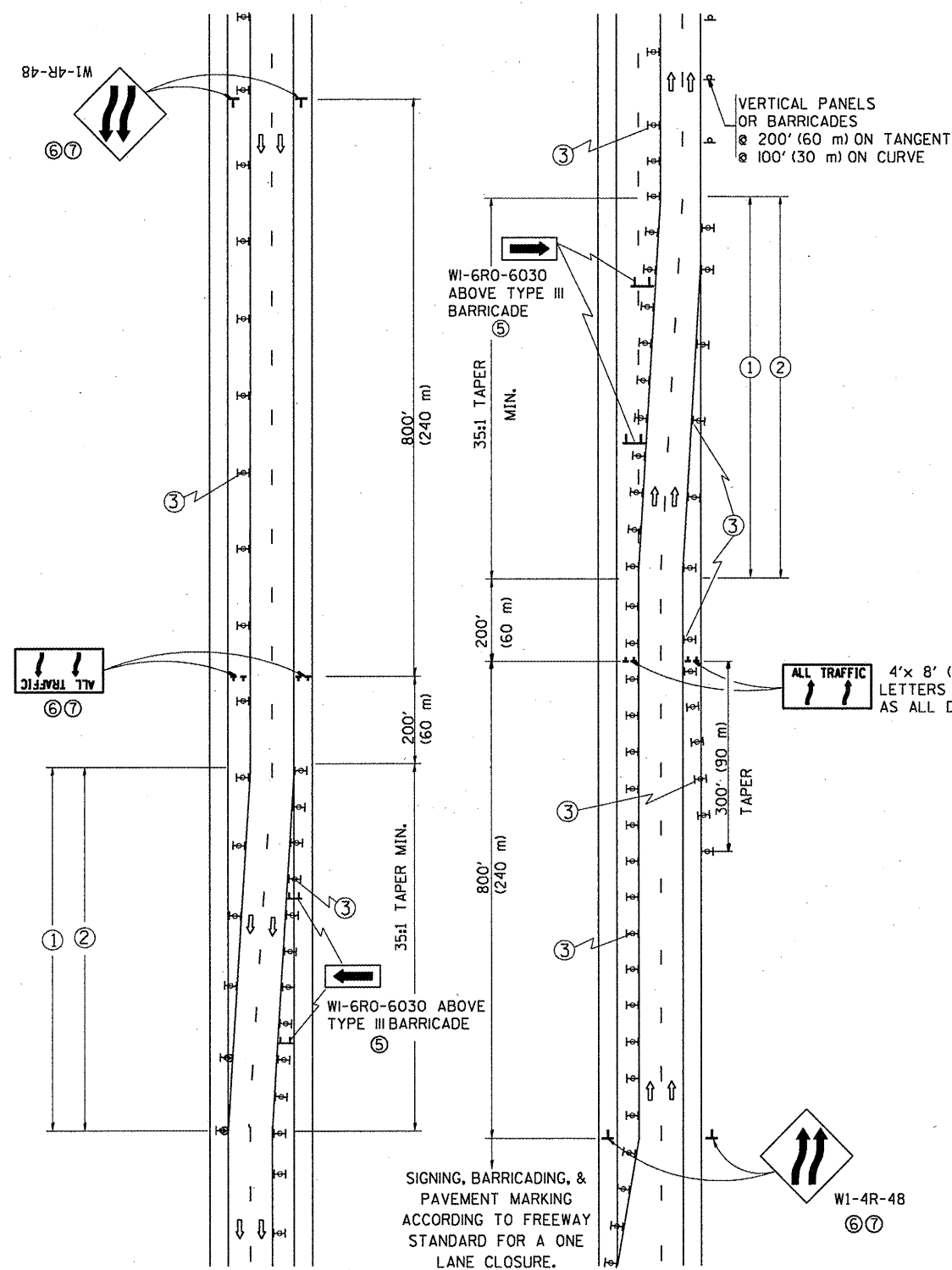
F.A.I. RTE.	SECTION	COUNTY	TOTAL SHEETS	SHEET NO.
90	2011-029-1	COOK	20	16
CONTRACT NO. 60P32				
ILLINOIS FED. AID PROJECT				



# SINGLE LANE WEAVE



# MULTI-LANE WEAVE

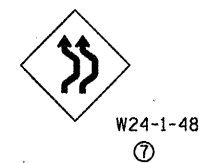


### GENERAL NOTES

- EXISTING CONFLICTING PAVEMENT MARKING LINES SHALL BE REMOVED. PAVEMENT MARKING REMOVAL SHALL NOT BE REQUIRED FOR SINGLE LANE WEAVES UNDER 24 HOURS IN DURATION.
- CONTINUOUS REFLECTIVE TEMPORARY PAVEMENT MARKING TAPE SHALL BE PLACED THROUGHOUT THE TAPER AND FOR 300' (90 m) ALONG SIDE THE WORK AREA WHERE THE CLOSURE TIME IS GREATER THAN FOURTEEN DAYS. THE LEFT EDGE LINE SHALL BE YELLOW AND THE RIGHT EDGE LINE SHALL BE WHITE. FOR MULTI-LANE WEAVES LANE LINES SHALL BE 5 INCH, 10'-30' (3 m-9 m) SKIP DASH, WHITE.
- PLASTIC DRUMS WITH STEADY BURN LIGHTS AT 50' (15 m) C-C SPACING IN TAPERS AND 100' (30 m) C-C SPACING IN TANGENTS.
- ALL SIGNS SHALL BE POST MOUNTED IF THE CLOSURE TIME EXCEEDS FOUR DAYS.
- IF A TYPE III BARRICADE WITH AN ATTACHED SIGN PANEL WHICH MEETS NCHRP 350 IS NOT AVAILABLE, THE SIGNS MAY BE MOUNTED ON NCHRP 350 TEMPORARY SIGN SUPPORTS. TYPE III BARRICADES MAY BE OMITTED FOR SINGLE-LANE WEAVES UNDER 24-HOURS IN DURATION. W1-6 SIGNS WILL STILL BE REQUIRED. IF THE WIDTH OF OFFSET IS LESS THAN 6' THEN THE TYPE III BARRICADE WITH ATTACHED ARROW SIGN PANEL CAN BE ELIMINATED IN THE TAPER AREAS.
- WHEN THE LENGTH OF THE SHIFTED SEGMENT (DISTANCE BETWEEN WEAVE POINTS) IS LESS THAN 1500', DOUBLE REVERSE CURVE SIGNS (W24-1) SHOULD BE USED INSTEAD OF THE REVERSE CURVE (W1-4) SIGNS. ARROWS ON THE 4'X8' "ALL TRAFFIC" SIGNS SHALL BE THE SAME SHAPE.
- THE NUMBER OF ARROWS ON THESE SIGNS SHALL MATCH THE NUMBER OF LANES OPEN TO TRAFFIC.

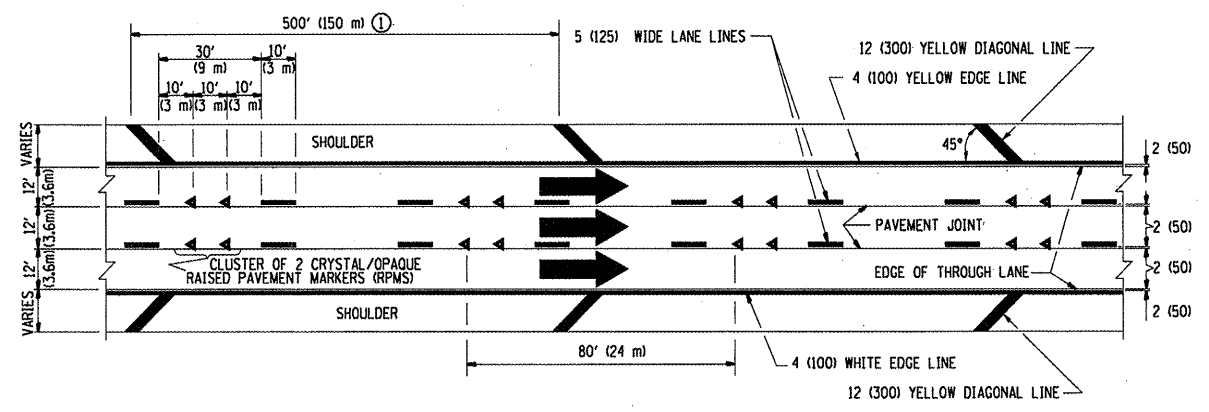
### SYMBOLS

- ↑ DIRECTION OF TRAFFIC
- ▨ WORK AREA
- ┆ SIGN ON PORTABLE OR PERMANENT SUPPORT
- ⊞ TYPE II BARRICADE OR DRUM WITH MONO-DIRECTIONAL STEADY BURNING LIGHT



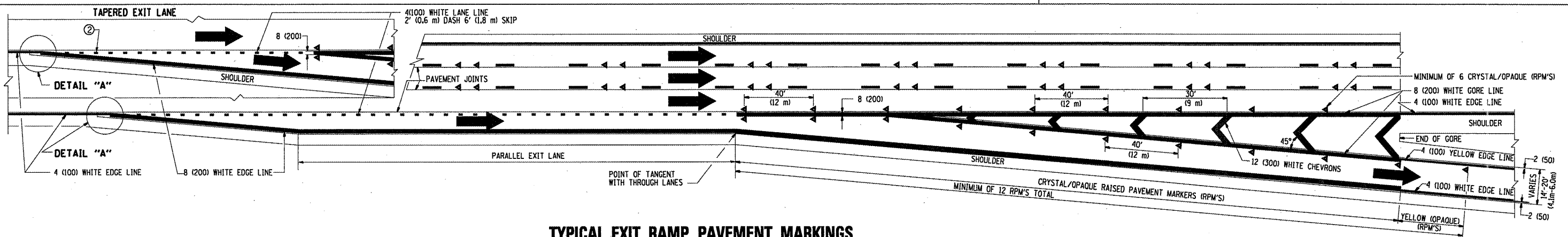
ALL DIMENSIONS ARE IN INCHES (MILLIMETERS) UNLESS OTHERWISE SHOWN

FILE NAME =	USER NAME = nathanbc	DESIGNED - DWS	REVISED - JAF 01-03	<b>STATE OF ILLINOIS DEPARTMENT OF TRANSPORTATION</b>	<b>TRAFFIC CONTROL DETAILS FOR FREEWAY SINGLE &amp; MULTI-LANE WEAVE</b>			F.A.I. RTE.	SECTION	COUNTY	TOTAL SHEETS	SHEET NO.
c:\prj_work\pwwdot\nathanbc\d0264861\01s05.dgn		DRAWN -	REVISED - JAF 02-06		90	2011-029-I	COOK	20	17			
PLOT SCALE = 100.0000' / IN.		CHECKED -	REVISED - SPB 01-07		<b>TC-09</b>			<b>CONTRACT NO. 60P32</b>				
PLOT DATE = 4/7/2011		DATE - 02-07	REVISED - SPB 12-09		SCALE: NONE			SHEET NO. 1 OF 1 SHEETS STA. TO STA.		FED. ROAD DIST. NO. 1 ILLINOIS FED. AID PROJECT		

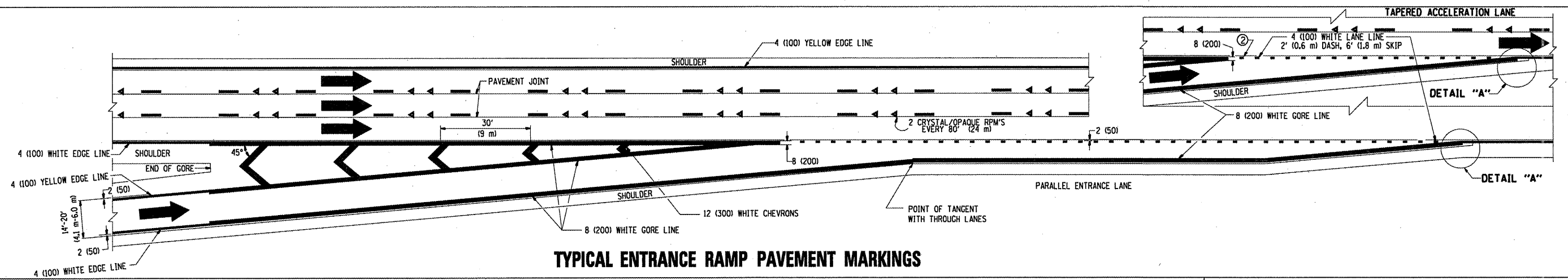


**TYPICAL EDGE LINES & LANE LINES**

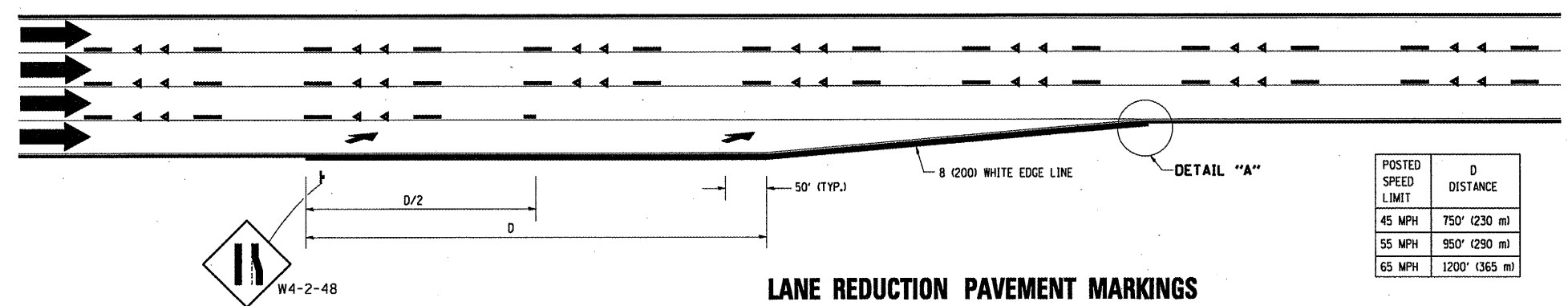
- PAVEMENT MARKING MATERIALS**
1. THERMO PLASTIC PAVEMENT MARKING LINE SHALL BE USED FOR THE EDGE LINES, GORE LINES, AND DIAGONAL LINES ON BITUMINOUS PAVEMENT ONLY.
  2. PREFORMED PLASTIC TYPE B PAVEMENT MARKING LINE SHALL BE USED FOR ALL LANE LINES ON BITUMINOUS PAVEMENT.
  3. POLYUREA PAVEMENT MARKING SHALL BE USED FOR ALL MARKINGS ON PCC.



**TYPICAL EXIT RAMP PAVEMENT MARKINGS**

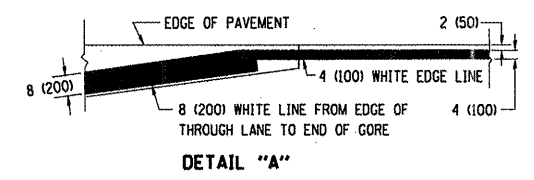


**TYPICAL ENTRANCE RAMP PAVEMENT MARKINGS**

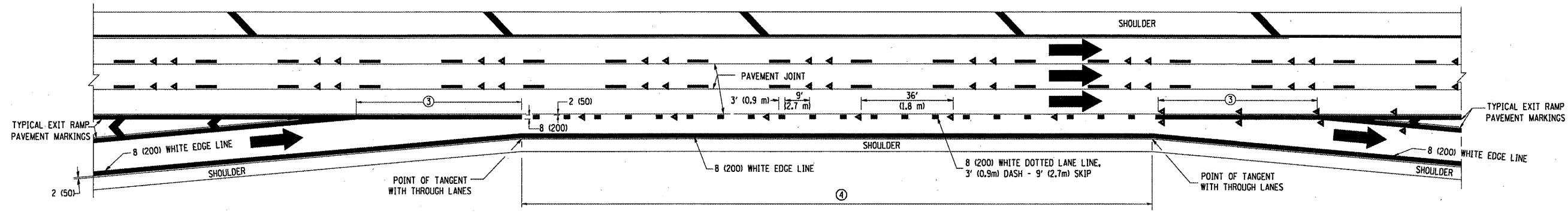


**LANE REDUCTION PAVEMENT MARKINGS**

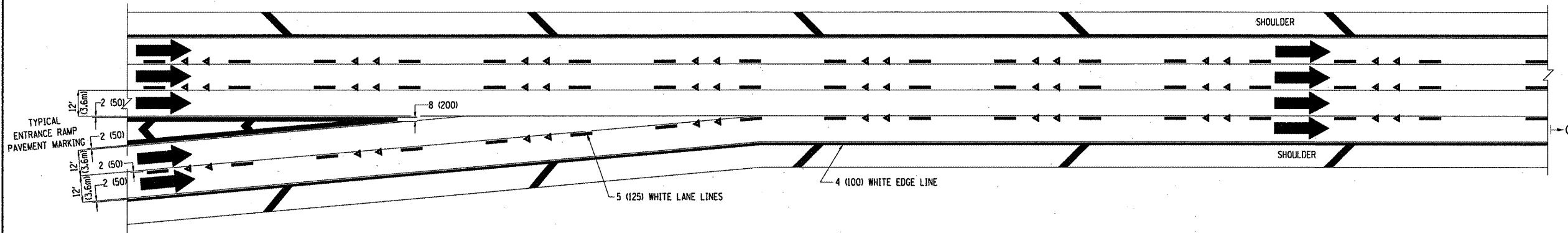
POSTED SPEED LIMIT	D DISTANCE
45 MPH	750' (230 m)
55 MPH	950' (290 m)
65 MPH	1200' (365 m)



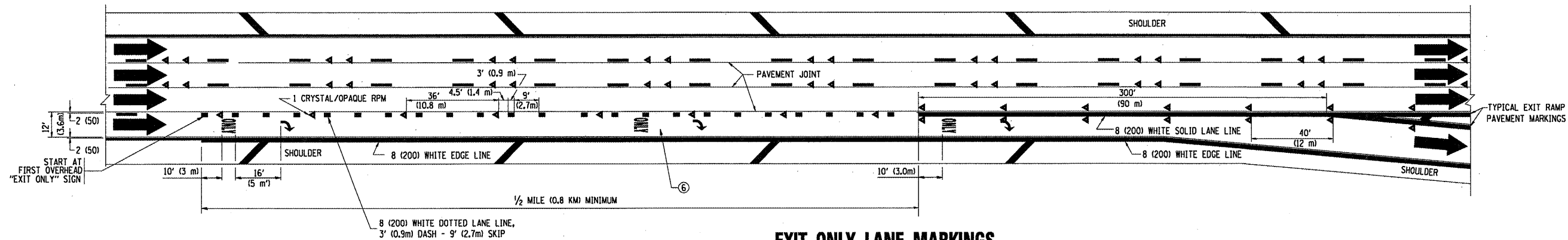
- NOTES:**
- ① THE DIAGONAL LINES SHALL BE SPACED AT 40' (12 m) C-C ACROSS ALL STRUCTURES WHICH ARE 500' (150 m) OR LESS IN LENGTH. THE DIAGONAL LINES ARE NOT REQUIRED ON SHOULDERS WHICH ARE 6' (1.8 m) OR LESS IN WIDTH.
  - ② 4" (2' DASH, 6' SKIP) MARKING ON TAPERED ENTRANCE AND EXIT RAMP SHALL BE OMITTED ON TANGENT SECTIONS.



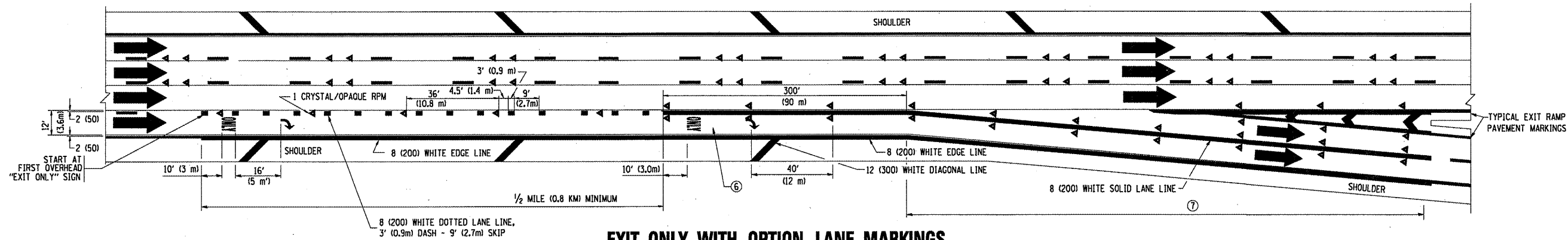
AUXILIARY LANE MARKINGS



TWO LANE ENTRANCE RAMP WITH MERGE MARKINGS



EXIT ONLY LANE MARKINGS

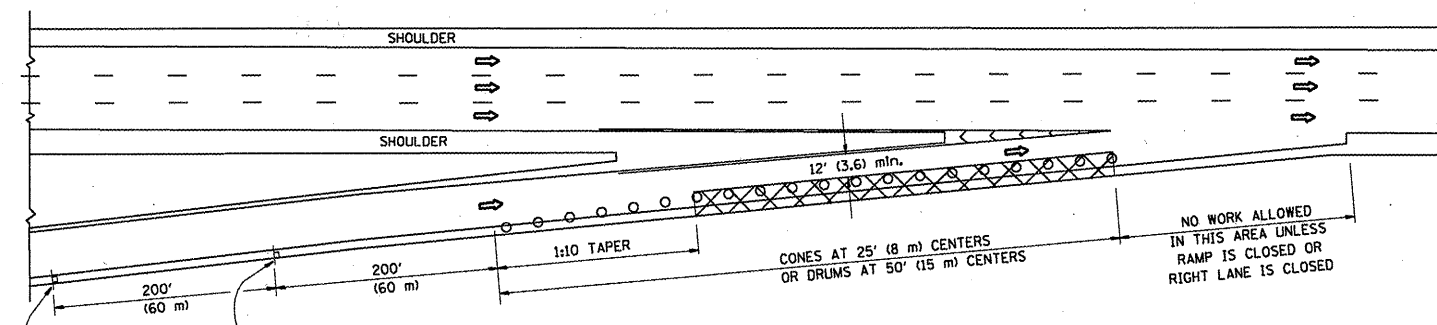


EXIT ONLY WITH OPTION LANE MARKINGS

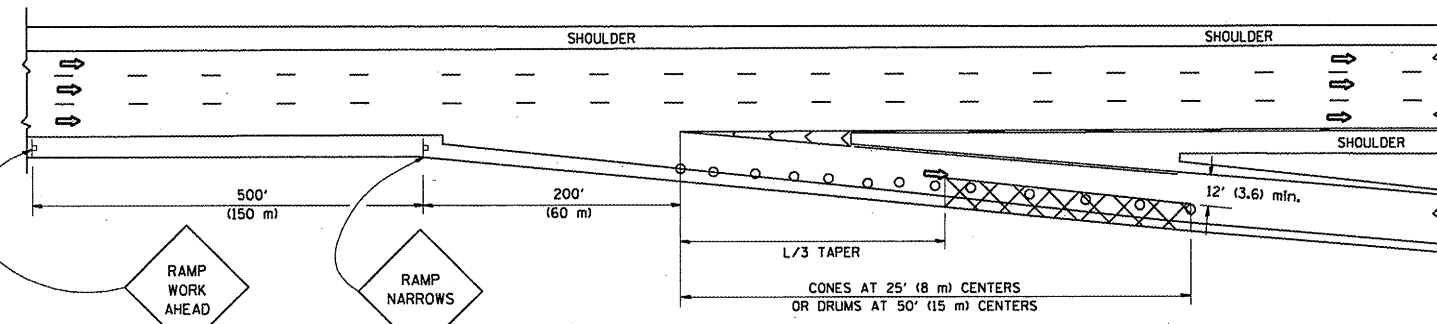
- NOTES
- ③ OMIT WHEN LENGTH OF AUXILIARY LANE IS LESS THAN 500' (150 m).
  - ④ 8-INCH WIDE DOTTED LANE LINE MARKINGS SHALL BE USED WHEN THE LENGTH OF THE AUXILIARY LANE IS 2 MILES OR LESS.
  - ⑤ FOR TWO-LANE ENTRANCE RAMP, IF RIGHT LANE ENDS, USE TYPICAL ENTRANCE RAMP PAVEMENT MARKINGS.
  - ⑥ ONLY AND ARROWS EQUALLY SPACED, 500' (150 m) MAXIMUM SPACING. FULL SIZE LETTERS AND ARROW SHALL BE USED.
  - ⑦ CONTINUE 8" SOLID LANE LINE THROUGH EXIT TO END OF PAVED GORE.

FILE NAME *	USER NAME * nathanbo	DESIGNED - D.W.S.	REVISED - D.W.S. 07-96	<b>STATE OF ILLINOIS DEPARTMENT OF TRANSPORTATION</b>	<b>MULTI-LANE FREEWAY PAVEMENT MARKING DETAILS</b>			F.A.J.-RTE.	SECTION	COUNTY	TOTAL SHEETS	SHEET NO.
ca:\pwork\pwork\d01\nathanbo\d0264861\01395.dgn		DRAWN -	REVISED - J.A.F. 02-06		90	2011-029-I	COOK	20	19			
PLOT SCALE = 1/8" = 1' / IN.		CHECKED -	REVISED - S.P.B. 01-07		<b>TC-12</b>			<b>CONTRACT NO. 60P32</b>				
PLOT DATE = 4/7/2011		DATE - 01-90	REVISED - S.P.B. 01-10		SCALE: NONE SHEET NO. 2 OF 2 SHEETS STA. TO STA.			FED. ROAD DIST. NO. 1 (ILLINOIS) FED. AID PROJECT				

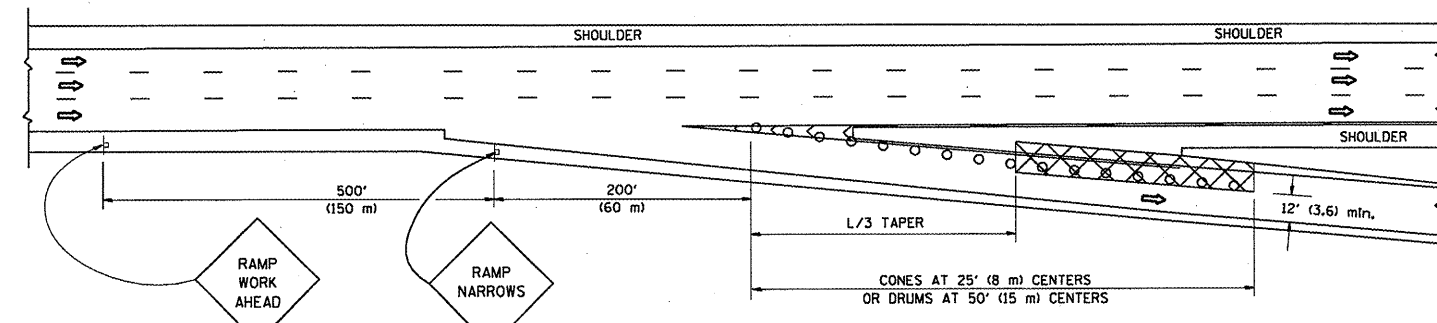
**PARTIAL RAMP CLOSURE DETAILS**



**TYPICAL ENTRANCE RAMP**



**TYPICAL EXIT RAMP**



**TYPICAL EXIT RAMP**

**SYMBOLS**

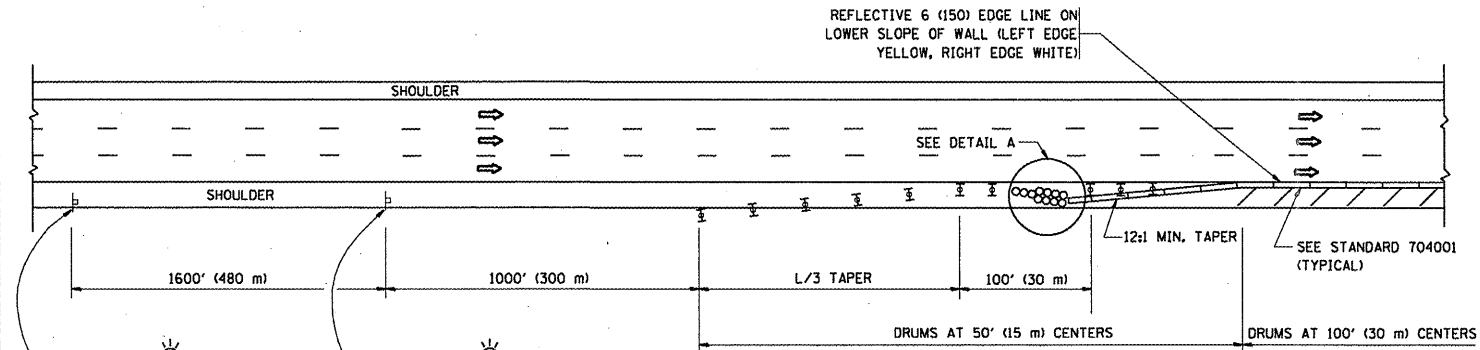
- ACTIVE WORK AREA
- SIGN ON PORTABLE OR PERMANENT SUPPORT
- FLAGGER WITH CONTROL SIGN
- TYPE II BARRICADE, DRUM OR VERTICAL BARRICADE WITH STEADY BURN MONO-DIRECTIONAL LIGHT
- CONE, DRUM OR BARRICADE

**GENERAL NOTES**

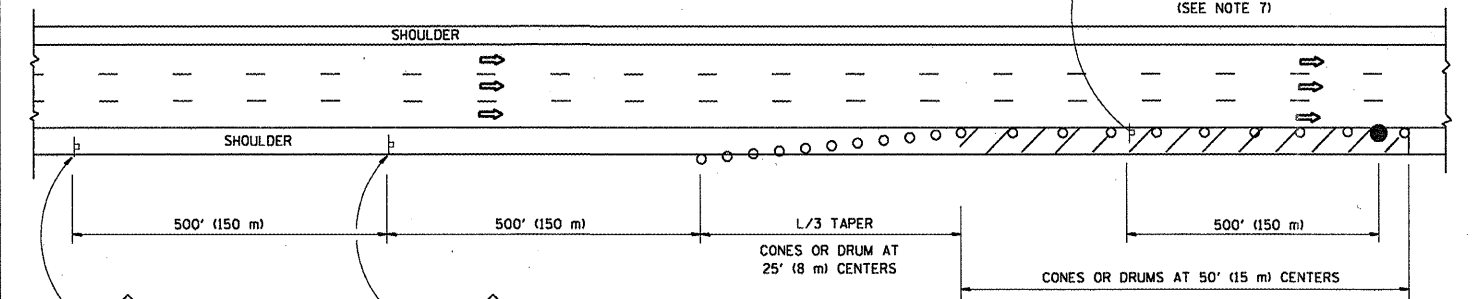
1. THE "L" DISTANCE EQUALS:
 

SPEED LIMIT	FORMULAS
45 mph (80 km/h) OR GREATER:	METRIC ENGLISH L=0.65(W/S) L=(W/S)
W = WIDTH OF OFFSET IN FEET (METERS)	
S = NORMAL POSTED SPEED MPH (KM/H)	
2. PLASTIC DRUMS WITH HIGH PERFORMANCE REFLECTIVE SHEETING AND STEADY BURNING LIGHTS ARE REQUIRED FOR ALL NIGHTTIME CLOSURES.
3. ALL SIGNS SHALL BE POST MOUNTED IF THE CLOSURE TIME EXCEEDS FOUR DAYS.
4. FLASHING LIGHTS SHALL BE USED DURING THE HOURS OF DARKNESS AND SHALL BE INSTALLED ABOVE THE FIRST TWO SETS OF SIGNS.

**SHOULDER CLOSURE DETAILS**

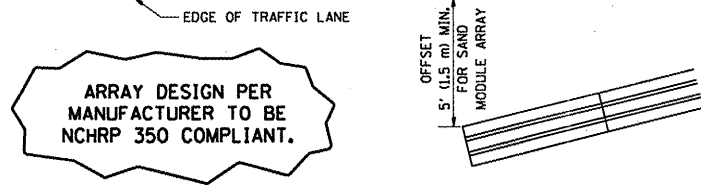


**PERMANENT SHOULDER CLOSURE**



**DAYTIME SHOULDER CLOSURE**

THIS DETAIL IS USED WHERE:  
 1. VEHICLES, EQUIPMENT, WORKERS OR THEIR ACTIVITIES ENCR OACH IN AN AREA CLOSER THAN 15' (4.5 m) TO THE EDGE OF PAVEMENT FOR A PERIOD IN EXCESS OF 15 MINUTES.



ARRAY DESIGN PER MANUFACTURER TO BE NCHRP 350 COMPLIANT.

**DETAIL "A"  
IMPACT ATTENUATOR, TEMPORARY  
(SEE NOTE 5)**

ALL DIMENSIONS ARE IN INCHES (MILLIMETERS) UNLESS OTHERWISE SHOWN.

FILE NAME =	USER NAME = nathanbc	DESIGNED -	REVISED - 04-03
ca:\pw_work\pwidot\nathanbc\0264861\01std.dgn		DRAWN - D.W.S.	REVISED - J.A.F. 12-06
PLOT SCALE = 100.0000' / IN.		CHECKED -	REVISED - S.P.B. 01-07
PLOT DATE = 4/7/2011		DATE - 11-96	REVISED - S.P.B. 12-09

**STATE OF ILLINOIS  
DEPARTMENT OF TRANSPORTATION**

<b>TRAFFIC CONTROL DETAILS FOR FREEWAY SHOULDER CLOSURES AND PARTIAL RAMP CLOSURES</b>			
SCALE: NONE	SHEET NO. 1 OF 1 SHEETS	STA.	TO STA.

F.A.I. RTE.	SECTION	COUNTY	TOTAL SHEETS	SHEET NO.
90	2011-029-1	COOK	20	20
<b>TC-17</b>		<b>CONTRACT NO. 60P32</b>		
FED. ROAD DIST. NO. 1 ILLINOIS FED. AID PROJECT				