

STATE OF ILLINOIS
DEPARTMENT OF TRANSPORTATION
DIVISION OF HIGHWAYS

PROPOSED HIGHWAY PLANS

F.A.I. ROUTE 57: I-57 AT
PRAIRIE VIEW REST AREA IN PEOTONE
SECTION: 99-1-RA-WRS
REST AREA IMPROVEMENT
WILL COUNTY
C-91-461-11

F.A.I. RTE.	SECTION	COUNTY	TOTAL SHEETS	SHEET NO.
57	99-1-RA-WRS	WILL	14	1
		ILLINOIS	CONTRACT NO. 60P08	

*14 + 2 = 16

D-91-461-11

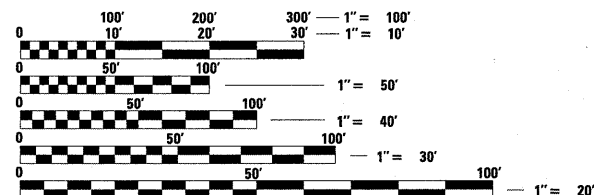


FOR INDEX OF SHEETS, SEE SHEET NO. 2

THE IMPROVEMENT IS LOCATED IN THE VILLAGE OF PEOTONE

TRAFFIC DATA

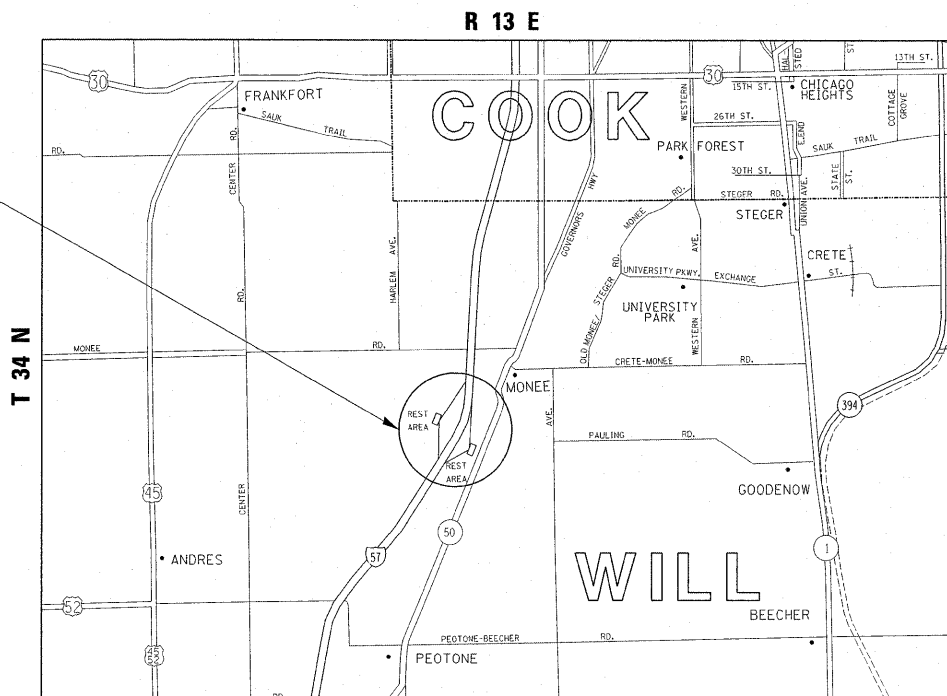
ADT (2010) = 30,600
POSTED SPEED LIMIT = 55 MPH



FULL SIZE PLANS HAVE BEEN PREPARED USING STANDARD ENGINEERING SCALES. REDUCED SIZED PLANS WILL NOT CONFORM TO STANDARD SCALES. IN MAKING MEASUREMENTS ON REDUCED PLANS, THE ABOVE SCALES MAY BE USED.

J.U.L.I.E.
JOINT UTILITY LOCATION INFORMATION FOR EXCAVATION
1-800-892-0123
OR 811

IMPROVEMENT LOCATION



GROSS LENGTH = 1,923 FT. = 0.364 MILE
NET LENGTH = 1,923 FT. = 0.364 MILE

PROJECT ENGINEER ROBERT BORO (847)705-4178
PROJECT MANAGER ISSAM RAYYAN

CONTRACT NO. 60P08

STATE OF ILLINOIS
DEPARTMENT OF TRANSPORTATION
DIVISION OF HIGHWAYS

SUBMITTED APRIL 12, 20 11

Diane M. O'Keefe
DEPUTY DIRECTOR OF HIGHWAYS, REGION ENGINEER

May 13 20 11
Scott E. Stitt, P.E.
Acting ENGINEER OF DESIGN AND ENVIRONMENT

May 13 20 11
Christine M. Reed
DIRECTOR OF HIGHWAYS, CHIEF ENGINEER

PRINTED BY THE AUTHORITY OF THE STATE OF ILLINOIS

INDEX OF SHEETS

SHEET NO.	DESCRIPTION
1	TITLE SHEET
2	INDEX OF SHEETS, STATE STANDARDS, AND GENERAL NOTES
3	SUMMARY OF QUANTITIES
4	EXISTING CROSS SECTION
5	PROPOSED CROSS SECTION
6-7	EXISTING PLANS
8-9	PROPOSED PLANS
10-11	PAVEMENT MARKING PLANS
11A-11B	LIGHTING PLANS
12	PAVEMENT PATCHING FOR HMA SURFACED PAVEMENT (BD-22)
13	CURB OR CURB AND GUTTER REMOVAL AND REPLACEMENT (BD-24)
14	FREEWAY ENTRANCE AND EXIT RAMP CLOSURE DETAILS (TC-08)

GENERAL NOTES

BEFORE STARTING ANY EXCAVATION, THE CONTRACTOR SHALL CALL "JULIE" AT 1-800-892-0123 OR 811 FOR FIELD LOCATIONS OF BURIED ELECTRIC, TELEPHONE, AND GAS FACILITIES. (48 HOUR NOTIFICATION IS REQUIRED).

THE CONTRACTOR SHALL COORDINATE CONSTRUCTION ACTIVITIES WITH UTILITY COMPANIES AND THE VILLAGE OF PEOTONE.

THE CONTRACTOR WILL NOT BE ALLOWED TO SET UP A YARD OR FIELD OFFICE ON STATE PROPERTY WITHOUT WRITTEN PERMISSION FROM THE DEPARTMENT.

DRAINAGE ADJUSTMENT OR RECONSTRUCTION LOCATIONS WILL BE DETERMINED IN THE FIELD BY THE ENGINEER.

IT SHALL BE THE CONTRACTOR'S RESPONSIBILITY TO VERIFY ALL DIMENSIONS AND CONDITIONS EXISTING IN THE FIELD PRIOR TO CONSTRUCTION AND ORDERING OF MATERIALS.

THE CONTRACTOR SHALL CONTACT THE DISTRICT ONE TRAFFIC CONTROL SUPERVISOR AT (847)705-4470 A MINIMUM OF 72 HOURS IN ADVANCE OF BEGINNING WORK.

THE CONTRACTOR SHALL BE REQUIRED TO PROVIDE ACCESS TO ABUTTING PROPERTY AT ALL TIMES DURING THE CONSTRUCTION OF THIS PROJECT.

THE ENGINEER SHALL CONTACT LAWRENCE HILL, AREA TRAFFIC FIELD ENGINEER, AT (815) 485-6475 A MINIMUM OF TWO (2) WEEKS PRIOR TO PLACEMENT OF FINAL PAVEMENT MARKINGS.

THE THICKNESS OF THE HMA MIXTURE SHOWN ON THE PLANS IS THE NOMINAL THICKNESS. DEVIATIONS FROM THE NOMINAL THICKNESS WILL BE PERMITTED WHEN SUCH DEVIATIONS OCCUR DUE TO IRREGULARITIES IN THE EXISTING SURFACE OF BASE ON WHICH THE HMA MIXTURE IS PLACED.

ALL PAVEMENT PATCHING LOCATIONS WILL BE DETERMINED IN THE FIELD BY THE ENGINEER.

DO NOT SCALE PLANS FOR CONSTRUCTION DIMENSIONS.

THE CONTRACTOR SHALL COORDINATE WITH RAY FRIAS AT (847) 846-7128, TWO WEEKS PRIOR TO SHUT DOWN OF REST AREA. COST OF ADDITIONAL REST AREA CLOSURE SIGNS REQUIRED ARE INCLUDED IN THE COST OF " TRAFFIC CONTROL AND PROTECTION (EXPRESSWAYS) ".

STATE STANDARDS

STANDARD NO.	DESCRIPTION
442201-03	CLASS C AND D PATCHES
482011-03	HMA SHLD. STRIPS/SHLDS. WITH RESURFACING OR WIDENING AND RESURFACING PROJECTS
602011-02	CATCH BASIN TYPE C
606301-04	PC CONCRETE ISLANDS AND MEDIANS
604001-03	FRAME AND LIDS TYPE 1
604006-04	FRAME AND GRATE TYPE 3
604036-02	GRATE TYPE B
606001-04	CONCRETE CURB TYPE B AND COMBINATION CONCRETE CURB AND GUTTER
701901-01	TRAFFIC CONTROL DEVICES

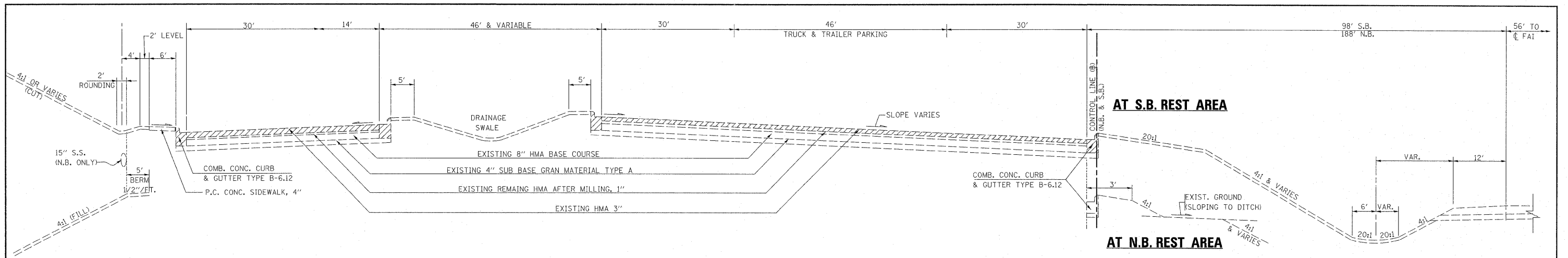
FILE NAME =	USER NAME = Hamdaneh	DESIGNED -	REVISED -	STATE OF ILLINOIS DEPARTMENT OF TRANSPORTATION	I-57 AT PRARIE VIEW REST AREA IN PEOTONE INDEX OF SHEETS, STATE STANDARDS AND GENERAL NOTES	F.A.I RTE.	SECTION	COUNTY	TOTAL SHEETS	SHEET NO.	
cs:\pw\work\pwsdot\hamdaneh\d0264490\shh	plan.dgn	DRAWN -	REVISED -			57	99-I-RA-WRS	WILL	14	2	
	PLOT SCALE = 50.0000 ' / IN.	CHECKED -	REVISED -			CONTRACT NO. 60PO8					
	PLOT DATE = 4/12/2011	DATE -	REVISED -			ILLINOIS FED. AID PROJECT					

Rev

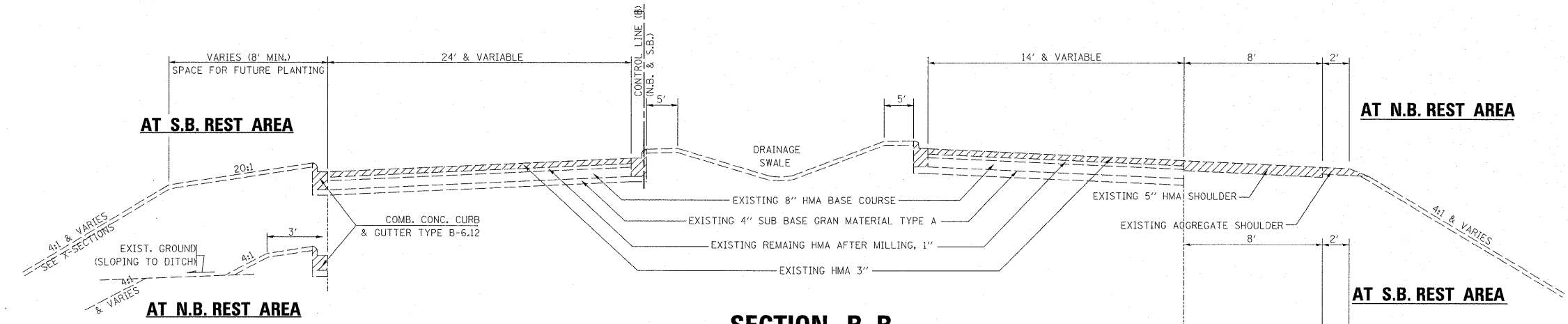
SUMMARY OF QUANTITIES			URBAN 100% STATE	CONSTRUCTION TYPE CODE					SUMMARY OF QUANTITIES			URBAN 100% STATE	CONSTRUCTION TYPE CODE						
CODE NO	ITEM	UNIT	TOTAL QUANTITIES	South Bound I-57	North Bound I-57					CODE NO	ITEM	UNIT	TOTAL QUANTITIES	South Bound I-57	North Bound I-57				
				0005	0005									0005	0005				
20200100	EARTH EXCAVATION	CU YD	1209.43	632.91	576.52					70300260	TEMPORARY PAVEMENT MARKING - LINE 12"	FOOT	560	280	280				
20201200	REMOVAL AND DISPOSAL OF UNSUITABLE MATERIAL	CU YD	308.8	77.51	231.29					78000100	THERMOPLASTIC PAVEMENT MARKING - LETTERS AND SYMBOLS	SQ FT	124	62	62				
21101615	TOPSOIL FURNISH AND PLACE, 4"	SO YD	148.1	74.6	73.5					78000200	THERMOPLASTIC PAVEMENT MARKING - LINE 4"	FOOT	13448	6724	6724				
25200110	SODDING, SALT TOLERANT	SO YD	148.1	74.6	73.5					78000400	THERMOPLASTIC PAVEMENT MARKING - LINE 6"	FOOT	88	44	44				
25000310	SODDING, CLASS 4	ACRE	0.3		0.3					78000500	THERMOPLASTIC PAVEMENT MARKING - LINE 8"	FOOT	180	90	90				
40600200	BITUMINOUS MATERIALS (PRIME COAT)	TON	19	9	10					78000600	THERMOPLASTIC PAVEMENT MARKING - LINE 12"	FOOT	1576	788	788				
25100630	EROSION CONTROL BLANKET	SQ YD	1467		1467					81603090	UNIT DUCT, 600V, 3-1C NO. 4, 1/C NO. 6 GROUND, (XLP-TYPE USE), 1 1/4" DIA. POLYETHYLENE	FOOT	50	50					
40600300	AGGREGATE (PRIME COAT)	TON	94	46	48					81900200	TRENCH AND BACKFILL FOR ELECTRICAL WORK	FOOT	300	300					
40600400	MIXTURE FOR CRACKS, JOINTS, AND FLANGEWAYS	TON	35	17	18					83600200	LIGHT POLE FOUNDATION, 24" DIAMETER	FOOT	10	10					
40600895	CONSTRUCTING TEST STRIP	EACH	1	0.5	0.5					84400105	RELOCATE EXISTING LIGHTING UNIT	EACH	1	1					
40600982	HOT-MIX ASPHALT SURFACE REMOVAL - BUTT JOINT	SO YD	55	28	27					X0322919	CLEAN EXISTING STRUCTURES	EACH	4	2	2				
40603085	HOT-MIX ASPHALT BINDER COURSE, 1 1/2" D, N70	TON	2204	1102	1102					X2020110	GRADING AND SHAPING SHOULDERS	UNIT	26	11	15				
40603340	HOT-MIX ASPHALT SURFACE COURSE, MIX "D", N70	TON	3367	1658	1709					X5539700	STORM SEWERS TO BE CLEANED	FOOT	150	75	75				
40701901	HOT-MIX ASPHALT PAVEMENT (FULL-DEPTH) 11"	SQ YD	1035	556	479					X7011015	TRAFFIC CONTROL AND PROTECTION (EXPRESSWAYS)	L SUM	1	0.5	0.5				
42001300	PROTECTIVE COAT	SO YD	182	91	91					Z0001050	AGGREGATE SUBGRADE 12"	SO YD	4246	2123	2123				
42400100	PORTLAND CEMENT CONCRETE SIDEWALK, 4"	SQ FT	600	300	300					Z0013798	CONSTRUCTION LAYOUT	L SUM	1	0.5	0.5				
44000157	HOT-MIX ASPHALT SURFACE REMOVAL, 2"	SO YD	23277	11037	12180					31101816	SUB-BASE GRANULAR MATERIAL, TYPE B 13 1/2"	SO YD	56.88	28.44	28.44				
44000500	COMBINATION CURB AND GUTTER REMOVAL	FOOT	24937	12251	12686					Z0033028	MAINTENANCE OF LIGHTING SYSTEM	CAL MO	3	3					
44000600	SIDEWALK REMOVAL	SO FT	600	300	300					81603035	UNIT DUCT 600V, 2-1C NO. 6, 1/C NO. 6 GROUND, (XLP-TYPE USE), 1" DIA POLYETHYLENE	FOOT	300	300					
44004250	PAVED SHOULDER REMOVAL	SO YD	563		563														
44201753	CLASS D PATCHES, TYPE II, 9 INCH	SO YD	704.28	342.99	361.29														
44201757	CLASS D PATCHES, TYPE III, 9 INCH	SO YD	704.28	342.99	361.29														
44201759	CLASS D PATCHES, TYPE IV, 9 INCH	SO YD	1939	957	981														
48102100	AGGREGATE WEDGE SHOULDER, TYPE B	TON	47	20	27														
48101200	AGGREGATE SHOULDERS, TYPE B	TON	172	73	99														
48203029	HOT-MIX ASPHALT SHOULDERS, 8"	SO YD	427.5	212.73	214.77														
550A0070	STORM SEWERS, CLASS A, TYPE 1 15"	FOOT	9		9														
55100700	STORM SEWER REMOVAL 15"	FOOT	11.5	11.5															
60207605	CATCH BASINS, TYPE C, TYPE 8 GRATE	EACH	2	1	1														
60250500	CATCH BASINS TO BE ADJUSTED WITH NEW TYPE 1 FRAME, CLOSED LID	EACH	1		1														
60300105	FRAMES AND GRATES TO BE ADJUSTED	EACH	3	1	2														
60404300	FRAMES AND GRATES, TYPE 3	EACH	1	1															
60500050	REMOVING CATCH BASINS	EACH	2	1	1														
60603800	COMBINATION CONCRETE CURB AND GUTTER, TYPE B-6.12	FOOT	1113	563	550														
60618300	CONCRETE MEDIAN SURFACE, 4 INCH	SO FT	512	256	256														
67100100	MOBILIZATION	L SUM	1	0.5	0.5														
67000400	ENGINEER'S FIELD OFFICE	CAL MO	4	2	2														
70300220	TEMPORARY PAVEMENT MARKING - LINE 4"	FOOT	13117	6371	6746														

* SPECIALTY ITEMS

Rev.



SECTION C-C

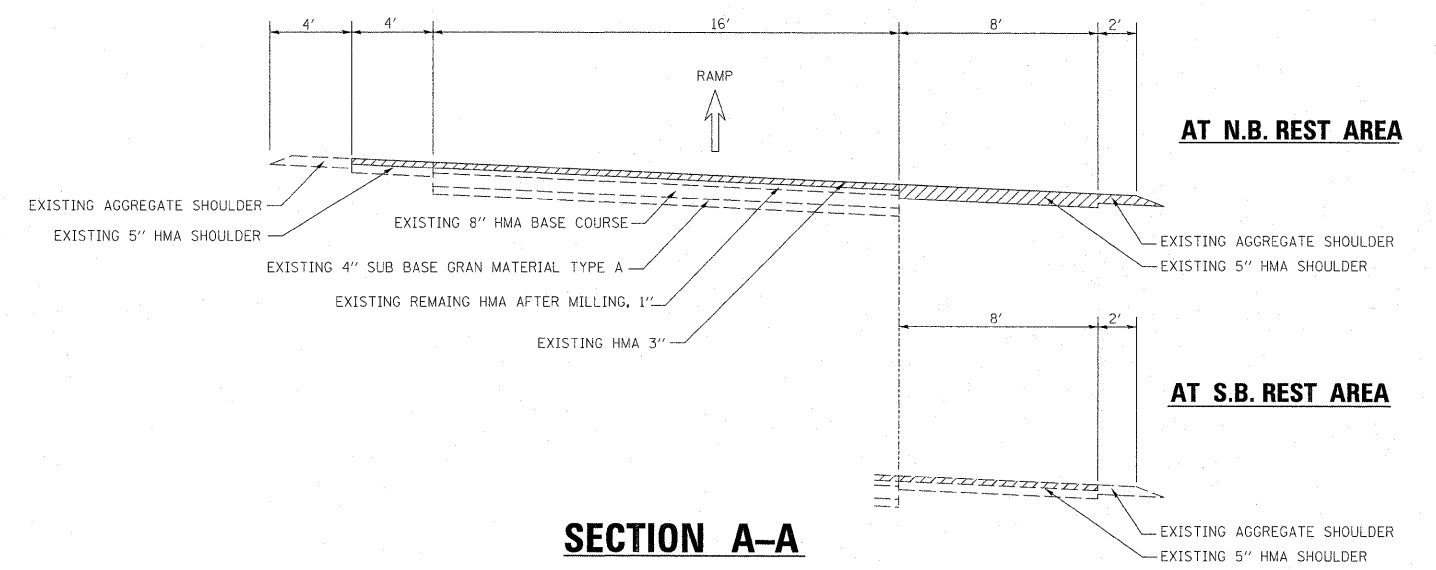


SECTION B-B

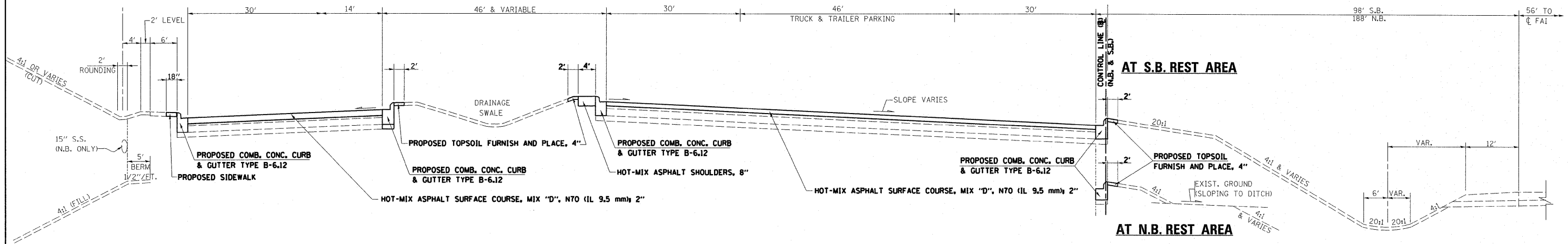
HMA MIXTURE REQUIREMENTS	
MIXTURE TYPE	AIR VOIDS @ NDES
PAVEMENT RESURFACING	
HOT-MIX ASPHALT SURFACE COURSE, MIX "D", N70 (IL 9.5 mm); 2"	4% @ 70 GYR
PAVEMENT FULL-DEPTH	
HOT-MIX ASPHALT SURFACE COURSE, MIX "D", N70 (IL 9.5 mm); 2"	4% @ 70 GYR
HOT-MIX ASPHALT BINDER COURSE, IL-19.0, N70, 9" (3 LIFTS)	4% @ 70 GYR
SHOULDER	
HOT-MIX ASPHALT SHOULDERS, (HOT-MIX ASPHALT BINDER IL-19 mm)	2% @ 30 GYR
PATCHING	
CLASS D PATCHES, (HMA BINDER IL-19 mm)	4% @ 70 GYR
NOTE:	
THE CONTRACTOR SHALL MILL FIRST BEFORE PATCHING	

THE UNIT WEIGHT USED TO CALCULATE ALL HOT-MIX ASPHALT SURFACE MIXTURE QUANTITIES IS 112 LBS/SQYD/IN.

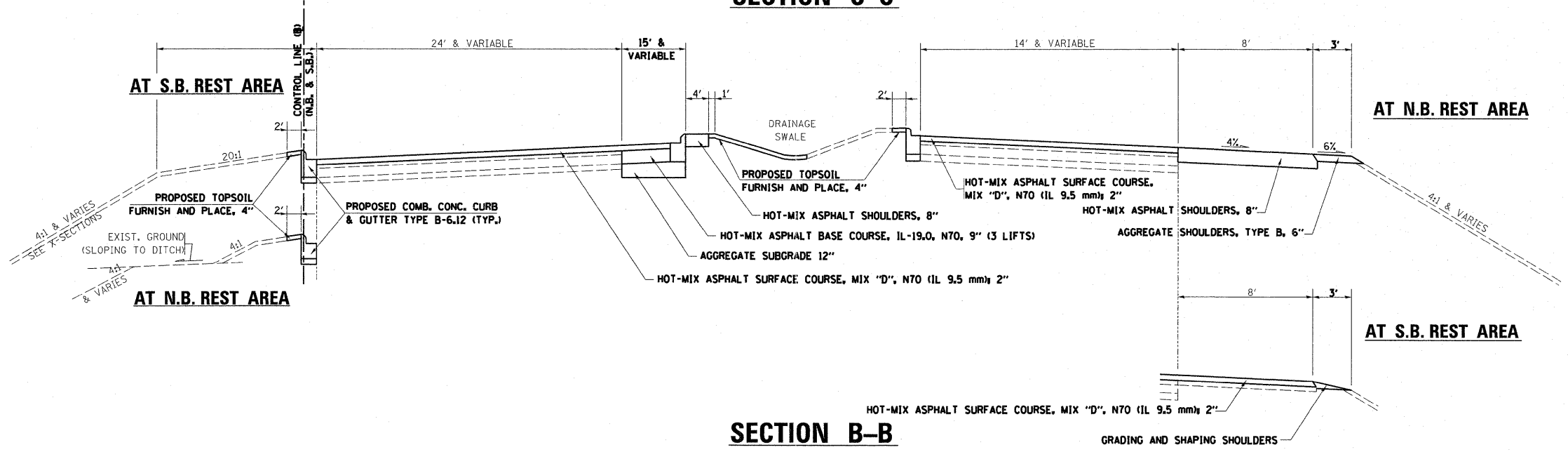
THE "AC TYPE" FOR POLYMERIZED HMA MIXES SHALL BE "SBS/SBR PG 70 -22" AND FOR NON-POLYMERIZED HMA THE "AC TYPE" SHALL BE "PG 64 -22" UNLESS MODIFIED BY DISTRICT ONE SPECIAL PROVISIONS. FOR "PERCENT OF RAP" SEE DISTRICT ONE SPECIAL PROVISIONS.



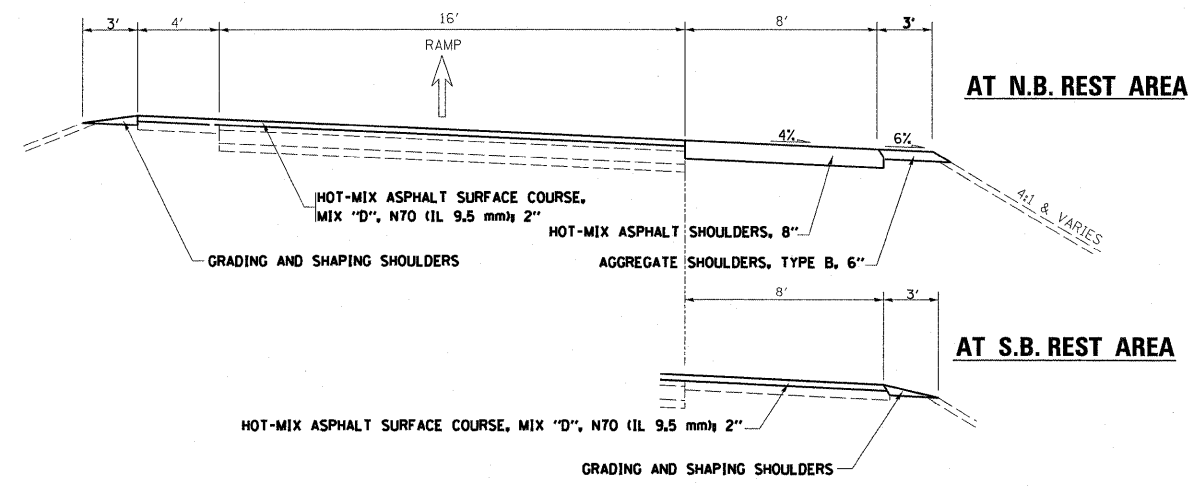
SECTION A-A



SECTION C-C

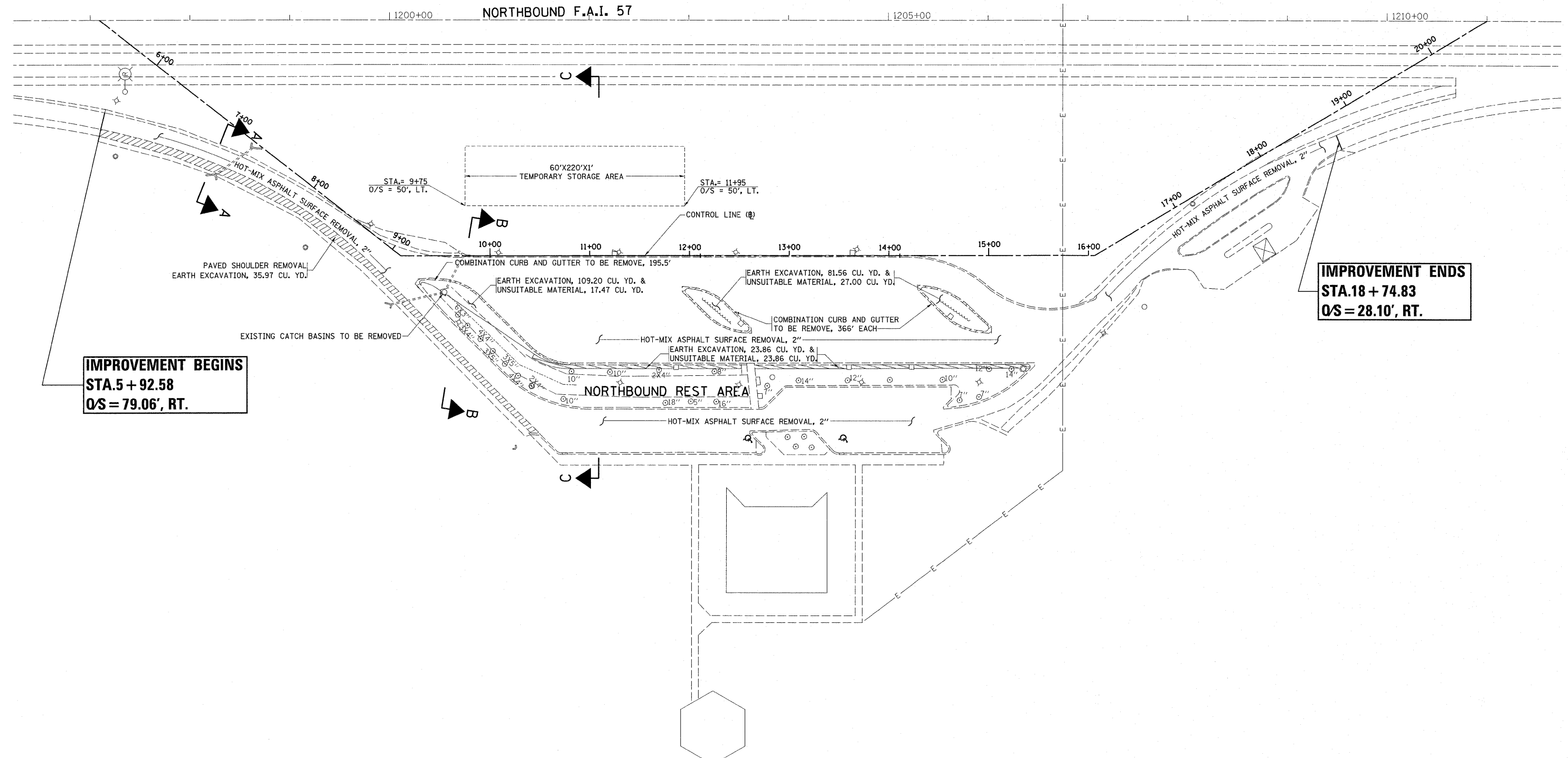
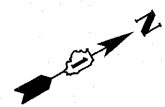


SECTION B-B



SECTION A-A

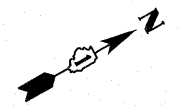
FILE NAME =	USER NAME = Hamdanah	DESIGNED -	REVISED -	STATE OF ILLINOIS DEPARTMENT OF TRANSPORTATION	I-57 AT PRARIE VIEW REST AREA IN PEOTONE PROPOSED CROSS SECTION			F.A.I RTE.	SECTION	COUNTY	TOTAL SHEETS	SHEET NO.
cr:\pw\work\pw\dot\hamdanah\0264490\sh	plan.dgn	DRAWN -	REVISED -					57	99-I-RA-WRS	WILL	14	5
	PLOT SCALE = 50.0000' / IN.	CHECKED -	REVISED -		SCALE: SHEET NO. 1 OF 1 SHEETS STA. TO STA.			CONTRACT NO. 60PO8				
	PLOT DATE = 5/11/2011	DATE -	REVISED -		ILLINOIS FED. AID PROJECT							



IMPROVEMENT BEGINS
STA. 5 + 92.58
O/S = 79.06', RT.

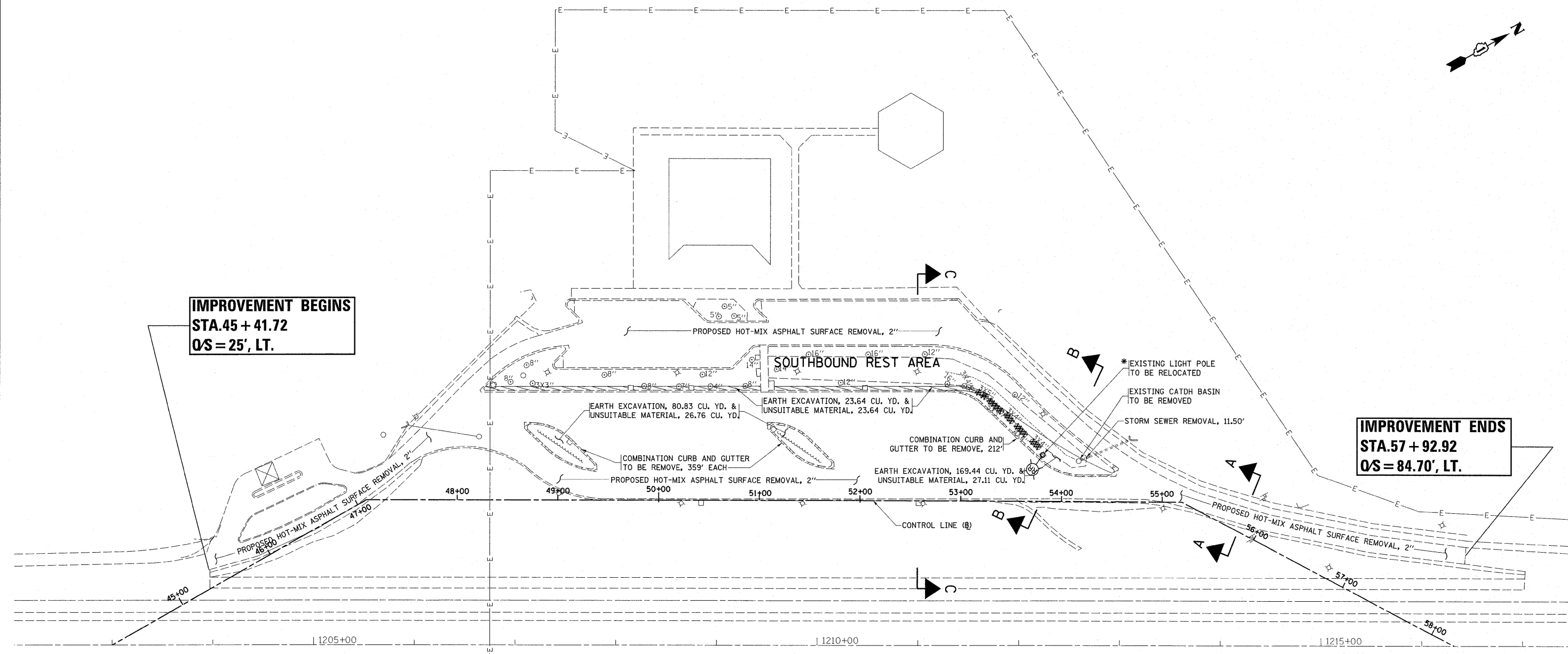
IMPROVEMENT ENDS
STA. 18 + 74.83
O/S = 28.10', RT.

FILE NAME =	USER NAME = Hamdaneh	DESIGNED -	REVISED -	STATE OF ILLINOIS DEPARTMENT OF TRANSPORTATION	I-57 AT PRARIE VIEW REST AREA IN PEOTONE EXISTING PLAN (NORTHBOUND REST AREA)	F.A.I. RTE.	SECTION	COUNTY	TOTAL SHEETS	SHEET NO.	
et:\pw_work\pwork\hamdaneh\d2264490\ah\plan.dgn		DRAWN -	REVISED -			57	99-I-RA-WRS	WILL	14	6	
PLOT SCALE = 58.0000' / IN.		CHECKED -	REVISED -			CONTRACT NO. 60P08					
PLOT DATE = 5/10/2011		DATE -	REVISED -			ILLINOIS FED. AID PROJECT					



IMPROVEMENT BEGINS
STA. 45 + 41.72
Q/S = 25', LT.

IMPROVEMENT ENDS
STA. 57 + 92.92
Q/S = 84.70', LT.



NORTHBOUND F.A.I. 57

* THE REMOVAL OF EXISTING LIGHT POLE FOUNDATION IS INCLUDED IN THE COST OF EARTH EXCAVATION.

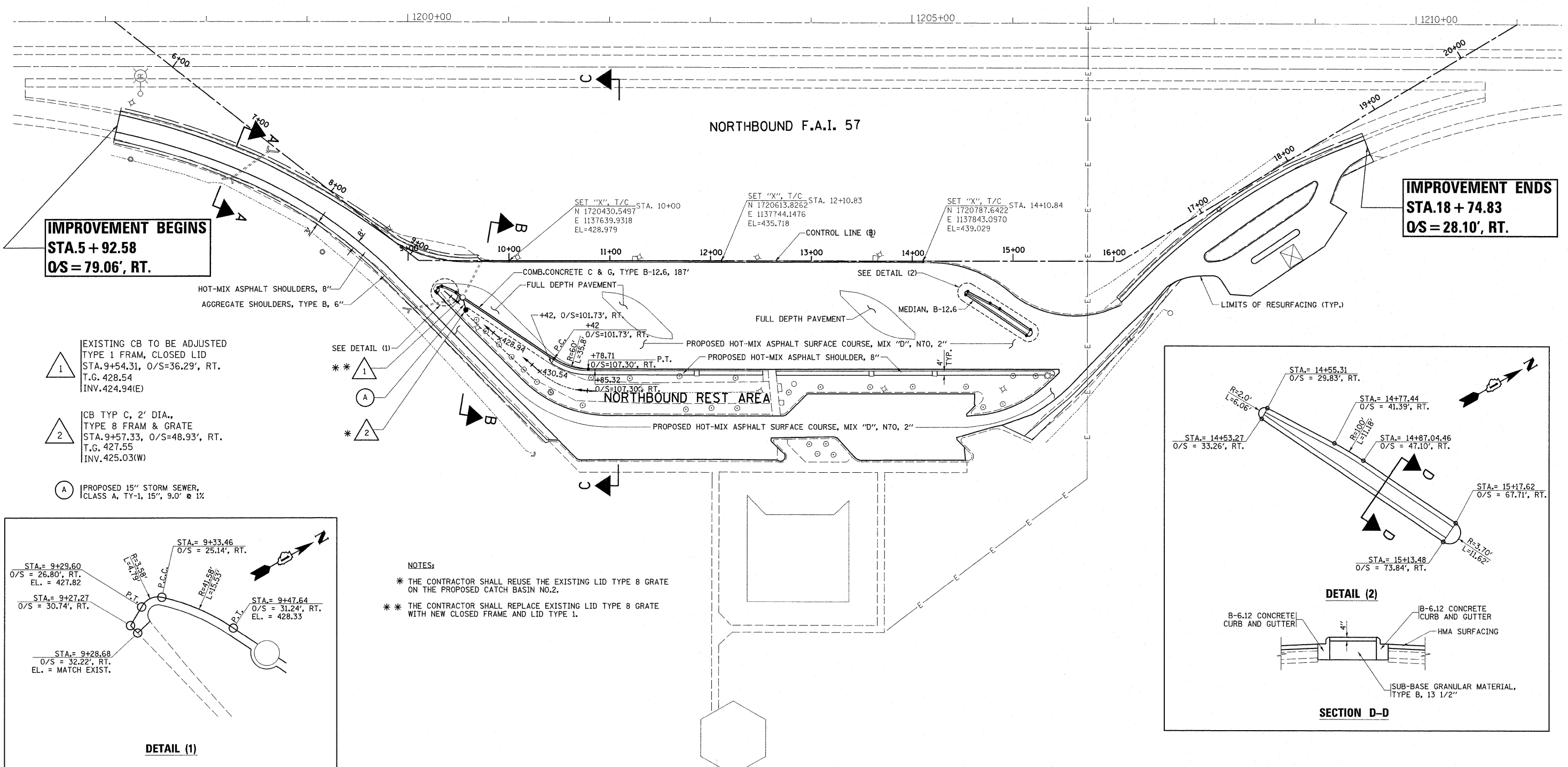
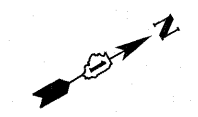
FILE NAME =	USER NAME = Hamdanah	DESIGNED -	REVISED -
ca:\pwwork\pwwdot\hamdanah\d0264490\shh\plan.dgn		DRAWN -	REVISED -
PLOT SCALE = 50.0000' / IN.		CHECKED -	REVISED -
PLOT DATE = 5/11/2011		DATE -	REVISED -

STATE OF ILLINOIS
DEPARTMENT OF TRANSPORTATION

I-57 AT PRARIE VIEW REST AREA IN PEOTONE
EXISTING PLAN (SOUTHBOUND REST AREA)

SCALE: SHEET NO. 2 OF 2 SHEETS STA. TO STA.

F.A.I. RTE. 57	SECTION 99-1-RA-WRS	COUNTY WILL	TOTAL SHEETS 14	SHEET NO. 7
			CONTRACT NO. 60P08	
ILLINOIS FED. AID PROJECT				



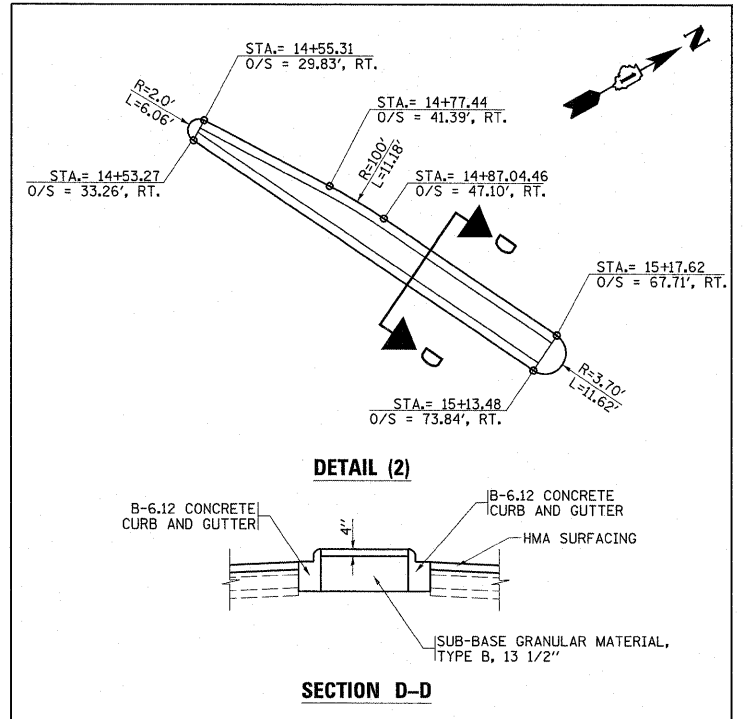
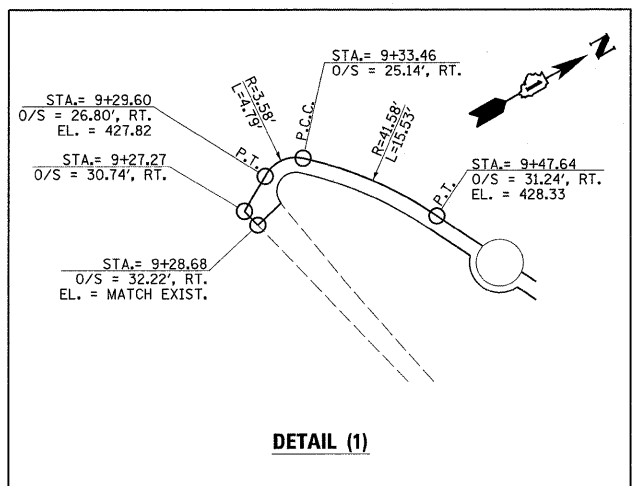
IMPROVEMENT BEGINS
STA. 5 + 92.58
OS = 79.06', RT.

IMPROVEMENT ENDS
STA. 18 + 74.83
OS = 28.10', RT.

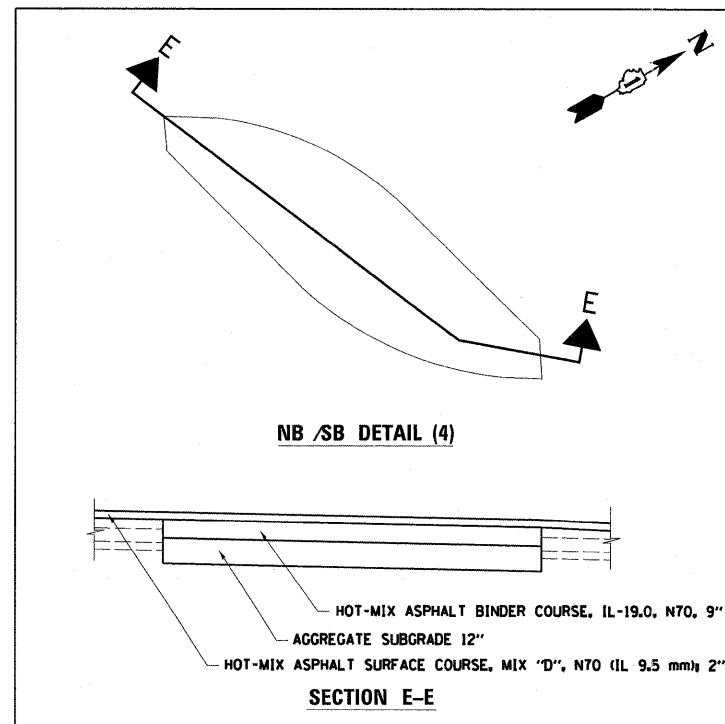
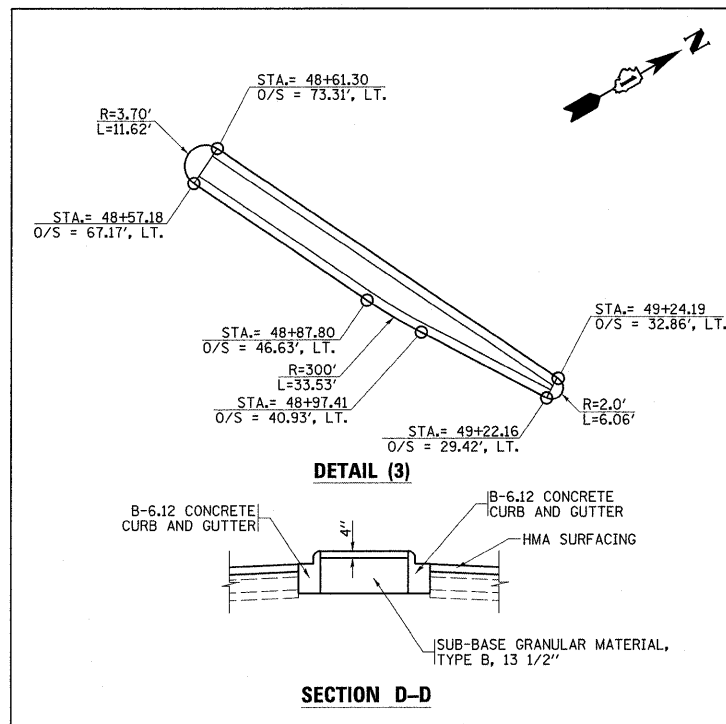
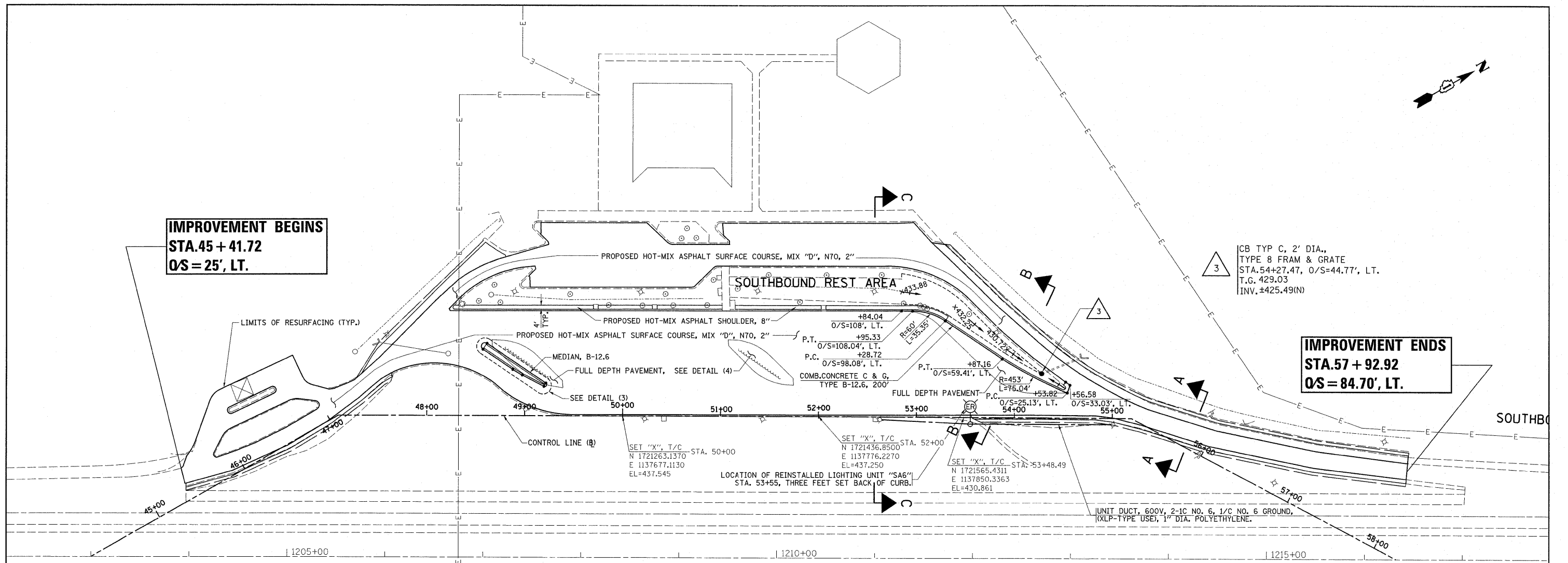
- 1 EXISTING CB TO BE ADJUSTED
 TYPE 1 FRAM, CLOSED LID
 STA. 9+54.31, O/S=36.29', RT.
 T.G. 428.54
 INV. 424.94(E)
- 2 CB TYP C, 2' DIA.,
 TYPE 8 FRAM & GRATE
 STA. 9+57.33, O/S=48.93', RT.
 T.G. 427.55
 INV. 425.03(W)
- A PROPOSED 15" STORM SEWER,
 CLASS A, TY-1, 15", 9.0' @ 1%

- SEE DETAIL (1)
- ** 1
- A
- ** 2
- A

NOTES:
 * THE CONTRACTOR SHALL REUSE THE EXISTING LID TYPE 8 GRATE ON THE PROPOSED CATCH BASIN NO.2.
 * THE CONTRACTOR SHALL REPLACE EXISTING LID TYPE 8 GRATE WITH NEW CLOSED FRAME AND LID TYPE 1.



FILE NAME =	USER NAME = Hamdaneh	DESIGNED -	REVISED -	STATE OF ILLINOIS DEPARTMENT OF TRANSPORTATION	I-57 AT PRARIE VIEW REST AREA IN PEOTONE PROPOSED PLAN (NORTHBOUND REST AREA)	F.A.I. RTE.	SECTION	COUNTY	TOTAL SHEETS	SHEET NO.	
ct:\pwork\pwork\hamdaneh\08264490\shdplan.dgn	PLOT SCALE = 50.0000' / IN.	DRAWN -	REVISED -			57	99-1-RA-WRS	WILL	14	8	
PLOT DATE = 5/11/2011	DATE -	CHECKED -	REVISED -			CONTRACT NO. 60PO8					
						ILLINOIS FED. AID PROJECT					
					SCALE:	SHEET NO. 1 OF 2 SHEETS		STA. TO STA.			



NOTE:

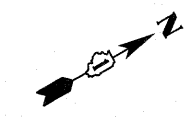
THE CONTRACTOR SHALL REUSE THE EXISTING LID TYPE 8 GRATE ON THE PROPOSED CATCH BASIN NO.3.

UNDERGROUND SPLICING OF CABLES IS NOT PERMITTED. SPLICING SHALL BE ACCOMPLISHED IN LIGHT POLES.

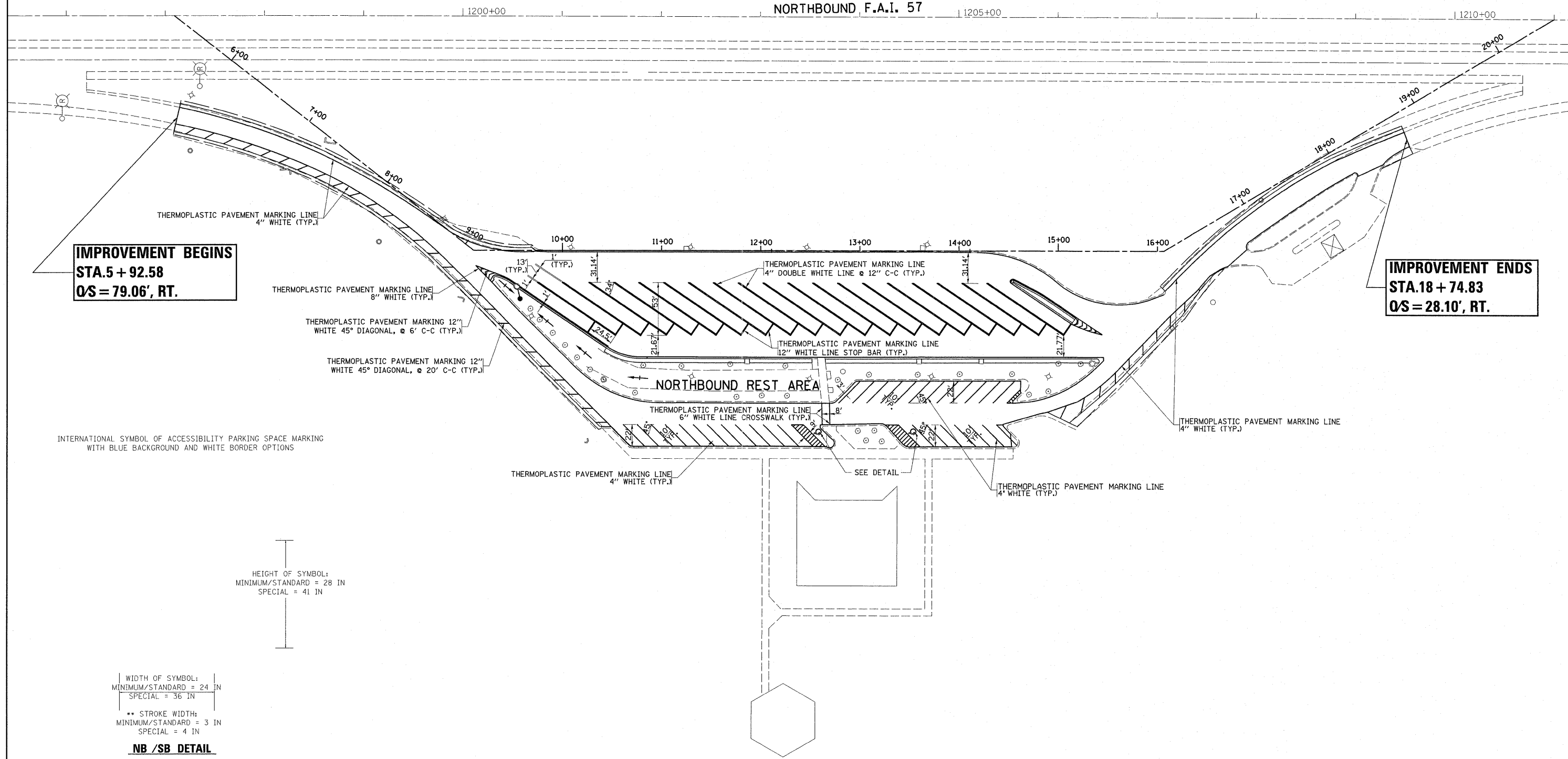
CONTRACTOR SHALL VERIFY BOLT CIRCLE SIZE ON EXISTING LIGHT POLE AND COORDINATE WITH NEW FOUNDATION PRIOR TO INSTALLING NEW FOUNDATION.

LIGHTING UNIT RELOCATION SHALL BE ACCOMPLISHED SUCH THAT AT NO TIME IS THE ROADWAY LEFT UNLIT.

FILE NAME =	USER NAME = Hamdanah	DESIGNED -	REVISED -	STATE OF ILLINOIS DEPARTMENT OF TRANSPORTATION	I-57 AT PRARIE VIEW REST AREA IN PEOTONE PROPOSED PLAN (SOUTHBOUND REST AREA)	F.A.I. RTE.	SECTION	COUNTY	TOTAL SHEETS	SHEET NO.	
ct:\pwork\pwork\hamdanah\d264490\shdplan.dgn	PLOT SCALE = 50.0000' / IN.	DRAWN -	REVISED -			57	99-I-RA-WRS	WILL	14	9	
PLOT DATE = 5/11/2011		CHECKED -	REVISED -			CONTRACT NO. 60PO8					
		DATE -	REVISED -			ILLINOIS FED. AID PROJECT					
					SCALE:	SHEET NO. 2 OF 2 SHEETS		STA.	TO STA.		



NORTHBOUND F.A.I. 57



IMPROVEMENT BEGINS
STA. 5 + 92.58
Q/S = 79.06', RT.

IMPROVEMENT ENDS
STA. 18 + 74.83
Q/S = 28.10', RT.

INTERNATIONAL SYMBOL OF ACCESSIBILITY PARKING SPACE MARKING
 WITH BLUE BACKGROUND AND WHITE BORDER OPTIONS

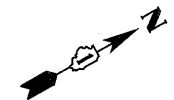
HEIGHT OF SYMBOL:
 MINIMUM/STANDARD = 28 IN
 SPECIAL = 41 IN

WIDTH OF SYMBOL:
 MINIMUM/STANDARD = 24 IN
 SPECIAL = 36 IN

** STROKE WIDTH:
 MINIMUM/STANDARD = 3 IN
 SPECIAL = 4 IN

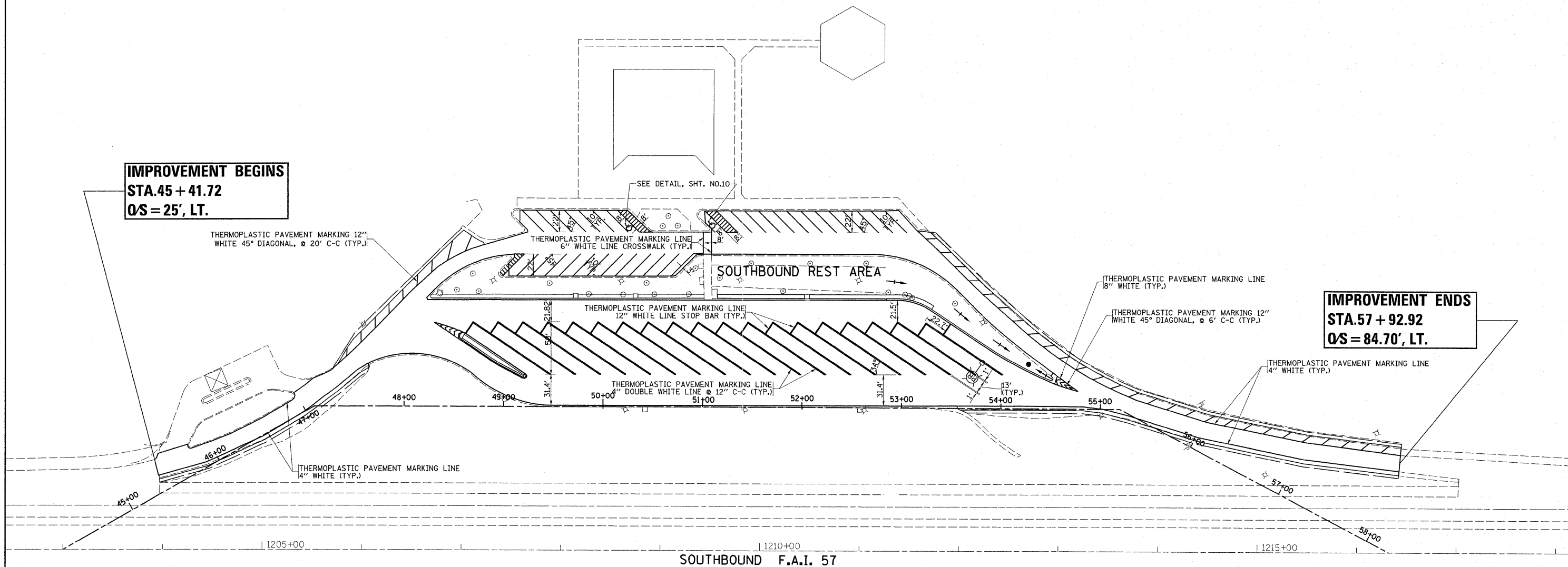
NB /SB DETAIL

FILE NAME =	USER NAME = Hamdanah	DESIGNED -	REVISED -	STATE OF ILLINOIS DEPARTMENT OF TRANSPORTATION	I-57 AT PRARIE VIEW REST AREA IN PEOTONE PAVEMENT MARKING PLAN (NORTHBOUND REST AREA)	F.A.I. RTE. 57	SECTION 99-I-RA-WRS	COUNTY WILL	TOTAL SHEETS 14	SHEET NO. 10		
ct:\pw_work\p\dot\hamdanah\d0264490\shp\plan.dgn	PLOT SCALE = 50.0000' / IN.	DRAWN -	REVISED -			SCALE:	SHEET NO. 1 OF 2 SHEETS	STA.	TO STA.	CONTRACT NO. 60P08		
PLOT DATE = 5/10/2011	DATE -	CHECKED -	REVISED -			[ILLINOIS] FED. AID PROJECT						
		DATE -	REVISED -									



IMPROVEMENT BEGINS
STA. 45 + 41.72
Q/S = 25', LT.

IMPROVEMENT ENDS
STA. 57 + 92.92
Q/S = 84.70', LT.

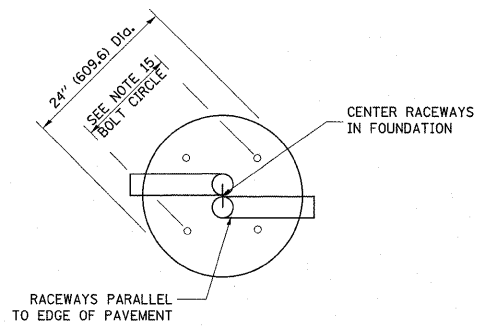


SOUTHBOUND F.A.I. 57

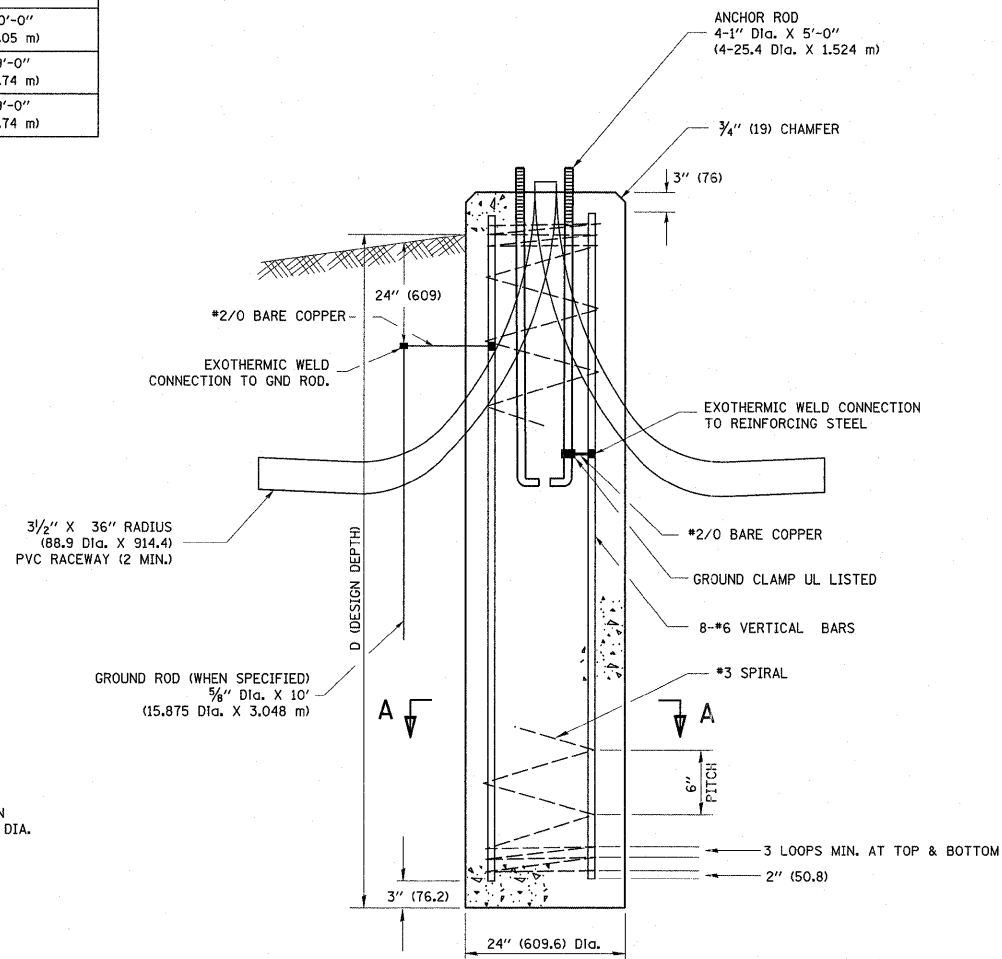
FILE NAME =	USER NAME = Hamdanah	DESIGNED -	REVISED -	STATE OF ILLINOIS DEPARTMENT OF TRANSPORTATION	I-57 AT PRARIE VIEW REST AREA IN PEOTONE PAVEMENT MARKING PLAN (SOUTHBOUND REST AREA)	F.A.I. RTE.	SECTION	COUNTY	TOTAL SHEETS	SHEET NO.	
ct:\pw_work\p1dot\hamdanah\d0264490\shp\plan.dgn		DRAWN -	REVISED -			57	99-I-RA-WRS	WILL	14	11	
PLOT SCALE = 50.0000' / IN.		CHECKED -	REVISED -			CONTRACT NO. 60P08					
PLOT DATE = 5/10/2011		DATE -	REVISED -			ILLINOIS FED. AID PROJECT					
					SCALE:	SHEET NO. 2 OF 2 SHEETS		STA.	TO STA.		

LIGHT POLE FOUNDATION DEPTH TABLE
40 FT. (12.192 m) TO 47.5 FT. (14.478 m) MOUNTING HEIGHT

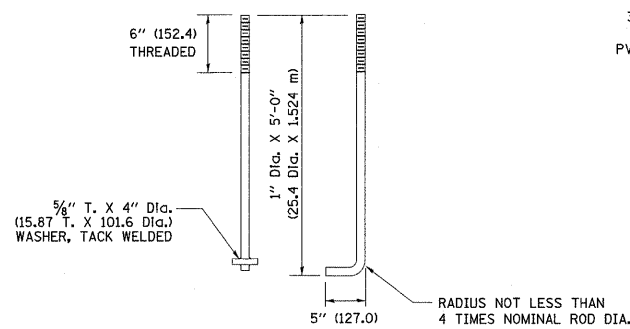
SOIL CONDITIONS	DESIGN DEPTH "D" OF FOUNDATION	
	SINGLE ARM POLE	TWIN ARM POLE
SOFT CLAY Qu = 0.375 TON/SQ. FT.	13'-0" (3.96 m)	15'-0" (4.57 m)
MEDIUM CLAY Qu = 0.75 TON/SQ.FT	9'-6" (2.93 m)	10'-9" (3.23 m)
STIFF CLAY Qu = 1.50 TON/SQ. FT.	7'-0" (2.13 m)	8'-0" (2.44 m)
LOOSE SAND φ = 34°	9'-0" (2.74 m)	10'-0" (3.05 m)
MEDIUM SAND φ = 37.5°	8'-3" (2.52 m)	9'-0" (2.74 m)
DENSE SAND φ = 40°	7'-9" (2.36 m)	9'-0" (2.74 m)



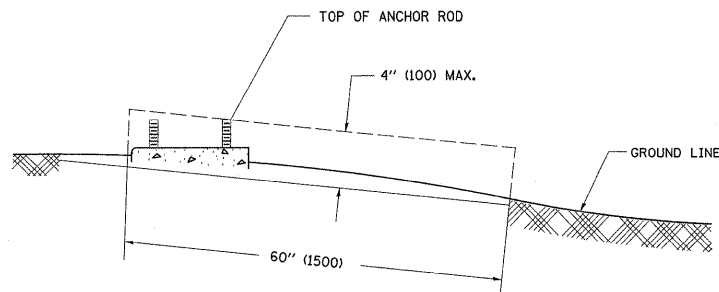
TOP VIEW



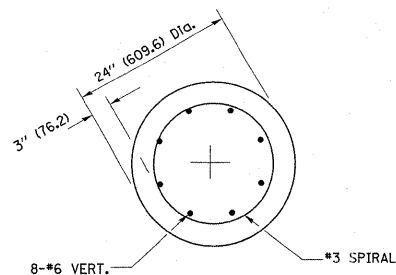
FOUNDATION DETAIL



ANCHOR ROD DETAIL



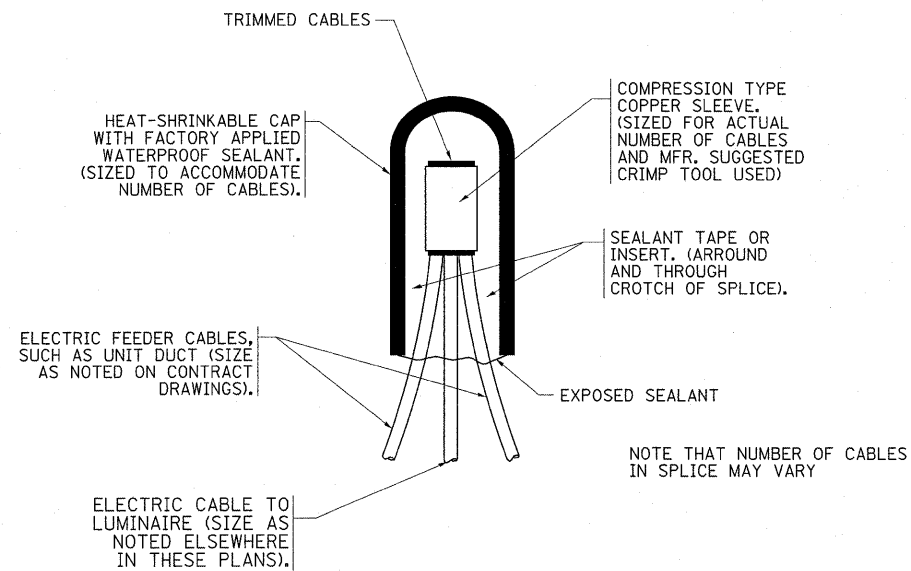
FOUNDATION EXTENSION DETAIL



SECTION A-A

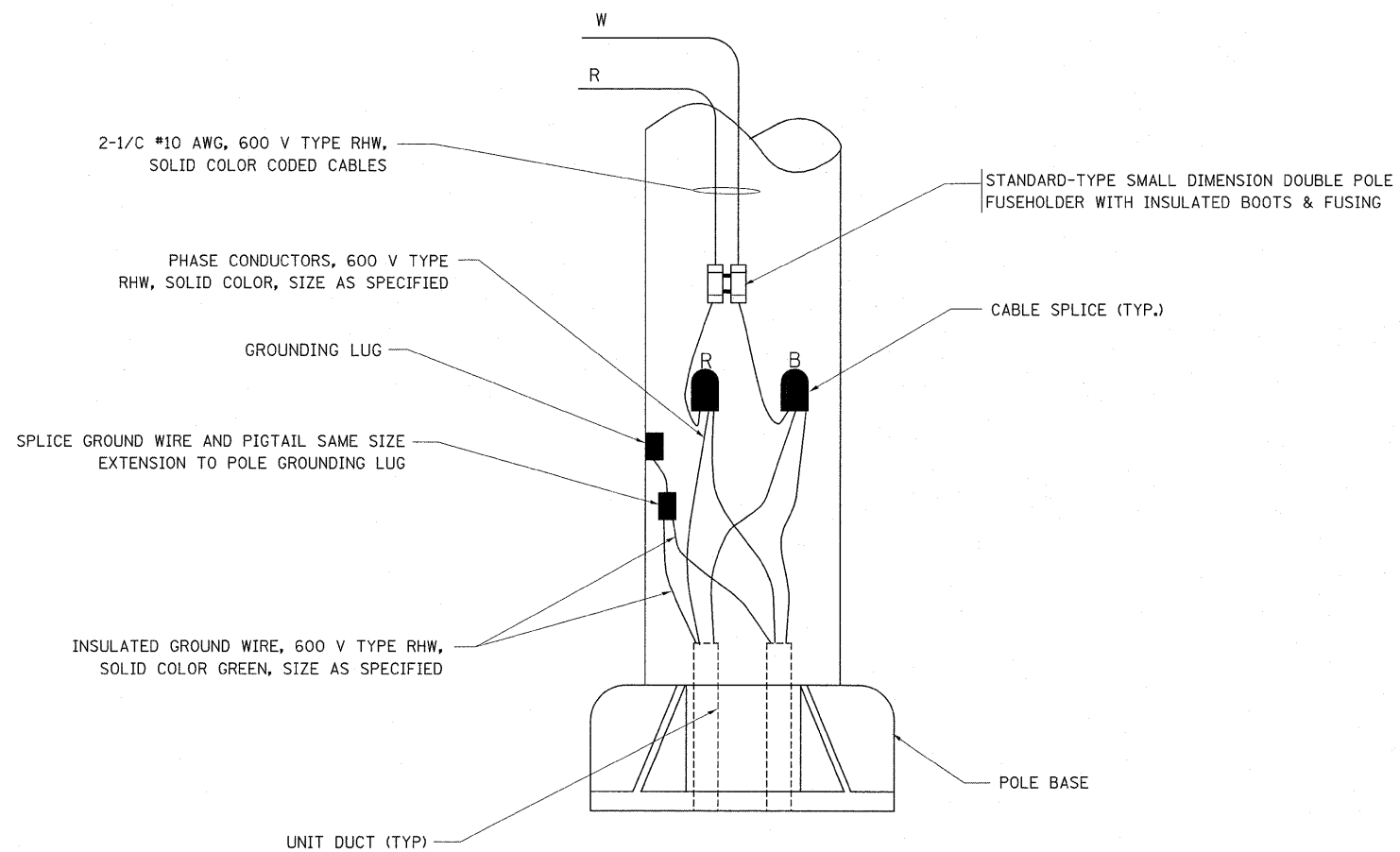
NOTES

- ALL DIMENSIONS ARE IN INCHES (MILLIMETERS) UNLESS OTHERWISE SHOWN.
- THE ANCHOR RODS AND RACEWAYS SHALL BE PROPERLY SECURED IN PLACE BEFORE THE CONCRETE IS PLACED.
- THE FOUNDATION SHALL NOT PROTRUDE MORE THAN 100MM (4 IN.) ABOVE THE FINISHED GRADE WITHIN A 60 IN. (1.5 m) CHORD ACROSS THE FOUNDATION, WITH ANCHOR RODS INCLUDED. IN ACCORDANCE WITH AASHTO GUIDELINES. IF THE FOUNDATION HEIGHT, INCLUDING ANCHOR RODS, EXTENDS BEYOND THESE SPECIFIED LIMITS, THE FOUNDATION SHALL BE REPLACED AT THE CONTRACTOR'S EXPENSE. SEE FOUNDATION EXTENSION DETAIL.
- THE HOLE FOR THE FOUNDATION SHALL BE MADE BY DRILLING WITH AN AUGER, OF THE SAME DIAMETER AS THE FOUNDATION. IF SOIL CONDITIONS REQUIRE THE USE OF A LINER TO FORM THE HOLE, THE LINER SHALL BE WITHDRAWN AS THE CONCRETE IS DEPOSITED.
- THE TOP OF THE FOUNDATION SHALL BE CONSTRUCTED LEVEL. A LINER OR FORM SHALL BE USED TO PRODUCE A UNIFORM SMOOTH SIDE TO THE TOP OF THE FOUNDATION. FOUNDATION TOP SHALL BE CHAMFERED 3/4-IN. (20 mm).
- THE CONCRETE SHALL BE CLASS SI. CONCRETE SHALL CURE ACCORDING TO ARTICLE 1020.13 BEFORE LIGHT POLES ARE INSTALLED.
- THE ANCHOR ROD SHALL BE A HOOK ROD TYPE. COLD BENDING OF THE ANCHOR ROD WILL NOT BE ALLOWED. THE RADIUS OF THE HOOK BEND SHALL NOT BE LESS THAN 4 TIMES THE NOMINAL DIAMETER OF THE ANCHOR ROD. A TACK WELDED ANCHOR ROD MAY BE SUBSTITUTED WITH THE APPROVAL OF THE ENGINEER.
- THE ANCHOR RODS SHALL BE ACCORDING TO ASTM F1554 GRADE 725 (GRADE 105), NUTS SHALL BE HEXAGON NUTS ACCORDING TO ASTM A 194 2H OR ASTM A 563 DH, AND WASHERS SHALL BE ACCORDING TO ASTM F 436.
- ANCHOR RODS, NUTS AND WASHERS SHALL BE COMPLETELY GALVANIZED BY EITHER THE HOT-DIPPED PROCESS CONFORMING WITH AASHTO M 232, THE MECHANICAL PLATING METHOD CONFORMING TO AASHTO M 298, CLASS 50 WITH A MAXIMUM COATING THICKNESS OF 150 UM(6 MILS) OR THE ELECTROLYTIC PROCESS ACCORDING TO ASTM F 1136.
- THE ANCHOR RODS SHALL BE THREADED A MINIMUM OF 6 INCHES (150 mm) WITH A MINIMUM OF 3 INCHES (75 mm) OF THREADED ANCHOR ROD EMBEDDED IN THE FOUNDATION.
- ANCHOR RODS SHALL PROJECT 2 3/4" (69.9 mm) ABOVE THE TOP OF THE FOUNDATION. IF BREAKAWAY COUPLINGS ARE SPECIFIED, THE CONTRACTOR SHALL CAREFULLY COORDINATE THE ANCHOR ROD PROJECTION WITH THE INSTALLATION REQUIREMENTS OF THE BREAKAWAY COUPLINGS.
- THE CONTRACTOR SHALL USE A #3 SPIRAL AT 6" (152.4 mm) PITCH OR MAY SUBSTITUTE #3 TIES AT 12" (304.8 mm) O.C. WITH THE APPROVAL OF THE ENGINEER.
- THE CABLE TRENCHES AND FOUNDATION SHALL BE BACK FILLED AND COMPACTED AS SPECIFIED BEFORE THE LIGHT POLE IS ERECTED.
- THE RACEWAYS SHALL PROJECT 1" (25.4 mm) ABOVE THE TOP OF THE FOUNDATION.
- CONTRACTOR SHALL VERIFY BOLT CIRCLE ON EXISTING LIGHT POLE AND COORDINATE WITH NEW FOUNDATION PRIOR TO INSTALLATION.



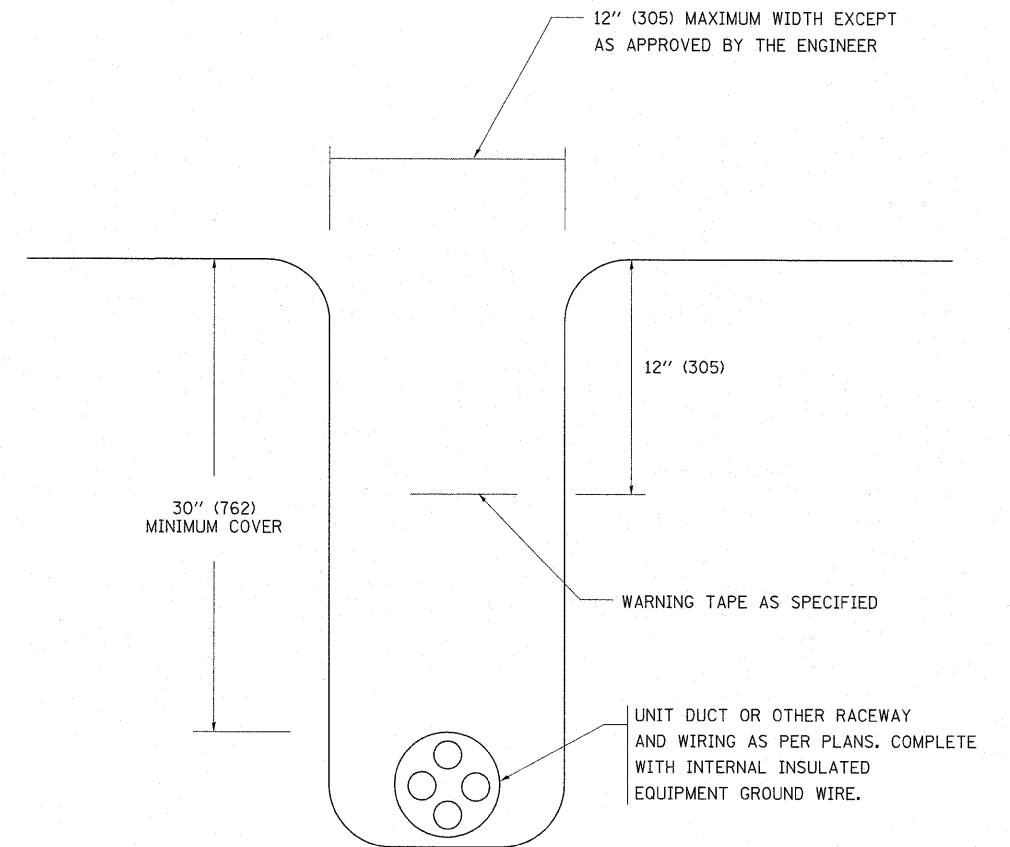
TYPICAL SPLICE DETAIL

N.T.S.



POLE WIRING DETAIL

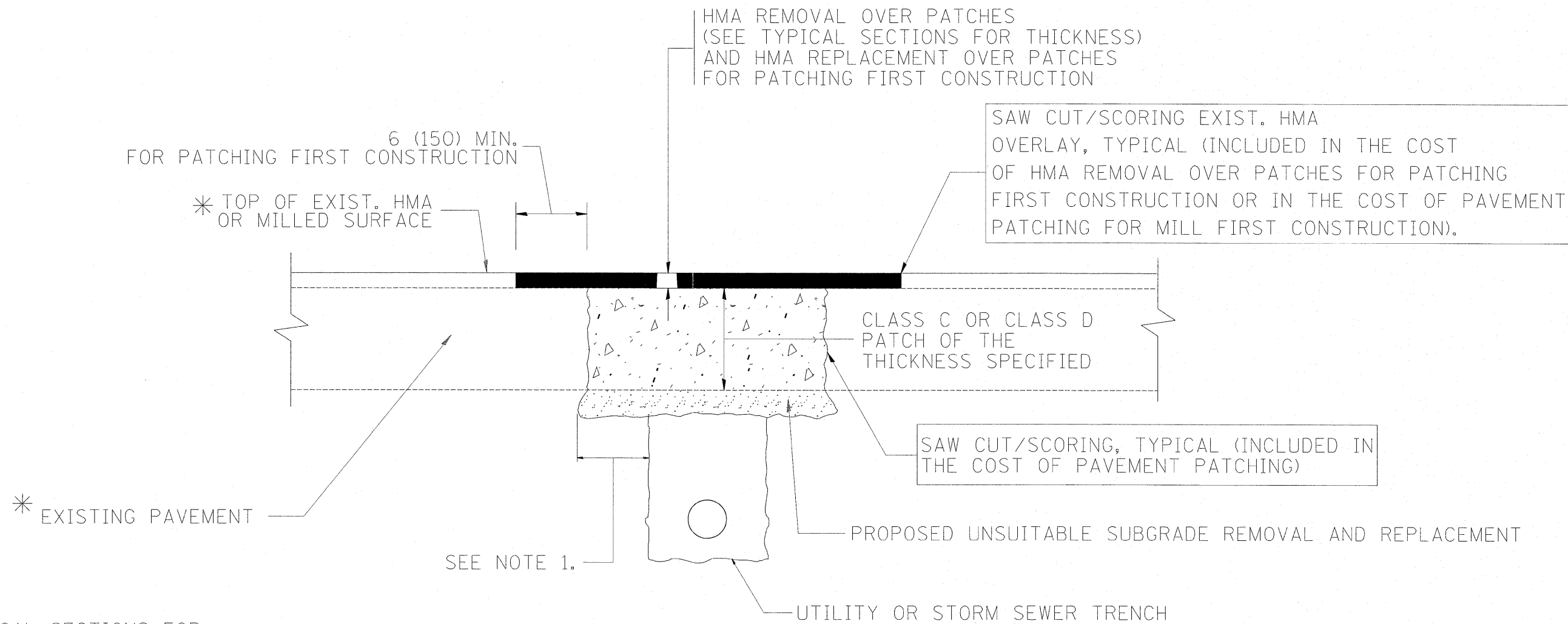
N.T.S.



TYPICAL WIRING IN TRENCH DETAIL

N.T.S.

FILE NAME =	USER NAME = Hamdanah	DESIGNED -	REVISED - 08-08-03	STATE OF ILLINOIS DEPARTMENT OF TRANSPORTATION	I-57 AT PRIRIE VIEW REST AREA IN PEOTONE MISC. ELECTRICAL DETAILS	F.A.I. RTE.	SECTION	COUNTY	TOTAL SHEETS	SHEET NO.	
ct:\pw\work\pwsdot\hamdanah\0264490\shd\plan.dgn		DRAWN -	REVISED -			57	99-1-RA-WRS	WILL	14	11B	
PLOT SCALE = 50.0000' / IN.		CHECKED -	REVISED -			CONTRACT NO. 60PO8					
PLOT DATE = 5/10/2011		DATE -	REVISED -			FED. ROAD DIST. NO. 1 ILLINOIS FED. AID PROJECT					
					SCALE: NONE	SHEET NO. 1 OF 1 SHEETS	STA.	TO STA.			



* SEE TYPICAL SECTIONS FOR THICKNESS AND MATERIALS

NOTES:

1. THE WIDTH OF THE FULL DEPTH PATCH OVER A TRENCH SHALL BE 12 (300) WIDER ON EACH SIDE OF THE TRENCH.
2. FOR METHOD OF MEASUREMENT AND BASIS OF PAYMENT, SEE RECURRING SPECIAL PROVISION "PATCHING WITH HOT-MIX ASPHALT OVERLAY REMOVAL".

SEQUENCE OF CONSTRUCTION (PATCHING FIRST)

1. REMOVE THE EXISTING HMA MATERIAL OVER THE AREA TO BE PATCHED.
2. REMOVE AND REPLACE WITH CLASS C OR D PATCH.
3. REPLACE HMA MATERIAL OVER THE AREA TO BE PATCHED.

SEQUENCE OF CONSTRUCTION (MILLING FIRST)

1. MILL HMA FIRST IF THERE IS AT LEAST 4 1/2 INCHES OR MORE OF HMA MATERIAL ON TOP OF THE EXISTING PAVEMENT OR IF THE PAVEMENT IS FULL DEPTH HMA. A MINIMUM OF 2 INCHES OF HMA MATERIAL SHALL BE IN PLACE AFTER MILLING.
2. REMOVE AND REPLACE WITH FULL DEPTH CLASS D PATCHES TO TOP OF MILLED SURFACE.

ALL DIMENSIONS ARE IN INCHES (MILLIMETERS) UNLESS OTHERWISE SHOWN.

FILE NAME =	USER NAME = Hamdaneh	DESIGNED - R. SHAH	REVISED - A. ABBAS 04-27-98	STATE OF ILLINOIS DEPARTMENT OF TRANSPORTATION	PAVEMENT PATCHING FOR HMA SURFACED PAVEMENT			F.A.T. RTE.	SECTION	COUNTY	TOTAL SHEETS	SHEET NO.		
es:\pr-work\p\dot\hamdaneh\0264490\01	Std.dgn	DRAWN -	REVISED - R. BORO 01-01-07		SCALE: NONE	SHEET NO. 1	OF 1 SHEETS	STA.	TO STA.	57	99-I-RA-WRS	WILL	14	12
	PLOT SCALE = 50,0000 ' / IN.	CHECKED -	REVISED - R. BORO 09-04-07		BD400-04 (BD-22)			CONTRACT NO. 60P08						
	PLOT DATE = 4/12/2011	DATE - 10-25-94	REVISED - K. ENG 10-27-08		FED. ROAD DIST. NO. 1 ILLINOIS FED. AID PROJECT									

VARIABLE - TO MEET EXISTING DIMENSIONS AND FIELD CONDITIONS (SEE NOTE ②)

PROP. CONC. CURB OR CURB AND GUTTER REPLACEMENT IN ACCORDANCE WITH STATE STANDARD 606001. (SEE NOTE ②)

SAW CUT FULL DEPTH - INCLUDED IN THE COST OF SIDEWALK, DRIVEWAY OR MEDIAN SURFACE REMOVAL PAY ITEM.

SEE STATE STANDARD 606001
EXISTING OR PROPOSED HMA SURFACE (IF APPLICABLE)

1/4" (5) **

18" (450) MAX.

EXISTING SIDEWALK, DRIVEWAY, MEDIAN SURFACE, SOD OR GROUND.

PROPOSED SIDEWALK, DRIVEWAY PAVEMENT, MEDIAN SURFACE OR SODDING SALT TOLERANT WITH TOP SOIL, 4" (100) SOD RESTORATION (SEE NOTE ①).

EXISTING CONCRETE PAVEMENT, CONCRETE BASE COURSE OR FLEXIBLE PAVEMENT

3" (75) MIN.

SUITABLE BACKFILL MATERIAL (INCLUDED IN THE COST OF CURB OR CURB AND GUTTER REMOVAL AND REPLACEMENT)

PROPOSED 3/4" (20) PREFORMED EXPANSION JOINT AT CONCRETE SIDEWALKS, DRIVEWAYS, AND MEDIANS. (INCLUDED IN THE COST OF CURB OR CURB AND GUTTER REMOVAL AND REPLACEMENT.)

* 3" (75) MINIMUM FROM TOP AND BOTTOM OF THE CONCRETE PAVEMENT OR BASE COURSE.

** IF THE FINAL SURFACE OF THE PAVEMENT IS CONCRETE, THE GUTTER IS TO BE FLUSH WITH THE PAVEMENT.

NOTE: ① SIDEWALK, DRIVEWAY PAVEMENT OR MEDIAN SURFACE SHALL BE SIMILAR TO THE MATERIAL BEING REMOVED AND WILL BE PAID FOR SEPARATELY.

SODDING, SALT TOLERANT AND TOP SOIL, FURNISH AND PLACE 4" WILL BE PAID FOR SEPARATELY.

② FERTILIZER FOR THE PLACEMENT OF THE SOD IS NOT REQUIRED

③ CURB OR CURB AND GUTTER REPLACEMENT SHALL MATCH THE SHAPE OF THE EXISTING CURB OR CURB AND GUTTER UNLESS OTHERWISE SPECIFIED.

④ FOR CURB OR CURB AND GUTTER REMOVAL AND REPLACEMENT ADJACENT TO FLEXIBLE PAVEMENT DELETE EPOXY COATED TIE BARS.

⑤ LONGITUDINAL BARS, IF ENCOUNTERED IN THE EXISTING CURB OR CURB AND GUTTER, ARE NOT TO BE REPLACED. CUTTING AND REMOVING LONGITUDINAL BARS SHALL BE INCLUDED IN THE COST OF CURB OR CURB AND GUTTER REMOVAL AND REPLACEMENT.

⑥ THE COST OF HMA SURFACE REMOVAL IN THE EXISTING GUTTER FLAG SHALL BE INCLUDED IN THE COST OF THE CURB AND GUTTER REMOVAL AND REPLACEMENT.

⑦ THE REMOVAL AND REPLACEMENT OF THE EXISTING CURB OR CURB AND GUTTER SHALL BE DONE IN ACCORDANCE WITH THE APPLICABLE PORTIONS OF SECTION 440 AND 606 OF THE STANDARD SPECIFICATIONS.

⑧ THE LOCATIONS OF REMOVAL AND REPLACEMENT OF EXISTING CURB OR CURB AND GUTTER SHALL BE DETERMINED BY THE RESIDENT ENGINEER AT THE TIME OF CONSTRUCTION.

UNSUITABLE SUB-BASE MATERIAL TO BE REMOVED, IF DIRECTED BY THE ENGINEER, SHALL BE REPLACED WITH EITHER SUB-BASE GRANULAR MATERIAL, TYPE B OR ADDITIONAL THICKNESS OF CONCRETE.

REMOVAL AND REPLACEMENT 4" (100) OR LESS IS INCLUDED IN THE COST OF CURB OR CURB AND GUTTER REMOVAL AND REPLACEMENT.

REMOVAL AND REPLACEMENT IN EXCESS OF 4" (100) WILL BE PAID FOR IN ACCORDANCE WITH ARTICLE 109.04 OF THE STANDARD SPECIFICATIONS.

PROPOSED #6 (20) EPOXY COATED TIE BARS 24" (600) LONG AT 24" (600) CENTERS WILL NOT BE PAID FOR SEPARATELY. DELETE EPOXY COATED TIE BARS IF EXISTING TIE BARS ARE USUABLE AS DETERMINED BY THE ENGINEER. (SEE NOTE ③).

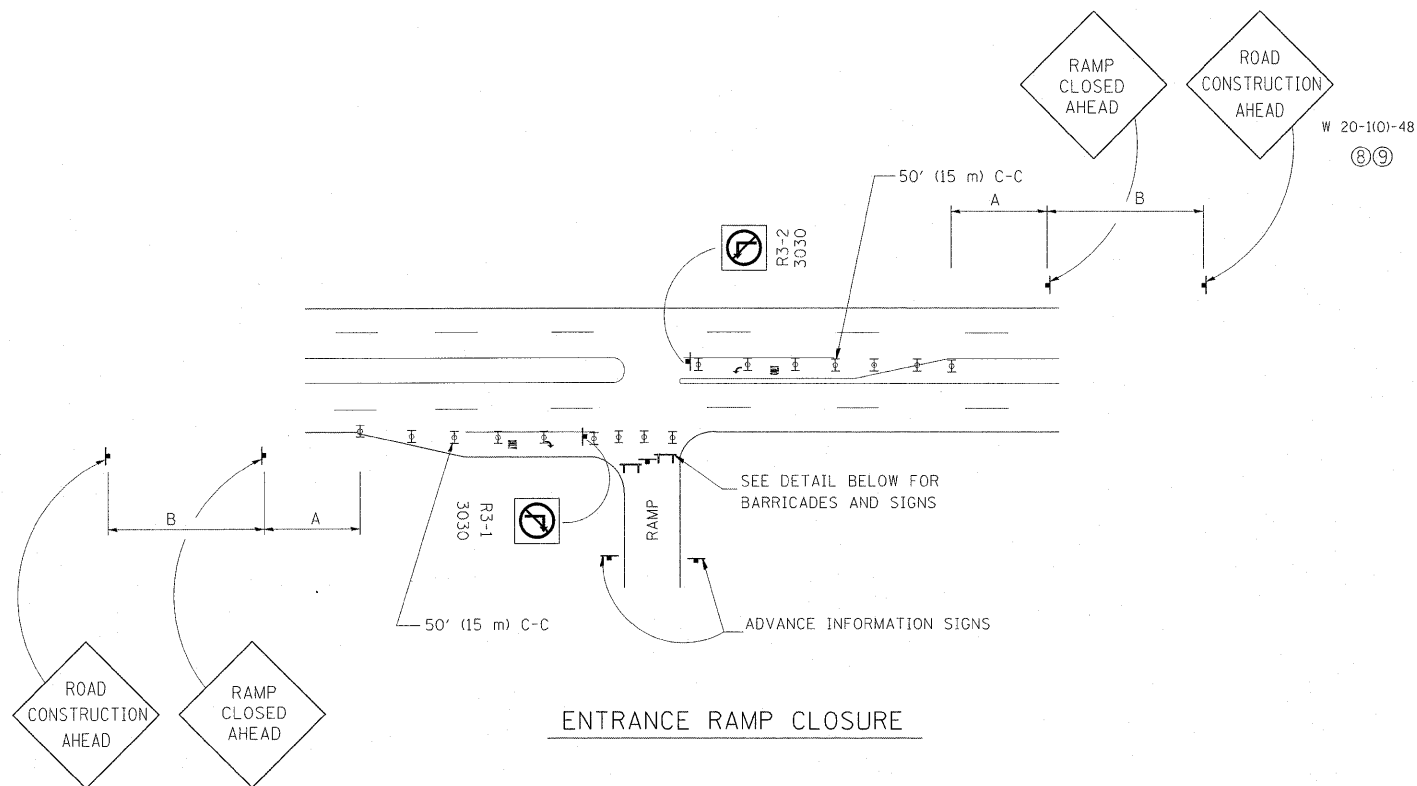
BASIS OF PAYMENT:

THIS WORK WILL BE PAID FOR AT THE CONTRACT UNIT PRICE PER FOOT (METER) FOR "CURB REMOVAL AND REPLACEMENT" OR "COMBINATION CONCRETE CURB AND GUTTER REMOVAL AND REPLACEMENT".

CURB OR CURB AND GUTTER REMOVAL AND REPLACEMENT

ALL DIMENSIONS ARE IN INCHES (MILLIMETERS) UNLESS OTHERWISE SHOWN.

FILE NAME =	USER NAME = Hamdanah	DESIGNED - A. HOUSEH	REVISED - R. SHAH 10-03-96	STATE OF ILLINOIS DEPARTMENT OF TRANSPORTATION	CURB OR CURB AND GUTTER REMOVAL AND REPLACEMENT			F.A.I. RTE.	SECTION	COUNTY	TOTAL SHEETS	SHEET NO.
es:\pwork\puidot\hamdanah\08264490\01	Std.dgn	DRAWN -	REVISED - A. ABBAS 03-21-97		57	99-I-RA-WRS	WILL	14	13			
PLOT SCALE = 50.0000' / IN.	CHECKED -	REVISED - M. GOMEZ 01-22-01	REVISED - R. BORO 12-15-09		BD600-06 (BD-24)			CONTRACT NO. 60P08				
PLOT DATE = 4/12/2011	DATE - 03-11-94				SCALE: NONE		SHEET NO. 1 OF 1 SHEETS	STA.	TO STA.	FED. ROAD DIST. NO. 1 ILLINOIS FED. AID PROJECT		

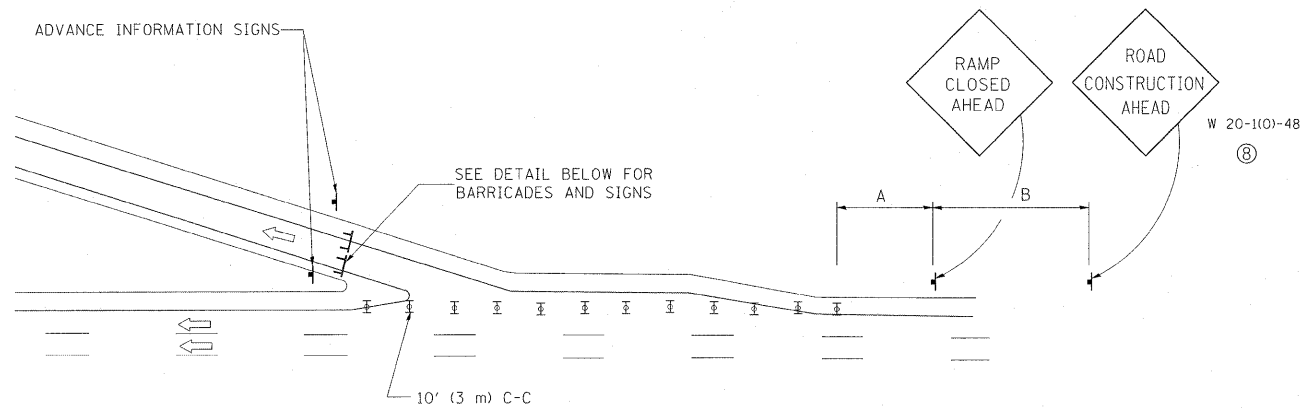


ENTRANCE RAMP CLOSURE

SIGN SPACING TABLE

FACILITY	DISTANCE BETWEEN SIGNS	
	A	B
EXPRESSWAY >24 HOURS	1000' (300 m)	1500' (450 m)
EXPRESSWAY ≤24 HOURS	500' (150 m)	500' (150 m)
ARTERIAL ≥45 MPH	350' (100 m)	350' (100 m)
ARTERIAL <45 MPH	150' (45 m)	150' (45 m)

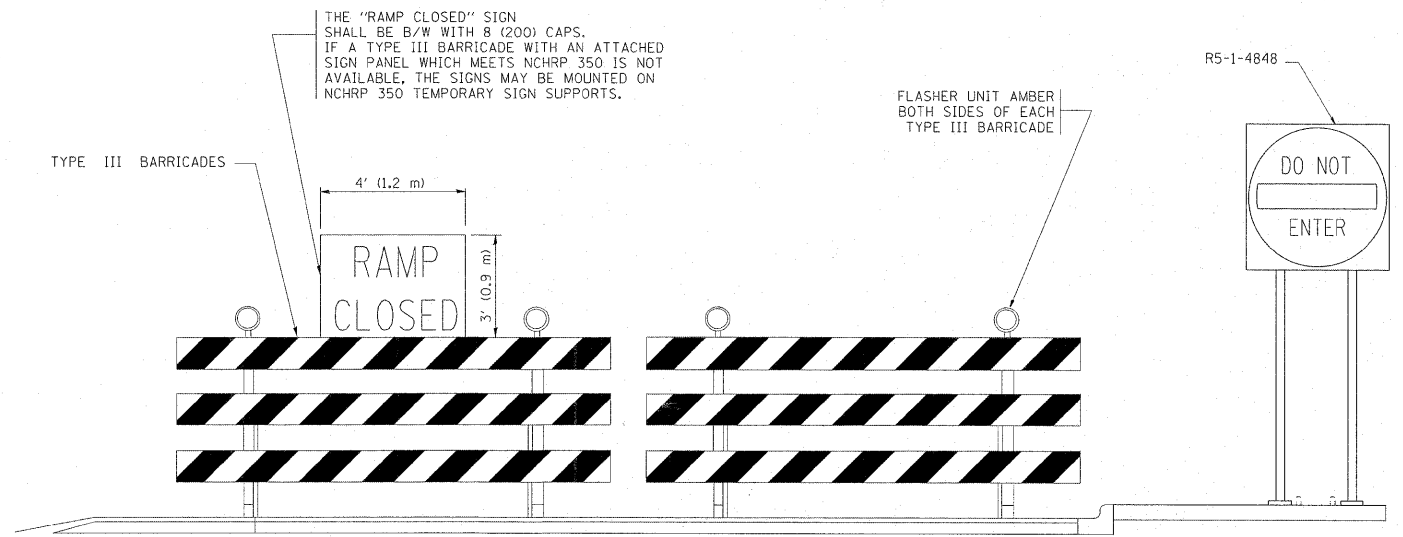
DISTANCES MAY BE SHORTENED DEPENDING UPON THE PROXIMITY OF ADJACENT RAMPS OR INTERSECTIONS.



EXIT RAMP CLOSURE

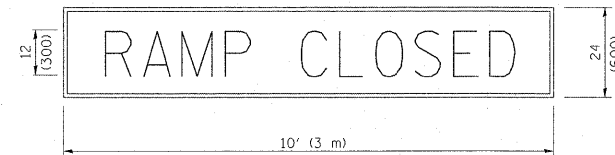
SYMBOLS

- ⊥ TYPE II BARRICADE, DRUM OR VERTICAL BARRICADE WITH STEADY BURN MONO-DIRECTIONAL LIGHT
- ⊥ TYPE III BARRICADE WITH FLASHING LIGHT



DETAIL FOR REQUIRED BARRICADES & SIGNS

RAMP CLOSURE ADVANCE WARNING SIGN

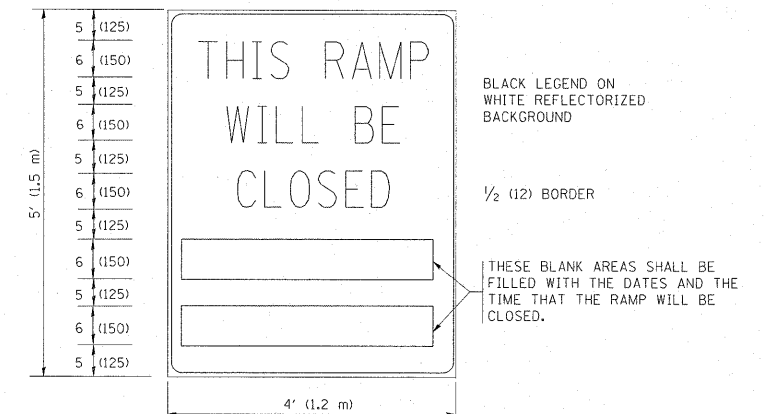


BLACK LEGEND ON ORANGE REFLECTORIZED BACKGROUND

1 (25) BORDER

THESE SIGNS ARE REQUIRED ON ALL THE EXIT GUIDE SIGNS FOR THE CLOSED EXIT RAMPS.

RAMP CLOSURE ADVANCE INFORMATION SIGN



THESE SIGNS ARE REQUIRED ON BOTH SIDES OF THE RAMP, MINIMUM OF 1 WEEK IN ADVANCE OF THE CLOSURE.

GENERAL NOTES:

- ① CONES MAY BE SUBSTITUTED FOR DRUMS OR TYPE II BARRICADES DURING DAY OPERATIONS. CONES SHALL BE A MINIMUM OF 28 (700) HIGH.
- ② STEADY BURN LIGHTS WILL NOT BE REQUIRED FOR DAY OPERATIONS.
- ③ A FLAGGER SHALL BE POSITIONED AT EACH CLOSED RAMP THAT IS OPEN TO CONSTRUCTION VEHICLES.
- ④ ALL ROUTE MARKERS AND TRAILBLAZER ASSEMBLIES WHICH DIRECT MOTORISTS TO A CLOSED ENTRANCE RAMP SHALL BE COVERED.
- ⑤ THE SIGNING AND BARRICADE WHICH IS REQUIRED BY THIS DETAIL SHALL BE INCLUDED IN THE COST OF TRAFFIC CONTROL AND PROTECTION (EXPRESSWAYS).
- ⑥ AUTHORIZATION FROM THE DISTRICT'S BUREAU OF TRAFFIC IS REQUIRED FOR ALL RAMP CLOSURES.
- ⑦ THE RAMP CLOSURE ADVANCE INFORMATION SIGNS SHALL BE ERECTED IF THE CLOSURE TIME EXCEEDS TWENTY-FOUR (24) HOURS. ADDITIONAL ADVANCE WARNING SIGNS ON EXIT GUIDE SIGNING WILL BE REQUIRED FOR EXIT RAMP CLOSURES THAT EXCEED TWENTY-FOUR (24) HOURS IN LENGTH.
- ⑧ ROAD CONSTRUCTION AHEAD SIGNS MAY BE OMITTED WHEN THIS DETAIL IS USED IN CONJUNCTION WITH OTHER TRAFFIC CONTROL THAT ALREADY INCLUDES A ROAD CONSTRUCTION AHEAD SIGN.
- ⑨ ARTERIAL ROAD CONSTRUCTION AHEAD SIGNS MAY BE OMITTED ON CLOSURES LESS THAN 24 HOURS IN DURATION.

ALL DIMENSIONS ARE IN INCHES (MILLIMETERS) UNLESS OTHERWISE SHOWN.

FILE NAME =	USER NAME = Hamdanah	DESIGNED - DWS	REVISED - DWS/JAF 12-02
et:\pw\work\pwsdot\hamdanah\d264498\Di...	Std.dgn	DRAWN -	REVISED - JAF 02-06
PLOT SCALE = 50,0000' / IN.		CHECKED -	REVISED - SPB 01-07
PLOT DATE = 4/12/2011		DATE - 02-83	REVISED - SPB 12-09

**STATE OF ILLINOIS
DEPARTMENT OF TRANSPORTATION**

**FREWAY ENTRANCE AND EXIT RAMP
CLOSURE DETAILS**

SCALE: NONE SHEET NO. 1 OF 1 SHEETS STA. TO STA.

F.A.I. RTE.	SECTION	COUNTY	TOTAL SHEETS	SHEET NO.
57	99-I-RA-WRS	WILL	14	14
TC-08			CONTRACT NO. 60P08	
FED. ROAD DIST. NO. 1 ILLINOIS FED. AID PROJECT				