

STATE OF ILLINOIS  
DEPARTMENT OF TRANSPORTATION  
DIVISION OF HIGHWAYS

**PROPOSED HIGHWAY PLANS**

F.A.I. ROUTE 57: I-57 AT  
PRAIRIE VIEW REST AREA IN PEOTONE  
SECTION: 99-1-RA-WRS  
REST AREA IMPROVEMENT  
WILL COUNTY  
C-91-461-11

F.A.I. RTE.	SECTION	COUNTY	TOTAL SHEETS	SHEET NO.
57	99-1-RA-WRS	WILL	14	1
		ILLINOIS	CONTRACT NO. 60P08	

\*14 + 2 = 16

D-91-461-11

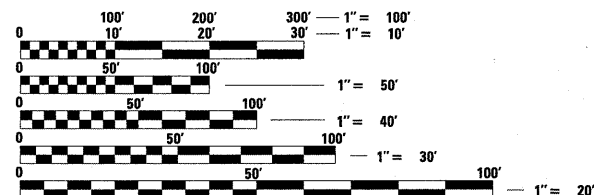


FOR INDEX OF SHEETS, SEE SHEET NO. 2

THE IMPROVEMENT IS LOCATED IN THE VILLAGE OF PEOTONE

**TRAFFIC DATA**

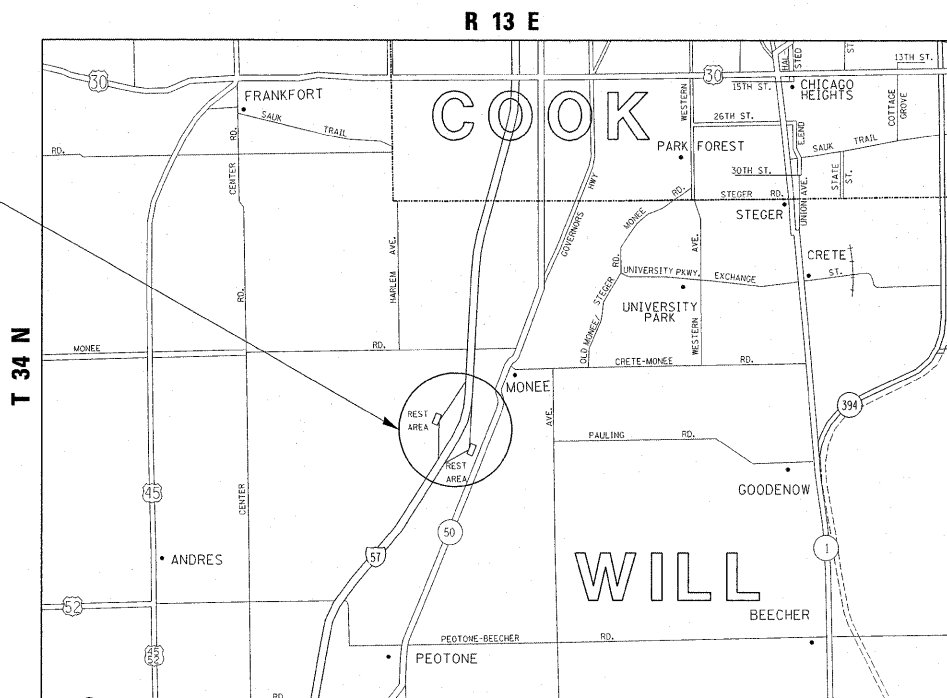
ADT (2010) = 30,600  
POSTED SPEED LIMIT = 55 MPH



FULL SIZE PLANS HAVE BEEN PREPARED USING STANDARD ENGINEERING SCALES. REDUCED SIZED PLANS WILL NOT CONFORM TO STANDARD SCALES. IN MAKING MEASUREMENTS ON REDUCED PLANS, THE ABOVE SCALES MAY BE USED.

J.U.L.I.E.  
JOINT UTILITY LOCATION INFORMATION FOR EXCAVATION  
1-800-892-0123  
OR 811

IMPROVEMENT LOCATION



GROSS LENGTH = 1,923 FT. = 0.364 MILE  
NET LENGTH = 1,923 FT. = 0.364 MILE

PROJECT ENGINEER ROBERT BORO (847)705-4178  
PROJECT MANAGER ISSAM RAYYAN

CONTRACT NO. 60P08

STATE OF ILLINOIS  
DEPARTMENT OF TRANSPORTATION  
DIVISION OF HIGHWAYS

SUBMITTED APRIL 12, 20 11

Diane M. O'Keefe  
DEPUTY DIRECTOR OF HIGHWAYS, REGION ENGINEER

May 13 20 11  
Scott E. Stitt, P.E.  
Acting ENGINEER OF DESIGN AND ENVIRONMENT

May 13 20 11  
Christine M. Reed  
DIRECTOR OF HIGHWAYS, CHIEF ENGINEER

**PRINTED BY THE AUTHORITY OF THE STATE OF ILLINOIS**