

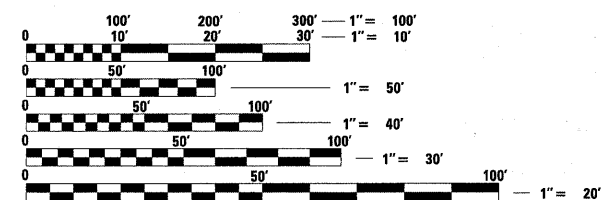
STATE OF ILLINOIS
DEPARTMENT OF TRANSPORTATION
DIVISION OF HIGHWAYS

**PROPOSED
HIGHWAY PLANS**

FAU ROUTE 2722: 17TH AVENUE
MADISON AVENUE TO 22ND STREET
SECTION: 2010-160-RS
PROJECT: M-2722(001)
RESURFACING
COOK COUNTY
C-91-344-11

FOR INDEX OF SHEETS, SEE SHEET NO. 2

PROJECT IS LOCATED IN
THE VILLAGES OF
BROADVIEW & MAYWOOD



FULL SIZE PLANS HAVE BEEN PREPARED USING STANDARD ENGINEERING SCALES. REDUCED SIZED PLANS WILL NOT CONFORM TO STANDARD SCALES. IN MAKING MEASUREMENTS ON REDUCED PLANS, THE ABOVE SCALES MAY BE USED.

J.U.L.I.E.
JOINT UTILITY LOCATION INFORMATION FOR EXCAVATION
1-800-892-0123
OR 811

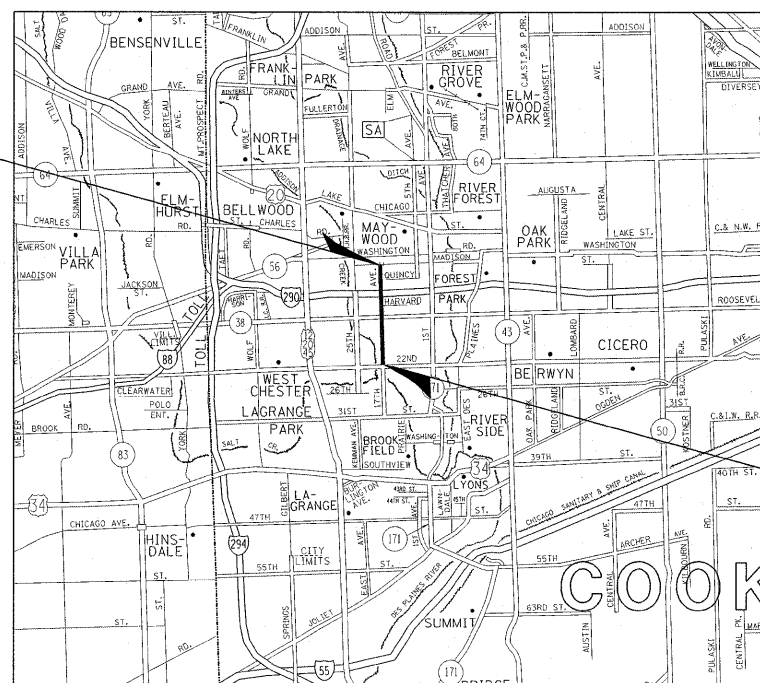
PROJECT ENGINEER: DAN WILGREEN (847) 705-4240
PROJECT MANAGER: KEN ENG

CONTRACT NO. 60N74

PROJECT ENDS:
STATION 116 + 15

OMISSIONS:
36 + 26 TO 36 + 51
61 + 66 TO 63 + 60
87 + 06 TO 89 + 65

T39N



PROVISO TOWNSHIP

GROSS LENGTH = 10568 FEET = 2.00 MILES
NET LENGTH = 10139 FEET = 1.92 MILES

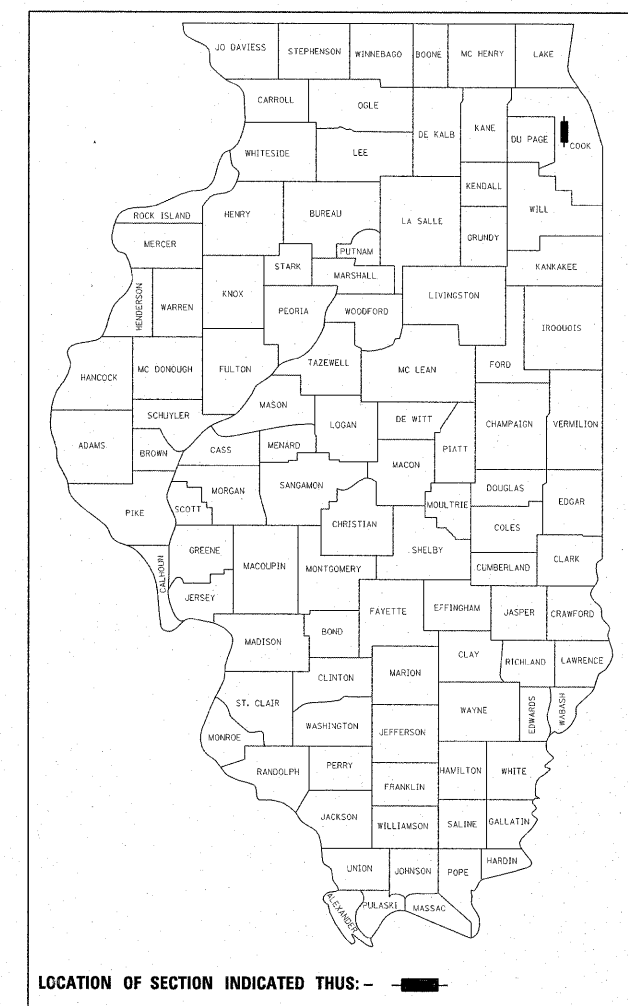


TRAFFIC DATA:
SPEED LIMIT = 30 - 35 MPH
2010 ADT = 10,100

PROJECT BEGINS:
STATION 10 + 47

F.A. RTE.	SECTION	COUNTY	TOTAL SHEETS	SHEET NO.
2722	2010-160-RS	COOK	25	1
		ILLINOIS	CONTRACT NO. 60N74	

D-91-344-11



LOCATION OF SECTION INDICATED THUS: - [black rectangle] -

STATE OF ILLINOIS
DEPARTMENT OF TRANSPORTATION
DIVISION OF HIGHWAYS

SUBMITTED MARCH 30, 2011
Diane M. O'Keefe
DEPUTY DIRECTOR OF HIGHWAYS, REGION ENGINEER
May 13 2011
Scott E. Stitt, P.E.
Acting ENGINEER OF DESIGN AND ENVIRONMENT
May 13 2011
Christine M. Reed
DIRECTOR OF HIGHWAYS, CHIEF ENGINEER

PRINTED BY THE AUTHORITY
OF THE STATE OF ILLINOIS