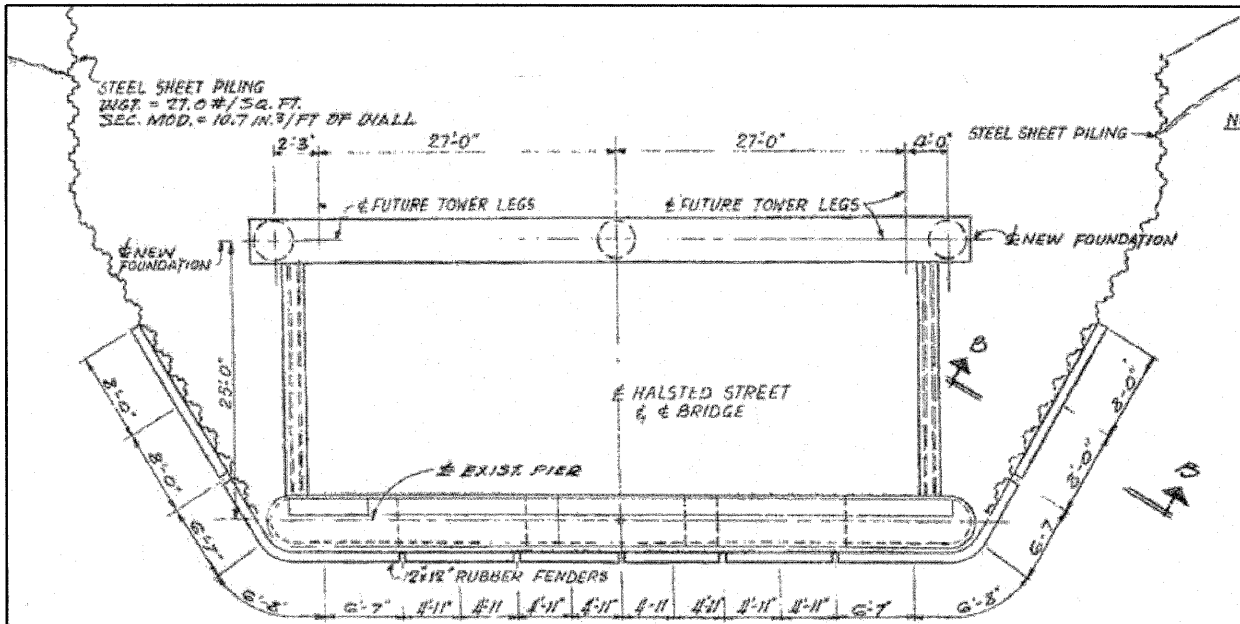


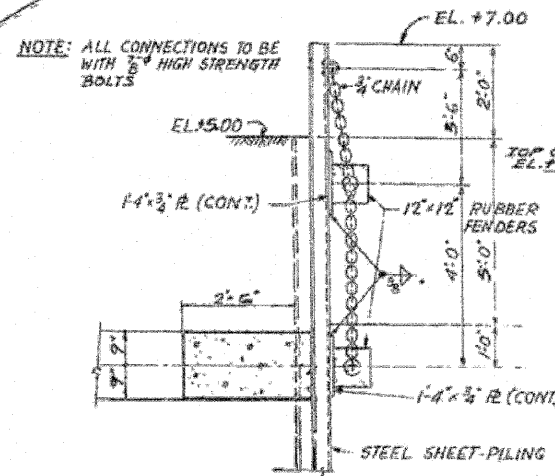
BILL OF MATERIAL

BAR MARK	No.	SIZE	LENGTH	SHAPE
d1	66	#6	2'-0"	—
d2	6	#6	3'-0"	—
h10	24	#9	11'-9"	—
U5	33	#5	7'-6"	—
U6	3	#5	10'-0"	—
V5	5	#5	2'-6"	—
CLASS 'X' CONCRETE CU.YDS.				16.4
REINFORCEMENT BARS LBS.				810
POROUS GRANULAR EMBANKMENT CU.YDS.				150
RUBBER FENDERS (PIER PROTECTION) L.S.				1

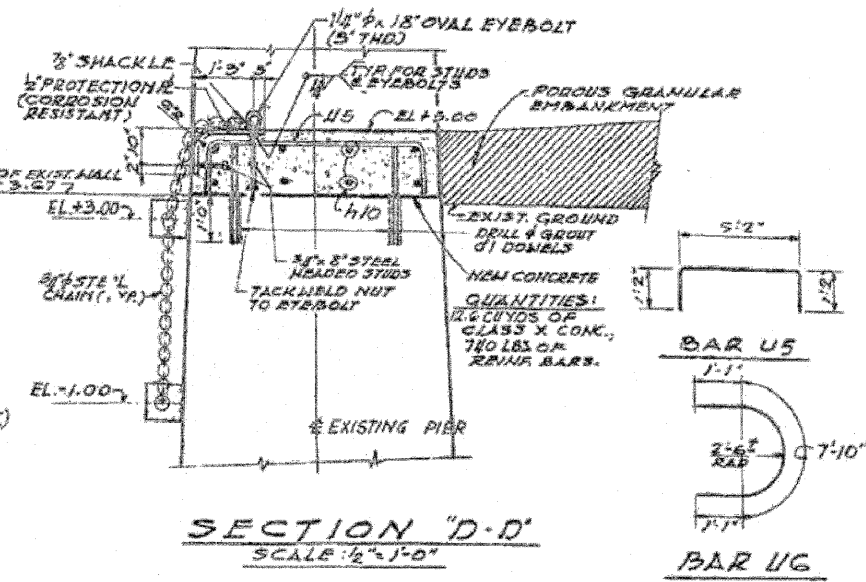


PLAN

NOTE!
FOR DIMENSIONS OF STEEL SHEET PILING AND DETAILS SEE PLAN SHG.6

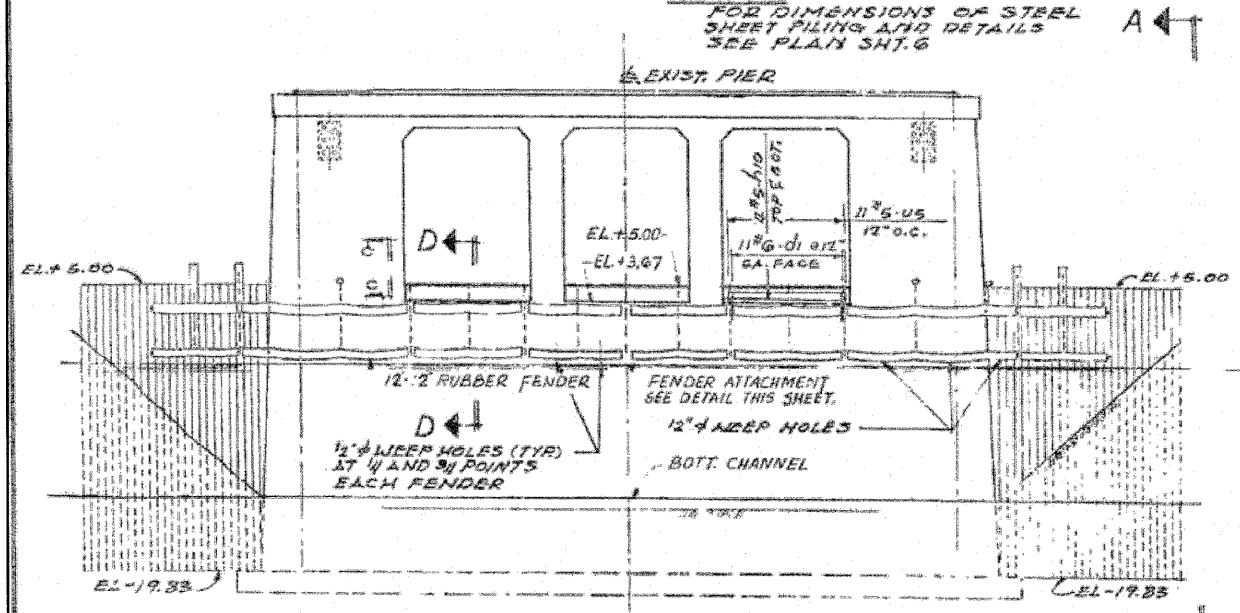


SECTION B-B
SCALE: 1/2" = 1'-0"

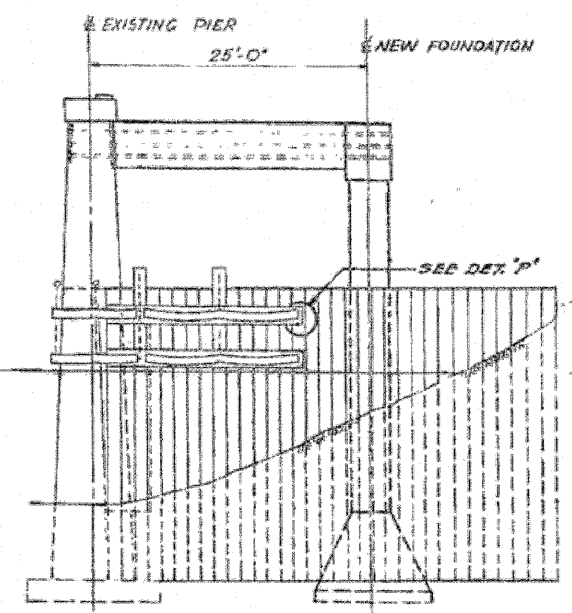


SECTION "D-D"
SCALE: 1/2" = 1'-0"

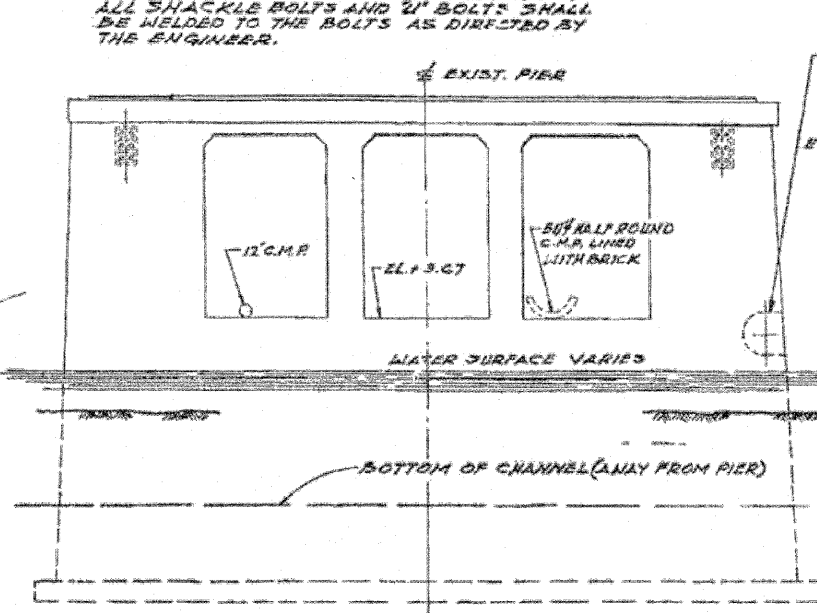
NOTE:
AFTER THE INSTALLATION OF THE RUBBER FENDERS HAS BEEN COMPLETED AND APPROVED BY THE ENGINEER THE NUTS OF ALL SHACKLE BOLTS AND "U" BOLTS SHALL BE WELDED TO THE BOLTS AS DIRECTED BY THE ENGINEER.



ELEVATION SOUTH PIER
LOOKING SOUTH
SCALE: 1/4" = 1'-0"

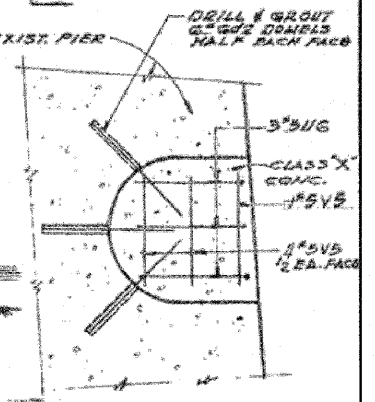


END ELEVATION A-A
SCALE: 1/4" = 1'-0"

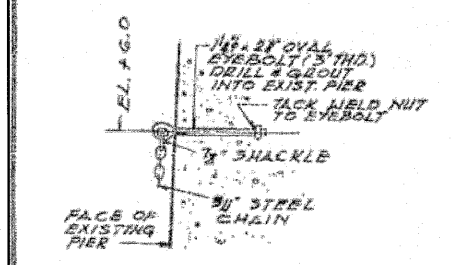


ELEVATION NORTH PIER
LOOKING NORTH
SCALE: 1/4" = 1'-0"

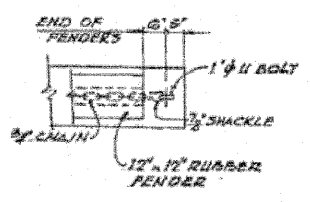
FILL OF P.G. FOR ABANDONED 30" WATER MAIN WITH REINF. CONCRETE QUANTITIES 3.8 CU.YDS. OF CLASS 'X' CONC., 70 LBS. OF REINF. BARS.



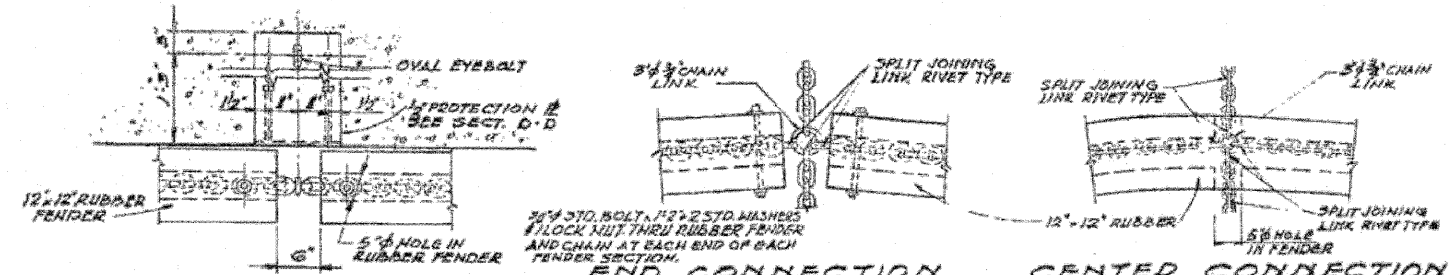
DETAIL "M"
SCALE: 1/2" = 1'-0"



SECTION "C-C"



DETAIL "P"
SCALE: 1/2" = 1'-0"



DETAIL OF RUBBER FENDER ATTACHMENT

NOTE:
JOIN SHORTER CHAINS TO LONG CHAIN PRIOR TO INSERTION OF LONG CHAIN INTO FENDER - PULL SHORT CHAINS THROUGH HOLES IN FENDER WITH HOOP DURING ASSEMBLY.

FOR INFORMATION ONLY

ALFRED BENESCH & COMPANY CONSULTING ENGINEERS
10 SOUTH WABASH AVE CHICAGO, ILLINOIS

REVISED - JAN. 5, 1966

ILLINOIS DIVISION OF HIGHWAYS
CALUMET-SAG NAVIGATION PROJECT
HALSTED STREET BRIDGE CONVERSION
PIER PROTECTION DETAILS

SCALE: AS NOTED DATE: NOV. 22, 1965

FILE NAME =	USER NAME =	DESIGNED - AMS	REVISED -
		CHECKED - AMS	REVISED -
		DRAWN - DR	REVISED -
		CHECKED - AMS	REVISED -

STATE OF ILLINOIS
DEPARTMENT OF TRANSPORTATION

FENDER SYSTEM DETAILS
STRUCTURE NO. 016-0193

F.A.U. RTE.	SECTION	COUNTY	TOTAL SHEETS	SHEET NO.
3730	KIB&C2-BR-1	COOK	14	11

CONTRACT NO. 60M84
ILLINOIS FED. AID PROJECT

SHEET NO. 58 OF 58 SHEETS