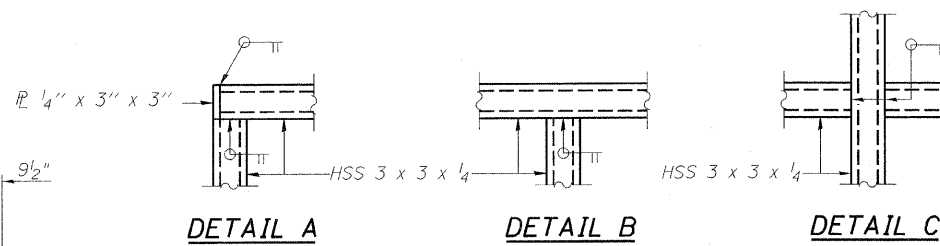


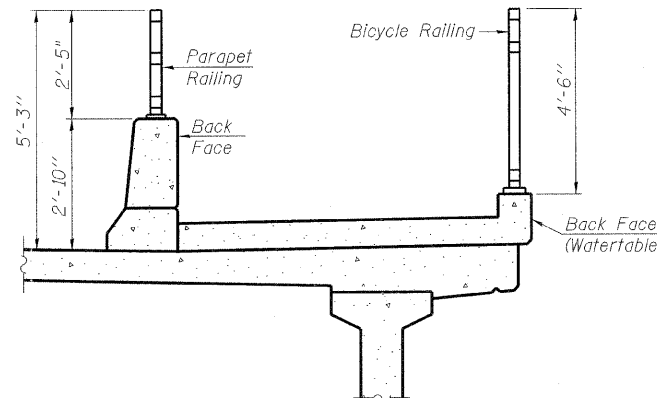
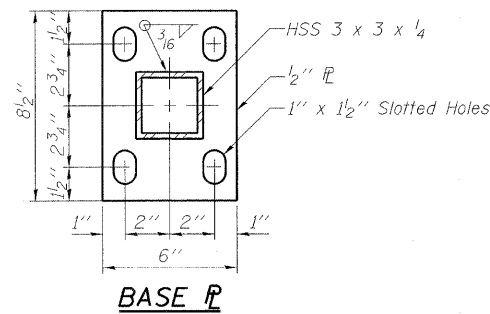
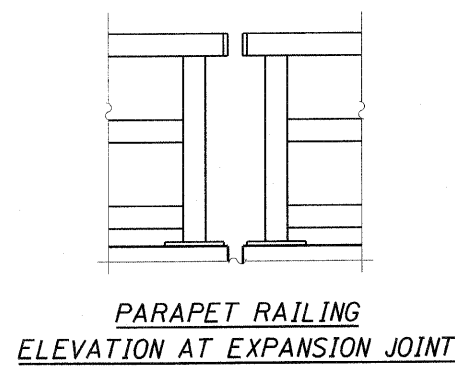
SECTION A-A



All steel rail elements shall be galvanized according to Article 509.05 of the Standard Specifications.

BILL OF MATERIAL

Symbol	Item	Unit	Quantity
▨	Structural Repair of Concrete, (Depth Greater Than 5")	Sq. Ft.	18
	Parapet Railing	Foot	44
	Bridge Railing Removal	Foot	44

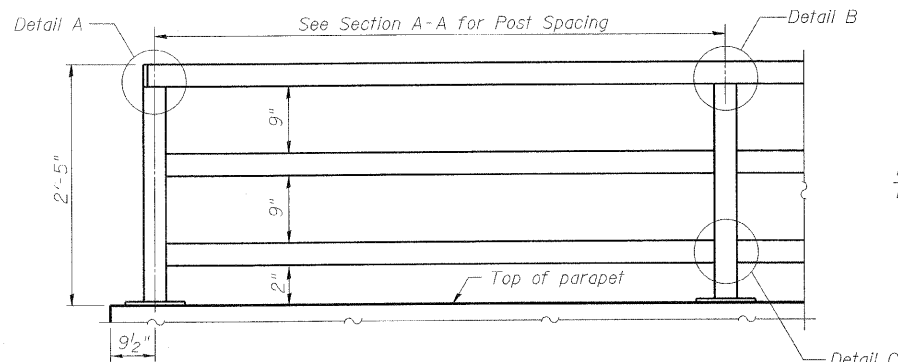


SECTION THRU SIDEWALK AT APPROACH SPAN

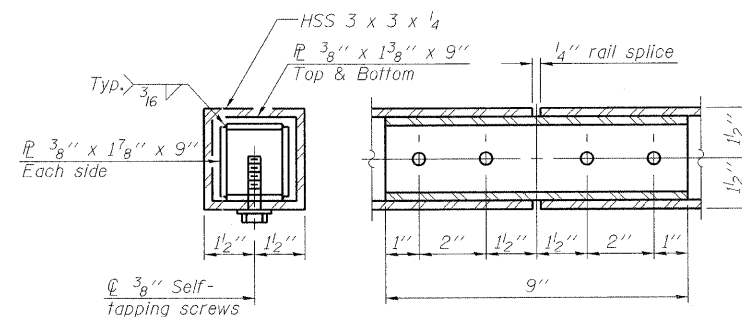
Notes:

Contractor shall field verify rail and post spacing prior to fabrication of new parapet railing. The proposed Parapet Railing shall match the existing parapet railing.

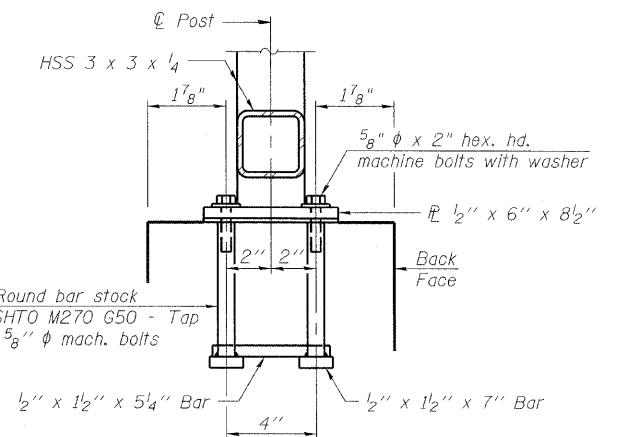
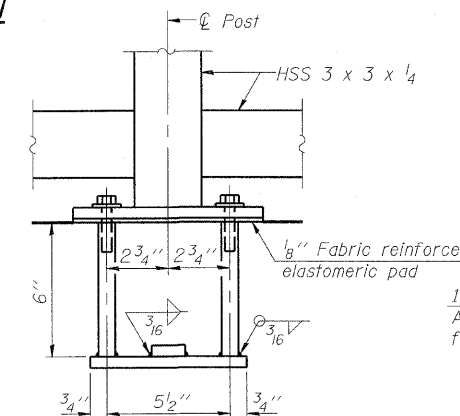
Contractor shall remove the rail in the manner that does not damage existing connections. Anchor bolts determined to be unsuitable for reuse by the Engineer during rail removal shall be replaced according to the details below. Cost is included with Parapet Railing.



(Inside Face of Three Element Rail)



RAIL SPLICE



ANCHOR BOLT DETAILS

In lieu of the cast-in-place anchor device shown, the Contractor has the option of drilling and setting 5/8" ϕ anchor rods according to Article 509.06 of the Standard Specifications. Embedment shall be according to the manufacturer's specifications.

FILE NAME =	USER NAME =	DESIGNED - AMS	REVISD -	STATE OF ILLINOIS DEPARTMENT OF TRANSPORTATION	PARAPET RAILING STRUCTURE NO. 016-0193	F.A.U. RTE.	SECTION	COUNTY	TOTAL SHEETS	SHEET NO.	
		CHECKED - AMS	REVISD -			3730	KIB&C2-BR-1	COOK	16	7	
		DRAWN - DR	REVISD -			CONTRACT NO. 60M84					
		CHECKED - AMS	REVISD -			ILLINOIS FED. AID PROJECT					