

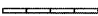


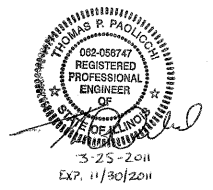
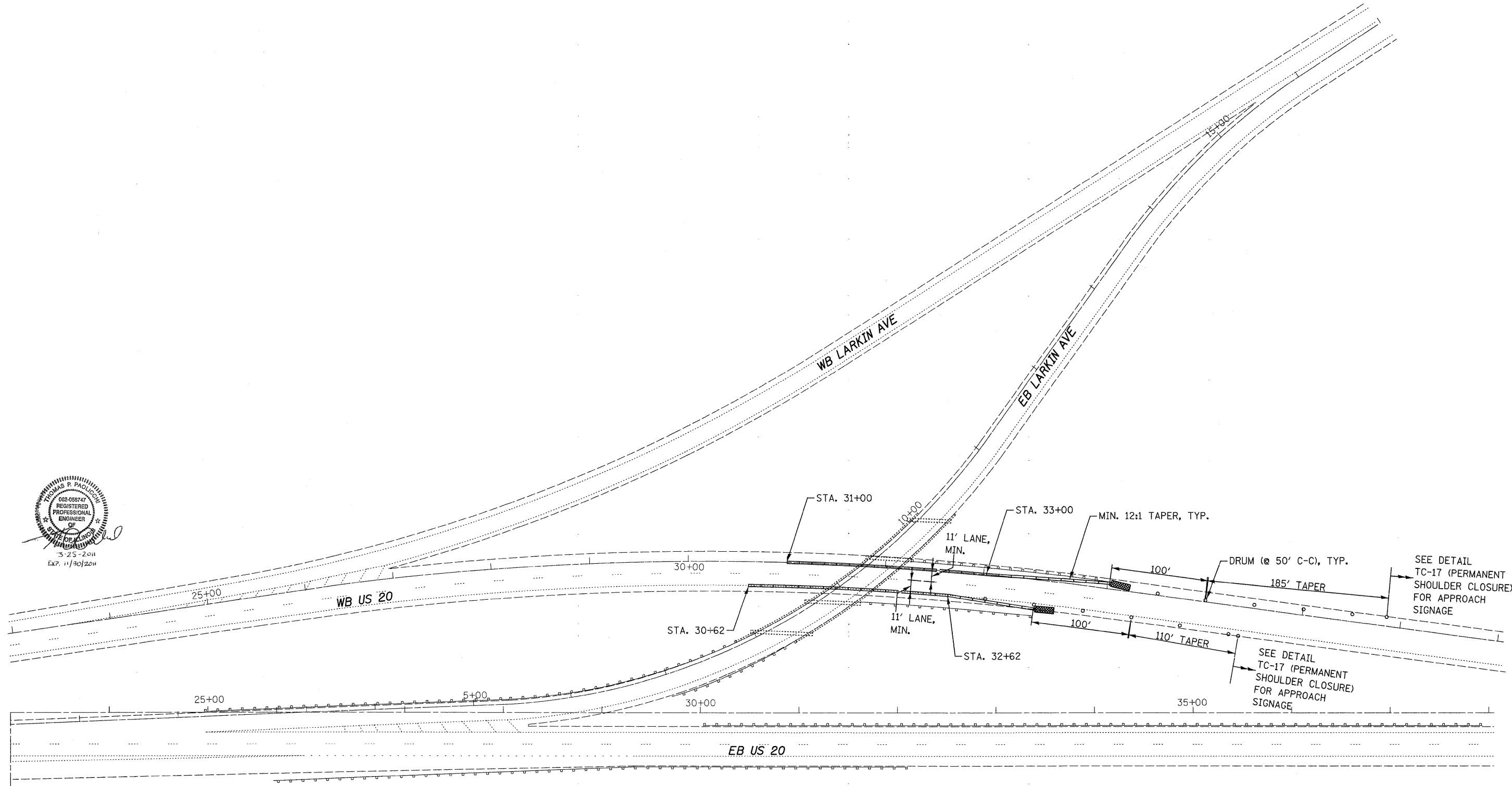
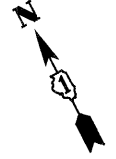
3/24/2011 2:15:11 PM J:\2009\246 IDOT PTB 153 Item 21\Cadd\Design\045-0008\Files from Chicago\Files sent 03-24-11\045-0008 MOT.dgn

**NOTES:**

1. USE IDOT STANDARDS 701400-06 AND 701401-06 TO PROVIDE LANE CLOSURES FOR INSTALLATION AND REMOVAL OF PROTECTIVE SHIELD UNDERNEATH BRIDGE.
2. ERECT TEMPORARY CONSTRUCTION SIGNS FOR PERMANENT SHOULDER CLOSURES.
3. INSTALL TEMPORARY MOT FOR PERMANENT SHOULDER CLOSURES FOR REMOVAL & REPLACEMENT OF EXISTING BEARINGS. REFER TO DETAIL TC-17 FOR MORE INFORMATION.
4. REFER TO BRIDGE DETOUR PLAN FOR MORE INFORMATION.

**LEGEND**

-  IMPACT ATTENUATOR, TEMPORARY (NON-REDIRECTIVE), TEST LEVEL 3
-  DRUM WITH MONO-DIRECTIONAL STEADY BURNING LIGHT @ SPACING SHOWN
-  TEMPORARY CONCRETE BARRIER



9901 S. Western Ave.  
 Chicago, IL 60643  
 Ph. 773-881-4788  
 F: 773-239-3728

DESIGNED	TPP	REVISED	-
CHECKED	RJL	REVISED	-
DRAWN	JS	REVISED	-
CHECKED	TPP	REVISED	-

**STATE OF ILLINOIS**  
**DEPARTMENT OF TRANSPORTATION**

**EB LARKIN AVE RAMP OVER WB US 20**  
**SN. 045-0008**  
 SCALE: 1" = 50' SHEET NO. OF SHEETS

**SUGGESTED MAINTENANCE**  
**OF TRAFFIC**  
 STA. TO STA.

F.A.U. RTE.	SECTION	COUNTY	TOTAL SHEETS	SHEET NO.
2423	BR-HR-1(82)	KANE	124	109
CONTRACT NO. 60M46			ILLINOIS FED. AID PROJECT	