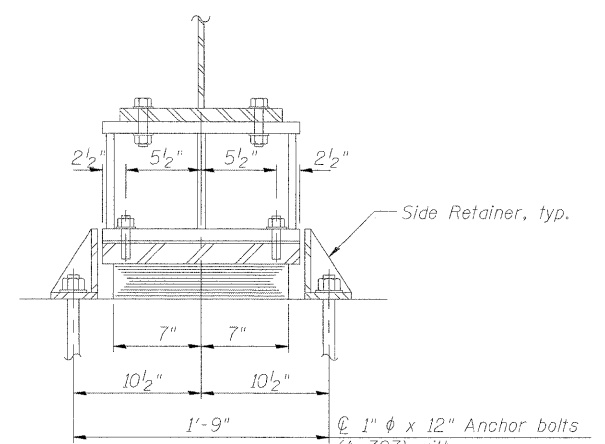
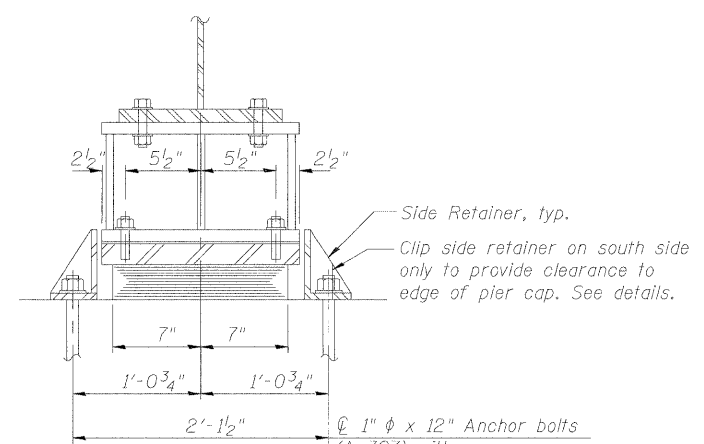


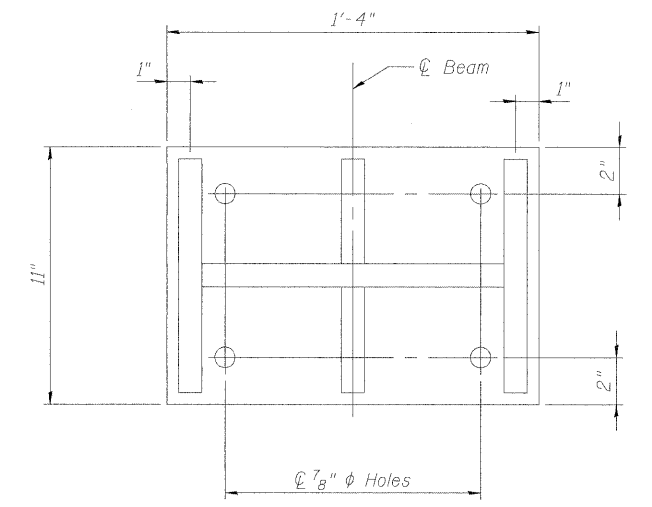
ELEVATION AT ABUT. OR PIER 2



SECTION A-A AT ABUTMENTS

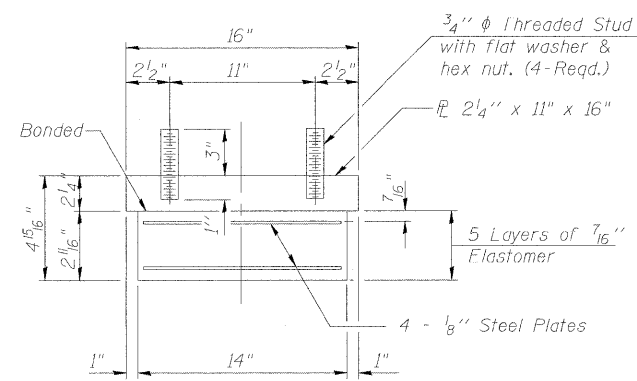


SECTION A-A AT PIER 2



PLAN STEEL EXTENSION

TYPE I ELASTOMERIC EXP. BRG.



BEARING ASSEMBLY

Note: Shim plates shall not be placed under Bearing Assembly.

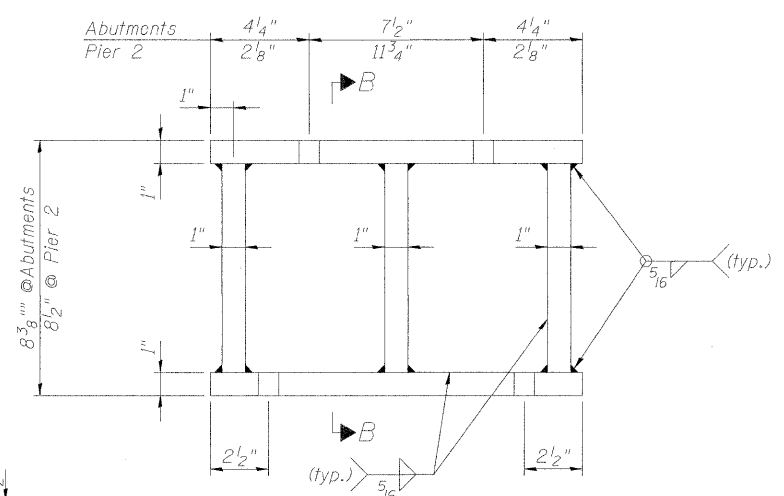
NOTES

Anchor bolts shall be ASTM F1554 all-thread (or an Engineer-approved alternate material) of the grade(s) and diameter(s) specified. ASTM A307 Grade C anchor bolts may be used in lieu of ASTM F1554 Grade 36 (Fy=36ksi). The corresponding specified grade of AASHTO M314 anchor bolts may be used in lieu of ASTM F1554.
Anchor bolts for side retainers may be cast in place or installed in holes drilled before or after members are in place.
Drilled and set anchor bolts shall be installed according to Article 521.06 of the Standard Specifications.
Side retainers and other steel members required for the bearing assembly shall be included in the cost of Elastomeric Bearing Assembly, Type I.
All new structural steel shall be shop painted with an inorganic zinc rich primer per AASHTO M 300, Type 1.
Two 1/8" adjusting shims shall be provided for each bearing in addition to all other plates or shims and placed as shown on bearing details.

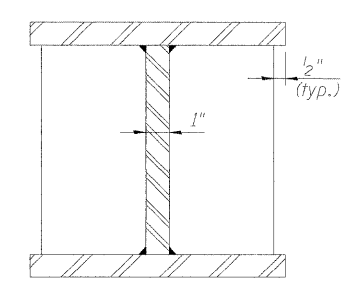
REACTION TABLE (KIPS)

Type	W. Abut.	Pier 2	E. Abut.
R DL	29.6	36.5	25.7
R LL	60.2	62.7	59.7
R Total	89.8	99.2	85.4

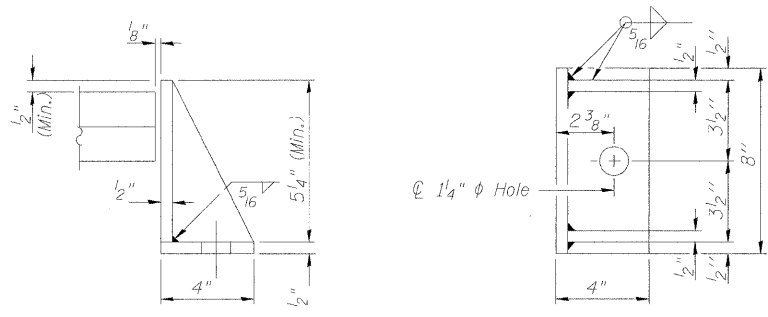
Note: Reactions at Pier 2 are end reactions for replacement bearings on Span 2 side only.



ELEVATION STEEL EXTENSION

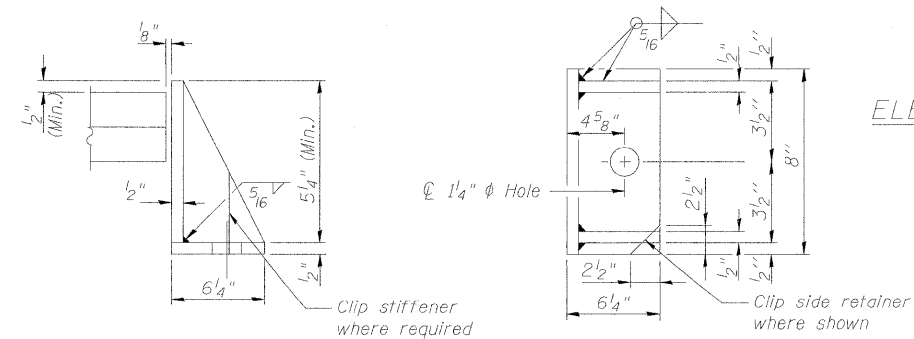


SECTION B-B



SIDE RETAINER AT ABUTMENTS

Equivalent rolled angle with stiffeners will be allowed in lieu of welded plates.



SIDE RETAINER AT PIER 2

Equivalent rolled angle with stiffeners will be allowed in lieu of welded plates.

BILL OF MATERIAL

Item	Unit	Total
Elastomeric Bearing Assembly, Type I	Each	15
Anchor Bolts, 1"	Each	30
Furnishing and Erecting Structural Steel	Pound	2700



9901 S. Western Ave.
Chicago, IL 60643
Ph. 773-881-4788
F: 773.239.3728

DESIGNED - TBS
CHECKED - RJL
DRAWN - JJE
CHECKED - TBS

REVISED -
REVISED -
REVISED -
REVISED -

STATE OF ILLINOIS
DEPARTMENT OF TRANSPORTATION

BEARING & FABRICATED STEEL EXTENSION DETAILS

SHEET NO. 8 OF 8 SHEETS

F.A.U. RTE.	SECTION	COUNTY	TOTAL SHEETS	SHEET NO.
426	BR-HR-1(82)	KANE	124	108
STA. TO STA.	CONTRACT NO. 60M46			
FED. ROAD DIST. NO.	ILLINOIS FED. AID PROJECT			