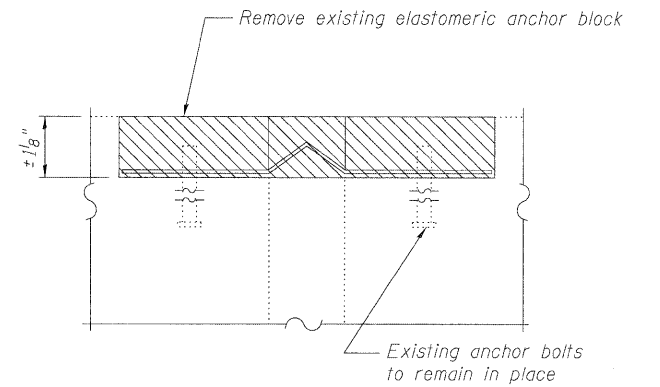
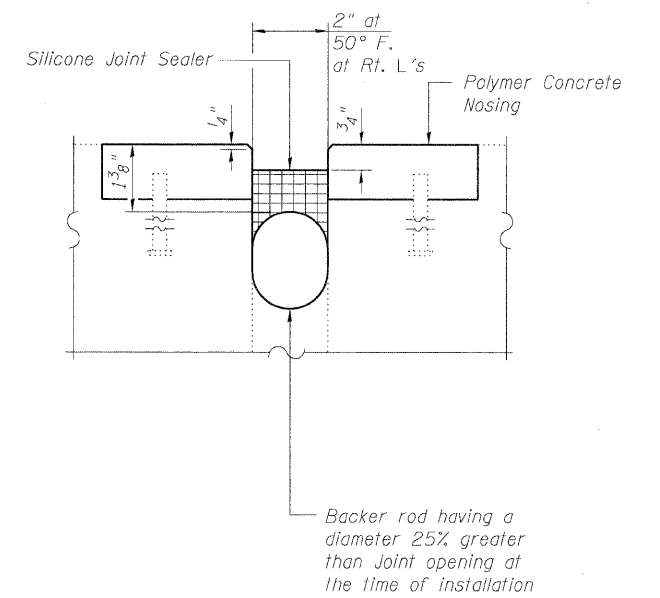


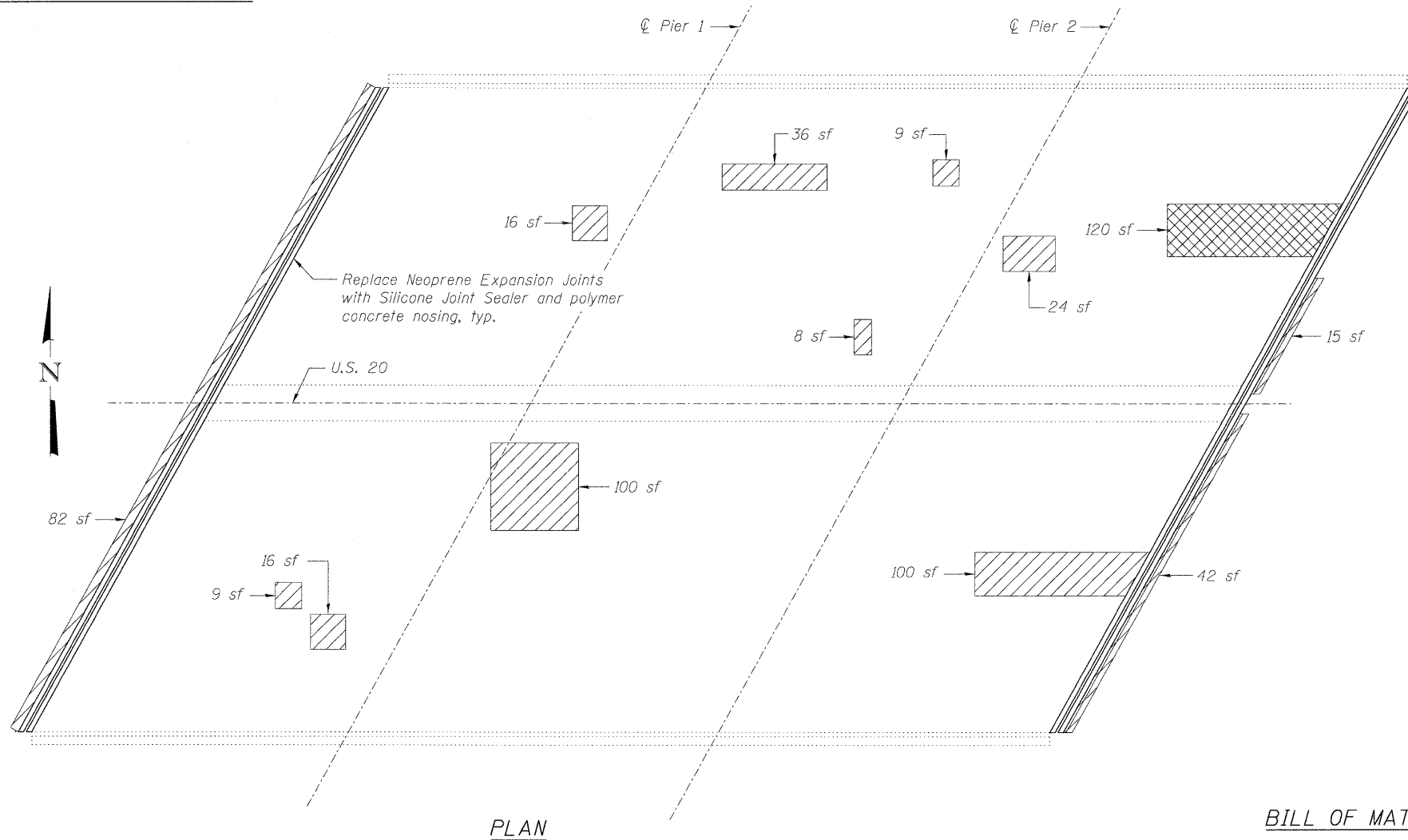
SILICONE JOINT SEALER END TREATMENT



EXISTING JOINT DETAIL @ ABUTMENTS



PROPOSED JOINT DETAIL @ ABUTMENTS



PLAN

BILL OF MATERIAL

ITEM	UNIT	TOTAL
Silicone Joint Sealer, 2"	Foot	167
Polymer Concrete	Cu. Ft.	11.4
Deck Slab Repair (Partial)	Sq. Yd.	50.8
Deck Slab Repair (Full Depth, Type II)	Sq. Yd.	13.3

LEGEND

- Removal of Existing Joint material
- Deck Slab Repair (Full Depth, Type II)
- Deck Slab Repair (Partial)
- sf Square Feet

Notes:

Repair of the existing deck slab shall include but may not be limited to the areas shown. The actual area to be repaired will be determined by the Engineer at the time of construction.
 Cost of concrete overlay removal for deck slab repair is included with the cost of Deck Slab Repair.
 Cost of existing joint removal is included in the cost of Silicone Joint Sealer.



USER NAME =	DESIGNED - TBP	REVISED -
FILE NAME =	CHECKED - ADB	REVISED -
PLOT SCALE =	DRAWN - AJF	REVISED -
PLOT DATE =	CHECKED - MTH	REVISED -

**STATE OF ILLINOIS
DEPARTMENT OF TRANSPORTATION**

**SUPERSTRUCTURE REPAIR
STRUCTURE NO. 016-0217**

SHEET NO. 3 OF 4 SHEETS

F.A.P. RTE. 345	SECTION BR-1-RS-4	COUNTY COOK	TOTAL SHEETS 124	SHEET NO. 92
CONTRACT NO. 60M46			ILLINOIS FED. AID PROJECT	