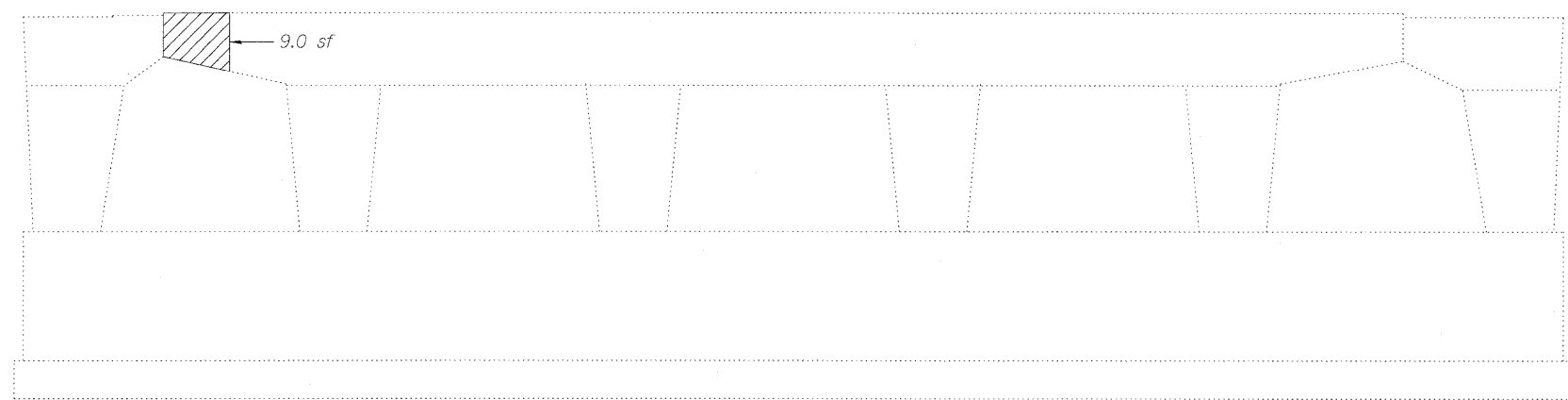
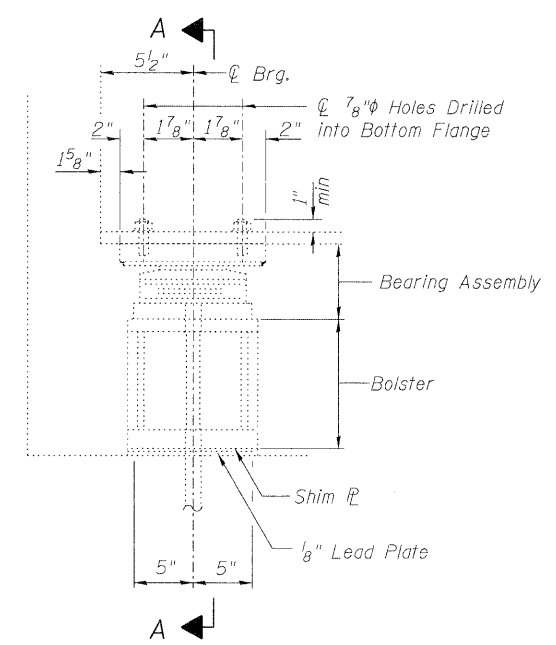


Existing Bearing information shown below for information only.



PIER 1
(East Face)

Note:
Repair of the existing abutment and pier shall include but may not be limited to the areas shown. The actual areas to be repaired will be determined by the Engineer at the time of Construction.

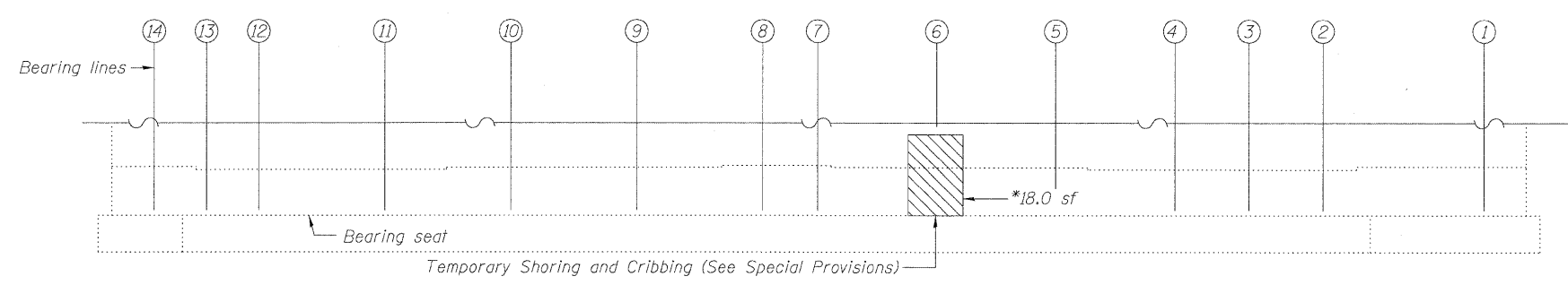


ELEVATION AT ABUTS.

BEAM REACTION TABLE

Dead Load (k)	17.0
Live Load (k)	41.0
Impact (k)	12.2

Min. Jack Capacity = 35 tons

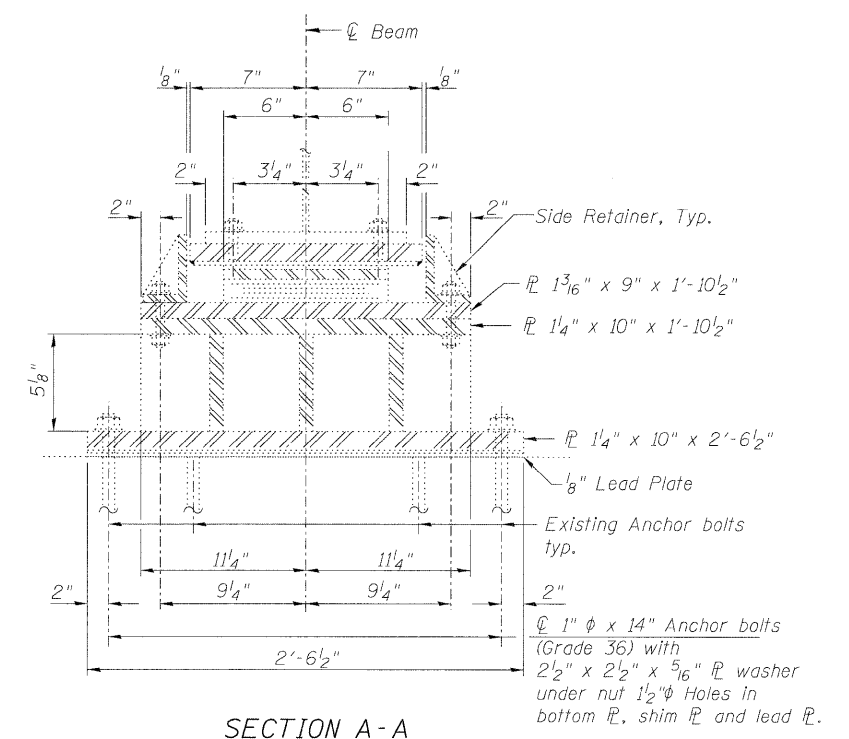


WEST ABUTMENT ELEVATION

*Repair required underneath bearing. Removal and reinstallation is required. This work shall be performed during Stage II construction and prior to deck repairs. Care shall be taken not to damage existing anchor bolts. Once the concrete has attained the required strength and the curing period is complete, the bearing shall be reinstalled and the cribbing shall be removed. Cost included with Structural Repair of Concrete.

LEGEND

- Structural Repair of Concrete (Depth equal to or less than 5 in.)
- sf Square Feet



SECTION A-A

BILL OF MATERIAL

ITEM	UNIT	TOTAL
Structural Repair of Concrete (Depth equal to or less than 5 in.)	Sq. Ft.	27
Temporary Shoring and Cribbing	Each	1