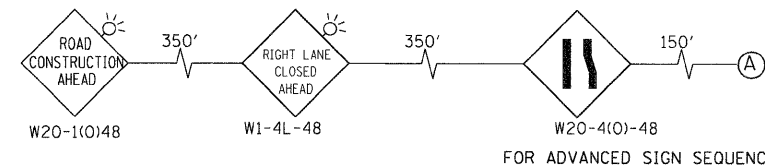
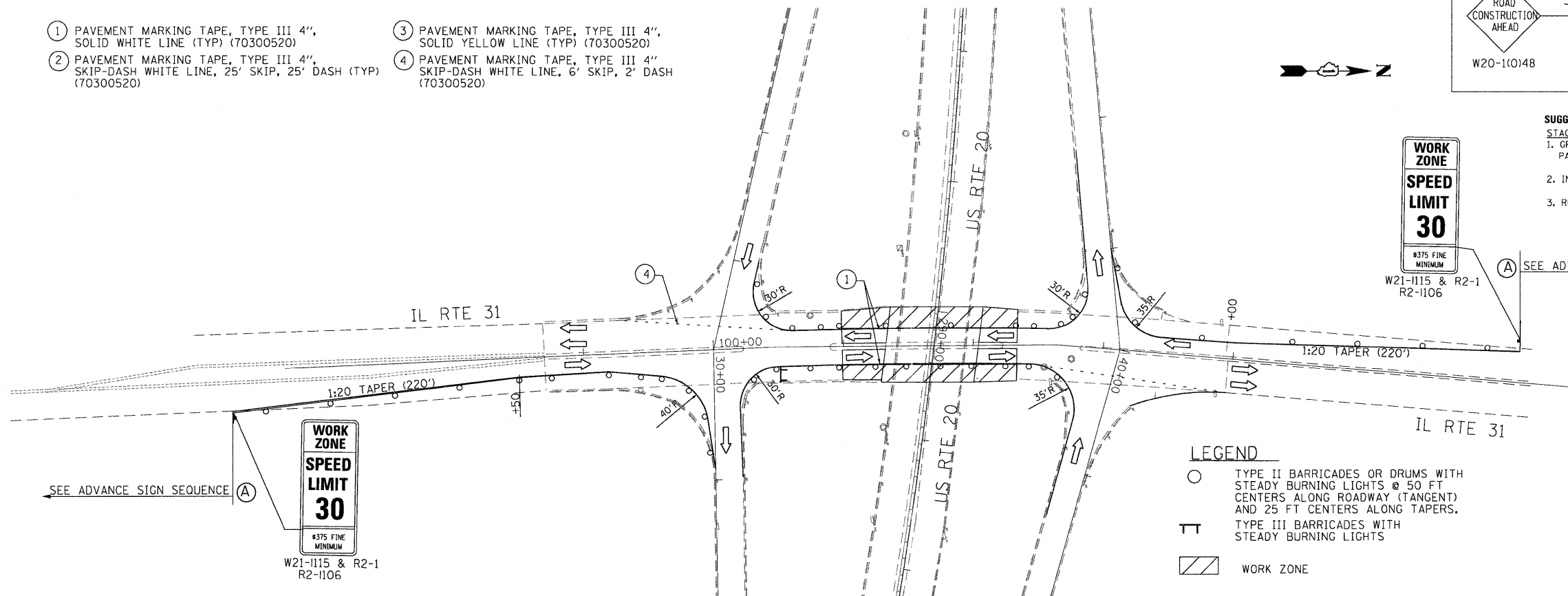


- ① PAVEMENT MARKING TAPE, TYPE III 4", SOLID WHITE LINE (TYP) (70300520)
- ② PAVEMENT MARKING TAPE, TYPE III 4", SKIP-DASH WHITE LINE, 25' SKIP, 25' DASH (TYP) (70300520)
- ③ PAVEMENT MARKING TAPE, TYPE III 4", SOLID YELLOW LINE (TYP) (70300520)
- ④ PAVEMENT MARKING TAPE, TYPE III 4", SKIP-DASH WHITE LINE, 6' SKIP, 2' DASH (TYP) (70300520)



**SUGGESTED CONSTRUCTION STAGING**

- STAGE I**
- GRIND OFF EXISTING PAVEMENT MARKINGS IN CONFLICT WITH TEMPORARY PAVEMENT MARKINGS.
  - INSTALL STAGE I TRAFFIC CONTROL
  - REPAIR OF EXISTING DECK SLAB



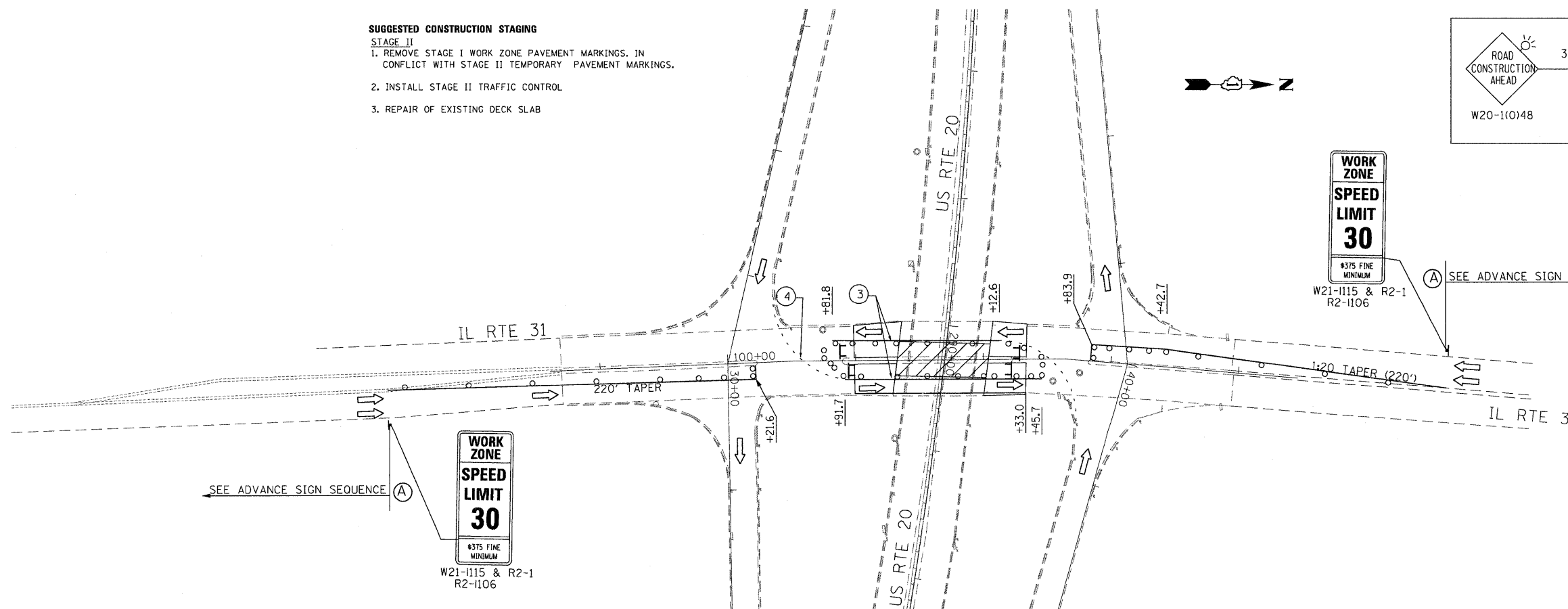
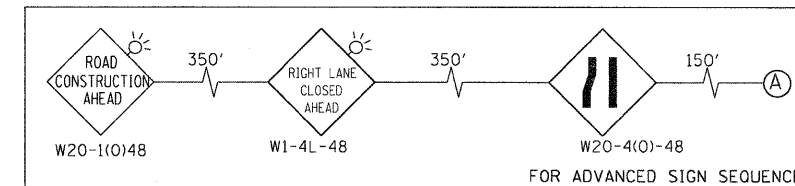
**LEGEND**

- TYPE II BARRICADES OR DRUMS WITH STEADY BURNING LIGHTS @ 50 FT CENTERS ALONG ROADWAY (TANGENT) AND 25 FT CENTERS ALONG TAPERS.
- ⊥ TYPE III BARRICADES WITH STEADY BURNING LIGHTS
- ▨ WORK ZONE

**STAGE I**

**SUGGESTED CONSTRUCTION STAGING**

- STAGE II**
- REMOVE STAGE I WORK ZONE PAVEMENT MARKINGS. IN CONFLICT WITH STAGE II TEMPORARY PAVEMENT MARKINGS.
  - INSTALL STAGE II TRAFFIC CONTROL
  - REPAIR OF EXISTING DECK SLAB



**STAGE II**

FILE NAME : P:\2009\me091906-ver-ver-phi\ceadd\wo2\us20\shas\DI60M46-MDT-ST31.dgn  
 USER : JRM  
 USER NAME : Millennium Professional Services



200 22ND Street, Suite 216, Lombard, IL 60148  
 630.765.6110 voice, 630.839.2566 fax  
 www.mps-ll.com

**MILLENNIA PROFESSIONAL SERVICES**

DESIGNED - CJD	REVISED -
DRAWN - CJD	REVISED -
CHECKED - TVN	REVISED -
DATE - 4/1/2011	REVISED -

**STATE OF ILLINOIS  
 DEPARTMENT OF TRANSPORTATION**

**US ROUTE 20 (LAKE STREET)  
 RANDALL RD TO SHALES PARKWAY**

**SUGGESTED STAGES OF CONSTRUCTION  
 AND TRAFFIC CONTROL  
 IL RTE 31 OVER US RTE 20**

SCALE: SHEET NO. OF SHEETS STA. TO STA.

F.A.P. RTE.	SECTION	COUNTY	TOTAL SHEETS	SHEET NO.
345	BR-1-RS-4	KANE/COOK	124	65
				CONTRACT NO. 60M46

FED. ROAD DIST. NO. 1 ILLINOIS FED. AID PROJECT