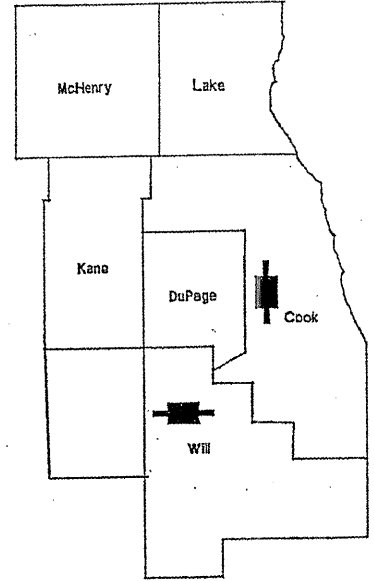


ROUTE	SECTION	COUNTY	TOTAL SHEETS	SHEET NUMBER
FAU 2697 FAP 607	2010-055 BP	COOK AND WILL	20	1

FOR INDEX OF SHEETS SEE SHEET 2

CONTRACT NO. 60L30

D-91-678-10



LOCATION OF IMPROVEMENT INDICATED THUS:

IMPROVEMENTS ARE LOCATED IN THE VILLAGE OF WILLOW SPRINGS AND IN JOLIET TOWNSHIP

STATE OF ILLINOIS  
DEPARTMENT OF TRANSPORTATION  
DIVISION OF HIGHWAYS  
DISTRICT ONE  
**PROPOSED HIGHWAY PLANS**

LOC 1) FAU RTE. 2697: WILLOW SPRINGS RD  
OVER THE S&S AND I&M CANALS & RR  
AND DESPLAINES RIVER (SN 016-0540)

LOC 2) FAP 607: US 30 (CASS ST.)  
OVER HICKORY CREEK (SN 099-0105)  
SECTION 2010-055 BP  
BRIDGE PAINTING  
COOK AND WILL COUNTIES  
C-91-678-10

STATE OF ILLINOIS  
DEPARTMENT OF TRANSPORTATION  
DIVISION OF HIGHWAYS  
SUBMITTED: MARCH 10, 2011  
Diane M. O'Keefe *or*  
DEPUTY DIRECTOR OF HIGHWAYS, REGION ENGINEER  
May 13 2011  
Scott E. Stitt, P.E.  
*acting* ENGINEER OF DESIGN AND ENVIRONMENT  
May 13 2011  
Christine M. Peeler  
DIRECTOR, DIVISION OF HIGHWAYS

PRINTED BY THE AUTHORITY  
OF THE STATE OF ILLINOIS

J.U.L.I.E.: JOINT UTILITY LOCATION  
INFORMATION FOR EXCAVATION  
(800) 892-0123 OR 811

PROJECT ENGINEER ROBERT BORO (847) 705-4178  
PROJECT MANAGER ISSAM RAYYAN

CONTRACT NO. 60L30

ROUTE	SECTION	COUNTY	TOTAL SHEETS	SHEET NUMBER
FAU 2697 FAP 607	2010-055 BP	COOK AND WILL	20	2

CONTRACT NO. 60L30

**INDEX OF SHEETS**

- 1 TITLE SHEET
- 2 INDEX OF SHEETS, STATE STANDARDS AND GENERAL NOTES
- 3 GENERAL PAINT NOTES
- 4 SUMMARY OF QUANTITIES
- 5-6 LOCATION MAPS
- 7-15 EXISTING BRIDGE PLANS (BRIDGE NO. 1, SN 016-0540)
- 16-18 EXISTING BRIDGE PLANS (BRIDGE NO. 2, SN 099-0105)
- 19 TRAFFIC CONTROL FOR SHOULDERS CLOSURES AND PARTIAL RAMP CLOSURES (TC-17)
- 20 ARTERIAL ROAD INFORMATION SIGN (TC-22)

**STATE STANDARDS**

- 701101-02 MULTILANE OFF-ROAD OPERATIONS, 15' TO 24" FROM PAVEMENT EDGE
- 701201-04 LANE CLOSURE, 2L, 2W, DAY ONLY, FOR SPEEDS GREATER THAN OR EQUAL TO 45 MPH.
- 701301-04 LANE CLOSURE, 2L, 2W, SHORT TIME OPERATIONS
- 701601-07 URBAN LANE CLOSURE, MULTILANE, 1W OR 2W WITH NONTRAVERSABLE MEDIUM
- 701901-01 TRAFFIC CONTROL DEVICES

**GENERAL NOTES**

BEFORE STARTING ANY EXCAVATION, THE CONTRACTOR SHALL CALL "J.U.L.I.E." AT (800) 892-0123 OR 811 FOR FIELD LOCATIONS OF BURIED ELECTRIC, TELEPHONE AND GAS UTILITIES. 48 HOURS NOTIFICATION IS REQUIRED.

THE CONTRACTOR SHALL COORDINATE CONSTRUCTION ACTIVITIES WITH UTILITY COMPANIES, THE VILLAGE OF WILLOW SPRINGS AND JOLIET TOWNSHIP.

IT SHALL BE THE CONTRACTOR'S RESPONSIBILITY TO VERIFY ALL DIMENSIONS & CONDITIONS EXISTING IN THE FIELD PRIOR TO CONSTRUCTION & ORDERING OF MATERIALS.

THE CONTRACTOR WILL NOT BE ALLOWED TO SET UP A YARD OR FIELD OFFICE ON STATE PROPERTY WITHOUT WRITTEN PERMISSION FROM THE DEPARTMENT.

THE CONTRACTOR SHALL CONTACT THE DISTRICT ONE TRAFFIC CONTROL SUPERVISOR AT (847) 705-4470 FOR ARTERIALS A MINIMUM OF 72 HOURS IN ADVANCE OF BEGINNING WORK.

THE CONTRACTOR SHALL BE REQUIRED TO PROVIDE ACCESS TO ABUTTING PROPERTY AT ALL TIMES DURING THE CONSTRUCTION OF THIS PROJECT.

DO NOT SCALE PLANS FOR CONSTRUCTION DIMENSIONS.

IT SHALL BE THE CONTRACTOR'S RESPONSIBILITY TO PROTECT AND PRESERVE THE EXISTING BRIDGE LIGHTING AT ANY LOCATIONS THAT LIGHTING IS ENCOUNTERED ADJACENT TO AN AREA TO BE CLEANED AND PAINTED.

ILLINOIS DEPARTMENT OF  
TRANSPORTATION

GENERAL NOTES  
INDEX OF SHEETS  
STATE STANDARDS

ROUTE	SECTION	COUNTY	TOTAL SHEETS	SHEET NUMBER
FAU 2697 FAP 607	2010-055 BP	COOK AND WILL	20	3

CONTRACT NO. 60L30

**GENERAL NOTES FOR PAINT**

CLEANING AND PAINTING OF THE EXISTING STRUCTURAL STEEL SHALL BE AS SPECIFIED IN THE SPECIAL PROVISION FOR "CLEANING AND PAINTING EXISTING STEEL STRUCTURES".

A MINIMUM OF THREE (3) AT LOCATION 1 (SN 016-0540), AND FOUR (4) AT LOCATION 2 (SN 099-0105) AIR MONITORS WILL BE REQUIRED TO MONITOR ABRASIVE BLASTING OPERATIONS FOR ALL STRUCTURES. SEE SPECIAL PROVISION FOR "CONTAINMENT AND DISPOSAL OF LEAD PAINT CLEANING RESIDUE."

THE AREAS DESIGNATED TO BE CLEANED PER NEAR WHITE BLAST CLEANING SSPC-SP10 SHALL BE PAINTED ACCORDING TO THE REQUIREMENTS OF PAINT SYSTEM 1 - OZ/E/U. THE COLOR OF THE FINAL FINISH COAT FOR ALL INTERIOR STEEL SURFACES SHALL BE GRAY, MUNSELL NO. 5B 7/1. AT LOCATION 1 (SN 016-0540), THE COLOR OF THE FINAL FINISH COAT FOR THE EXTERIOR AND BOTTOM FLANGE OF THE BEAMS SHALL BE INTERSTATE GREEN, MUNSELL NO. 7.5G 4/8. AT LOCATION 2 (SN 099-0105) THE COLOR OF THE FINAL FINISH COAT FOR THE EXTERIOR AND BOTTOM FLANGE OF THE BEAMS SHALL BE REDDISH BROWN, MUNSELL NO. 2.5YR 3/4.

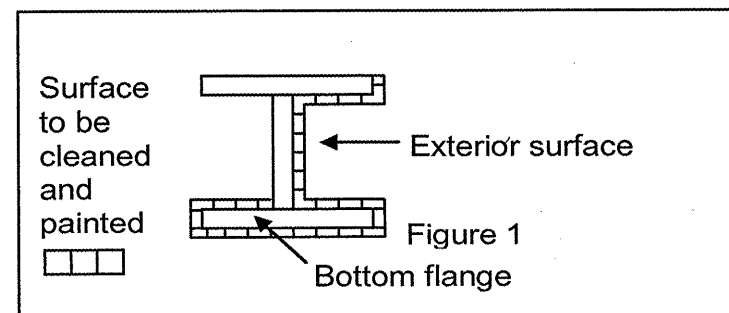
ALL ITEMS (SUCH AS, BUT NOT LIMITED TO: CONDUITS, BRACKETS AND DECK DRAINS) ATTACHED TO THE OUTSIDE OF THE FASCIA BEAMS SHOULD BE CLEANED AND PAINTED.

**FOR LOCATION NO. 1 (SN 016-0540)**

ALL BEAMS, BEARINGS AND OTHER STRUCTURAL STEEL WITHIN TEN (10) FT., (MEASURED ALONG THE BEAM) OF EITHER SIDE OF ALL DECK JOINTS, SHALL BE CLEANED PER NEAR WHITE BLAST CLEANING SSPC-SP10.

**FOR LOCATION NO. 2 (SN 099-0105)**

ALL BEAMS, BEARINGS AND OTHER STRUCTURAL STEEL WITHIN FIVE (5) FT., (MEASURED ALONG THE BEAM) OF EITHER SIDE OF ALL DECK JOINTS, SHALL BE CLEANED PER NEAR WHITE BLAST CLEANING SSPC-SP10. THE EXTERIOR SURFACES AND TOP AND BOTTOM OF THE BOTTOM FLANGE OF THE FASCIA BEAMS (SEE FIGURE 1) SHALL BE CLEANED PER NEAR WHITE BLAST CLEANING SSPC-SP10.



**FASCIA BEAM PAINTING DETAIL**

**FIGURE 1**

ILLINOIS DEPARTMENT OF TRANSPORTATION

GENERAL PAINT NOTES

ROUTE	SECTION	COUNTY	TOTAL SHEETS	SHEET NUMBER
FAU 2697 FAP 607	2010-055 BP	COOK AND WILL	20	4

CONTRACT NO. 60L30

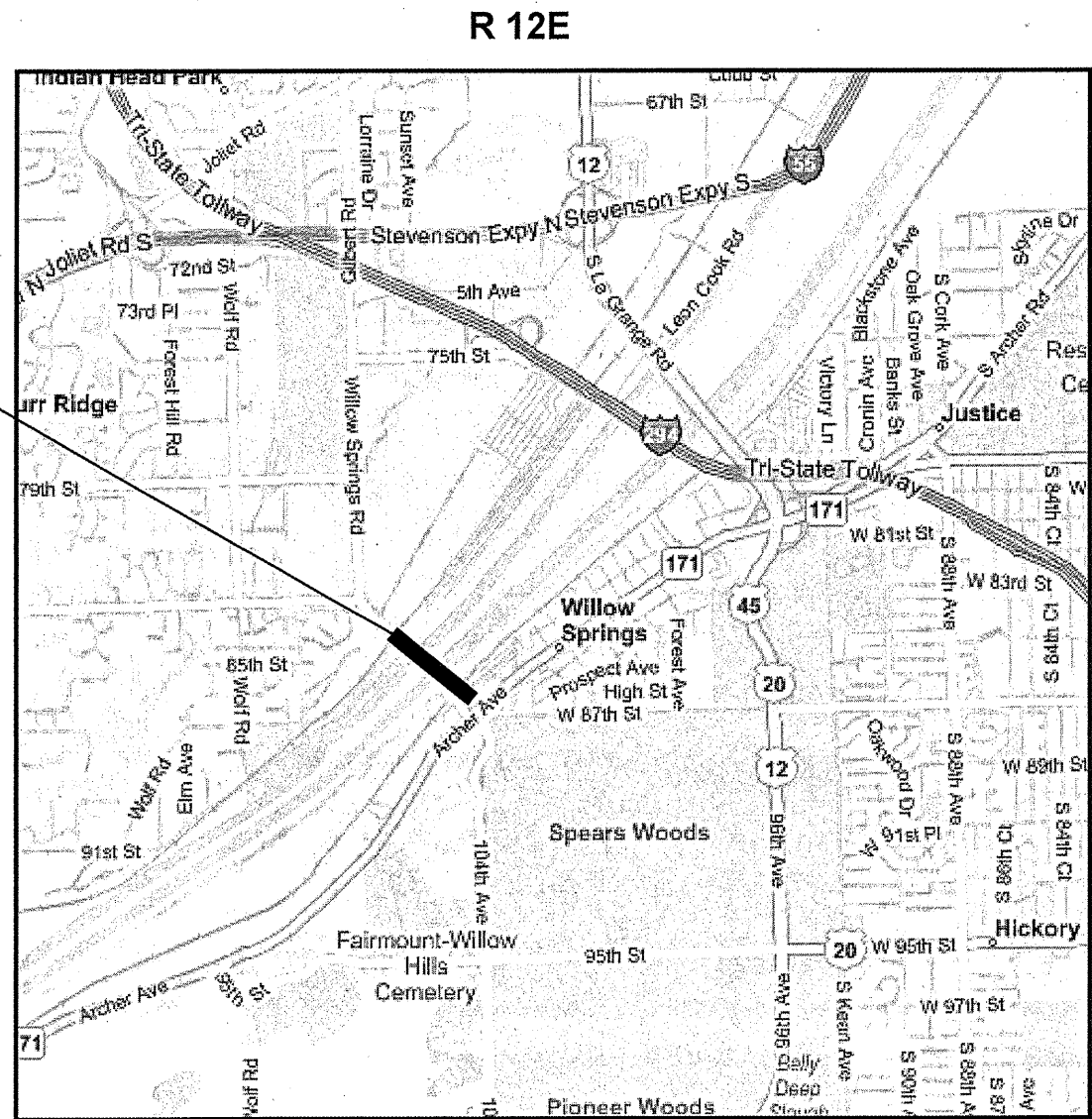
**SUMMARY OF QUANTITIES**

CODE NO	DESCRIPTION	UNITS	URBAN 100% STATE TOTAL	CONSTRUCTION TYPE CODE: SFTY - 0014			
				COOK COUNTY	WILL COUNTY		
				LOC. NO. 1 SN:016-0540	LOC. NO. 2 SN:099-0105		
67000400	ENGINEER'S FIELD OFFICE, TYPE A	CAL MO	3	2	1		
67100100	MOBILIZATION	L SUM	1	0.5	0.5		
70100450	TRAFFIC CONTROL AND PROTECTION, STANDARD 701201	L SUM	1		1		
70102630	TRAFFIC CONTROL AND PROTECTION, STANDARD 701601	L SUM	1	1			
Z0007112	CONTAINMENT AND DISPOSAL OF LEAD PAINT CLEANING RESIDUES	L SUM	1	0.5	0.5		
Z0010501	CLEANING AND PAINTING STEEL BRIDGE NO. 1	L SUM	1	1			
Z0010502	CLEANING AND PAINTING STEEL BRIDGE NO. 2	L SUM	1		1		
Z0030850	TEMPORARY INFORMATION SIGNING	SQ FT	102.8	51.4	51.4		

ROUTE	SECTION	COUNTY	TOTAL SHEETS	SHEET NUMBER
FAU 2697 FAP 607	2010-055 BP	COOK AND WILL	20	5

CONTRACT NO. 60L30

LOCATION 1 (SN 016-0540)  
WILLOW SPRINGS RD.  
OVER S&S AND I&M CANALS,  
RR & DESPLAINES RIVER  
VILLAGE OF WILLOW SPRINGS



**TRAFFIC DATA**

2006 ADT = 17700  
POSTED SPEED LIMIT = 40 MPH

WILLOW SPRINGS TOWNSHIP  
COOK COUNTY

ILLINOIS DEPARTMENT OF TRANSPORTATION  
  
LOCATION MAP  
LOCATION 1: SN-016-0540

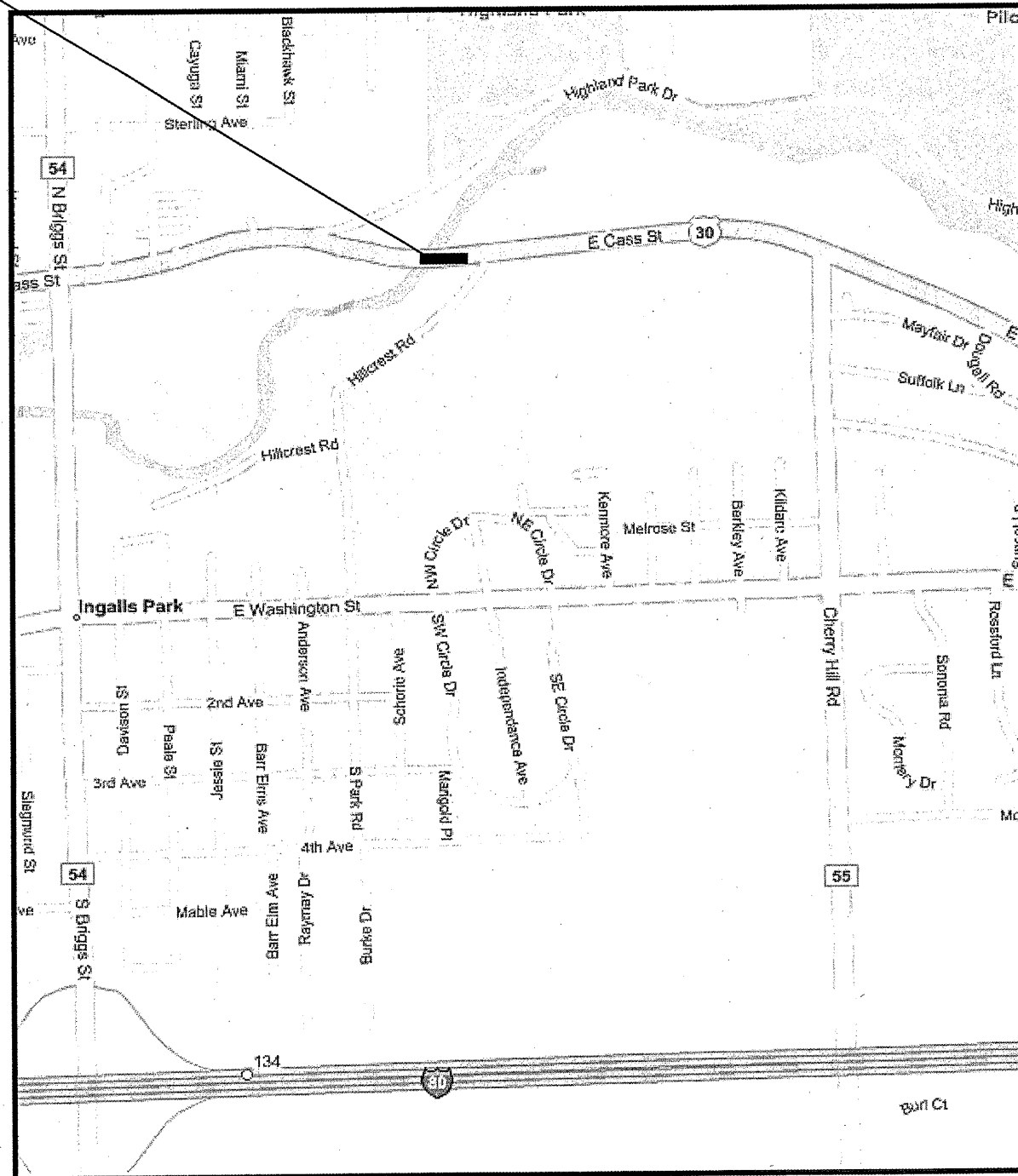
ROUTE	SECTION	COUNTY	TOTAL SHEETS	SHEET NUMBER
FAU 2697 FAP 607	2010-055 BP	COOK AND WILL	20	6

CONTRACT NO. 60L30

LOCATION 2 (SN 099-0105)  
IL 30 (CASS ST.)  
OVER HICKORY CREEK  
JOLIET TOWNSHIP

R 10E

T 35N



**TRAFFIC DATA**

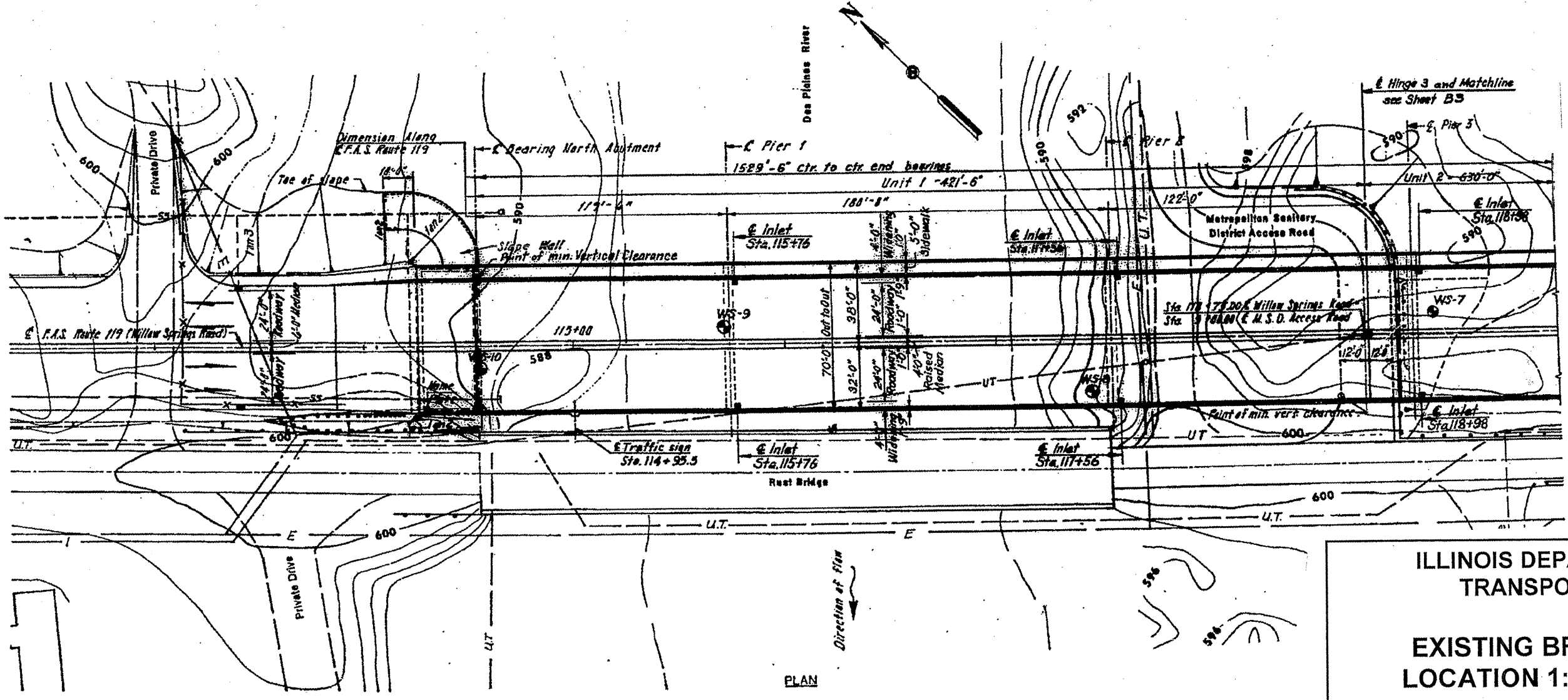
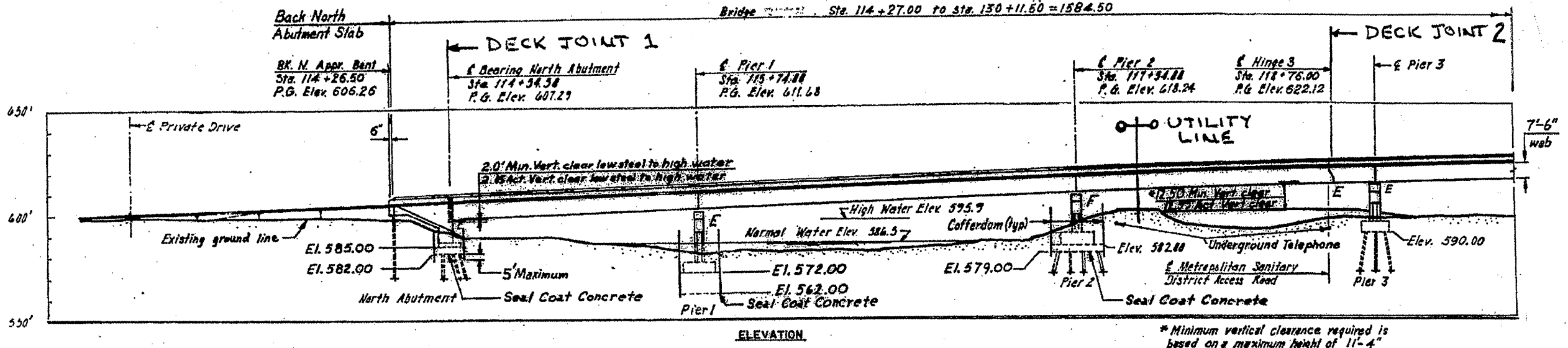
ADT = 7200  
POSTED SPEED LIMIT = 40 - 50 MPH

JOLIET TOWNSHIP  
WILL COUNTY

ILLINOIS DEPARTMENT OF TRANSPORTATION  
LOCATION MAP  
LOCATION 2: SN 099-0105

ROUTE	SECTION	COUNTY	TOTAL SHEETS	SHEET NUMBER
VARIOUS	2010-055 BP	COOK AND WILL	20	7

CONTRACT NO. 60L30



**FOR INFORMATION ONLY**

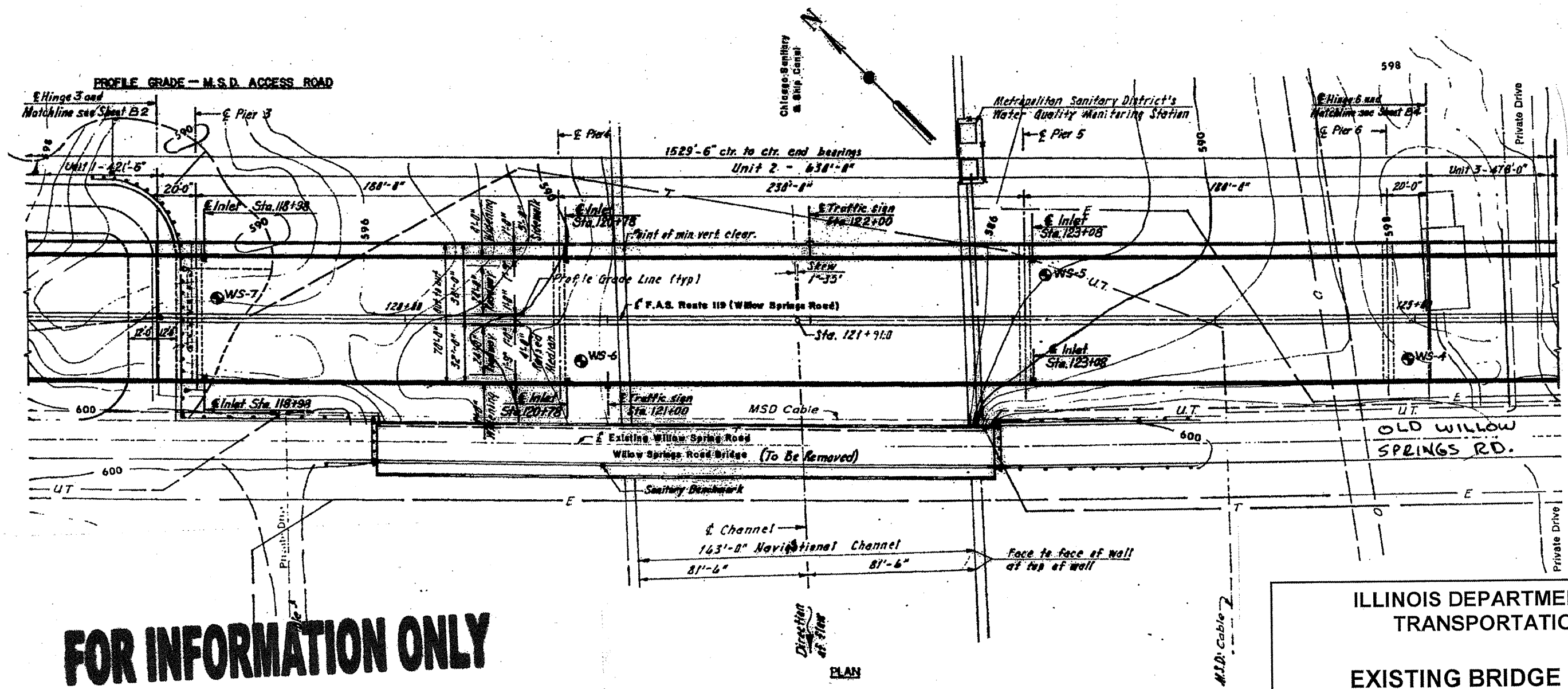
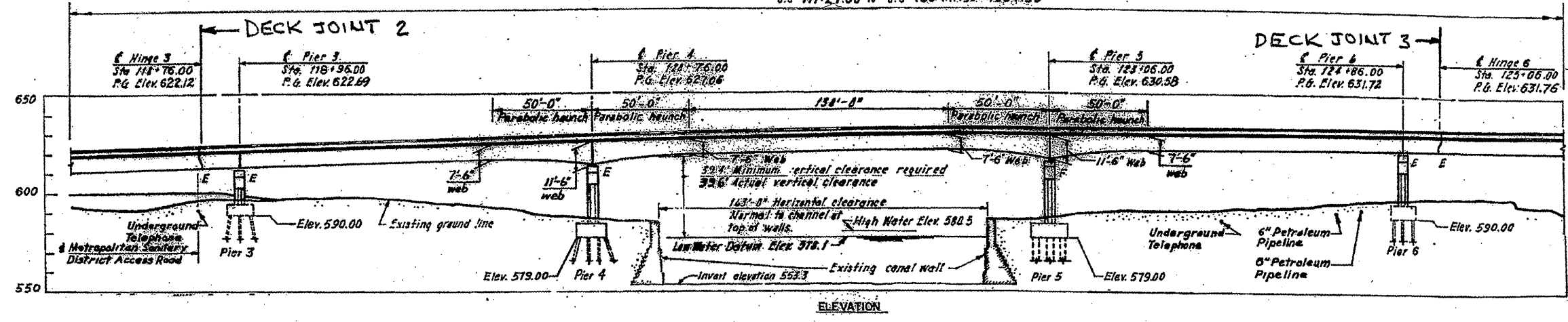
ILLINOIS DEPARTMENT OF  
TRANSPORTATION  
  
EXISTING BRIDGE PLAN  
LOCATION 1: SN 016-0540



ROUTE VARIOUS	SECTION 2010-055 BP	COUNTY COOK AND WILL	TOTAL SHEETS 20	SHEET NUMBER 8
------------------	------------------------	-------------------------	--------------------	-------------------

Sta 114+27.00 to Sta 130+11.50=1584.50

CONTRACT NO. 60L30



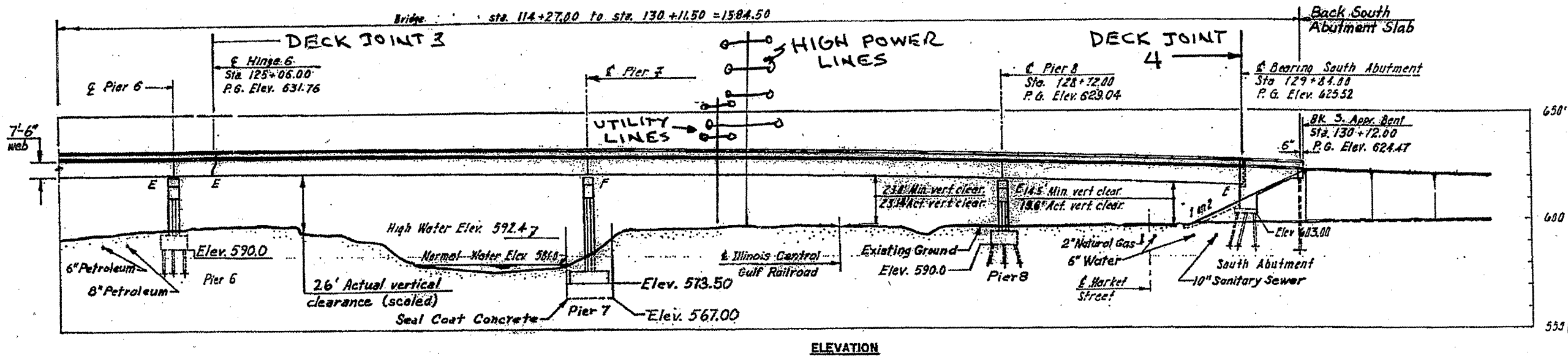
**FOR INFORMATION ONLY**

ILLINOIS DEPARTMENT OF TRANSPORTATION  
EXISTING BRIDGE PLAN  
LOCATION 1: SN 016-0540

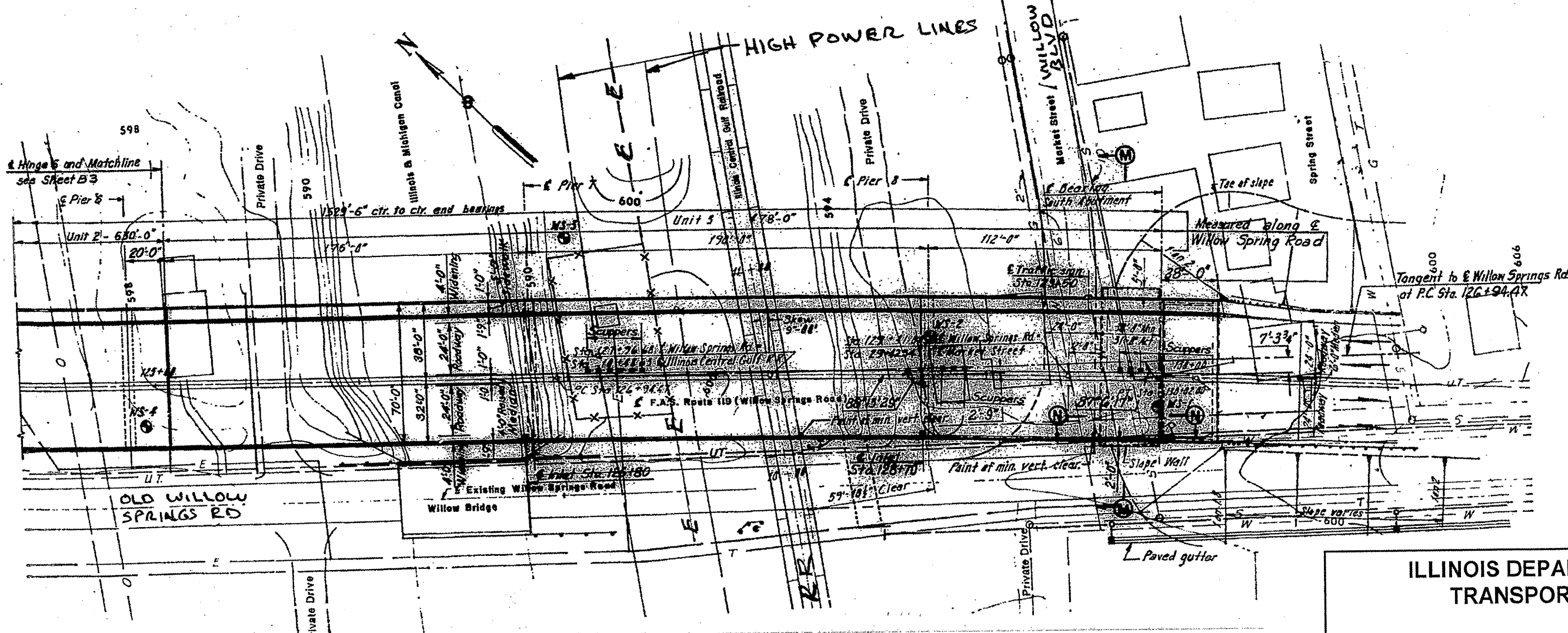


ROUTE VARIOUS	SECTION 2010-055 BP	COUNTY COOK AND WILL	TOTAL SHEETS 20	SHEET NUMBER 9
------------------	------------------------	-------------------------	--------------------	-------------------

CONTRACT NO. 60L30



ELEVATION

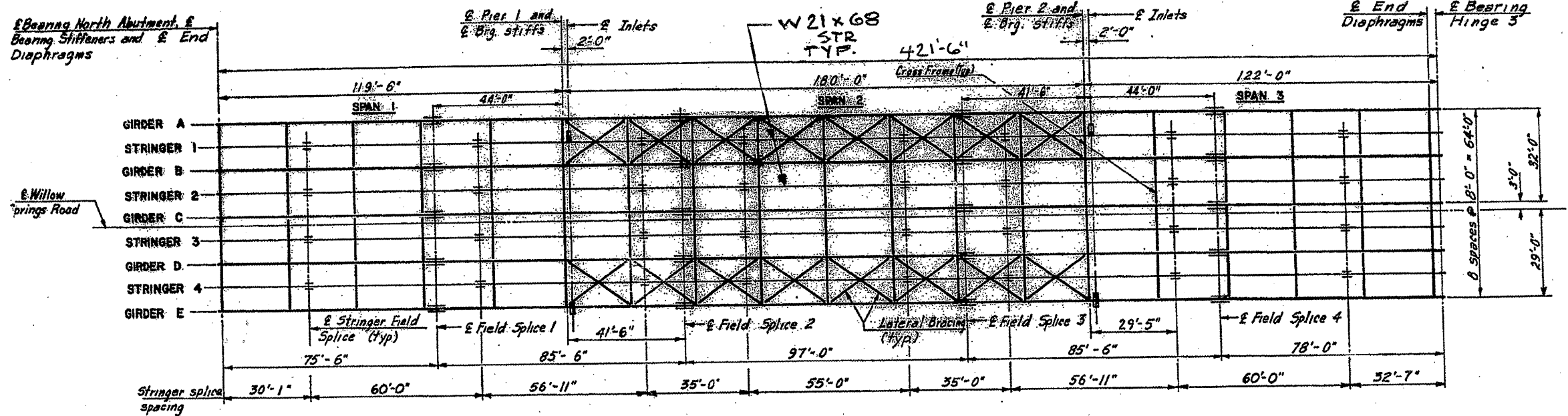


**FOR INFORMATION ONLY**

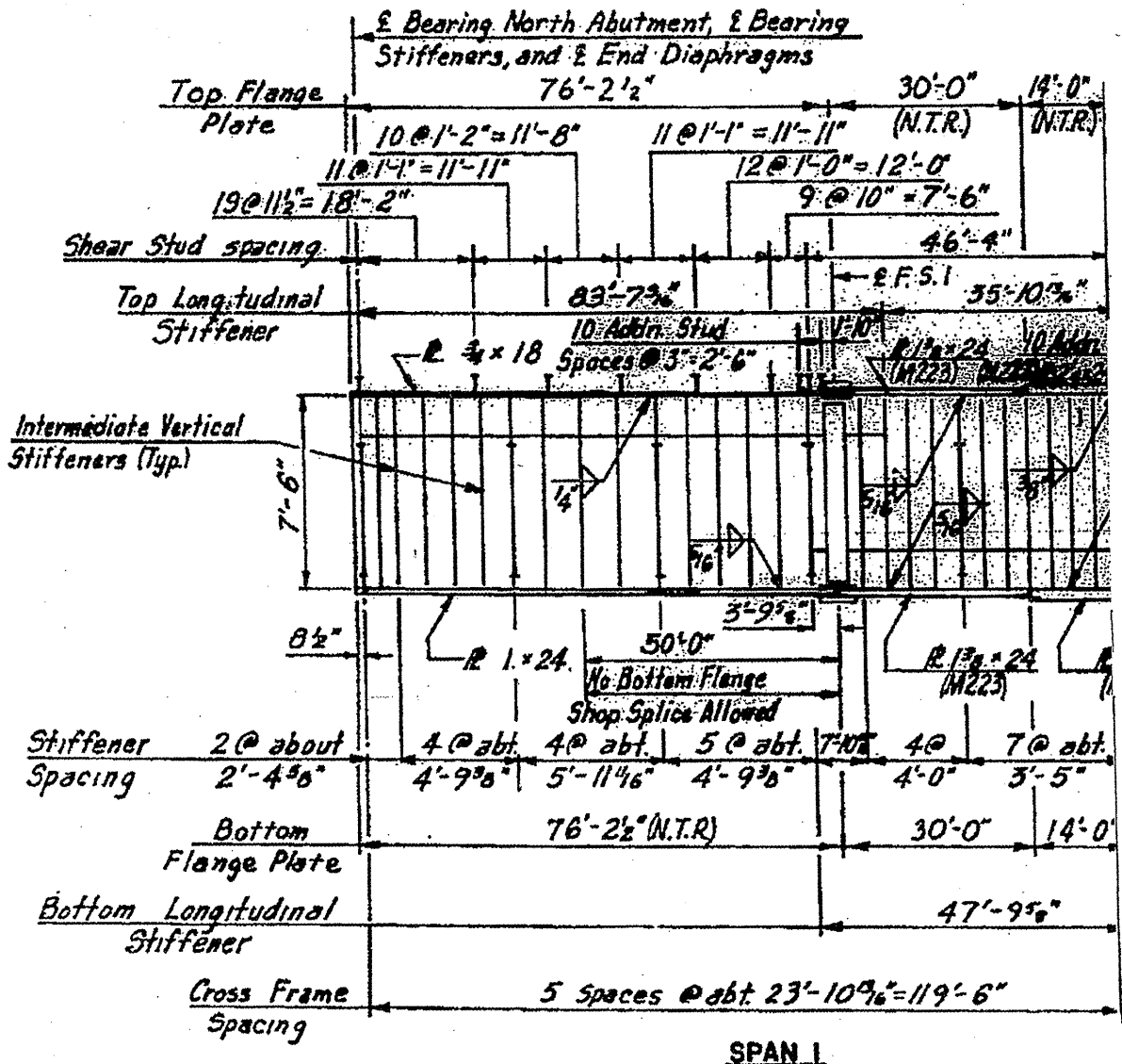
ILLINOIS DEPARTMENT OF  
TRANSPORTATION  
  
EXISTING BRIDGE PLAN  
LOCATION 1: SN 016-0540

ROUTE	SECTION	COUNTY	TOTAL SHEETS	SHEET NUMBER
VARIOUS	2010-055 BP	COOK AND WILL	20	10

CONTRACT NO. 60L30



FRAMING PLAN

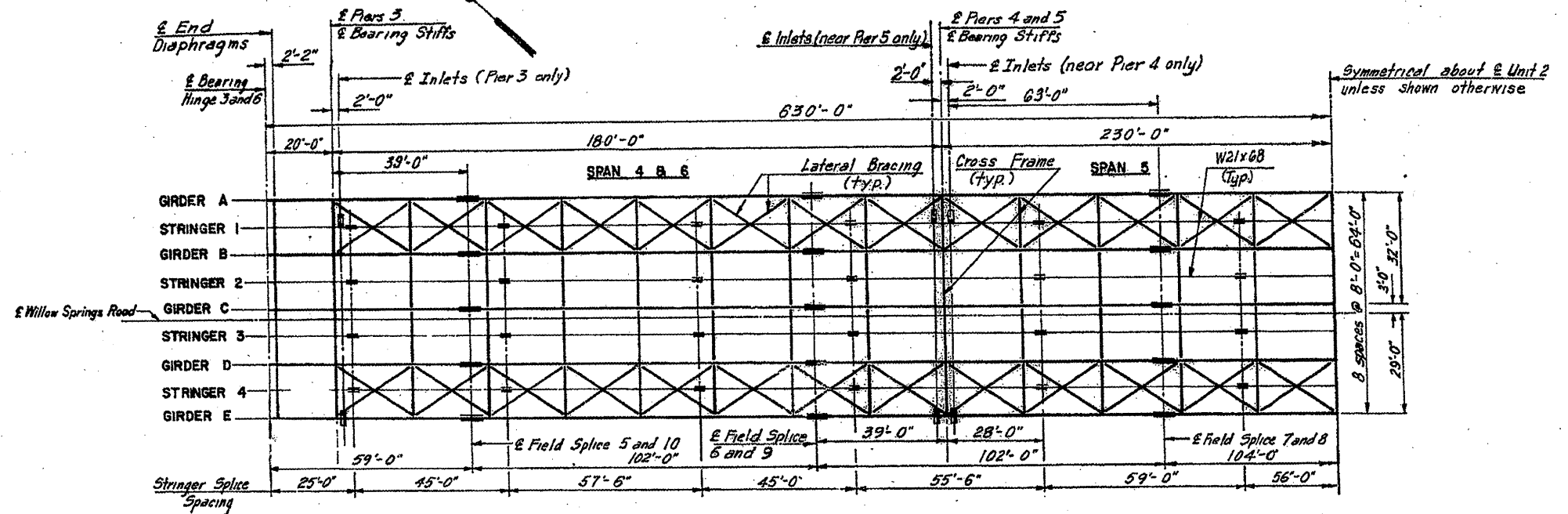
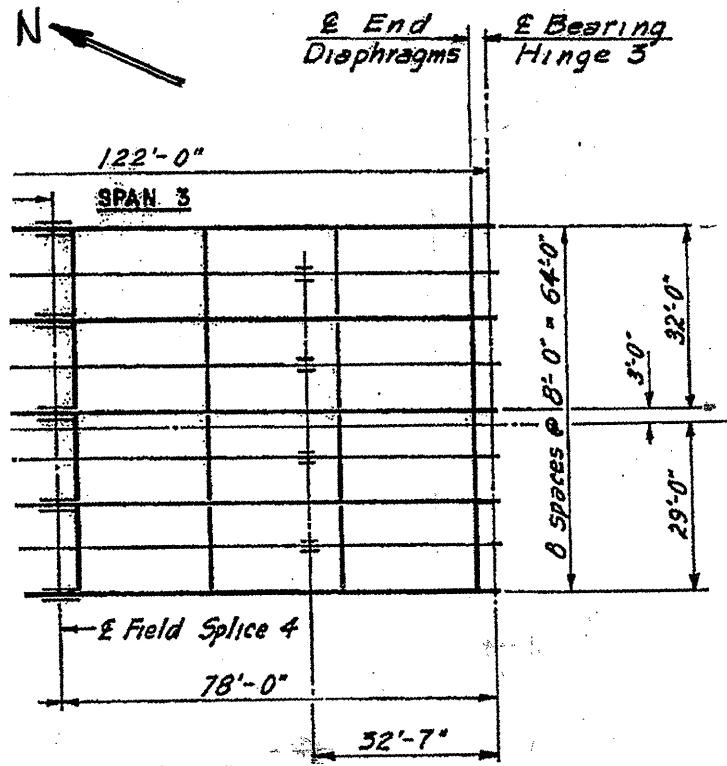


ILLINOIS DEPARTMENT OF  
TRANSPORTATION

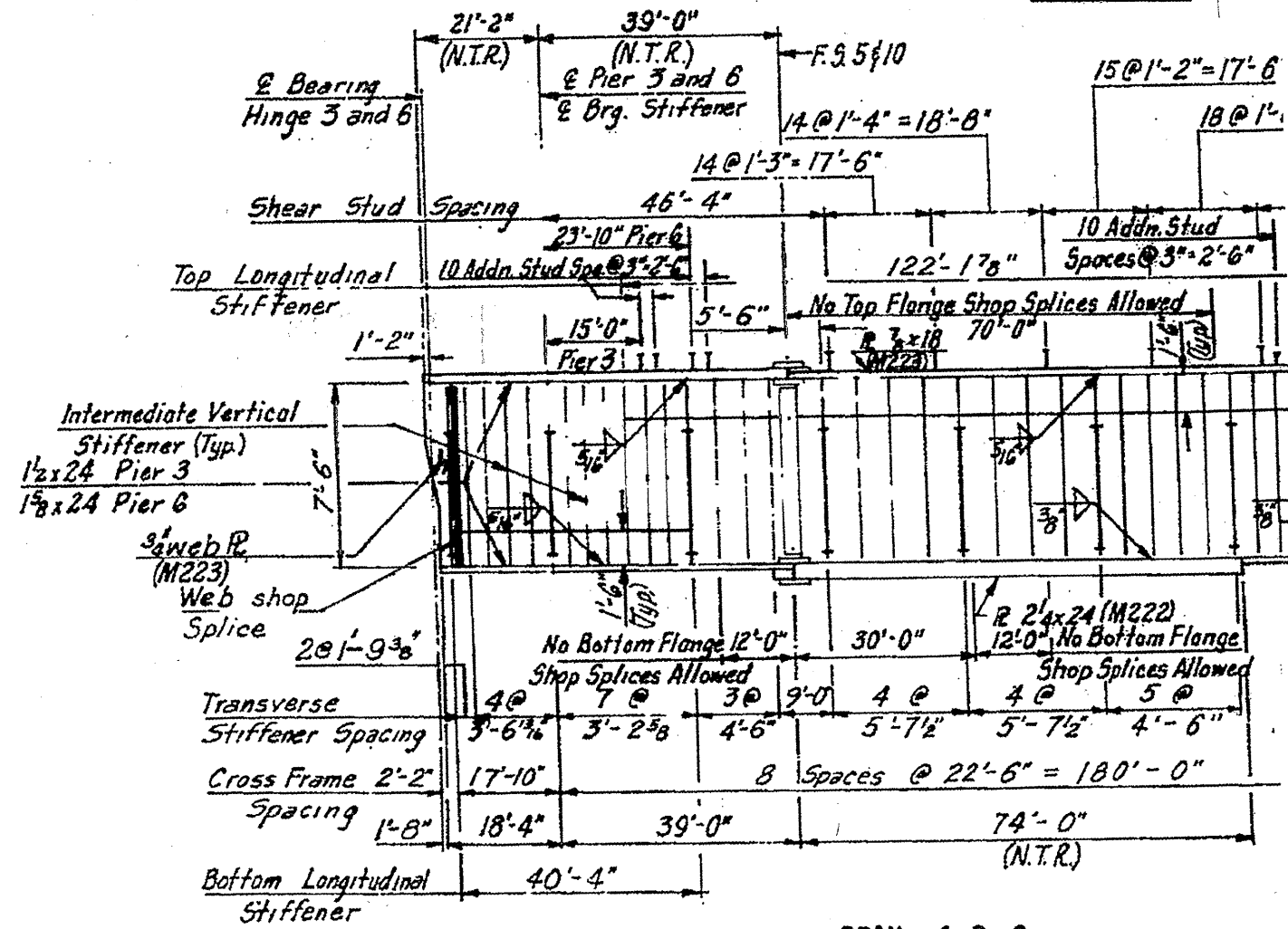
EXISTING BRIDGE PLAN  
LOCATION 1: SN 016-0540

ROUTE VARIOUS	SECTION 2010-055 BP	COUNTY COOK AND WILL	TOTAL SHEETS 20	SHEET NUMBER 11
------------------	------------------------	-------------------------	-----------------------	-----------------------

CONTRACT NO. 60L30



FRAMING PLAN

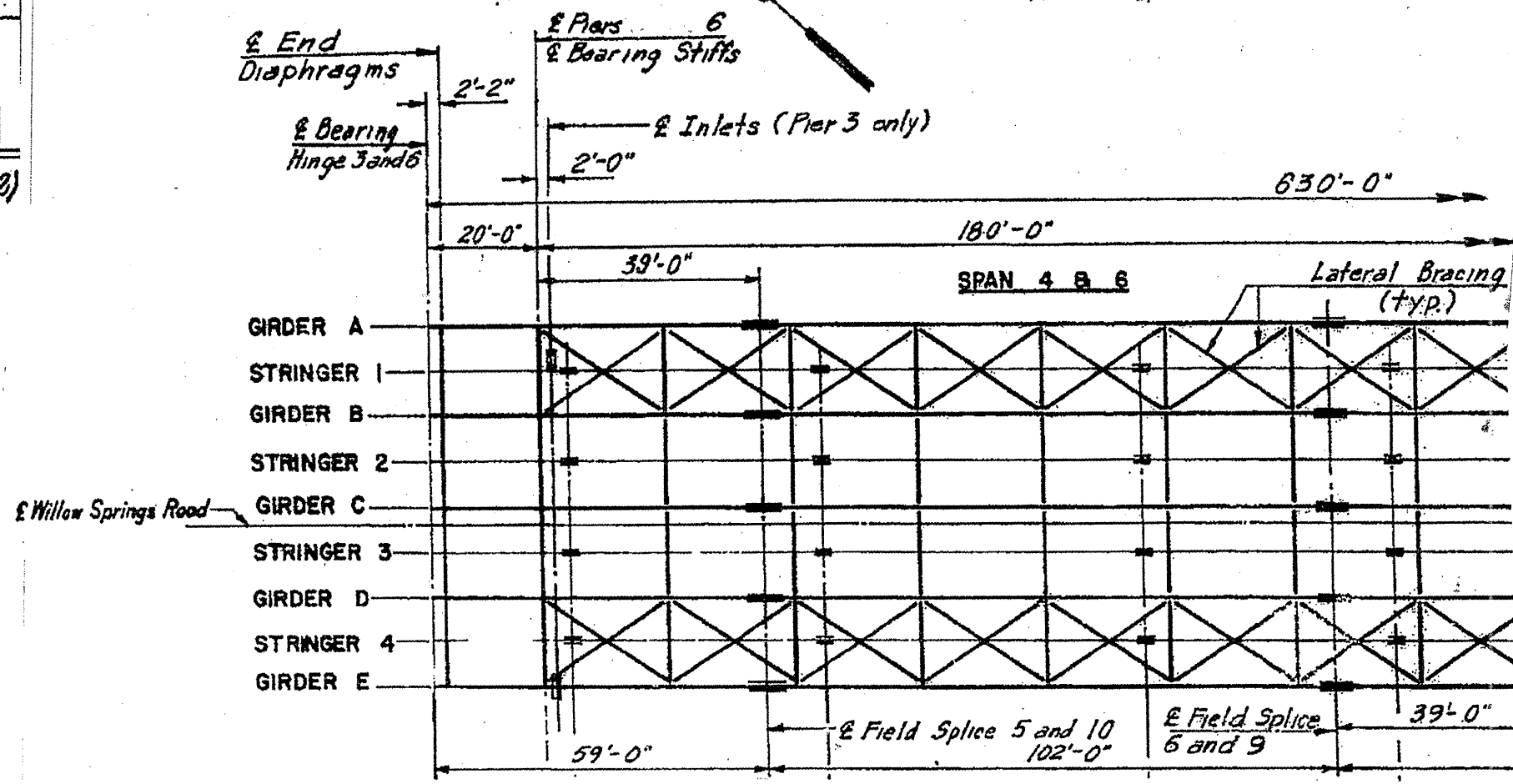
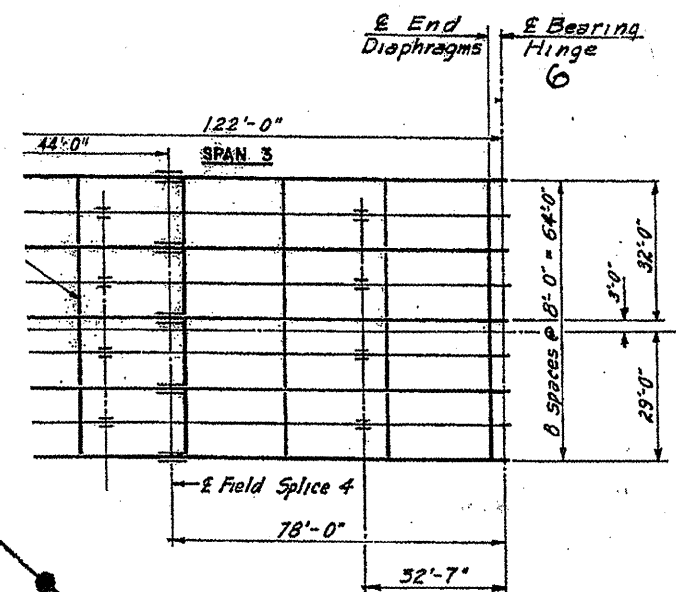
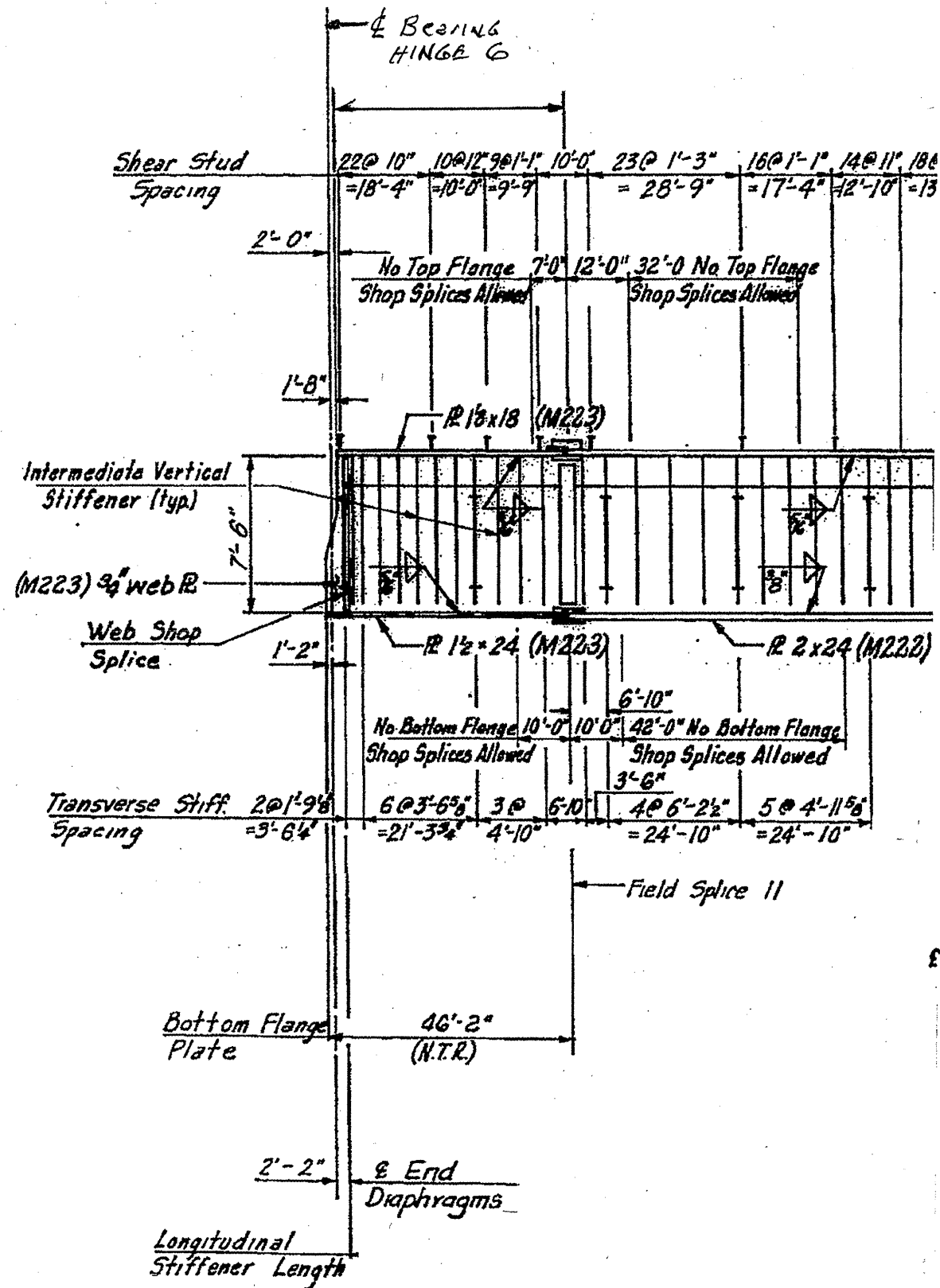


SPAN 4 & 6

ILLINOIS DEPARTMENT OF  
TRANSPORTATION  
  
EXISTING BRIDGE PLAN  
LOCATION 1: SN 016-0540

ROUTE VARIOUS	SECTION 2010-055 BP	COUNTY COOK AND WILL	TOTAL SHEETS 20	SHEET NUMBER 12
------------------	------------------------	-------------------------	-----------------------	-----------------------

CONTRACT NO. 60L30

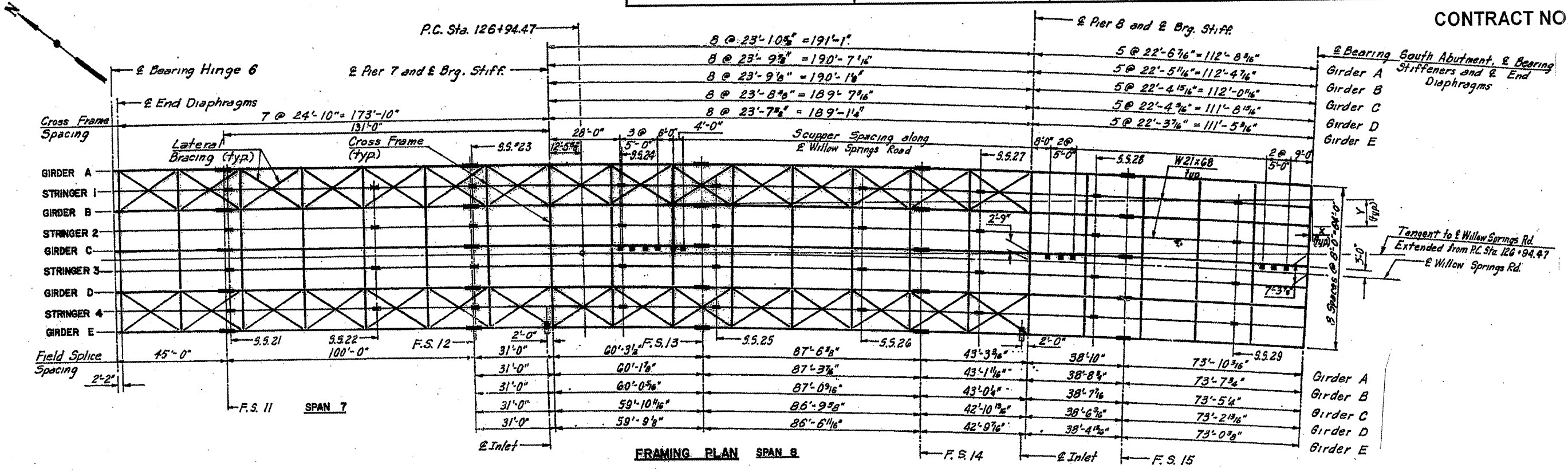


ILLINOIS DEPARTMENT OF  
TRANSPORTATION

EXISTING BRIDGE PLAN  
LOCATION 1: SN 016-0540

ROUTE VARIOUS	SECTION 2010-055 BP	COUNTY COOK AND WILL	TOTAL SHEETS 20	SHEET NUMBER 13
------------------	------------------------	-------------------------	--------------------	--------------------

CONTRACT NO. 60L30



Span	Span 8	Span 9	Span 8	Span 9	Span 8	Span 9	Span 8	Span 9	Span 8	Span 9	Span 8	Span 9
Girder A	43'-0 3/16"	150' 11"	70' 1"	120' 1 3/4"	130' 1 1/4"	210' 1 1/4"	15' 0"	14' 1 1/4"	19' 2 3/8"	20' 2 3/16"	15' 0"	14' 1 1/4"
Girder B	42'-8 7/16"	150' 11"	70' 1"	120' 1 3/4"	130' 1 1/4"	210' 1 1/4"	15' 0"	14' 1 1/4"	19' 2 3/8"	20' 2 2 5/8"	15' 0"	14' 1 1/4"
Girder C	42'-4 1/16"	150' 11"	70' 1"	120' 1 3/4"	130' 1 1/4"	210' 1 1/4"	15' 0"	14' 1 1/4"	19' 2 3/8"	20' 2 2 7/8"	15' 0"	14' 1 1/4"
Girder D	42'-0 1/16"	150' 11"	70' 1"	120' 1 3/4"	130' 1 1/4"	210' 1 1/4"	15' 0"	14' 1 1/4"	19' 2 3/8"	20' 2 2 1/16"	15' 0"	14' 1 1/4"
Girder E	41'-9 3/16"	150' 11"	70' 1"	120' 1 3/4"	130' 1 1/4"	210' 1 1/4"	15' 0"	14' 1 1/4"	19' 2 3/8"	20' 2 2 3/8"	15' 0"	14' 1 1/4"

Shop Splices Allowed: R 14 x 24 (M223), R 2 x 24 (M223), R 1 1/2 x 24 (M223), R 1 x 24 (M223)

Shop Splices Allowed: 10 Addn. Stud Splices @ 3' 2 1/2"

3/8" Web R (Typ.) unless shown otherwise

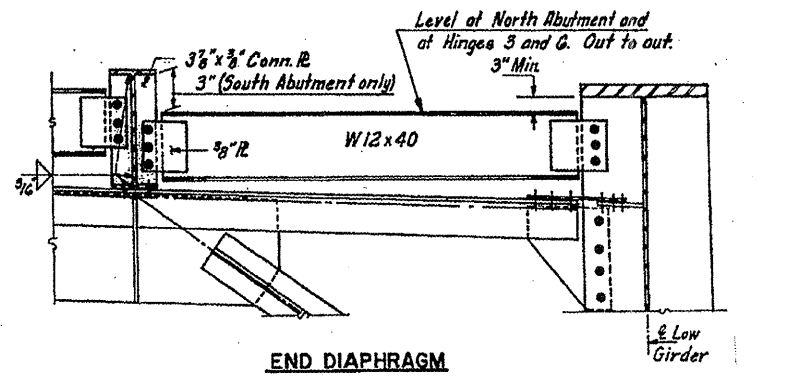
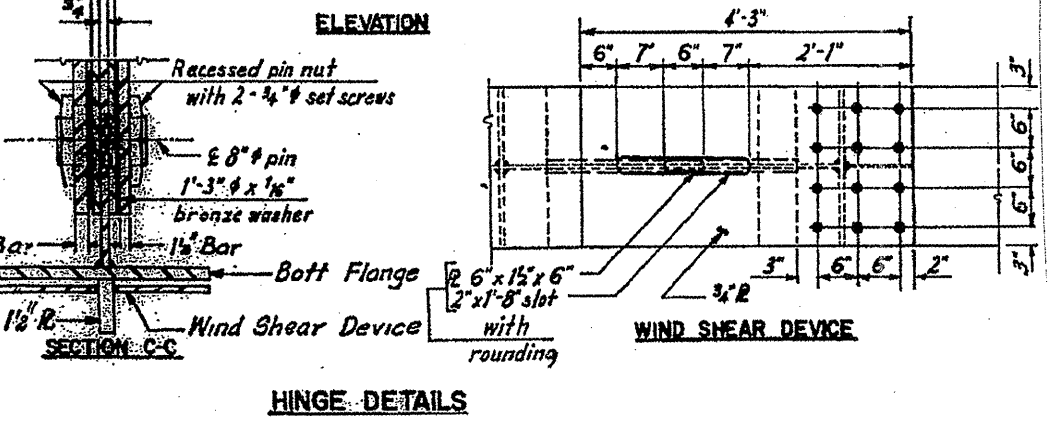
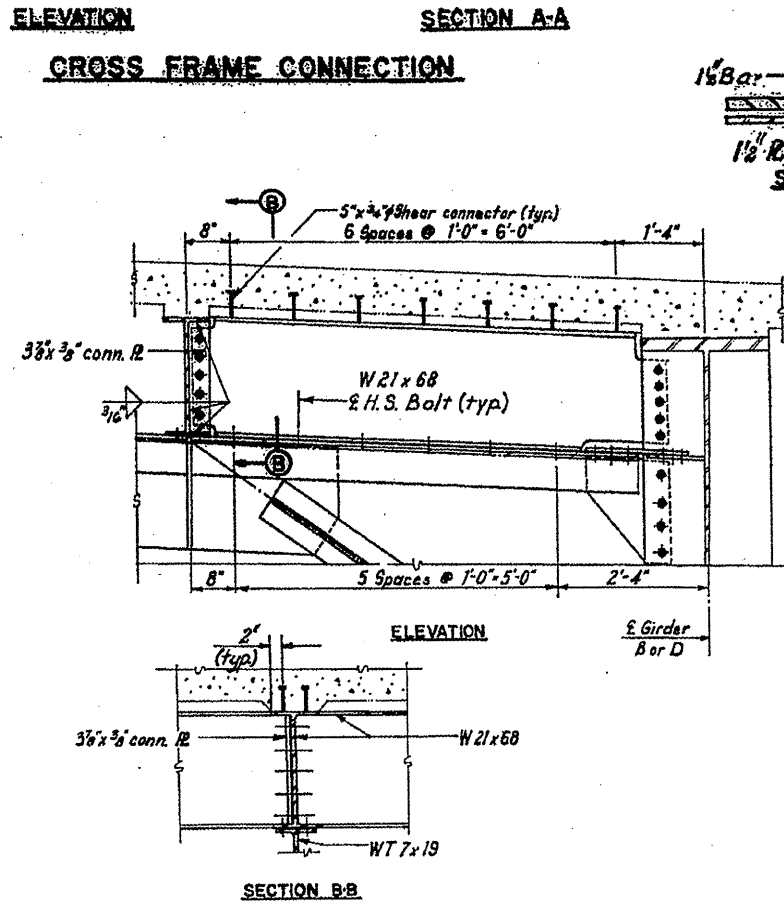
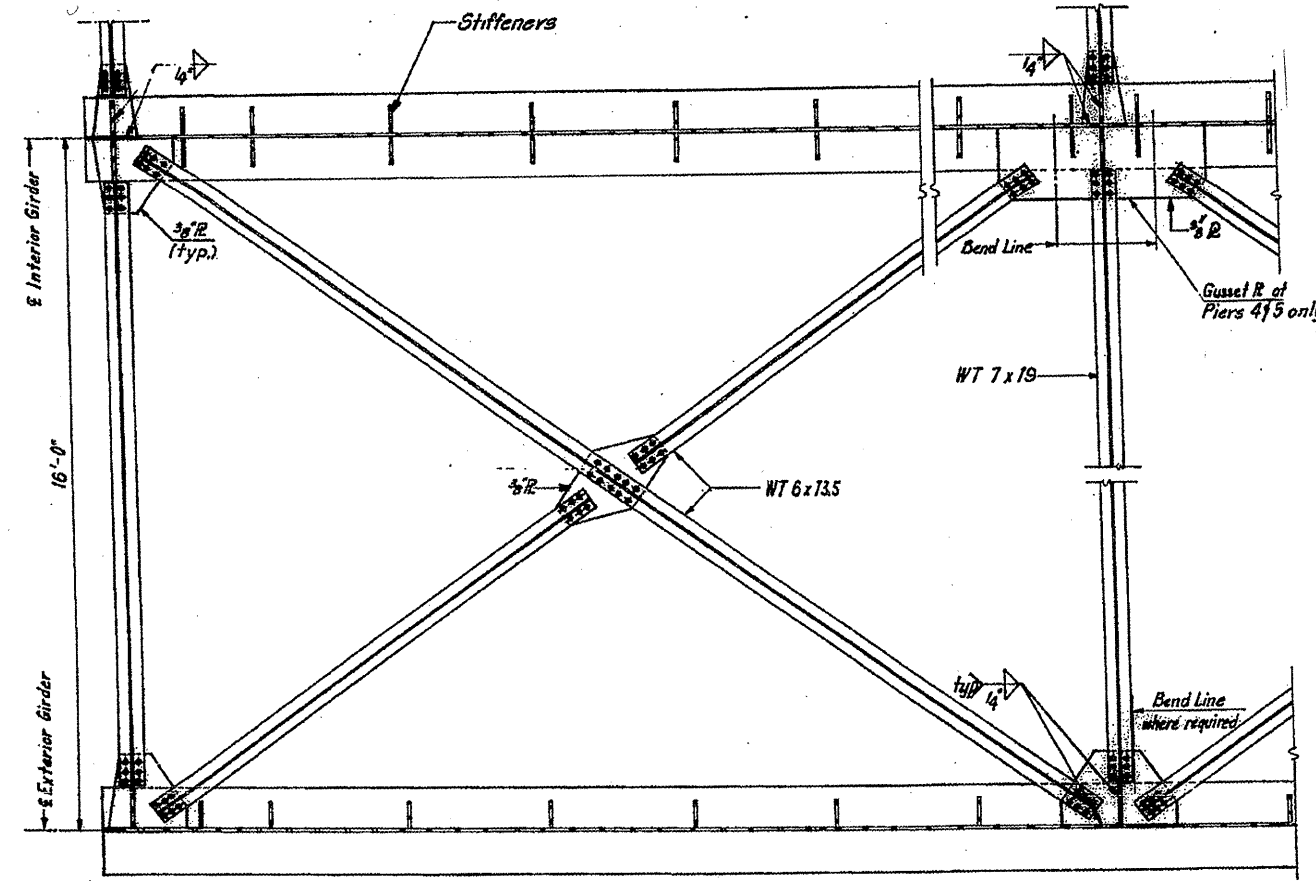
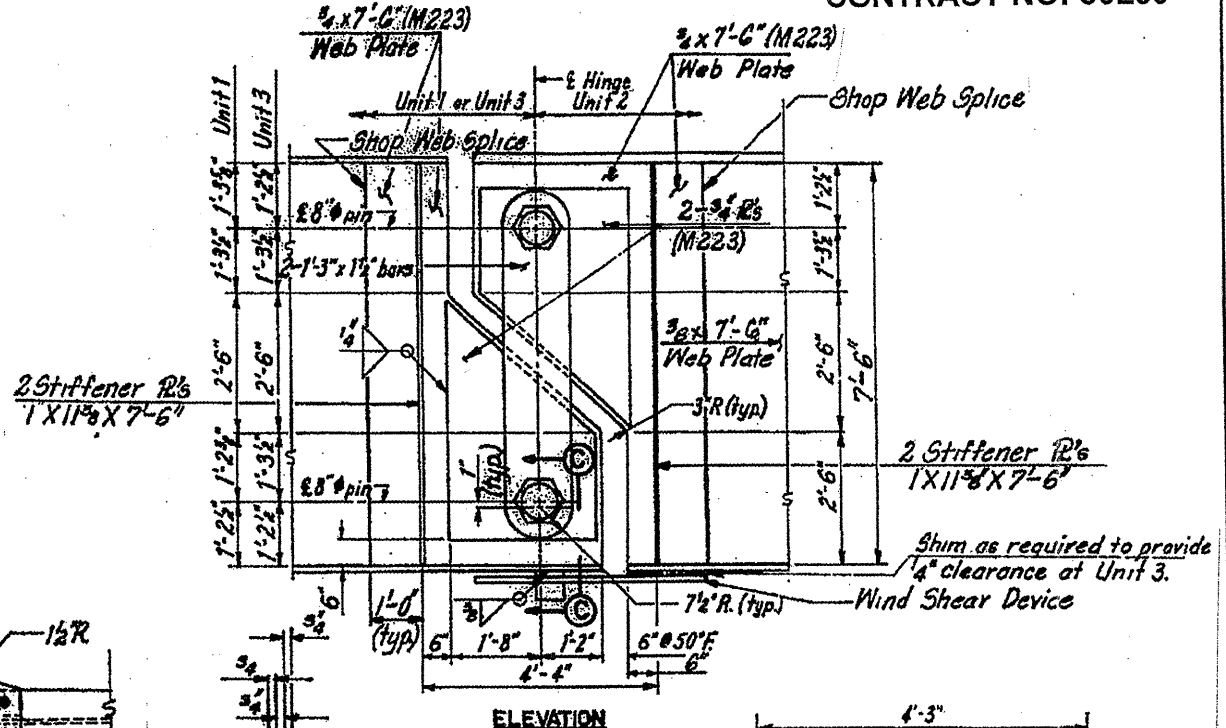
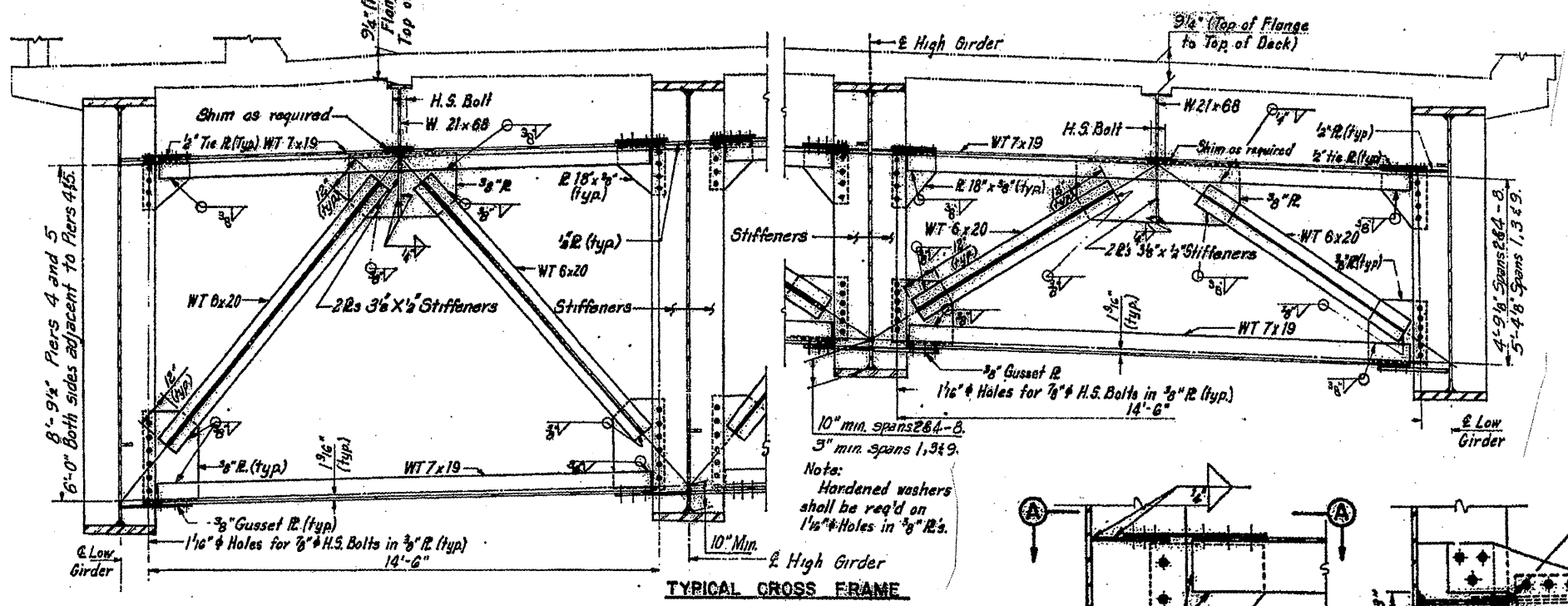
ILLINOIS DEPARTMENT OF  
TRANSPORTATION

EXISTING BRIDGE PLAN  
LOCATION 1: SN 016-0540



ROUTE VARIOUS	SECTION 2010-055 BP	COUNTY COOK AND WILL	TOTAL SHEETS 20	SHEET NUMBER 14
------------------	------------------------	-------------------------	-----------------------	-----------------------

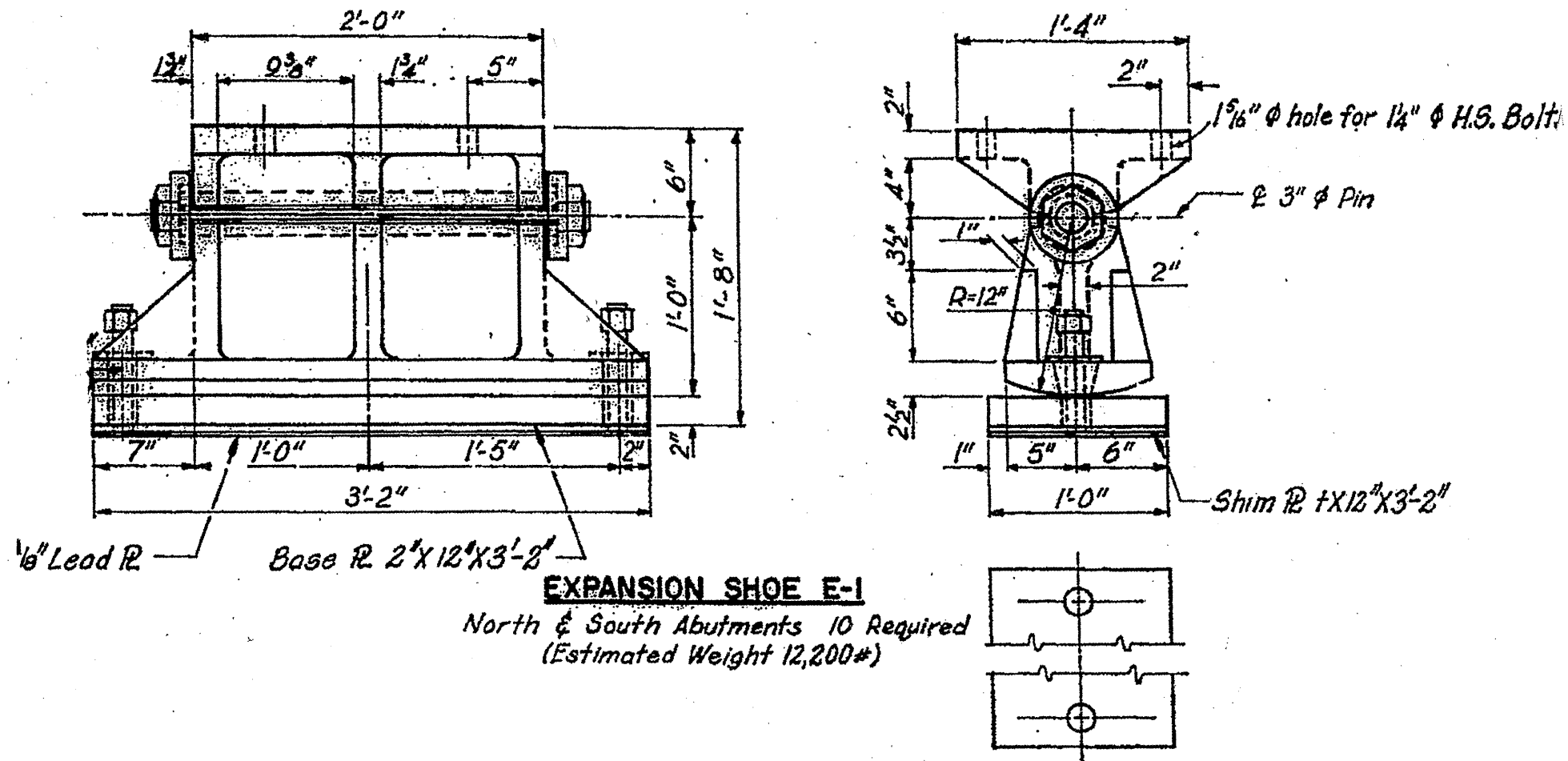
CONTRACT NO. 60L30



ILLINOIS DEPARTMENT OF  
TRANSPORTATION  
  
EXISTING BRIDGE PLAN  
LOCATION 1: SN 016-0540

ROUTE	SECTION	COUNTY	TOTAL SHEETS	SHEET NUMBER
VARIOUS	2010-055 BP	COOK AND WILL	20	15

CONTRACT NO. 60L30



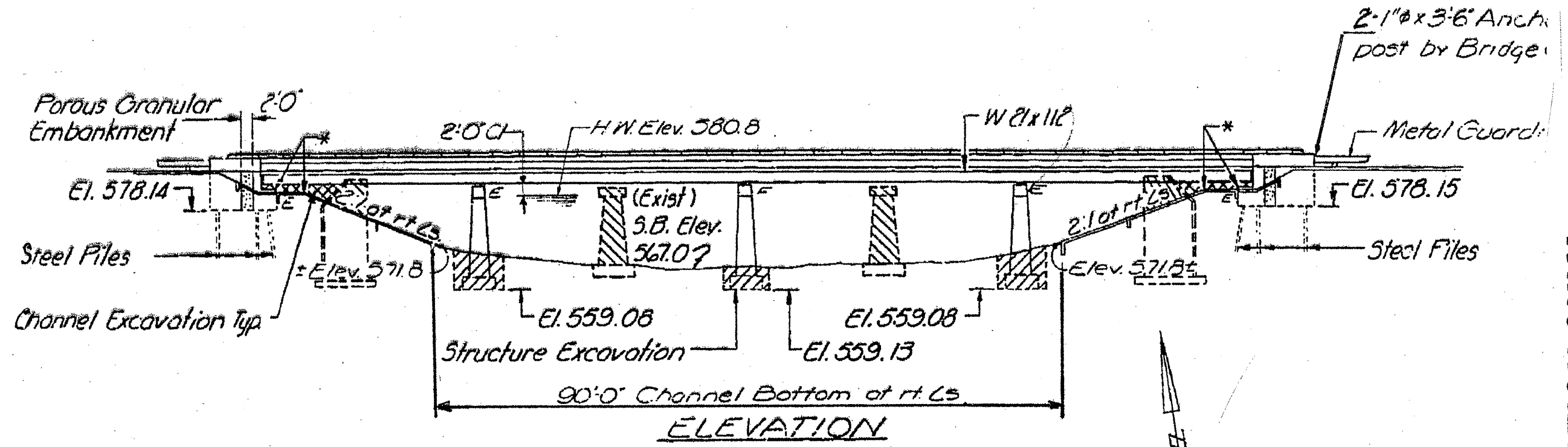
ILLINOIS DEPARTMENT OF  
 TRANSPORTATION

EXISTING BRIDGE PLAN  
 LOCATION 1: SN 016-0540

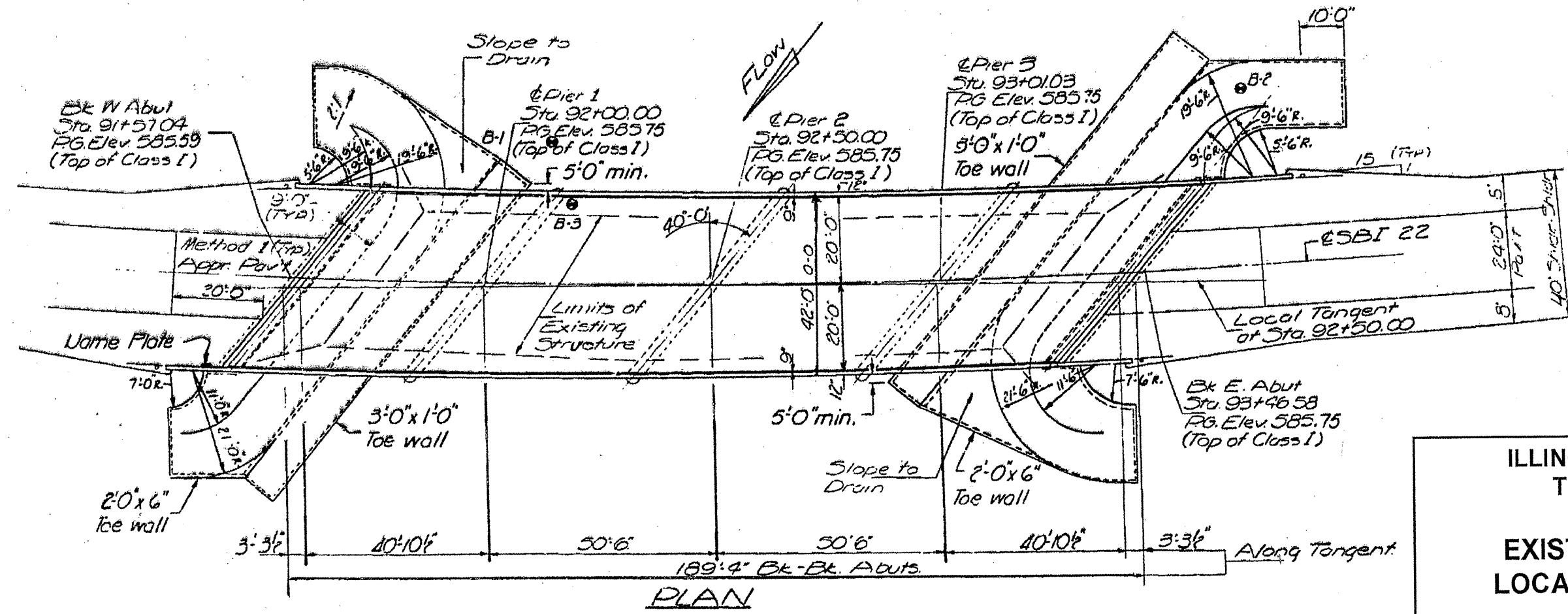


ROUTE	SECTION	COUNTY	TOTAL SHEETS	SHEET NUMBER
VARIOUS	2010-055 BP	COOK AND WILL	20	16

CONTRACT NO. 60L30



**FOR INFORMATION ONLY**

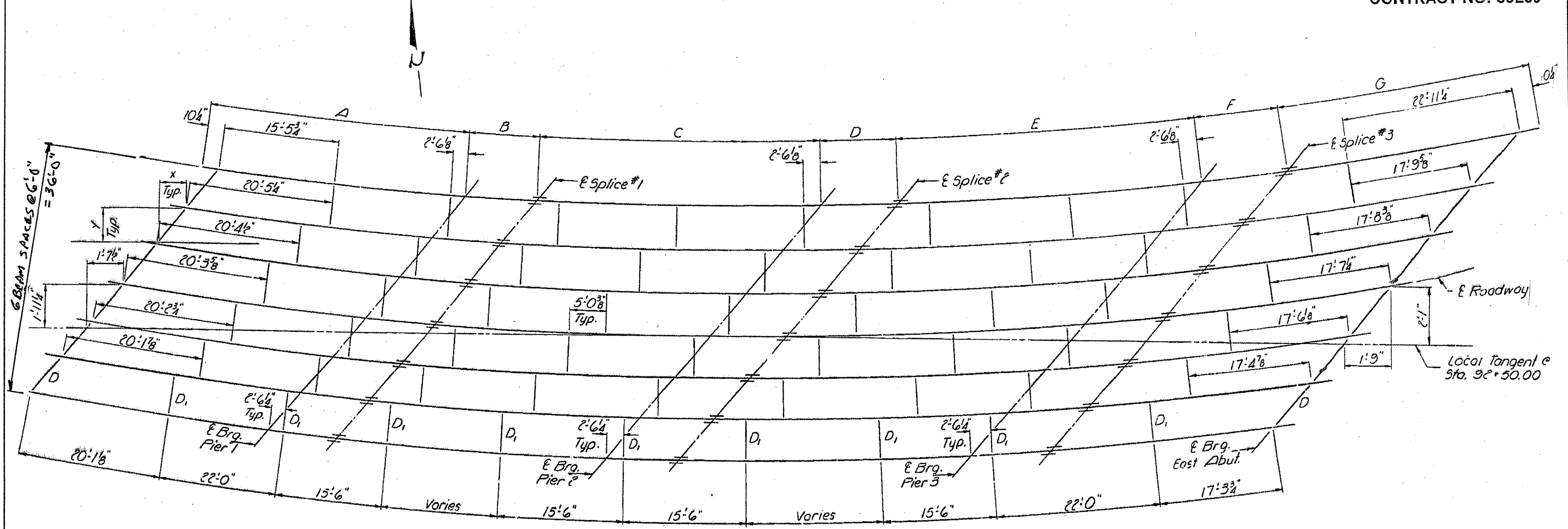


ILLINOIS DEPARTMENT OF  
TRANSPORTATION

EXISTING BRIDGE PLAN  
LOCATION 2: SN 099-0105

ROUTE	SECTION	COUNTY	TOTAL SHEETS	SHEET NUMBER
VARIOUS	2010-055 BP	COOK AND WILL	20	17

CONTRACT NO. 60L30



**FRAMING PLAN**  
All Beams W21x112

**BEAM DIMENSIONS**

Beam	A	B	C	D	E	F	G
1	40'-10 1/8"	10'-7 1/2"	39'-8 1/8"	10'-10 1/8"	40'-6 1/4"	10'-9 7/8"	32'-5 1/2"
2	40'-9 1/4"	10'-7 1/4"	39'-7 1/8"	10'-9 7/8"	40'-5 1/8"	10'-9 3/8"	32'-4 1/2"
3	40'-8 1/2"	10'-7"	39'-6 1/4"	10'-9 1/2"	40'-4 1/8"	10'-9 1/4"	32'-3 3/8"
4	40'-7 3/8"	10'-6 3/4"	39'-5 1/4"	10'-9 1/4"	40'-3 1/8"	10'-9"	32'-2 3/4"
5	40'-6 3/4"	10'-6 1/2"	39'-4 3/8"	10'-9"	40'-2"	10'-8 3/4"	32'-1 7/8"
6	40'-5 1/8"	10'-6 1/4"	39'-3 1/2"	10'-8 3/4"	40'-1"	10'-8 1/2"	32'-1"
7	40'-5 1/8"	10'-6"	39'-2 3/8"	10'-8 1/2"	40'-0"	10'-8 1/8"	32'-0 1/8"

**TOTAL BEAM LENGTH**

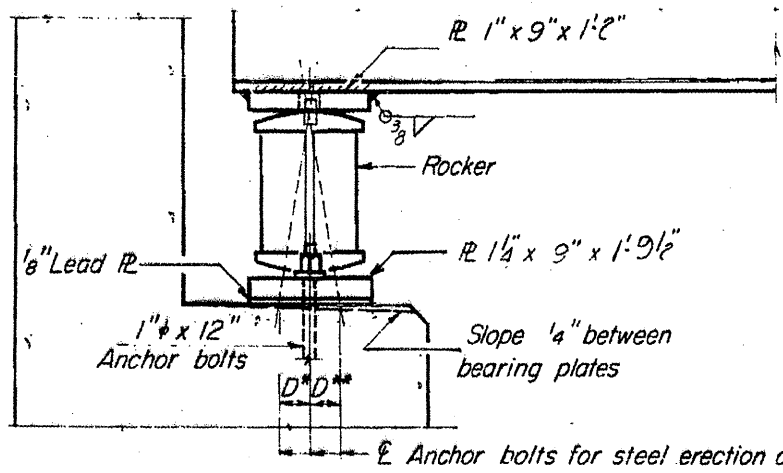
Beam	1	2	3	4	5	6	7
	185'-9 1/2"	185'-4 3/4"	185'-0 1/4"	184'-7 1/2"	184'-3 1/4"	183'-10 1/8"	183'-6 1/2"

ILLINOIS DEPARTMENT OF  
TRANSPORTATION

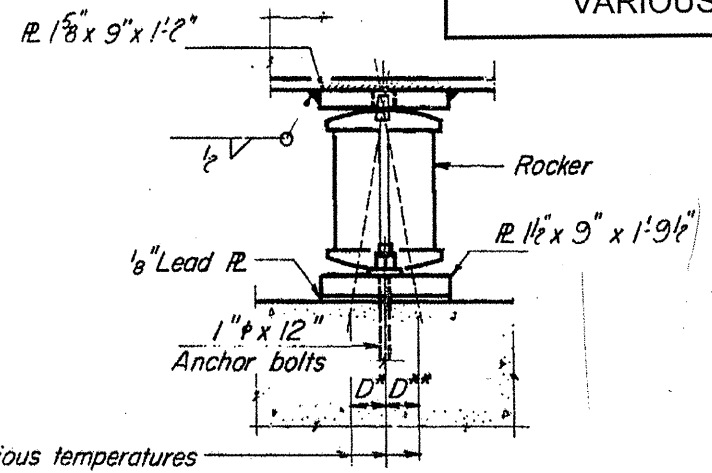
EXISTING BRIDGE PLAN  
LOCATION 2: SN 099-0105

ROUTE VARIOUS	SECTION 2010-055 BP	COUNTY COOK AND WILL	TOTAL SHEETS 20	SHEET NUMBER 18
------------------	------------------------	-------------------------	-----------------------	-----------------------

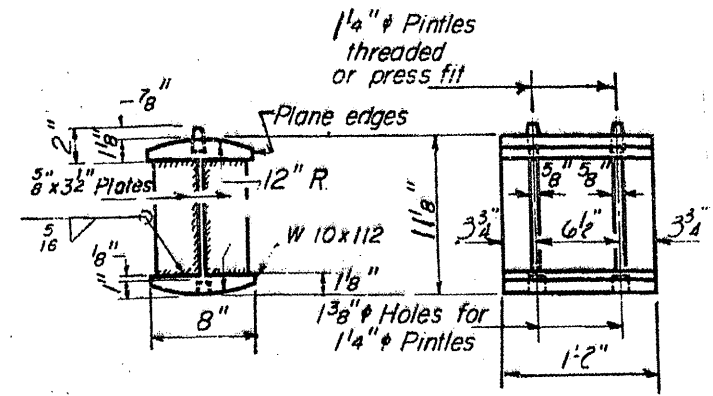
CONTRACT NO. 60L30



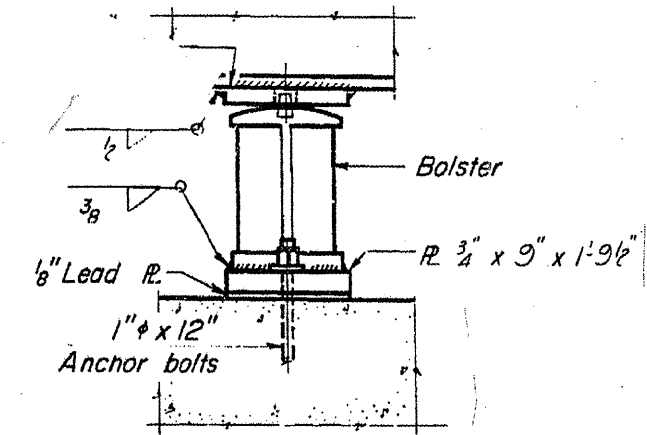
**ELEVATION**



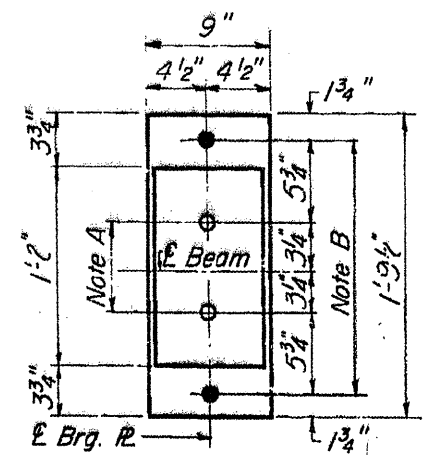
**ELEVATION**



**ROCKER**

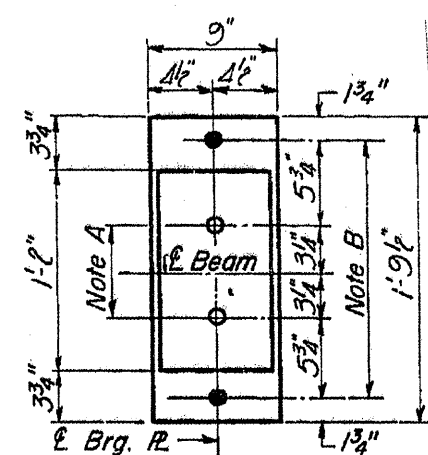


**ELEVATION**



**PLAN**

**AT ABUTMENT**

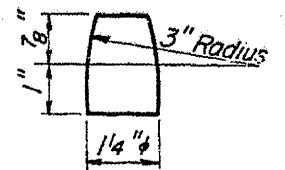


**PLAN**

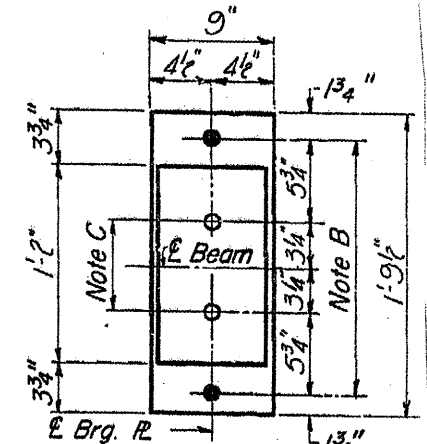
**AT PIERS 1 & 3**

**NOTE B**  
1 1/2" Holes for 1" anchor bolts.  
16 x 2 1/2 x 2 1/2 R. Washers  
under nut.

**BEARING ASSEMBLY DETAILS**

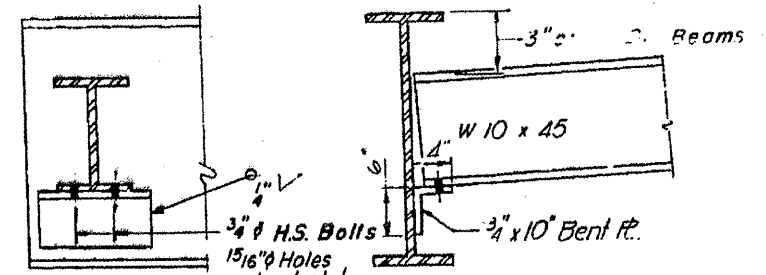


**PINTLE**



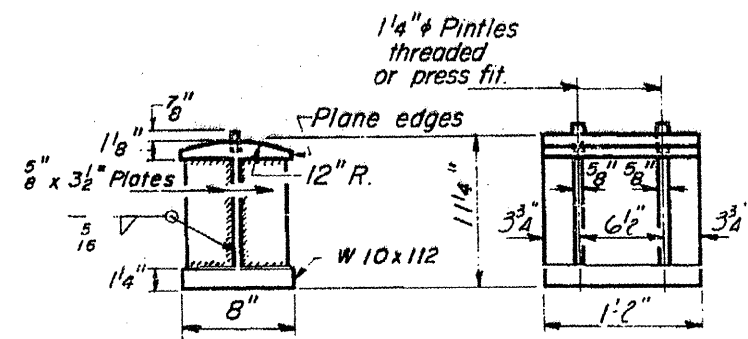
**PLAN**

**AT PIER 2**



**DIAPHRAGM D**

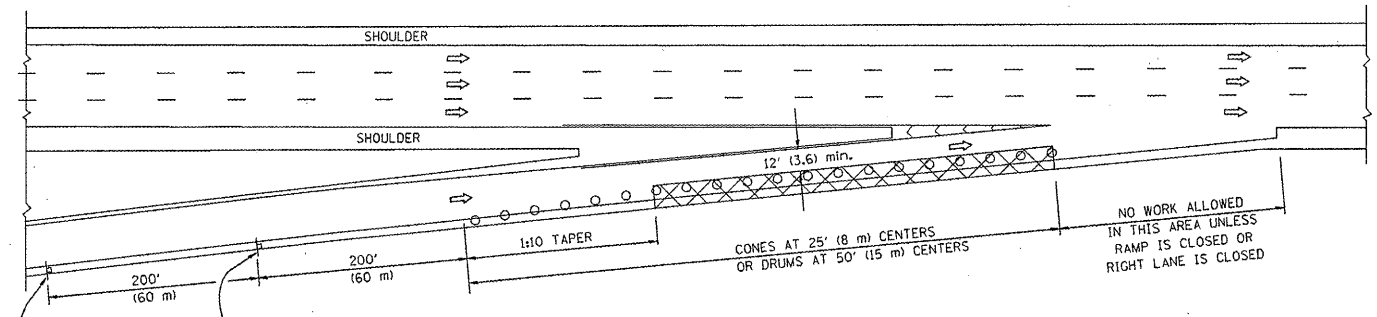
1" Required



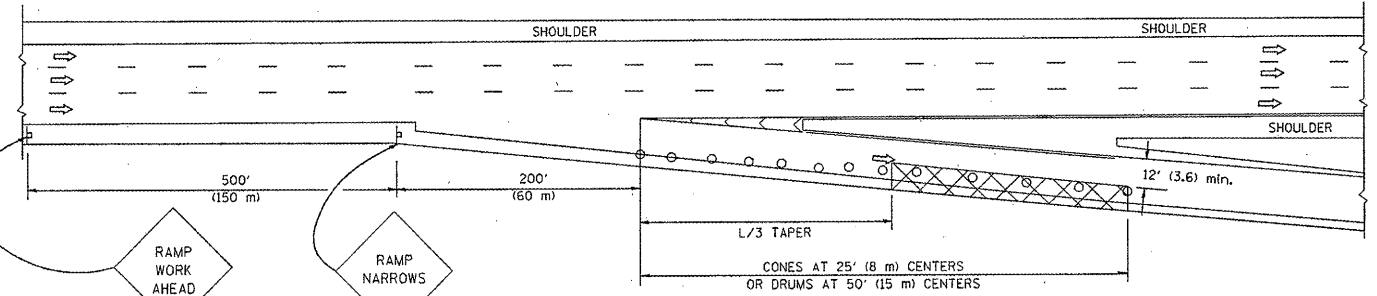
**BOLSTER**

ILLINOIS DEPARTMENT OF  
TRANSPORTATION  
  
EXISTING BRIDGE PLAN  
LOCATION 2: SN 099-0105

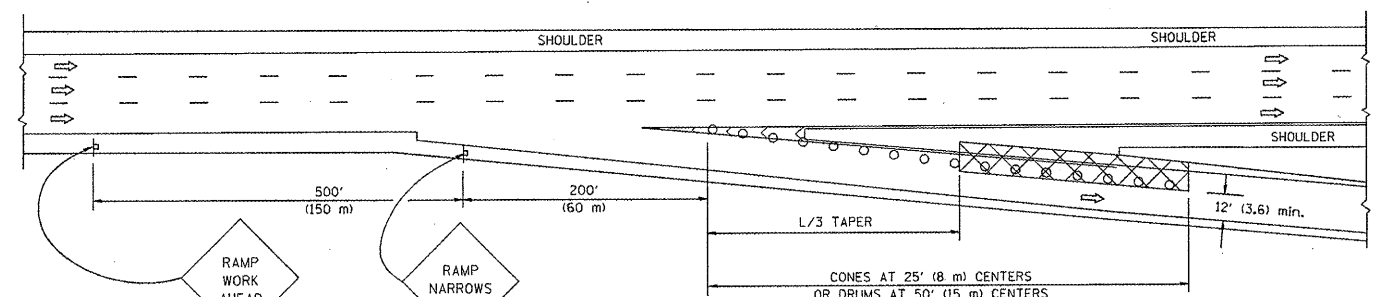
PARTIAL RAMP CLOSURE DETAILS



TYPICAL ENTRANCE RAMP



TYPICAL EXIT RAMP



TYPICAL EXIT RAMP

SYMBOLS

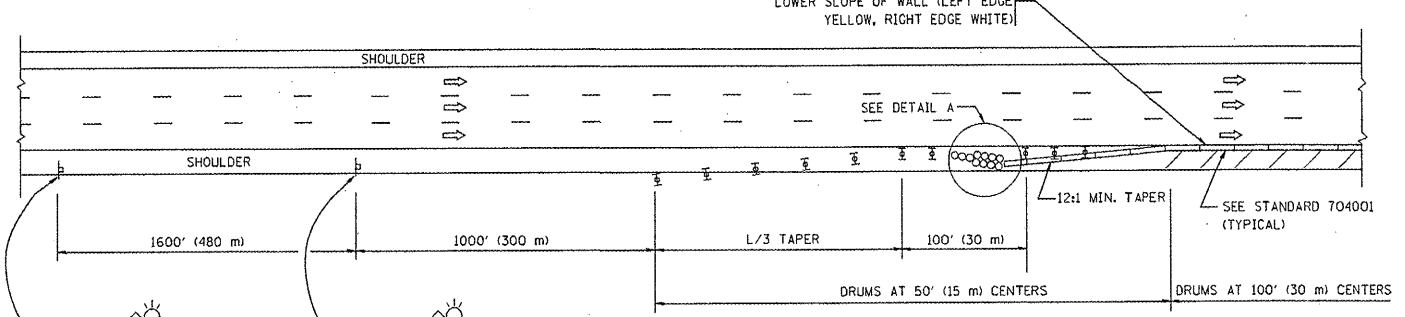
- ACTIVE WORK AREA
- SIGN ON PORTABLE OR PERMANENT SUPPORT
- FLAGGER WITH CONTROL SIGN
- TYPE II BARRICADE, DRUM OR VERTICAL BARRICADE WITH STEADY BURN MONO-DIRECTIONAL LIGHT
- CONE, DRUM OR BARRICADE

GENERAL NOTES

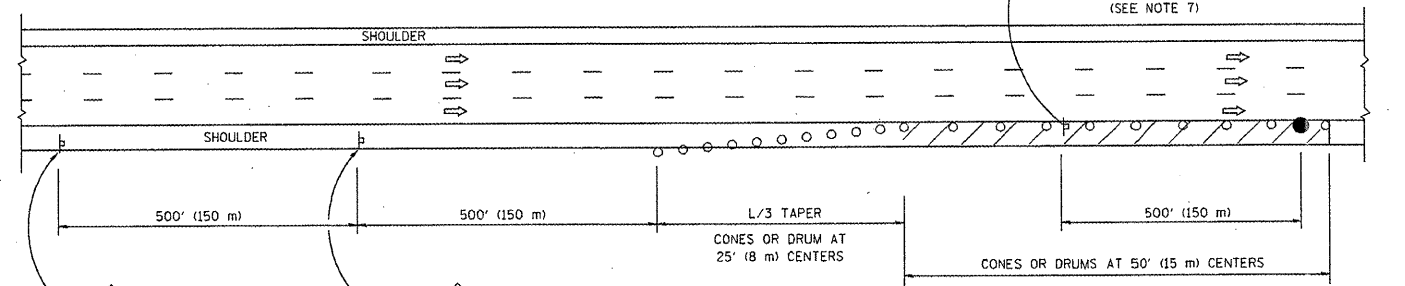
1. THE "L" DISTANCE EQUALS:
 

SPEED LIMIT	FORMULAS
45 mph (80 km/h) OR GREATER:	METRIC ENGLISH $L=0.65(W/S)$ $L=(W/S)$
	W = WIDTH OF OFFSET IN FEET (METERS) S = NORMAL POSTED SPEED MPH (KM/H)
2. PLASTIC DRUMS WITH HIGH PERFORMANCE REFLECTIVE SHEETING AND STEADY BURNING LIGHTS ARE REQUIRED FOR ALL NIGHTTIME CLOSURES.
3. ALL SIGNS SHALL BE POST MOUNTED IF THE CLOSURE TIME EXCEEDS FOUR DAYS.
4. FLASHING LIGHTS SHALL BE USED DURING THE HOURS OF DARKNESS AND SHALL BE INSTALLED ABOVE THE FIRST TWO SETS OF SIGNS.

SHOULDER CLOSURE DETAILS

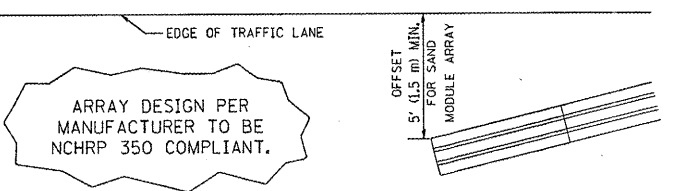


PERMANENT SHOULDER CLOSURE

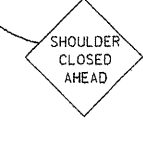
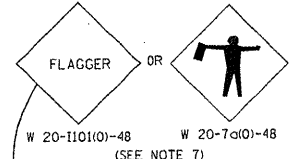
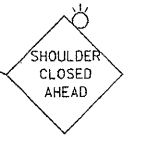
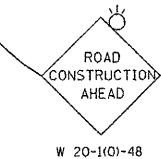


DAYTIME SHOULDER CLOSURE

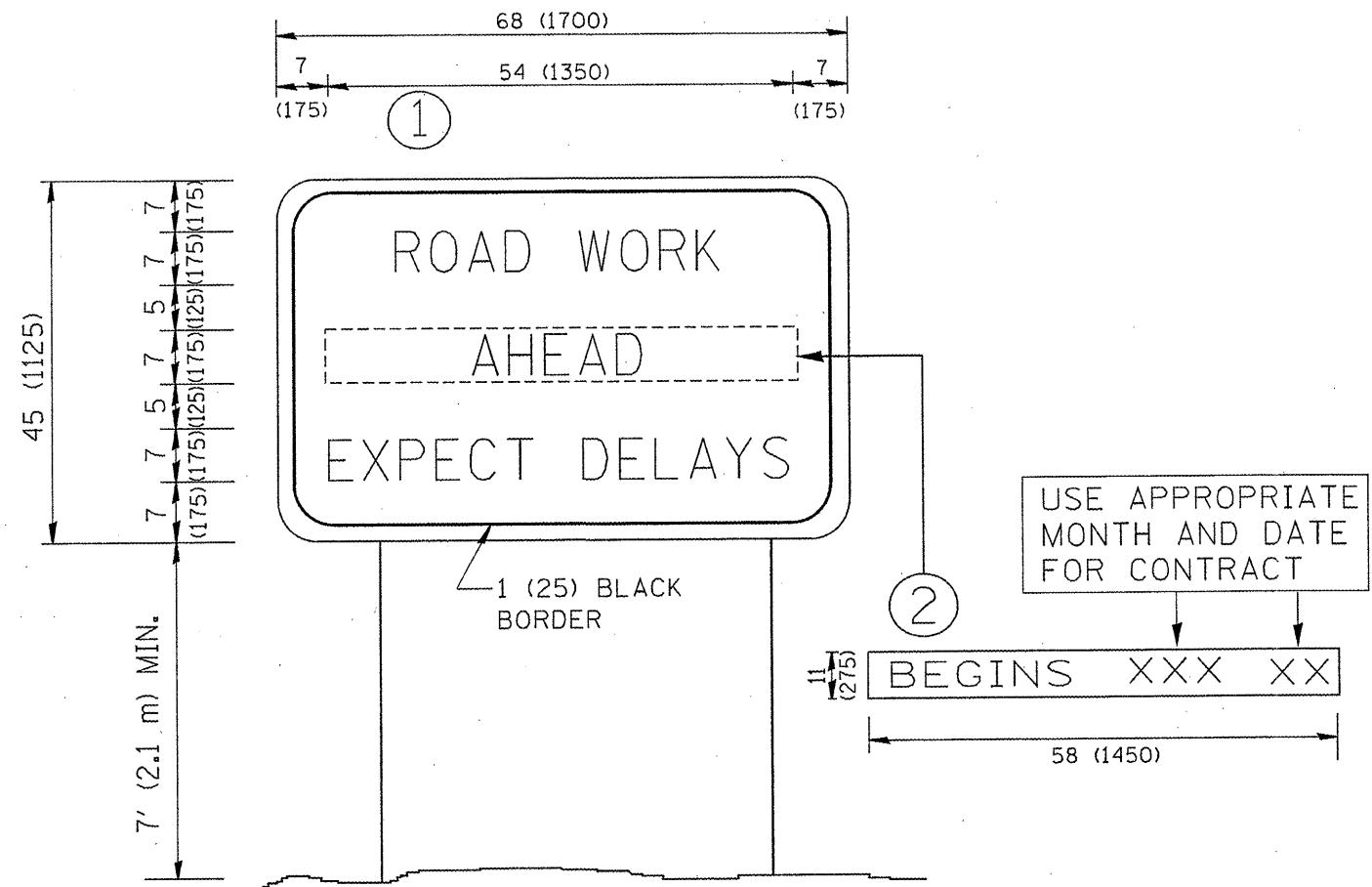
THIS DETAIL IS USED WHERE:  
1. VEHICLES, EQUIPMENT, WORKERS OR THEIR ACTIVITIES ENCR OACH IN AN AREA CLOSER THAN 15' (4.5 m) TO THE EDGE OF PAVEMENT FOR A PERIOD IN EXCESS OF 15 MINUTES.



DETAIL "A"  
IMPACT ATTENUATOR, TEMPORARY  
(SEE NOTE 5)



FILE NAME = W:\d\state\22\34\17.dgn	USER NAME = lsgoo	DESIGNED -	REVISED - 04-03	<b>STATE OF ILLINOIS DEPARTMENT OF TRANSPORTATION</b>	<b>TRAFFIC CONTROL DETAILS FOR FREEWAY SHOULDER CLOSURES AND PARTIAL RAMP CLOSURES</b>	F.A. RTE. VAR	SECTION 2010-055 BP	COUNTY Cook / Will	TOTAL SHEETS 20	SHEET NO. 19
PLOT SCALE = 5/8" = 1' IN.	CHECKED -	DATE - 11-96	REVISED - J.A.F. 12-06	REVISED - S.P.B. 01-07	SCALE: NONE	SHEET NO. 1 OF 1 SHEETS	STA. TO STA.	FED. ROAD DIST. NO. 1 ILLINOIS	FED. AID PROJECT	CONTRACT NO. 60L30



**NOTES:**

1. USE BLACK LETTERING ON ORANGE BACKGROUND.
2. ERECT SIGNS IN ADVANCE OF THE LOCATION FOR THE "ROAD CONSTRUCTION AHEAD" SIGN AT LOCATIONS AS DIRECTED BY THE ENGINEER.
3. ERECT SIGN ① WITH INSTALLED PANEL ② ONE WEEK PRIOR TO THE START OF CONSTRUCTION.
4. REMOVE PANEL ② SOON AFTER THE START OF CONSTRUCTION.
5. SEE SPECIAL PROVISION FOR "TEMPORARY INFORMATION SIGNING" FOR ADDITIONAL INFORMATION.
6. ONE SIGN ASSEMBLY EQUALS 25.70 SQ. FT. (2.3 SQ. M.)
7. SHALL BE PAID FOR AS TEMPORARY INFORMATION SIGNING.

ALL DIMENSIONS ARE IN INCHES (MILLIMETERS) UNLESS OTHERWISE SHOWN.

FILE NAME = W:\diststd\22x34\to22.dgn	USER NAME = geglencbt	DESIGNED -	REVISED - R. MIRS 09-15-97
		DRAWN -	REVISED - R. MIRS 12-11-97
	PLOT SCALE = 50.000' / IN.	CHECKED -	REVISED - T. RAMMACHER 02-02-99
	PLOT DATE = 1/4/2008	DATE -	REVISED - C. JUCIUS 01-31-07

**STATE OF ILLINOIS  
DEPARTMENT OF TRANSPORTATION**

<b>ARTERIAL ROAD INFORMATION SIGN</b>	
SCALE: NONE	SHEET NO. 1 OF 1 SHEETS STA. TO STA.

F.A. RTE.	SECTION	COUNTY	TOTAL SHEETS	SHEET NO.
VAR	2010-055 BP	COOK / WILL	20	20
TC-22			CONTRACT NO. 60130	
FED. ROAD DIST. NO. 1 ILLINOIS FED. AID PROJECT				