

STATE OF ILLINOIS
DEPARTMENT OF TRANSPORTATION
DIVISION OF HIGHWAYS

**PROPOSED
HIGHWAY PLANS**

FAP ROUTE 338: IL ROUTE 59
AT US ROUTE 20
SECTION: 7 HB-K-N
PROJECT: CMF-0338(043)
CHANNELIZATION
COOK COUNTY

C-91-536-10

F.A.P. RTE.	SECTION	COUNTY	TOTAL SHEETS	SHEET NO.
338	7 HB-K-N	COOK	82	1
ILLINOIS			CONTRACT NO. 60K62	

*82 + 8 = 90

D-91-536-10

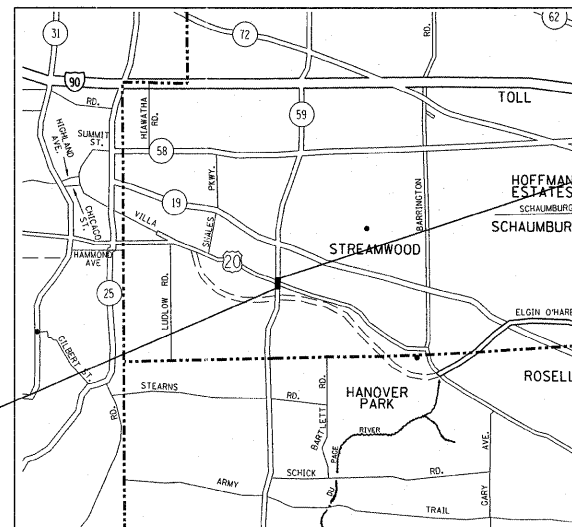


FOR INDEX OF SHEETS, SEE SHEET NO. 2

PROJECT IS LOCATED IN THE VILLAGES
OF STREAMWOOD AND BARTLETT.



R9E

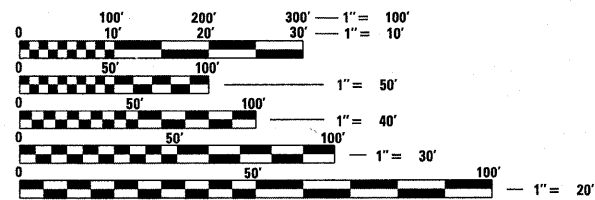


PROJECT BEGINS
STATION 90 + 25

PROJECT ENDS
STATION 111 + 56

HANOVER TOWNSHIP

TRAFFIC DATA
SPEED LIMIT = 45 MPH
2009 ADT = 44,200



FULL SIZE PLANS HAVE BEEN PREPARED USING STANDARD
ENGINEERING SCALES. REDUCED SIZED PLANS WILL NOT
CONFORM TO STANDARD SCALES. IN MAKING MEASUREMENTS
ON REDUCED PLANS, THE ABOVE SCALES MAY BE USED.

J.U.L.I.E.
JOINT UTILITY LOCATION INFORMATION FOR EXCAVATION
1-800-892-0123
OR 811

STATE OF ILLINOIS
DEPARTMENT OF TRANSPORTATION
DIVISION OF HIGHWAYS

SUBMITTED FEBRUARY 18 20 11

Diana M. O'Keefe
DEPUTY DIRECTOR OF HIGHWAYS, REGION ENGINEER

May 13 20 11
Scott E. Stitt, P.E.
ENGINEER OF DESIGN AND ENVIRONMENT

May 13 20 11
Christine M. Reed
DIRECTOR OF HIGHWAYS, CHIEF ENGINEER

PROJECT ENGINEER: DAN WILGREEN (847) 705-4240
PROJECT MANAGER: KEN ENG

GROSS AND NET LENGTH OF PROJECT = 2,131 LF = 0.40 MILES

CONTRACT NO. 60K62

PRINTED BY THE AUTHORITY
OF THE STATE OF ILLINOIS