

STATE OF ILLINOIS  
DEPARTMENT OF TRANSPORTATION  
DIVISION OF HIGHWAYS

PROPOSED  
HIGHWAY PLANS

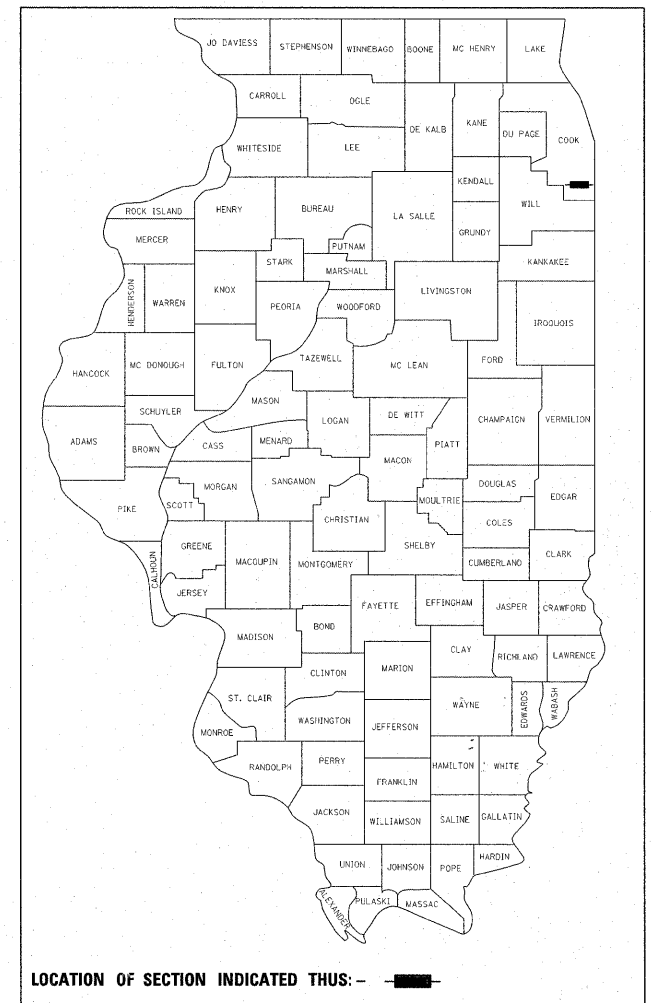
FAP 351: US 6 (159TH STREET)  
I-94 (BISHOP FORD EXPY) TO ILL 83 (TORRENCE AVE.)  
SECTION: 539 W-1-RS  
RESURFACING, BRIDGE DECK OVERLAY & BRIDGE JOINT REPAIR  
PROJECT: NHF-0351(023)  
COOK COUNTY  
C-91-526-10

F.A.P. RTE.	SECTION	COUNTY	TOTAL SHEETS	SHEET NO.
351	539 W-1-RS	COOK	56	1
FED. ROAD DIST. NO.	ILLINOIS	CONTRACT NO.	60K57	

FOR INDEX OF SHEETS, SEE SHEET NO. 2

THE PROJECT IS LOCATED IN THE VILLAGE OF SOUTH HOLLAND AND THE CITY OF CALUMET CITY

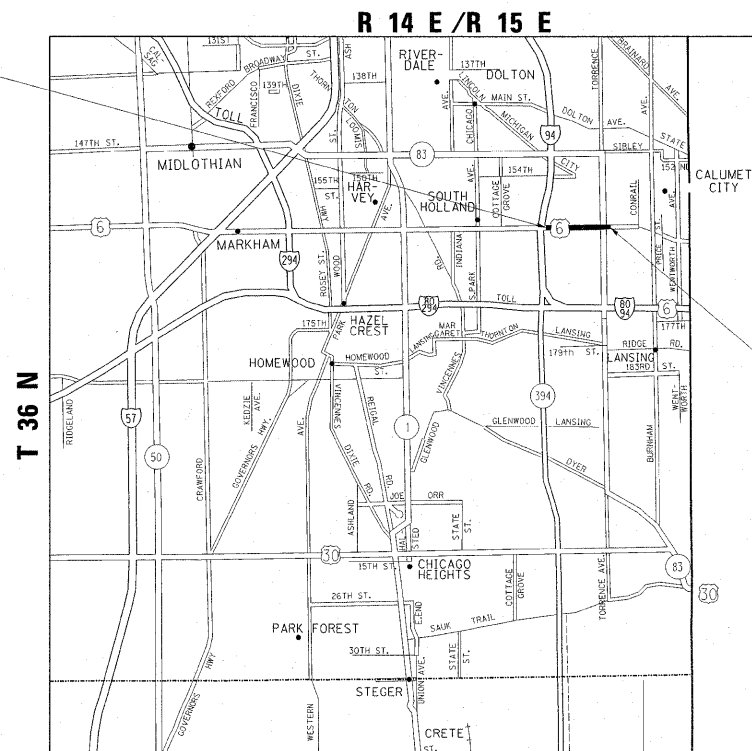
D -91-526-10



LOCATION OF SECTION INDICATED THIS: - [black rectangle] -

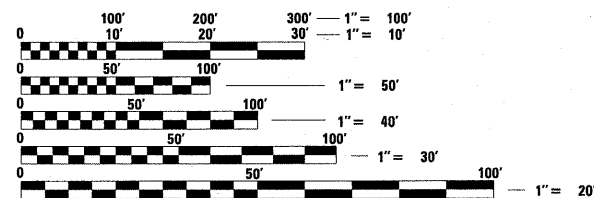
PROJECT BEGINS  
STA. 9+88

RESURFACING OMISSION  
STA. 21+46 TO STA. 23+05  
STA. 43+20 TO STA. 50+38



TRAFFIC DATA  
2009 ADT = 32,100  
POSTED SPEED LIMIT = 35 MPH

PROJECT ENDS  
STA. 74+40



FULL SIZE PLANS HAVE BEEN PREPARED USING STANDARD ENGINEERING SCALES. REDUCED SIZED PLANS WILL NOT CONFORM TO STANDARD SCALES. IN MAKING MEASUREMENTS ON REDUCED PLANS, THE ABOVE SCALES MAY BE USED.

J.U.L.I.E.  
JOINT UTILITY LOCATION INFORMATION FOR EXCAVATION  
1-800-892-0123  
OR 811

PROJECT ENGINEER KARI SMITH (847) 705-4437  
PROJECT MANAGER KEN ENG (847) 705-4247

CONTRACT NO. 60K57

GROSS LENGTH OF PROJECT = 6,452 LINEAL FEET = 1.22 MILE  
NET LENGTH OF PROJECT = 5,575 LINEAL FEET = 1.06 MILE

STATE OF ILLINOIS  
DEPARTMENT OF TRANSPORTATION  
DIVISION OF HIGHWAYS

SUBMITTED APRIL 12 20 11

*Diana M. O'Keefe*  
DEPUTY DIRECTOR OF HIGHWAYS, REGION ENGINEER

May 13 20 11  
*Scott E. Still, P.E.*  
Acting ENGINEER OF DESIGN AND ENVIRONMENT

May 13 20 11  
*Christine M. Reed*  
DIRECTOR OF HIGHWAYS, CHIEF ENGINEER

PRINTED BY THE AUTHORITY  
OF THE STATE OF ILLINOIS