

STATE OF ILLINOIS  
DEPARTMENT OF TRANSPORTATION

F.A. RTE.	SECTION	COUNTY	TOTAL SHEETS	SHEET NO.
	D 1 REFLECTOR REPL 24-07	N. COOK	4	1
		ILLINOIS	CONTRACT NO. 46625	

INDEX OF SHEETS

1. COVER SHEET
2. GENERAL NOTES
3. SUMMARY OF QUANTITIES
4. RAISED REFLECTIVE PAVEMENT MARKER REPLACEMENT LOCATIONS

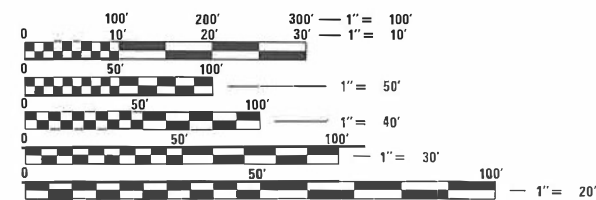
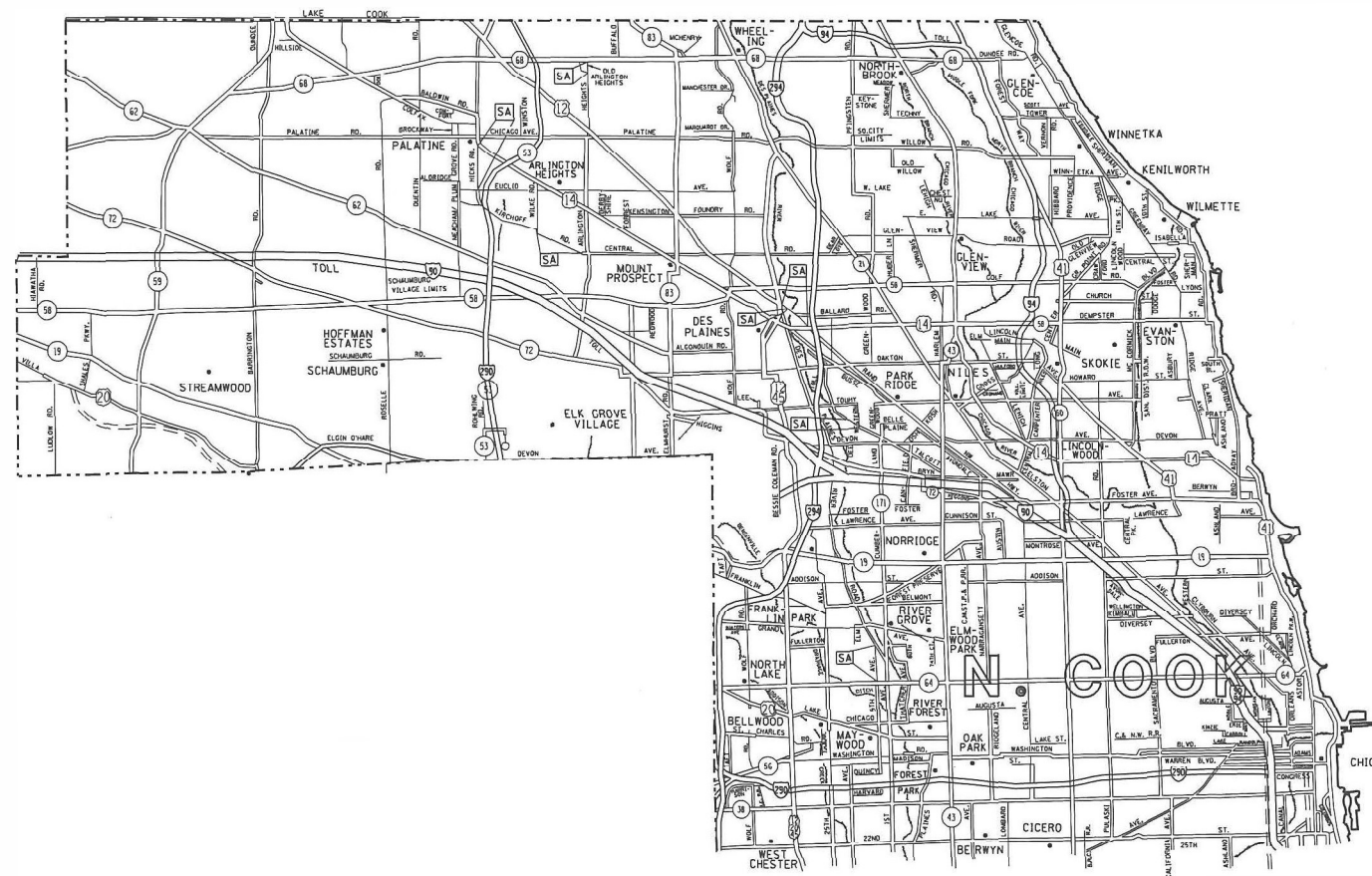
STATE STANDARDS

- 701301-04 LANE CLOSURE 2L,2W, SHORT TIME OPERATIONS
- 701311-03 LANE CLOSURE 2L,2W MOVING OPERATIONS-DAY ONLY
- 701426-09 LANE CLOSURE, MULTILANE, INTERMITTENT OR MOVING OPERATION FOR SPEEDS  $\geq$  45MPH
- 701427-05 LANE CLOSURE, MULTILANE, INTERMITTENT OR MOVING OPERATION FOR SPEEDS  $\leq$  40MPH
- 701901-08 TRAFFIC CONTROL DEVICES

# PROPOSED HIGHWAY PLANS

VARIOUS ROUTES  
D 1 REFLECTOR REPL 24-07 N COOK  
RAISED REFLECTOR REPLACEMENT  
NORTH COOK COUNTY

M-60-007-24



FULL SIZE PLANS HAVE BEEN PREPARED USING STANDARD ENGINEERING SCALES. REDUCED SIZED PLANS WILL NOT CONFORM TO STANDARD SCALES. IN MAKING MEASUREMENTS ON REDUCED PLANS, THE ABOVE SCALES MAY BE USED.

J.U.L.I.E.  
JOINT UTILITY LOCATION INFORMATION FOR EXCAVATORS  
1-800-892-0123  
OR 811

STATE OF ILLINOIS  
DEPARTMENT OF TRANSPORTATION

SUBMITTED MARCH 15, 2023  
Jose Rios REGIONAL ENGINEER  
May 12, 2023  
SEA. EKS ENGINEER OF DESIGN AND ENVIRONMENT  
May 12, 2023  
Steph M. Smith DIRECTOR OF HIGHWAYS PROJECT IMPLEMENTATION

PRINTED BY THE AUTHORITY  
OF THE STATE OF ILLINOIS

## GENERAL NOTES

The Department may remove and not install markers in certain locations at the engineer's discretion.

The Department may install markers in certain locations that did previously have markers at the engineer's discretion.

The locations of the repair areas shall be determined by the engineer.

No material should be left on or near the roadway.

Removal of damaged materials will include loading, hauling and disposal.

MODEL: Default  
 FILE NAME: S:\S:\Contract\CD\CoverSheets for Contract.dgn

	USER NAME = David.Gonzalez2	DESIGNED -	REVISED -	<b>STATE OF ILLINOIS DEPARTMENT OF TRANSPORTATION</b>	<b>GENERAL NOTES</b>	F.A. RTE.	SECTION	COUNTY	TOTAL SHEETS	SHEET NO.
	PLOT SCALE = 102.7635 ' / in.	DRAWN -	REVISED -				D1 REFLECTOR REPL 24-07	N. COOK	4	2
	PLOT DATE = 3/14/2023	CHECKED -	REVISED -		SCALE: SHEET 2 OF 4 SHEETS STA. TO STA.				CONTRACT NO. 46625	
		DATE -	REVISED -				ILLINOIS	FED. AID PROJECT		

CODE NO.	ITEM	UNIT	100% STATE URBAN 0021 QUANTITY
78100100	RAISED REFLECTIVE PAVEMENT MARKER	EACH	10,464
78100300	REPLACEMENT REFLECTOR	EACH	34,881
78300200	RAISED REFLECTIVE PAVEMENT MARKER REMOVAL	EACH	10,464

MODEL: Default  
FILE NAME: S:\Contracts\CD\CoverSheets for Contracts.dgn

USER NAME = David.Gonzalez2	DESIGNED -	REVISED -
	DRAWN -	REVISED -
PLOT SCALE = 102.7635 ' / in.	CHECKED -	REVISED -
PLOT DATE = 3/14/2023	DATE -	REVISED -

**STATE OF ILLINOIS  
DEPARTMENT OF TRANSPORTATION**

**SUMMARY OF QUANTITIES**

SCALE: SHEET 3 OF 4 SHEETS STA. TO STA.

F.A. RTE.	SECTION	COUNTY	TOTAL SHEETS	SHEET NO.
	D1 REFLECTOR REPL 24-07	N. COOK	4	3
ILLINOIS FED. AID PROJECT			CONTRACT NO. 46625	

## District 1 Raised Reflective Pavement Markers Replacement List

Route	From (West/South Limit)	To (East/North Limit)	Total	Y/Y	Y/O	W/O
IL 64	DuPage/Cook Co. Line	IL 43	3,573	229	172	3,172
US 45/ Des Plaines River	US 12	IL 21	1,678	642	393	1,144
US 12/45	US 20	IL 19	3,093	321	446	2,326
Ballard Rd	Greenwood Rd	IL 21	117	84	15	18
Des Plaines River	IL-171	n/o Foster Ave	1,979	678	223	1,078
Golf Rd	IL 43	McCormick Rd	2,269	828	103	1,338
Old Higgins Rd	Elmhurst Rd	Dead End @ RR	185	121	0	64
5th Ave	A/A seam S/O Lake St	IL 64	576	366	34	176
25th Ave	Belmont	Addison	306	225	75	6
25th Ave	Grand	St Charles Rd	1,029	371	91	567
Belmont Rd	IL 171	25th Ave	3,190	848	282	2,060
Belmont Rd	Oriole Ave/76th Ave	IL 171	385	237	11	137
Devon	Des Plaines River Rd	I-94	7,129	2,024	1,005	4,100
Elmhurst Rd	Devon	A/C s/o IL 72	1,102	154	299	649
Fullerton Ave	1st Ave/	80th Ave	127	122	0	5
Forest Preserve	IL 43	Montrose Rd	418	122	84	212
Grand Ave	I-294	US 12/45	3,323	998	200	2,125
Gunnison Rd	IL 43	Narragansett	481	241	2	238
Meacham Rd/ Plum Grove Rd	IL 62	Emerson	625	219	157	249
Narragansett Ave/ Nagle Ave	Montrose Rd	Gunnison Rd	106	102	0	4
Talcott	I-294	Dee Rd	871	361	263	247
Touhy	IL 72	Ozanam Ave	1,818	648	190	980
<b>SUBTOTALS:</b>			<b>34,881</b>	<b>9,941</b>	<b>4,045</b>	<b>20,895</b>
<b>GRAND TOTALS:</b>			<b>34,881</b>	<b>EACH</b>		

MODEL: Default  
FILE NAME: S:\S\Contract\CD\CoverSheets for Contract\cdp

USER NAME = David.Gonzalez2	DESIGNED -	REVISED -	<b>STATE OF ILLINOIS DEPARTMENT OF TRANSPORTATION</b>	<b>RAISED REFLECTIVE PAVEMENT MARKER REPLACEMENT LOCATIONS</b>	F.A. RTE.	SECTION	COUNTY	TOTAL SHEETS	SHEET NO.
PLOT SCALE = 102,7635' / in.	CHECKED -	REVISED -			D1 REFLECTOR REPL 24-07	N. COOK	4	4	
PLOT DATE = 3/14/2023	DATE -	REVISED -			CONTRACT NO. 46625		ILLINOIS FED. AID PROJECT		
					SCALE:	SHEET 4 OF 4 SHEETS	STA.	TO STA.	